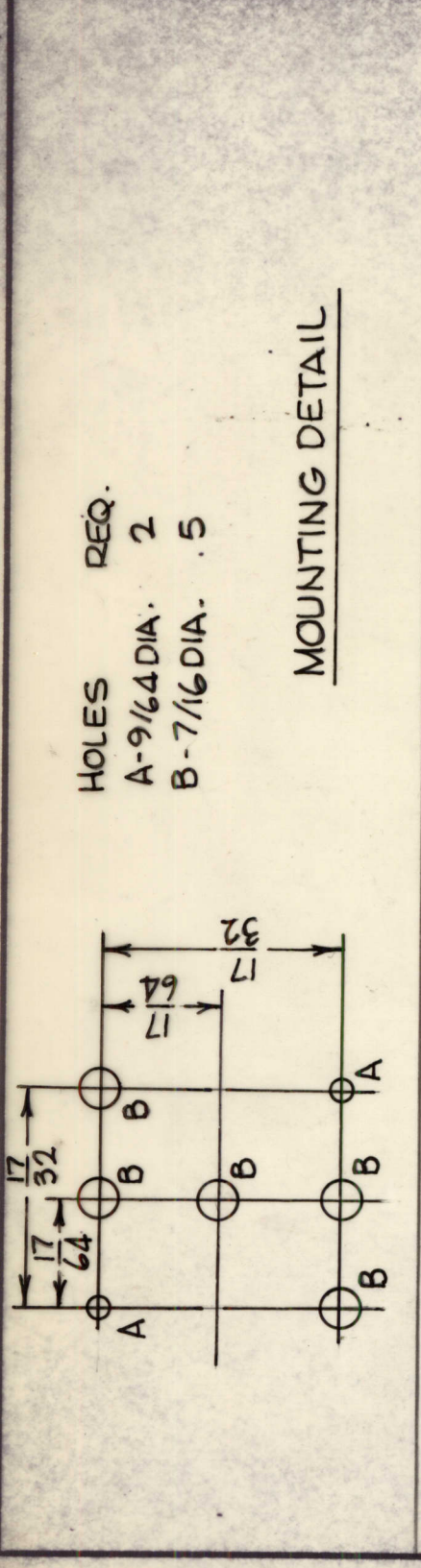


SYMBOL	DESCRIPTION	DATE	E.M.N. NO.	DRAFT	CHKD	APPD
TF 332	ORIGINAL RELEASE FOR PRODUCTION	8/7/69	φ	ω		



REVISIONS.

1. TRANSFORMER, L.V. INVERTER
 2. COIL DATA:
 PRIMARY WINDING: SEE PICTORIAL
 SECONDARY WINDING: SEE PICTORIAL

ELECTRICAL SPECIFICATIONS

1. CASE DATA:
 A - HERMETICALLY SEALED
 B - RECTANGULAR STEEL CASE, MIL TYPE
 C - BODY DIMENSIONS: 1" WIDE
 1" LONG
 1 3/8 HIGH

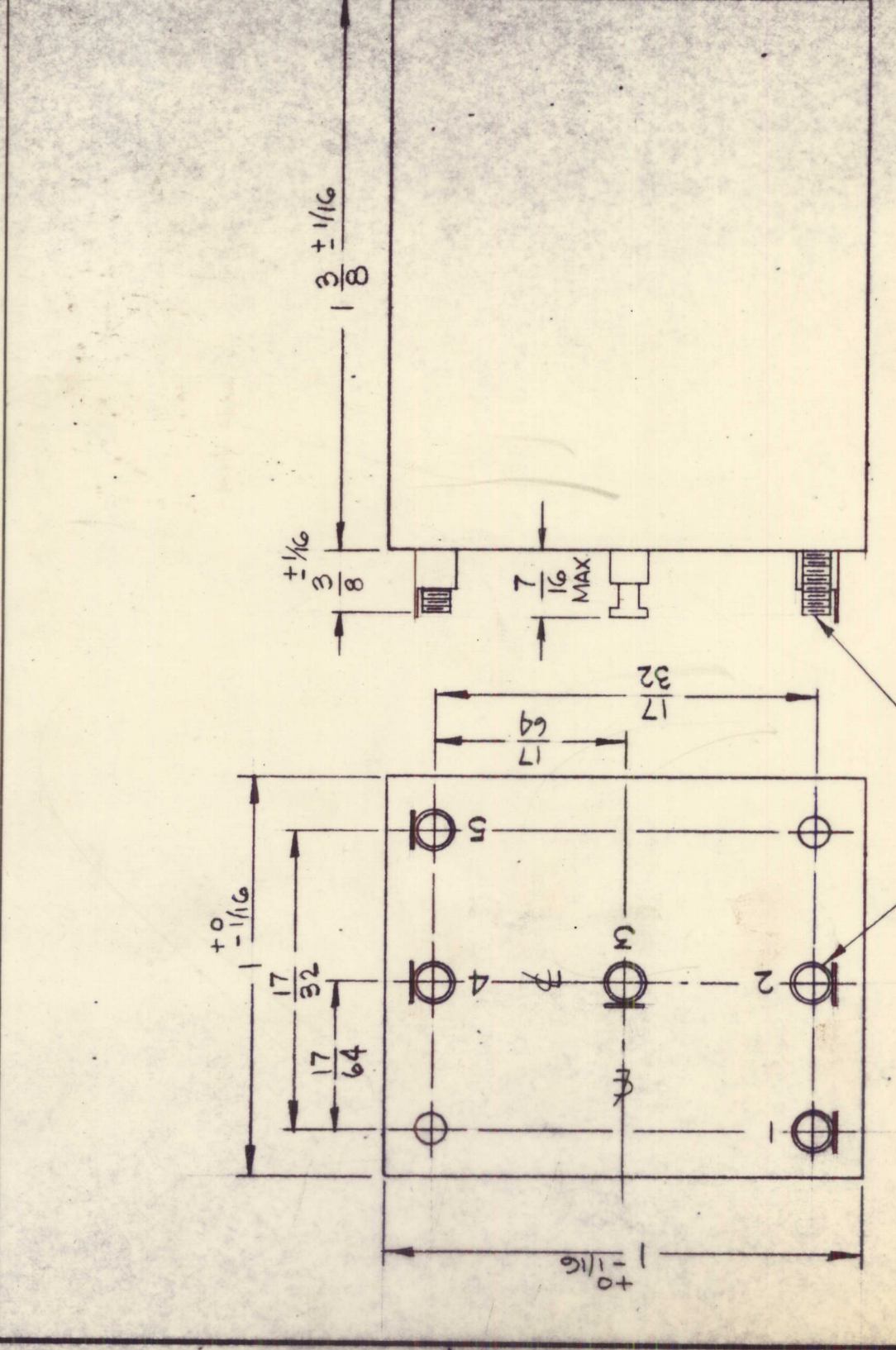
2. MOUNTING DATA:
 A - MTG. METHOD: STUD
 B - MTG. DIMENSIONS: (2) 4.40 STUDS ON 17/32 CTRS. - 3/8 HIGH

3. TERMINAL DATA: A - (5) TERMINALS
 B - LUNDEY-199-E

4. FINISH: SMOOTH GRAY ENAMEL (TMC SPEC. S115) EXCEPT TERMINAL END

5. MARKING: METAL STAMP TERMINALS 1 THRU 5 AS SHOWN. MARK TOP AS SHOWN PER TMC SPEC. 5727

TEST VOLTAGE: 300 V



REQ'D.	ITEM	PART NUMBER	DESCRIPTION	SYMBOL
	POSE		LIST OF MATERIAL	
	MATERIAL		THE TECHNICAL MATERIEL CORP. MAMARONECK, NEW YORK	
	FINISH		TRANSFORMER, L.V. INVERTER	

Q'TY./UNIT	SCALE	MODEL USED ON	CODE	ABBY. NO.
1	1:1	TPSG-1	C	S401-30(7020)

UNLESS OTHERWISE SPECIFIED DIMENSIONS ARE IN INCHES AND INCLUDE CHEMICALLY APPLIED OR PLATED FINISHES

TOLERANCES
 DECIMALS ± 0.05
 FRACTIONS ± 1/64 ANGLES ± 0° 30'

THE CONTENTS OF THIS DRAWING ARE THE EXCLUSIVE PROPERTY OF THE TECHNICAL MATERIEL CORP. ITS UNAUTHORIZED USE OR REPRODUCTION IN WHOLE OR IN PART IS STRICTLY FORBIDDEN.

DATE: 12-21-65
 DRAWN: H. AUSTIN
 CHECKED: [Signature]
 DATE: 1-6-66
 ELECT. DES. [Signature]
 MECH. DES. [Signature]
 SHEET: TF 332
 DATE: 8/7/69
 REV. LTR. 0

M/L Allen 1/6/66