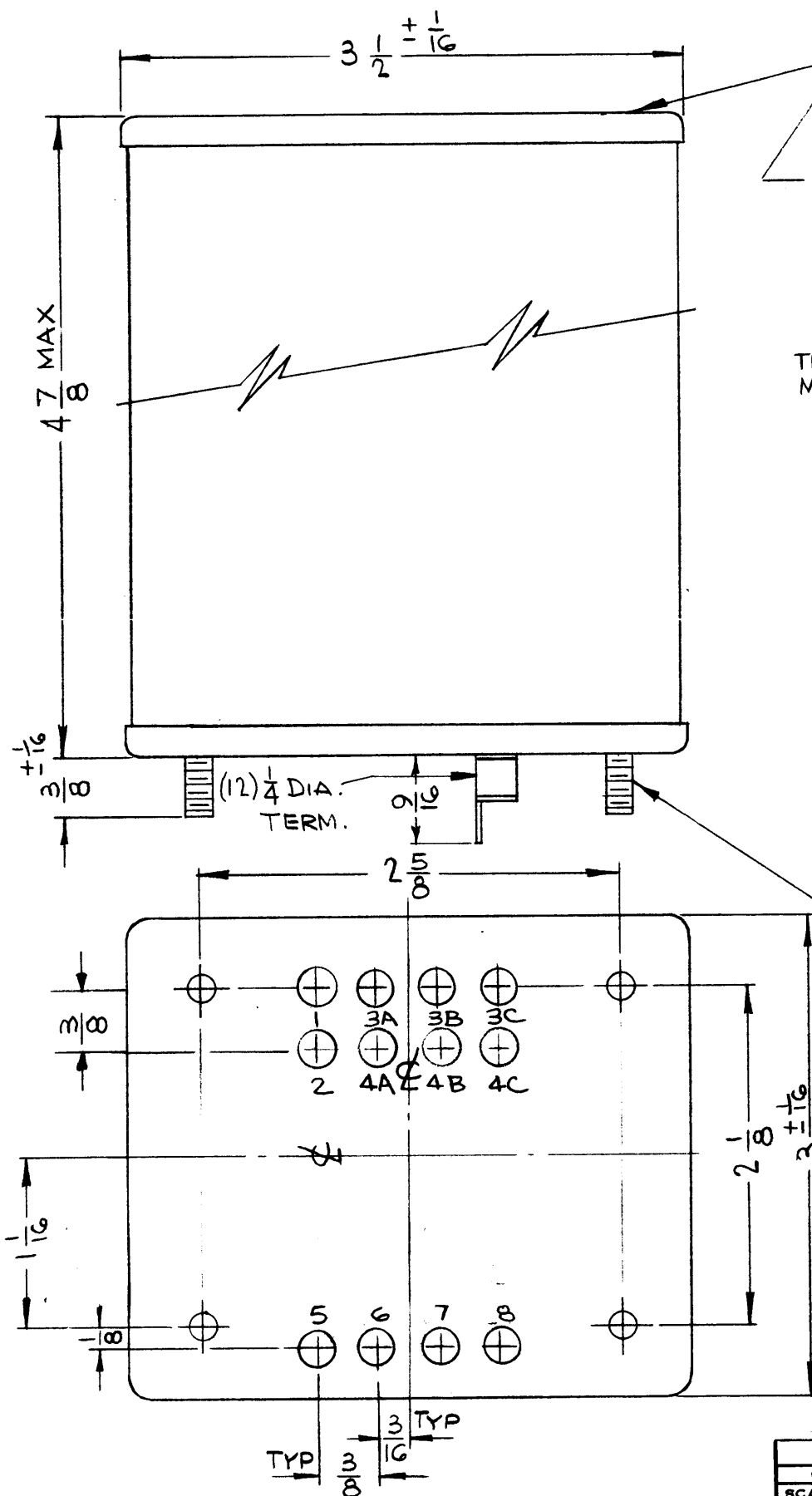
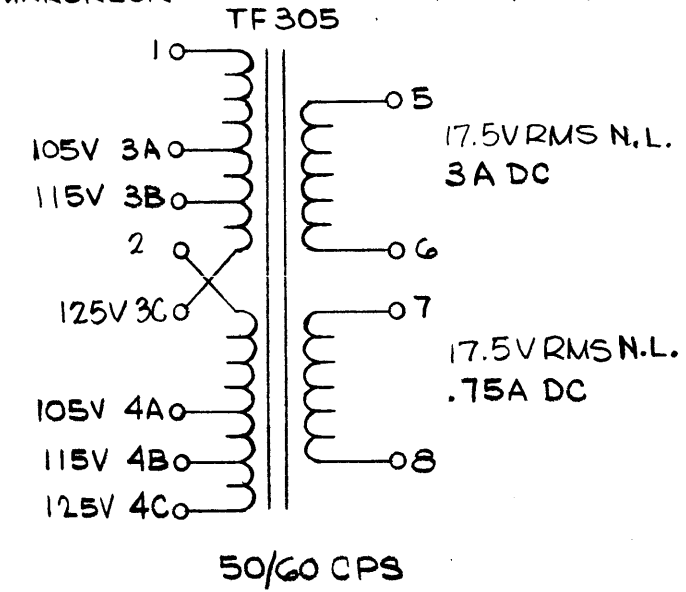


STANDARD DRAWING



TO BE PLACED ON TOP OF TRANSFORMER

THE TECHNICAL MATERIEL CORPORATION
MAMARONECK NEW YORK



8-32 STUD
4 REQ.

TF 305 B

REVISIONS						
SYM	DESCRIPTION	DATE	E.M.N. NO.	DRAFT	CHKD	APPD
X	EXPERIMENTAL RELEASE	3-1-65		HLA	J.M.	
Ø	ORIGINAL RELEASE FOR PRODUCTION	3-11-65			J.M.	
A	4-7/8 MAX. WAS 4-3/8 ± 1/8; "N.L." ADD. TO 17.5VRMS (2PL.) "NO LOAD" ADD. TO SECONDARY WINDINGS OF CASE DATA.	4-19-65	13839	SL	JCB	
B	TERM CONFIG & STAMPING TURNED 180°	6-17-65	14279	SL	JCB	JC

CASE DATA:

- A. HERMETICALLY SEALED
- B. FULLY ENCLOSED
- C. GREY
- D. STEEL, HOT TIN DIPPED

PRIMARY WINDINGS

- A. 105, 115, 125V
- B. 50/60 CPS
- C. SINGLE PHASE

SECONDARY WINDINGS (NO LOAD)

- A. 17.5VRMS, 17.5VRMS
- B. 3A, DC; .75ADC

TERMINAL DATA

- A. QUANTITY 12
- B. SOLDER LUG

MARKING: SCHEMATIC TO BE STAMPED IN BLACK, LETTERING GOTHIC, AS PER TMC SPEC. S727 LOCATED AS SHOWN.

REQ'D.	ITEM	PART NUMBER	DESCRIPTION	SYMBOL
LIST OF MATERIAL				
MATERIAL		SEE SPEC.	THE TECHNICAL MATERIEL CORP. MAMARONECK, NEW YORK	
FINISH		SEE SPEC.	TITLE TRANSFORMER,	
UNLESS OTHERWISE SPECIFIED DIMENSIONS ARE IN INCHES AND INCLUDE CHEMICALLY APPLIED OR PLATED FINISHES		DRAWN H. AUSTIN	DATE 3-1-65	FINAL APPROVAL <i>[Signature]</i>
		CHECKED <i>[Signature]</i>	DATE 3-11-65	DATE 3/23/65
		ELECT. DES. <i>[Signature]</i>	DATE 3-23-65	TF 305
		MECH. DES.	DATE	
		DECIMALS .X ± .05 .XX ± .01 .XXX ± .005	FRACTIONS ± 1/64 ANGLES ± 0° 30'	SHEET
		TOLERANCES		REV. LTR.

ARCA-1	
Q'TY./UNIT	ASS'Y. NO.
SCALE	MODEL USED ON
	C S401-30 (6465)

THE CONTENTS OF THIS DRAWING ARE THE EXCLUSIVE PROPERTY OF THE TECHNICAL MATERIEL CORP. ITS UNAUTHORIZED USE OR REPRODUCTION IN WHOLE OR IN PART IS STRICTLY FORBIDDEN.

NOTES