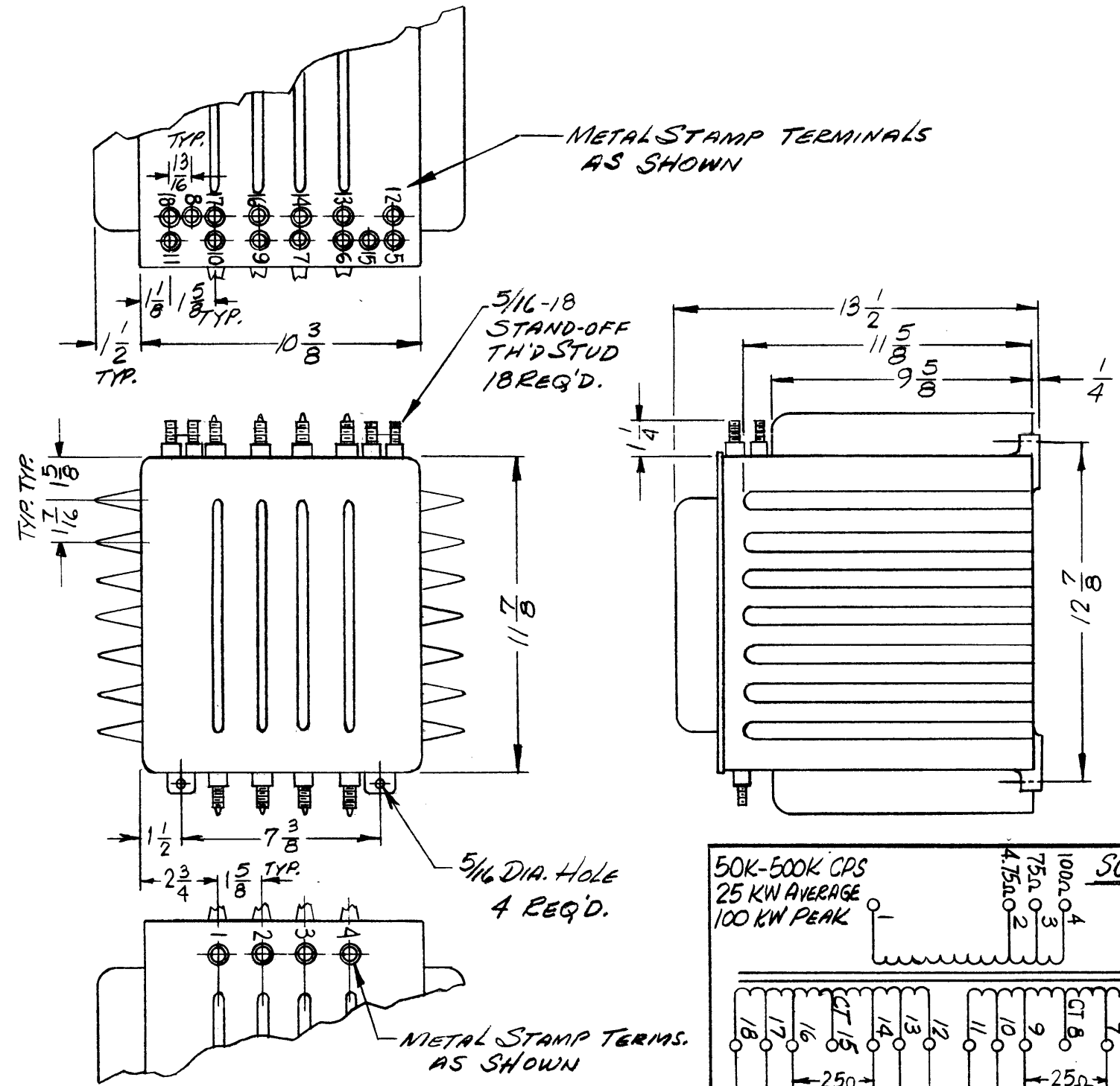


TF300

REVISIONS

SYM	DESCRIPTION	DATE	E.M.N. NO.	DRAFT	CHKD	APPD
Ø	ORIGINAL RELEASE FOR PRODUCTION	1-9-67	4	WTD		



— ELECTRICAL SPECIFICATIONS —

TRANSFORMER, RF MATCHING
COIL DATA:

PRIMARY WINDING: 47.5Ω, 75Ω, 100Ω, AT 50K/50K CPS, 25KW AVERAGE, 100 KW PEAK
SECONDARY WINDINGS: TO BE CONNECTED IN PARALLEL FOR 25, 40 OR 50Ω LOAD. FOR 100 Ω, OUTPUT, USE 7&16 AND CONNECT 9 TO 14 IN SERIES

— MECHANICAL SPECIFICATIONS —

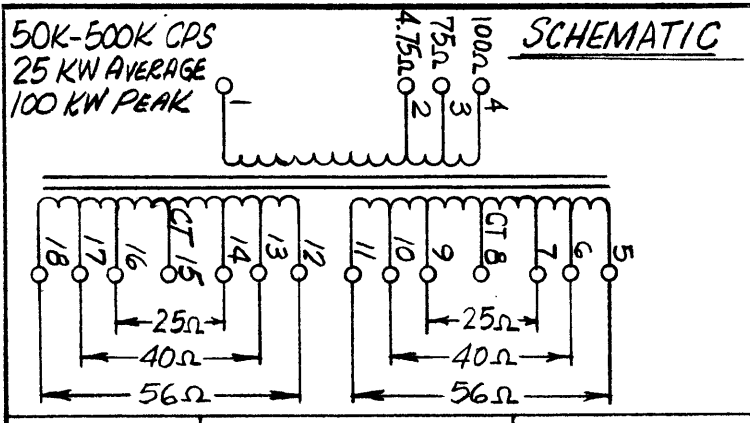
CASE DATA: HERMETICALLY SEALED
CAST ALUMINUM
BODY DIMENSIONS (SEE PICTORIAL)
OIL FILLED

MOUNTING DATA: MOUNTING METHOD (4) 5/16 DIA HOLES
MOUNTING DIMENSIONS (SEE PICTORIAL)

TERMINAL DATA: (18) TERMINALS
STAND-OFF THREADED STUD 5/16-18 x 1-1/4 HIGH
(NOTE: TERM. HARDWARE TO BE SUPPLIED BY MFG)

FINISH: BLACK PAINT

MARKING: METAL STAMP TERMINALS 1 THRU 18 AS SHOWN



Q'TY./UNIT	MODEL USED ON	ASS'Y. NO.
SCALE	CODE	S401-30(6392)

THE CONTENTS OF THIS DRAWING ARE THE EXCLUSIVE PROPERTY OF THE TECHNICAL MATERIEL CORP. ITS UNAUTHORIZED USE OR REPRODUCTION IN WHOLE OR IN PART IS STRICTLY FORBIDDEN.

REQ'D.	ITEM	PART NUMBER	DESCRIPTION	SYMBOL
--------	------	-------------	-------------	--------

LIST OF MATERIAL				
MATERIAL		THE TECHNICAL MATERIEL CORP. MAMARONECK, NEW YORK		
FINISH		TITLE		
UNLESS OTHERWISE SPECIFIED DIMENSIONS ARE IN INCHES AND INCLUDE CHEMICALLY APPLIED OR PLATED FINISHES		TRANSFORMER, RF MATCHING		
DECIMALS	TOLERANCES	FRACTIONS	DATE	DATE
.X ± .05		± 1/64	3-30-66	1/9/67
.XX ± .01		ANGLES	12/6/66	
.XXX ± .005		± 0° 30'		
DRAWN H. Austin		FINAL APPROVAL		DATE
CHECKED		DATE		
ELECT. DES.		DATE		
MECH. DES.		DATE		
SHEET			REV. LTR.	

NOTES