

WIRING SCHEMATIC  
DETAIL

ELECTRICAL SPECIFICATIONS

PRIMARY - ADJ. 195-240/390-480 VAC  
 SECONDARY VOLTS - 9000V RMS  
 SECONDARY CURRENT - 7 AMPS DC  
 WORKING VOLTAGE - 20KV  
 TEST VOLTAGE - 30KV

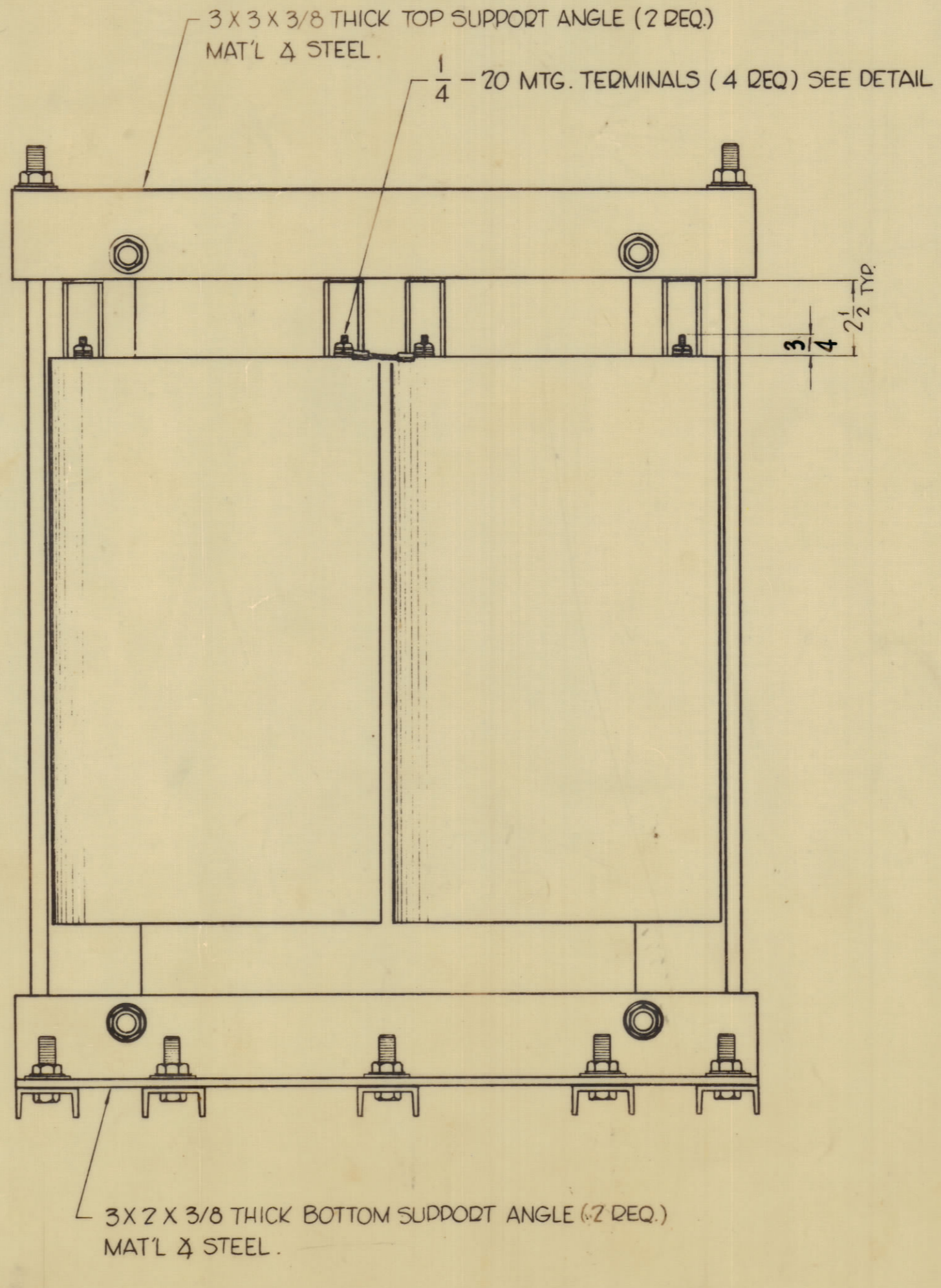
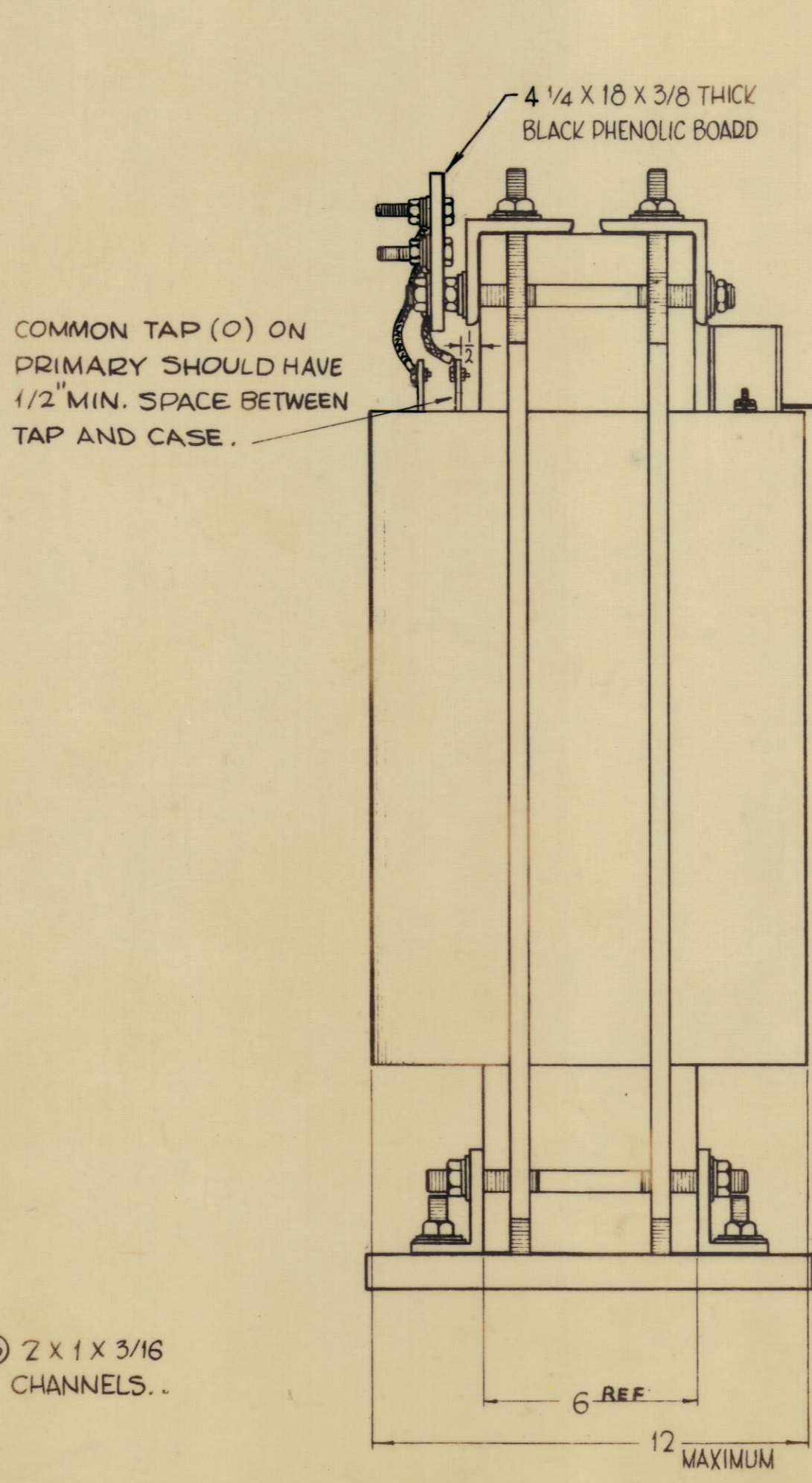
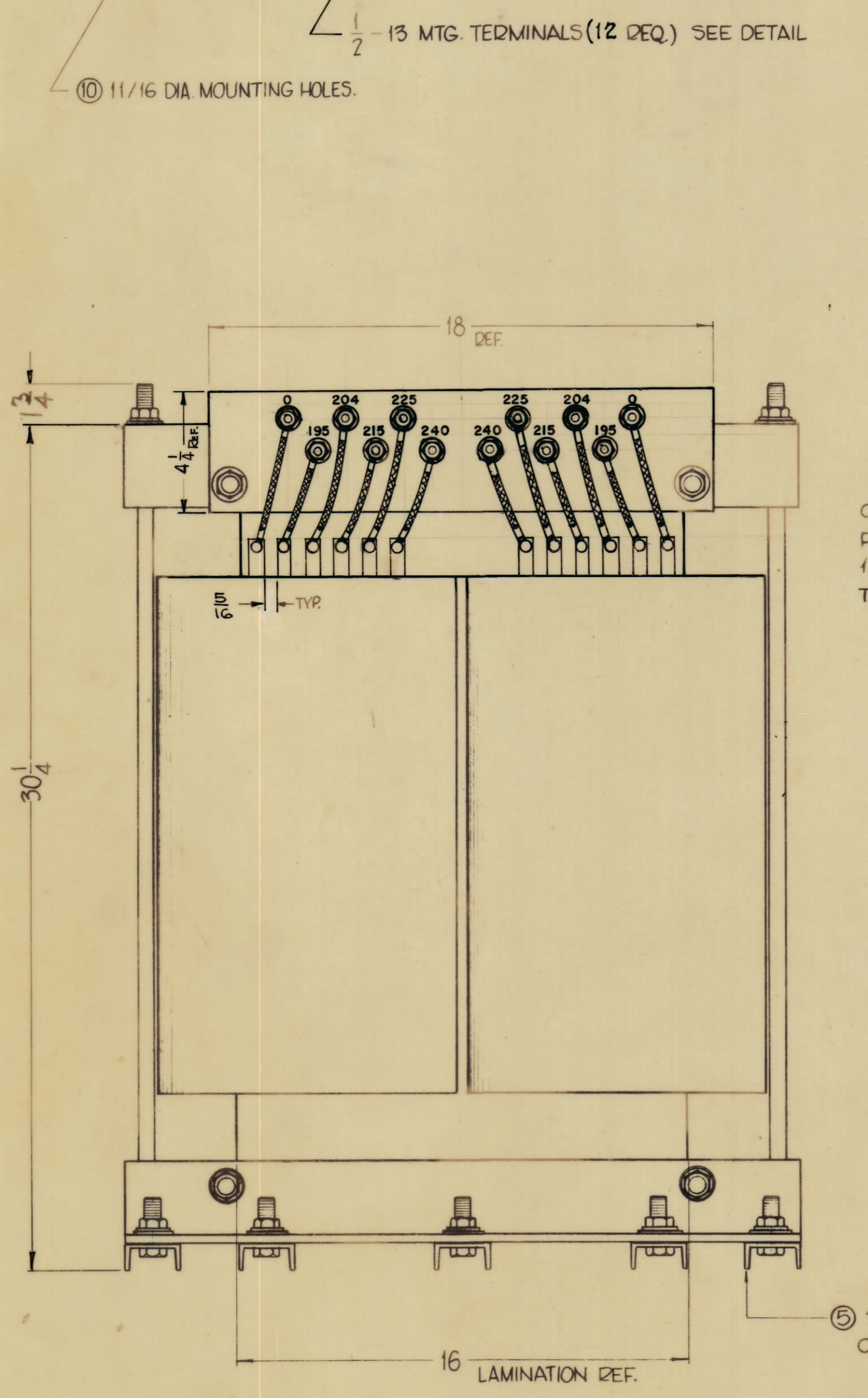
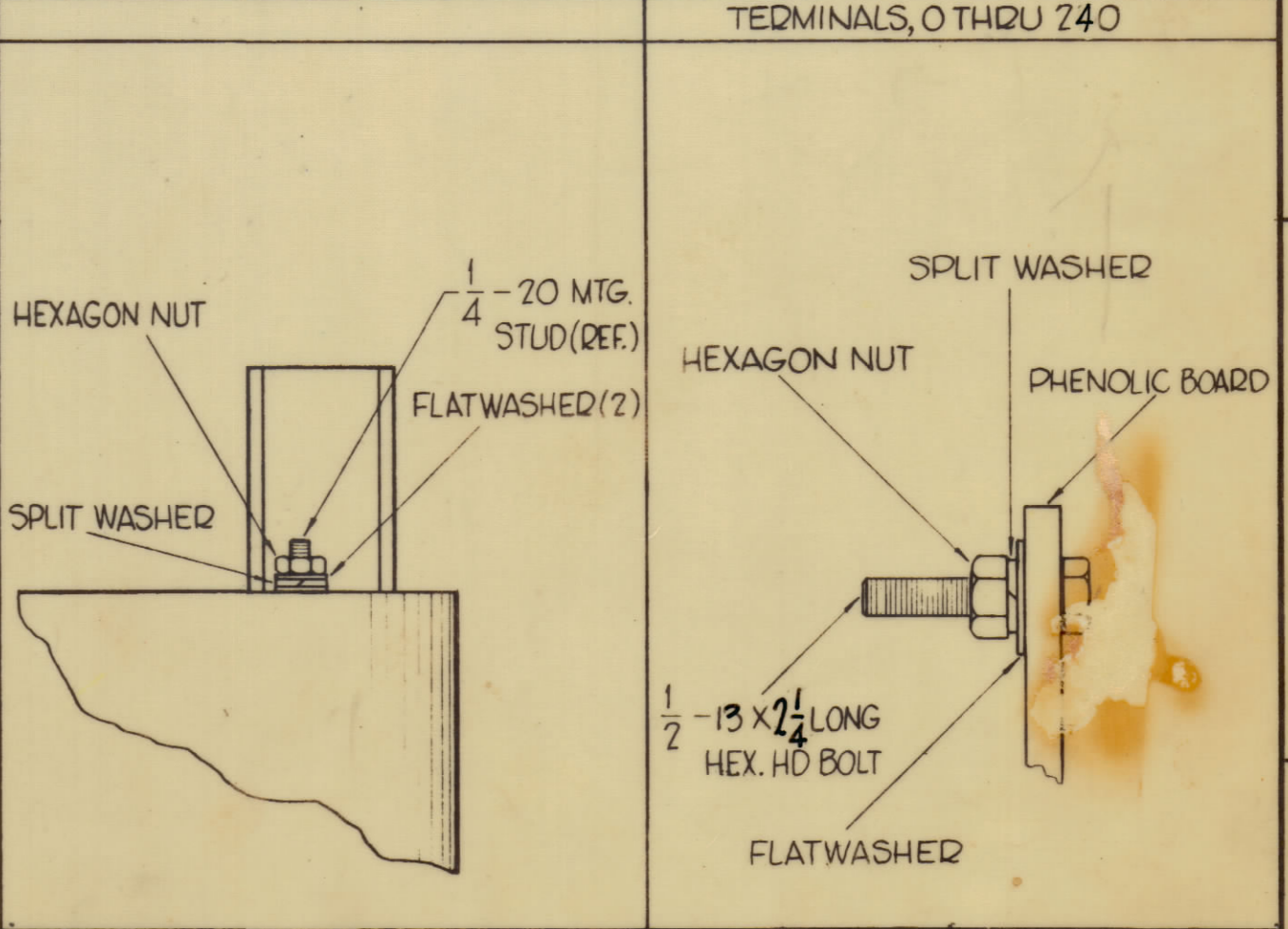
MECHANICAL SPECIFICATIONS

TYPE - OPEN FRAME, WITH CHANNELS AND ANGLES AS SHOWN  
 FINISH - BLACK, EXCEPT PHENOLIC BOARD AND TERMINALS.  
 SIZE O/A - 12 1/2 X 24 1/2 X 30 1/4 HIGH, EXCLUSIVE OF TERMINALS.  
 STAMPING - TERMINALS, 0 THRU 240, SCHEMATIC AND LETTERING TO BE STAMPED IN WHITE AS SHOWN, AS PER TMC SPECIFICATION 5727.

NOTE - TRANSFORMER TO BE MANUFACTURED IN ACCORDANCE WITH MIL SPEC T-27-A, EXCEPT THAT MIL SPEC T-27-A SHALL NOT APPEAR ON THE TRANSFORMER AND QUALIFICATION TESTING IS NOT REQUIRED.

BREAK DOWN TEST:  
 VOLTAGE BREAKDOWN - SECONDARY TO 240V  
 TAP ON PRIMARY SHOULD BE 30KV  
 PRIMARY TO CASE 5KV  
 SECONDARY TO CASE 30KV

HARDWARE SUPPLIED BY MFG. IN THE FOLLOWING FORM



| TMC PART NO. | CONFIGURATION   |
|--------------|---|
| TF325        | AS SHOWN.   |
| TF325 - 2    | IDENTICAL TO TF325 EXCEPT FOR THE OMISSION OF THE 215V TAP. LEAVE BLANK HOLES IN BOARD. |

|                                 |         |       |      |  |
|---------------------------------|---------|-------|------|--|
| ON CHART TF 325'S WERE TF 352   | 3-6-67  | 1799  | LRA  |  |
| TMC P/N CHART ADDED.            | 5-5-65  | 14020 | J.S. |  |
| ORIGINAL RELEASE FOR PRODUCTION | 2-16-65 |       | HLA  |  |
| EXPERIMENTAL RELEASE            | 2-15-65 |       | HLA  |  |

UNLESS OTHERWISE SPECIFIED:  
 DIMENSIONS ARE IN INCHES  
 TOLERANCES ON FRACTIONS ± 1/64 DECIMALS ± .005 ANGLES ± 1/2°  
 MAXIMUM ALLOWABLE TOLERANCES HAVE BEEN DETERMINED AND ANY DEVIATIONS WILL BE CAUSE FOR REJECTION. REMOVE ALL BURRS & SHARP EDGES

| REQ. PER UNIT | MODEL    | SECTION | ASS'Y. NO. | DATE |
|---------------|----------|---------|------------|------|
|               | GPT-200K | AP-111  |            |      |
|               | GPT-200K | AP-109  |            |      |

| REQ. ITEM   | PART NO. | DESCRIPTION       | SYMBOL          |
|---|----------|-------------------|-----------------|
| THE TECHNICAL MATERIEL CORP. MAMARONECK, NEW YORK |          |                   |                 |
| TRANSFORMER, HIGH VOLTAGE                         |          |                   |                 |
| DRAWN   |          | CHECKED           | FINAL APPROVAL  |
| TYPE & TEMPER                                     |          | HEAT TREAT. SPEC. |                 |
| FINISH & SPEC. NO.                                |          | ELEC. DES. APP.   | MECH. DES. APP. |
|   |          | SHEET OF          |                 |

TF 325 B