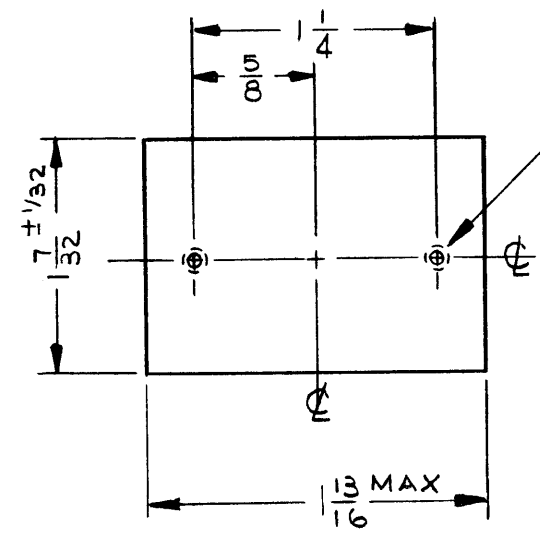
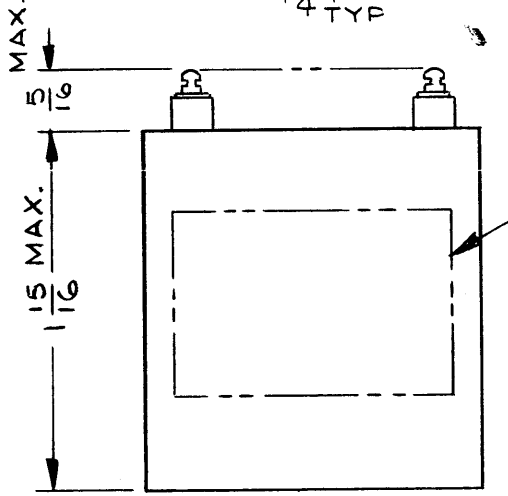


**SCHMATIC STAMP**



**NOTES**

|            |               |                |
|------------|---------------|----------------|
| 1          | GPT-10KLF     |                |
| Q'TY./UNIT | MODEL USED ON | ASS'Y. NO.     |
| SCALE      | CODE          | S401-30 (5648) |

THE CONTENTS OF THIS DRAWING ARE THE EXCLUSIVE PROPERTY OF THE TECHNICAL MATERIEL CORP. ITS UNAUTHORIZED USE OR REPRODUCTION IN WHOLE OR IN PART IS STRICTLY FORBIDDEN.

TF282

**REVISIONS**

| SYM | DESCRIPTION                     | DATE     | E.M.N. NO. | DRAFT | CHKD | APPD |
|-----|---------------------------------|----------|------------|-------|------|------|
| X   | EXP. RELEASE                    | 10/13/66 |            | JL    | JL   |      |
| Ø   | ORIGINAL RELEASE FOR PRODUCTION | 1-9-67   |            | WTO   |      |      |

**SPECIFICATIONS**

- PRIMARY WINDING:
  - VOLTAGE: 115/230 V
  - FREQUENCY: 50/60 Hz
  - PHASE: 1
- SECONDARY WINDING:
  - FULL LOAD:
    - VOLTAGE: 25 VAC
    - CURRENT: 4.5 VA
  - NO LOAD VOLTAGE: 30.5 V RMS
- BREAKDOWN VOLTAGE: 1000 VAC
- CASE DATA:
  - HERMETICALLY SEALED
  - CASE TYPE: STEEL CASE
- TERMINAL DATA:
  - NO. OF TERMINALS: 6
  - TYPE: STANDOFF, SOLDER TERMINAL
- FINISH: SMOOTH GRAY ENAMEL(TMC SPEC S115)
- MARKING:
  - ALL TERMINALS TO BE METAL STAMPED 3/32 HIGH GOTHIC
  - SCHEMATIC STAMP MARKING TO BE PER TMC SPEC S727

NOTE: TO BE MANUFACTURED IN ACCORDANCE WITH MIL-T-27, EXCEPT THAT MIL-T-27 SHALL NOT APPEAR ON CASE & QUALIFICATION TESTING IS NOT REQUIRED.

| REQ'D. | ITEM | PART NUMBER | DESCRIPTION | SYMBOL |
|--------|------|-------------|-------------|--------|
|--------|------|-------------|-------------|--------|

**BUDETTI LIST OF MATERIAL**

|          |  |
|----------|--|
| MATERIAL | THE TECHNICAL MATERIEL CORP.<br>MAMARONECK, NEW YORK |
| FINISH   | TITLE<br>TRANSFORMER, POWER                          |

|   |                                   |                 |                                      |                |
|---|-----------------------------------|-----------------|--------------------------------------|----------------|
| UNLESS OTHERWISE SPECIFIED DIMENSIONS ARE IN INCHES AND INCLUDE CHEMICALLY APPLIED OR PLATED FINISHES | DRAWN<br>J. LESHINSKI             | DATE<br>9-21-66 | FINAL APPROVAL<br><i>[Signature]</i> | DATE<br>1/9/67 |
|   | CHECKED<br><i>[Signature]</i>     | DATE            | TF282                                |                |
|   | ELECT. DES.<br><i>[Signature]</i> | DATE            |                                      |                |
|   | MECH. DES.<br><i>[Signature]</i>  | DATE            | SHEET                                | REV. LTR.      |

*m/l Allen 1/9/67*