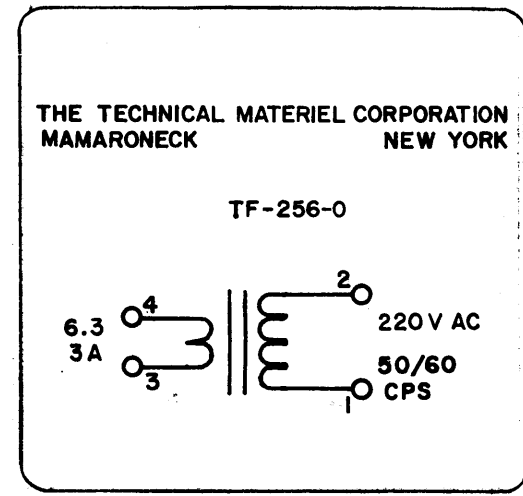
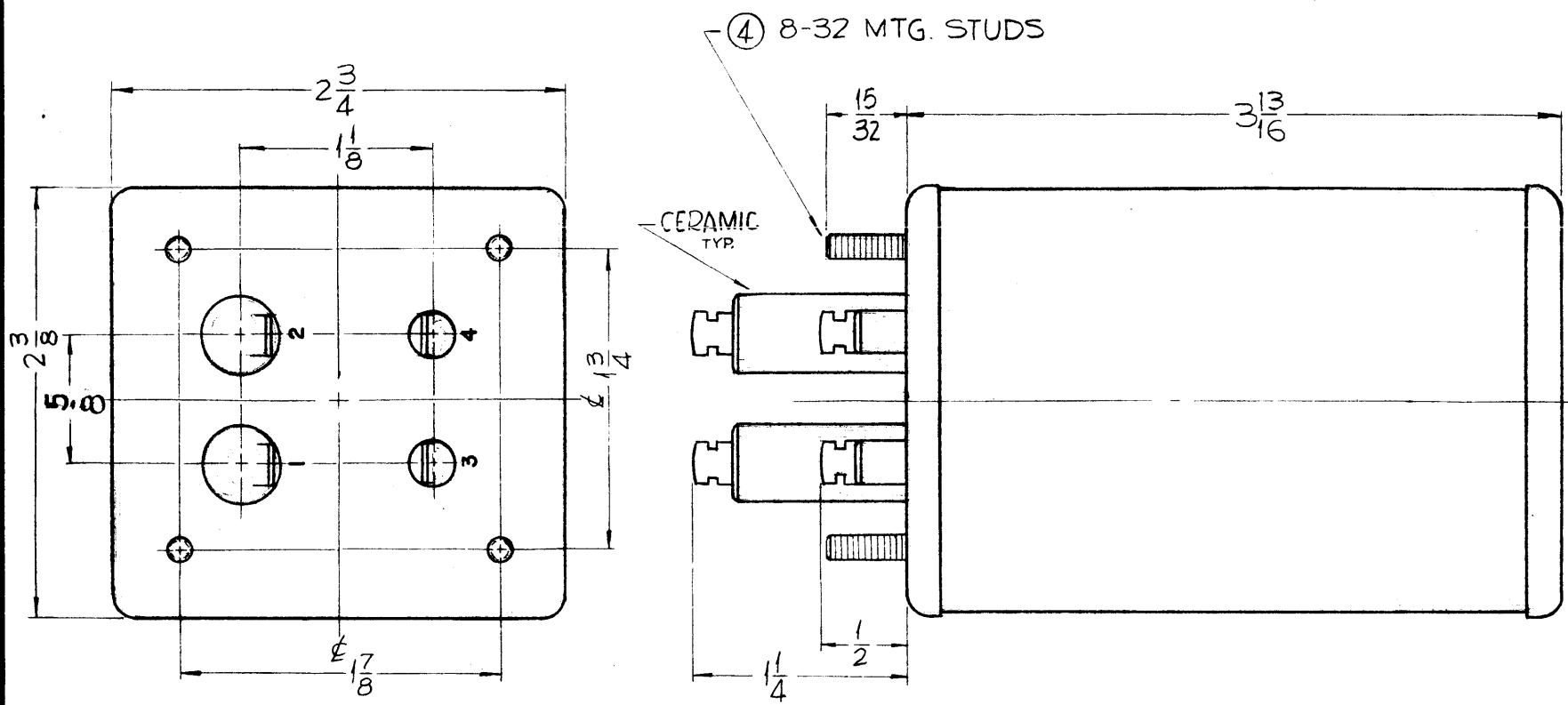


TF-256

REVISIONS					
SYM	DESCRIPTION	DATE	E.M.N. NO.	DRAFT	CHKD APPD
0	ORIGINAL RELEASE FOR PRODUCTION	3-264		A.M.	



**ELECTRICAL SPECIFICATIONS:**  
 PRIMARY ~ 6.3V AT 3 AMPS (TERM. 3, 4)  
 INSULATED ~ FOR 1,000 VAC  
 SECONDARY ~ 220V AC, 50/60 CPS  
 SINGLE PHASE.  
 INSULATED ~ FOR 10,000 VAC (TERM 1, 2)

**MECHANICAL SPECIFICATIONS**  
 CASE ~ HERMETICALLY SEALED IN  
 RECTANGULAR METAL CAN.  
 FINISH ~ S115-TMC SMOOTH GREY ENAMEL.  
 SIZE ~ 3 13/16 X 2 3/4 X 2 3/8 EXCLUDING TERMINALS.

WINDING MUST BE WOUND IN SAME DIRECTION AT ALL TIMES, TERMS 3 AND 1 MUST BE START OF WINDINGS TO ASSURE PROPER PHASING

MANUFACTURED IN ACCORDANCE WITH MIL SPEC T-27-A EXCEPT THAT MIL SPEC T-27-A SHALL NOT APPEAR ON CASE AND QUALIFICATION TESTING IS NOT REQ'D

**NOTES**

1	GPT-200K	AX-398
1	GPT-40K	AP-118
Q'TY./UNIT	MODEL USED ON	ASS'Y. NO.
SCALE 1:1	CODE A	
THE CONTENTS OF THIS DRAWING ARE THE EXCLUSIVE PROPERTY OF THE TECHNICAL MATERIEL CORP. ITS UNAUTHORIZED USE OR REPRODUCTION IN WHOLE OR IN PART IS STRICTLY FORBIDDEN.		

REQ'D.	ITEM	PART NUMBER	DESCRIPTION	SYMBOL
<b>LIST OF MATERIAL</b>				
MATERIAL SEE MECHANICAL SPECS.		THE TECHNICAL MATERIEL CORP. MAMARONECK, NEW YORK		
FINISH SEE MECHANICAL SPECS.		TITLE TRANSFORMER, TRIGGER		
UNLESS OTHERWISE SPECIFIED DIMENSIONS ARE IN INCHES AND INCLUDE CHEMICALLY APPLIED OR PLATED FINISHES		DRAWN <i>Gianfilippo</i> CHECKED <i>ACB</i> ELECT. DES. <i>CB</i> MECH. DES. <i>B</i>	DATE 1-29-63 DATE 2/10/64 DATE 2/10/64 DATE 2/10/64	FINAL APPROVAL <i>RDR</i> TF-256 SHEET
DECIMALS .X ± .05 .XX ± .01 .XXX ± .005		FRACTIONS ± 1/64 ANGLES ± 0° 30'		REV. LTR. 0