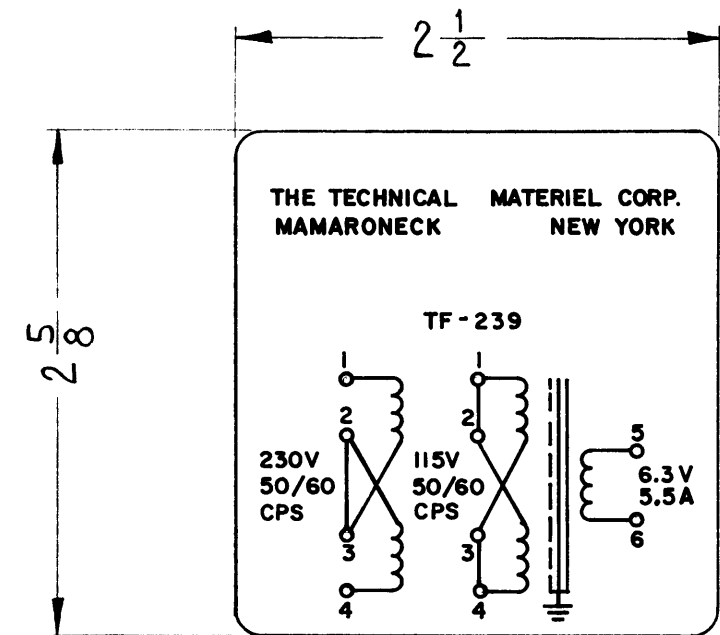
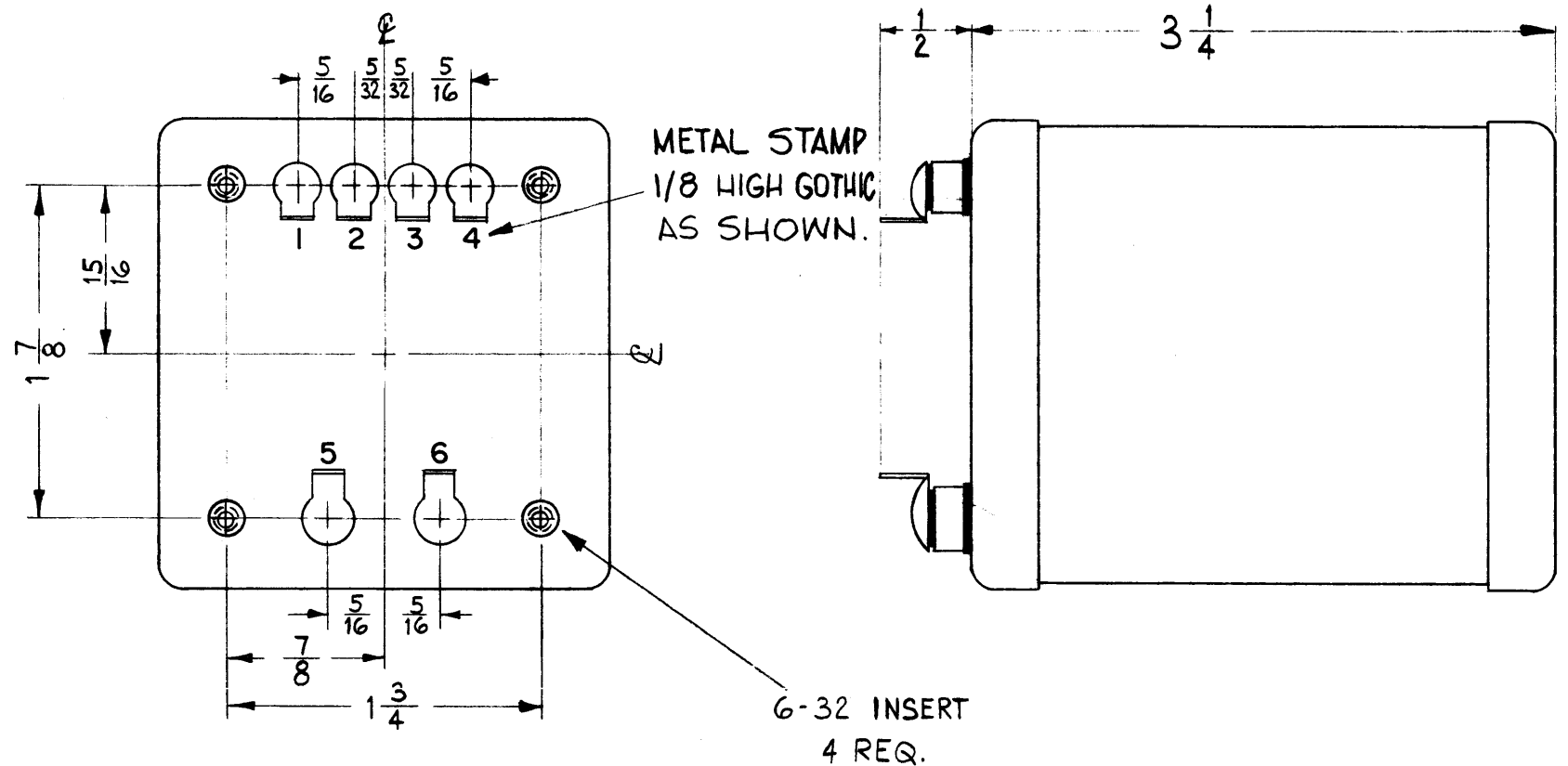


TF-239
A



ELECTRICAL SPECIFICATIONS~

PRIMARY~ TWO WINDINGS, NUMBERED AS SHOWN ON SCHEMATIC, TO BE CONNECTED IN PARALLEL FOR 115V, 50/60 CPS SINGLE PHASE INPUT & SERIES FOR 230V, 50/60 CPS SINGLE PHASE INPUT.

SECONDARY~ ONE WINDING, NUMBERED AS SHOWN ON SCHEMATIC. WINDING TO PROVIDE 6.3 VOLTS AT 5.5 AMPERES A.C. AN ELECTROSTATIC SHIELD SHALL BE INSERTED (FOIL).

MECHANICAL SPECIFICATIONS~

CASE~ HERMETICALLY SEALED STEEL.
FINISH~ S115 TMC SMOOTH GREY ENAMEL, EXCEPT TERMINAL END.

SIZE O/A~ 2 1/2 X 2 5/8 X 3 1/4 HIGH, NOT INCLUDING TERMINALS.

STAMPING~ TERMINALS SHALL BE METAL STAMPED 1/8 HIGH GOTHIC. OPPOSITE END SHALL BE STAMPED AS SHOWN.

NOTE: MANUFACTURED IN ACCORDANCE WITH MIL SPEC T-27-A EXCEPT THAT MIL SPEC T-27-A SHALL NOT APPEAR ON CASE & QUALIFICATION TESTING IS NOT REQUIRED.

SYM	DESCRIPTION	DATE	CH. NO.	DRAFTS	CHECKER	ENG. APP.
A	MOUNTING DETAIL DELETED	7-9-63	2481			

UNLESS OTHERWISE SPECIFIED:
DIMENSIONS ARE IN INCHES
TOLERANCES ON FRACTIONS ± 1/64 DECIMALS ± .005 ANGLES ± 1/2°

SCALE:
MAXIMUM ALLOWABLE TOLERANCES HAVE BEEN DETERMINED AND ANY DEVIATIONS WILL BE CAUSE FOR REJECTION.
REMOVE ALL BURRS AND SHARP EDGES

4	HFP-1		A-2382-3	2-21-62
2	SBS-1	PWR SUPPLY	A-2209-1	10-28-61
REQ. PER UNIT	MODEL	SECTION	ASS'Y. NO.	DATE
USED ON				

REQ.	ITEM	PART NO.	DESCRIPTION	SYMBOL
			THE TECHNICAL MATERIEL CORP. MAMARONECK, NEW YORK	
STOCK SIZE			TRANSFORMER, FILAMENT	
STEEL				
MATERIAL				
			W.A.F. RUTZKE	Ron Kohn
TYPE & TEMPER	HEAT TREAT. SPEC.	DRAWN	CHECKER	FINAL APPROVAL
SEE NOTE		RK	RK	TF-239
FINISH & SPEC. NO.		ELEC. DES. APP.	MECH. DES. APP.	A