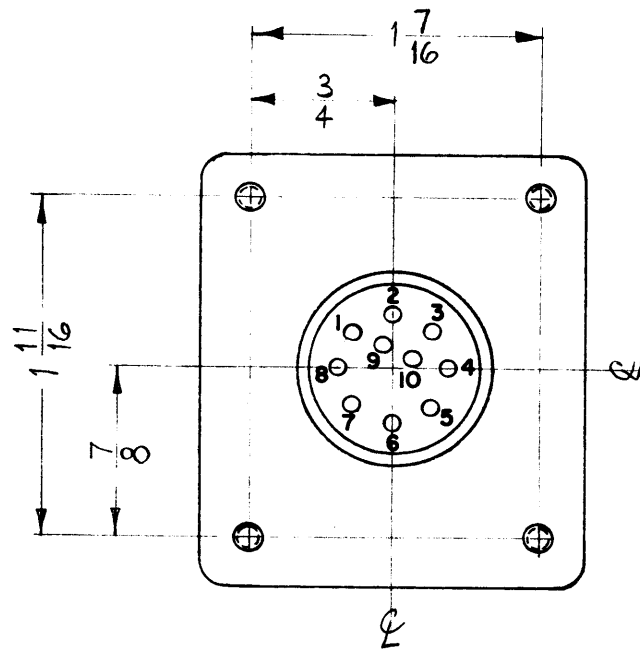
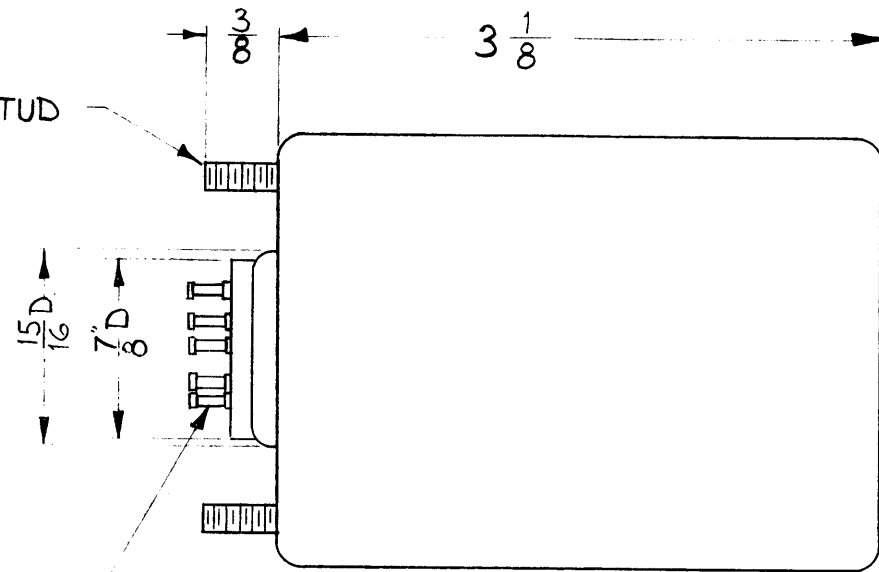


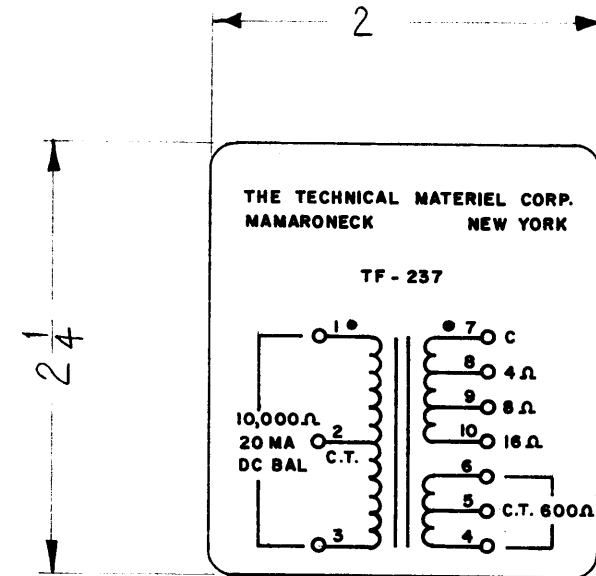
TF-237



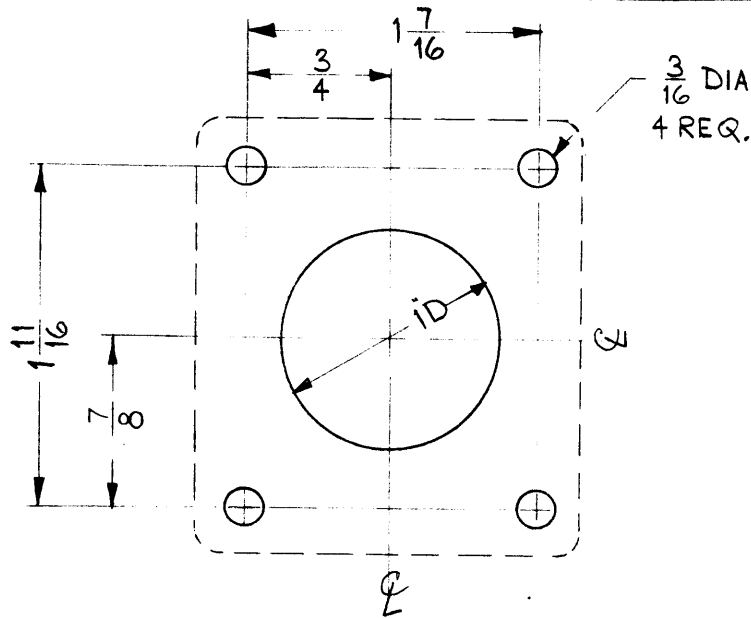
6-32 MTG STUD
4 REQ.



TURRET TYPE TERMINALS



BLACK GOTHIC LETTERING
AS SHOWN.



"DRILLING PLAN" DETAIL

ELECTRICAL SPECIFICATIONS ~

PRIMARY ~ 10,000 Ω C.T.
 DC CURRENT ~ 20 MA BALANCED
 MAX. DC UNBALANCE ~ 5 MA
 SECONDARY ~ 1 ~ 4 Ω, 8 Ω, 16 Ω TO COMMON
 2 ~ 600 Ω C.T.
 POWER ~ 5 W
 FREQ. RESPONSE ~ WITHIN 3DB, 50 TO 20,000 CPS.
 IMPEDANCE MATCH TO BE OBTAINED WHEN
 ONLY ONE SECONDARY WINDING IS USED.
 INSULATION RESISTANCE 1500 VOLTS.
 POLARITY OF TERMINALS #7 AND #1 MUST
 BE THE SAME.

MECHANICAL SPECIFICATIONS ~

CASE ~ HERMETICALLY SEALED, STEEL
 FINISH ~ S115 TMC SMOOTH GREY ENAMEL,
 EXCEPT TERMINAL END.
 SIZE O/A ~ 2 X 2 1/4 X 3 1/8 HIGH, EXCLUDING
 STUDS & TERMINALS.
 STAMPING ~ TERMINALS SHALL BE METAL STAMPED,
 OPPOSITE END SHALL BE STAMPED
 AS SHOWN.

NOTE ~

MANUFACTURED IN ACCORDANCE WITH MIL SPEC T-27-A
 EXCEPT THAT MIL SPEC T-27-A SHALL NOT APPEAR ON
 CASE & QUALIFICATION TESTING IS NOT REQUIRED.

| | | | | | | |
|--|---|--|---------|--------|---------|-----------|
| | | | | | | |
| A | Polarity Of Terminals #8 & #7 Clarified | 12-29-61 | 6080 | J. E. | | |
| SYM | DESCRIPTION | DATE | CH. NO. | DRAFTS | CHECKER | ENG. APP. |
| UNLESS OTHERWISE SPECIFIED: | | SCALE: | | | | |
| DIMENSIONS ARE IN INCHES | | MAXIMUM ALLOWABLE TOLERANCES HAVE BEEN DETERMINED AND ANY DEVIATIONS WILL BE CAUSE FOR REJECTION. REMOVE ALL BURRS AND SHARP EDGES | | | | |
| TOLERANCES ON FRACTIONS ± 1/64 DECIMALS ± .005 ANGLES ± 1/2° | | | | | | |

| | | | | |
|---------------|-------|---------|------------|---------|
| 2 | HFA-1 | | | 10-3-61 |
| 2 | SBS-1 | | | 10-3-61 |
| REQ. PER UNIT | MODEL | SECTION | ASS'Y. NO. | DATE |
| USED ON | | | | |

| REQ. ITEM | PART NO. | DESCRIPTION | SYMBOL |
|--------------------|-------------------|---|-----------------|
| STOCK SIZE | | THE TECHNICAL MATERIEL CORP. MAMARONECK, NEW YORK | |
| STEEL | | TRANSFORMER, AUDIO POWER | |
| MATERIAL | | | |
| TYPE & TEMPER | HEAT TREAT. SPEC. | DRAWN | CHECKER |
| | | | |
| FINISH & SPEC. NO. | | ELEC. DES. APP. | MECH. DES. APP. |
| | | | |