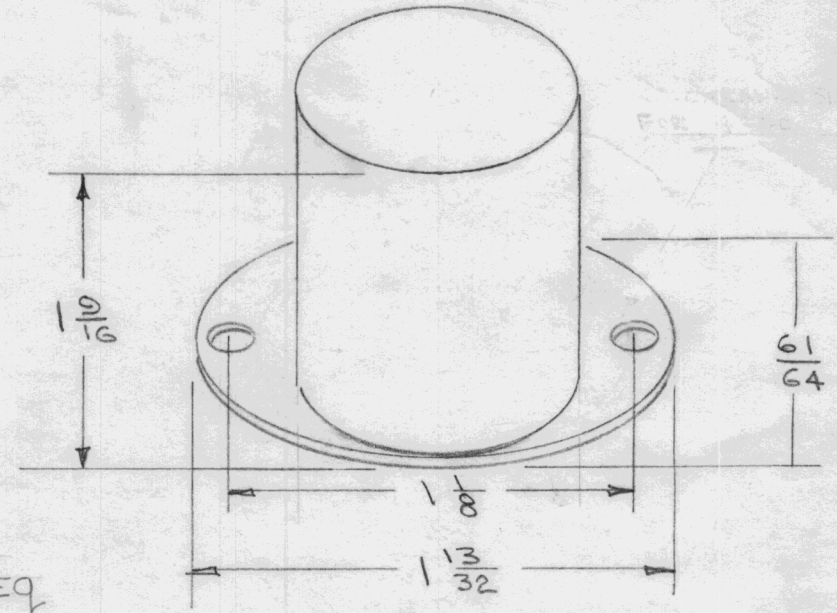
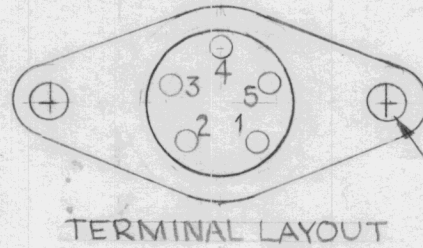
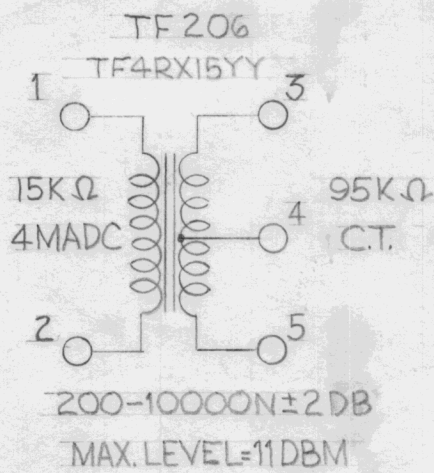


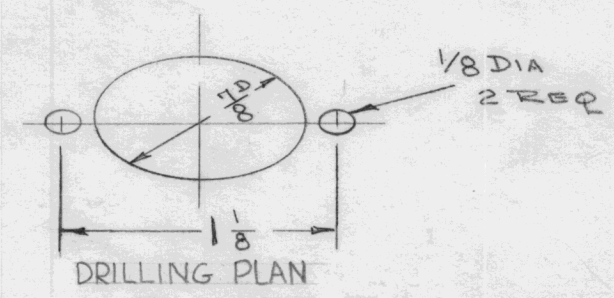
ELECTRICAL SPECIFICATIONS

PRI. IMP. Ω 15,000
 SEC. IMP. Ω 95,000 C.T.
 UNBAL DC IN PRI. MA 4
 RESPONSE ± 2 db 200, -10,000 ~
 MAX LEVEL dbm +11
 MIL TYPE TF4RX15YY
 5 TERMINAL SOLDER LUG TYPE
 CASE HERMETICALLY SEALED
 FINISH-SMOOTH GRAY ENAMEL (S-115)

REQ. PER. UNIT	USED ON			TF-206	A
	MODEL	ASS'Y. NO.	DATE		



$\frac{1}{8}$ DIA 2 REQ



STAMP AS SHOWN-BLACK GOTHIC

							REQ.	ITEM	PART NO.	DESCRIPTION	SYMBOL			
							THE TECHNICAL MATERIEL CORP. MAMARONECK, NEW YORK TRANSFORMER AUDIO							
							STOCK SIZE							
							MATERIAL							
A	1	ELEC SPECS ADDED	3-20-59	1196	DM	RWB								
ISSUE	ITEM	CHANGED FROM	DATE	CH. NO.	DRAFTS	CHECKER	ENG. APP.							
TOLERANCES			SCALE:											
DEC. DIM. \pm			MAXIMUM ALLOWABLE TOLERANCES HAVE BEEN DETERMINED AND ANY DEVIATIONS WILL BE CAUSE FOR REJECTION. REMOVE ALL BURRS AND SHARP EDGES				TYPE & TEMPER		HEATTREAT. SPEC.		DRAWN			
FRAC. DIM. \pm							FINISH & SPEC. NO.		ELEC. DES. APP		MECH. DES. APP		FINAL APPROVAL	
ANGULAR DIM. \pm													TF-206 A	