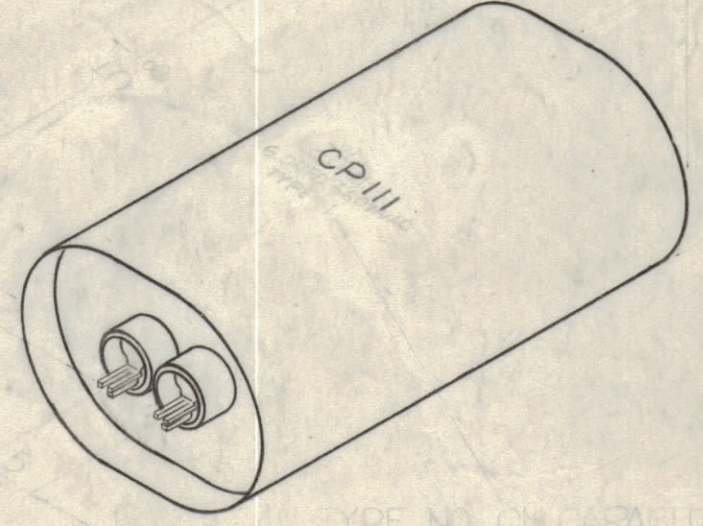


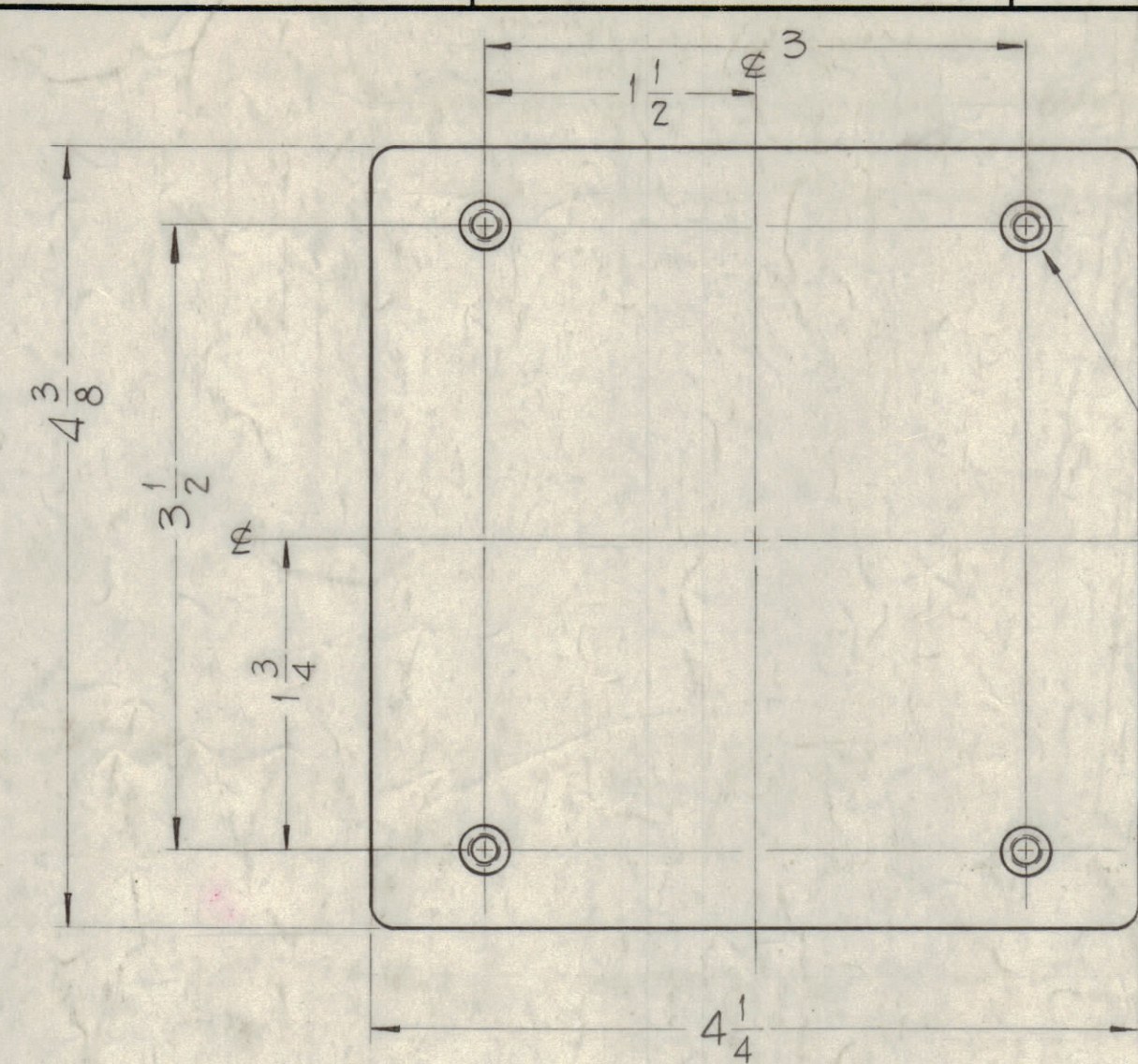
MOUNTING DETAIL

SCALE 1/4" = 1" (DO NOT SCALE)
 NOTE: FOR PURCHASING PURPOSES SEE
 FOR SPARE PARTS USE NOTE:

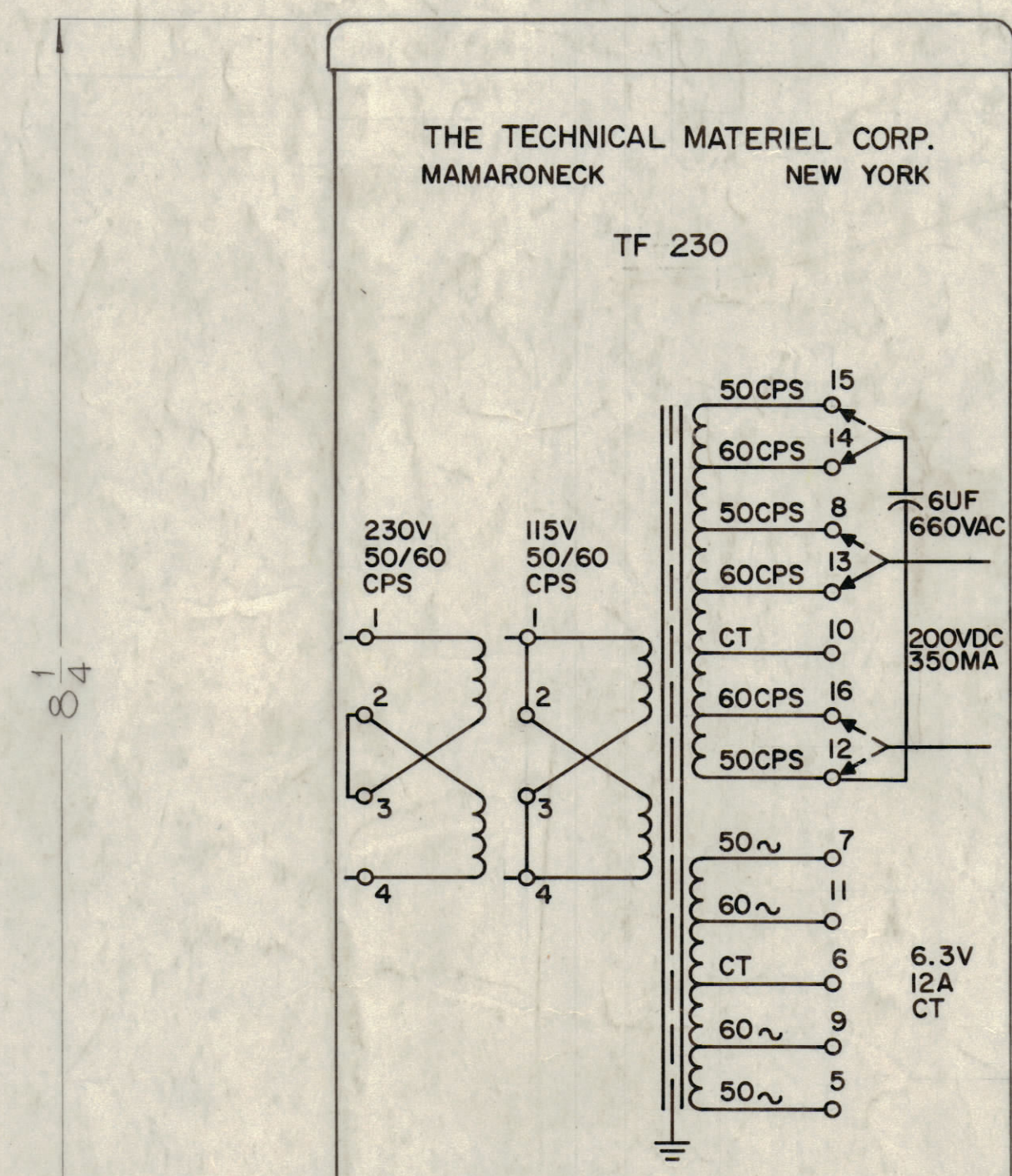


TYPE NO. ON CAPACITOR MUST BE THE SAME AS TYPE NO. ON TRANSFORMER.

CAPACITOR DETAIL
 SEE CP111 FOR DIMENSIONS



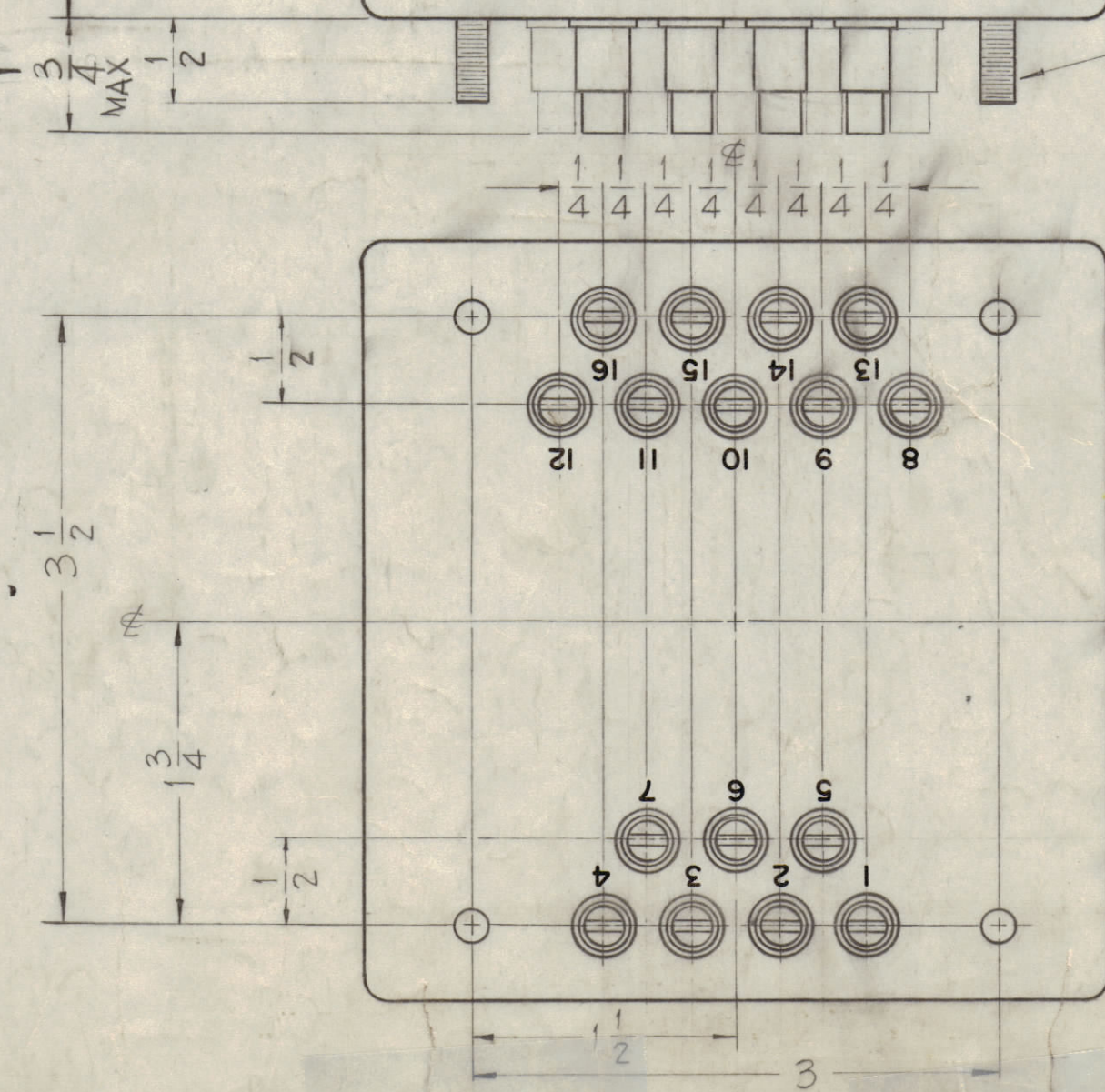
10-32 THREADED INSERT,
 3/8 DEEP. (4 REQ'D.)



THE TAP ON TRANSFORMER IS NOT TO BE USED AS THE TAP ON THE CAPACITOR. FOR PURCHASING PURPOSES SEE FOR SPARE PARTS USE NOTE.

TERMINAL STYLE OPTIONAL PROVIDED MAXIMUM HEIGHT IS NOT EXCEEDED.

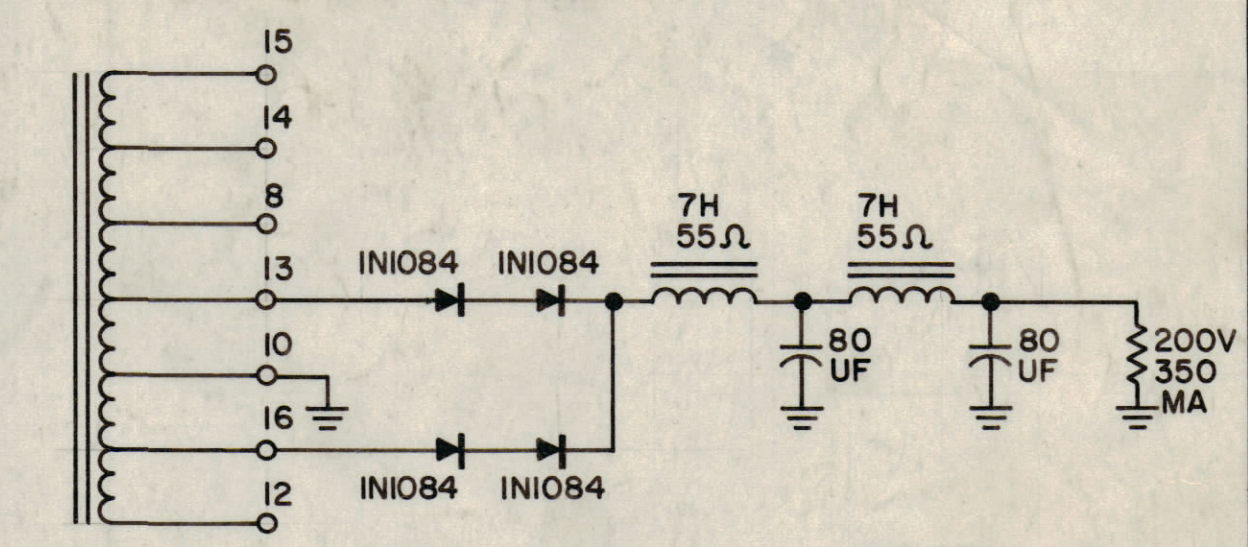
④ 10-32 MOUNTING STUDS (SEE MOUNTING DETAIL)



NOTICE TO PERSONS RECEIVING THIS DRAWING

THE TECHNICAL MATERIEL CORPORATION claims proprietary right in the material disclosed herein. This drawing is issued in confidence for engineering information only and may not be reproduced or used to manufacture anything shown herein without permission from THE TECHNICAL MATERIEL CORPORATION to the user. This drawing is loaned for mutual assistance and is subject to recall at any time.

Property of:
 THE TECHNICAL MATERIEL CORPORATION
 MAMARONECK, NEW YORK



TRANSFORMER CIRCUIT

ELECTRICAL SPECIFICATIONS

TRANSFORMER TO BE USED IN CIRCUIT AS SHOWN ABOVE.

PRIMARY

WHEN PARALLEL, CONNECTED 115V AC AT 50/60 CPS SINGLE PHASE.
 WHEN SERIES, CONNECTED 230V AC AT 50/60 CPS SINGLE PHASE.

SECONDARY

- VOLTAGE TO BE SUCH AS TO OBTAIN 200V DC AT 350 MA.
- 6.3V AC AT 12 AMPS CENTER TAPPED.
- REGULATION BETTER THAN 2% FOR LINE VOLTAGE VARIATION OF 95-130V AC OR 190-260V AC.
- ELECTROSTATIC SHIELD SHALL BE INSERTED (FOIL).
- CAPACITOR TO BE SUPPLIED BY TRANSFORMER MANUFACTURER SEE CAPACITOR DETAIL.

MECHANICAL SPECIFICATIONS

- CASE — HERMETICALLY SEALED IN RECTANGULAR STEEL CASE.
- FINISH — S 115 TMC SMOOTH GRAY ENAMEL, EXCEPT TERMINAL & STUD END.
- SIZE — 4-1/4 X 4-3/8 X 8-1/4 EXCLUSIVE OF TERMINALS.
- STAMPING — TERMINALS SHALL BE METAL STAMPED 1 THRU 16 AS SHOWN. LETTERING AND LINEWORK ON SCHEMATIC AS SHOWN.

NOTE

TRANSFORMER SHALL BE MANUFACTURED IN ACCORDANCE WITH MIL SPEC. T-27-A, EXCEPT THAT MIL SPEC. T-27-A SHALL NOT APPEAR ON CASE. QUALIFICATION TESTING IS NOT REQUIRED.

PURCHASING NOTES

FOR PRODUCTION PURPOSES — TRANSFORMER AND CAPACITOR (TMC# CP 111) MUST BE PURCHASED AS A MATCHED SET — INDICATED BY IDENTICAL TYPE NO.

FOR SPARE PARTS USE — THE TRANSFORMER AND CAPACITOR MAY BE SUPPLIED AS SEPARATE ITEMS ONLY IF CUSTOMER SPECIFIES IDENTICAL TYPE NO.

D	ON CAPACITOR DETAIL ALL DIMS & NOTES DELETED ON PURCHASING NOTES. FOR SPARE PARTS USE IDENT. TYPE NO. & NOTES DELETED	5-23-61	18242	S.D.L.	TRH		
C	3/4 WAS 5/8; ADDITRN NOTE	3/21/61	15990	H.C.A.			
B	5/8 DIM. WAS 11/16	1/21/61	10296	S.D.L.			
A	On Stamping connection on bottom of 6UF Cap reworked to terminal	2-17-61	5272	S.D.L.			
SYM	ZONE	DESCRIPTION	DATE	CH. NO.	DRAFTS	CHECKER	ENG. APP.
UNLESS OTHERWISE SPECIFIED:			SCALE FULL, DO NOT SCALE				
DIMENSIONS ARE IN INCHES			MAXIMUM ALLOWABLE TOLERANCES HAVE BEEN DETERMINED AND ANY DEVIATIONS WILL BE CAUSE FOR REJECTION. REMOVE ALL BURRS & SHARP EDGES				
TOLERANCES ON FRACTIONS ± 1/64			DECIMALS ± .005		ANGLES ± 1/2°		

1	CPP-5			4-6-61
REQ. PER UNIT	MODEL	SECTION	ASSY. NO.	DATE
				USED ON

REQ. ITEM	PART NO.	DESCRIPTION	SYMBOL
THE TECHNICAL MATERIEL CORP. MAMARONECK, NEW YORK			
TRANSFORMER VOLTAGE REGULATED			
DRAWN		CHECKED	FINAL APPROVAL
J.D.			TF 230
ELEC. DES. APP.		MECH. DES. APP.	SHEET OF