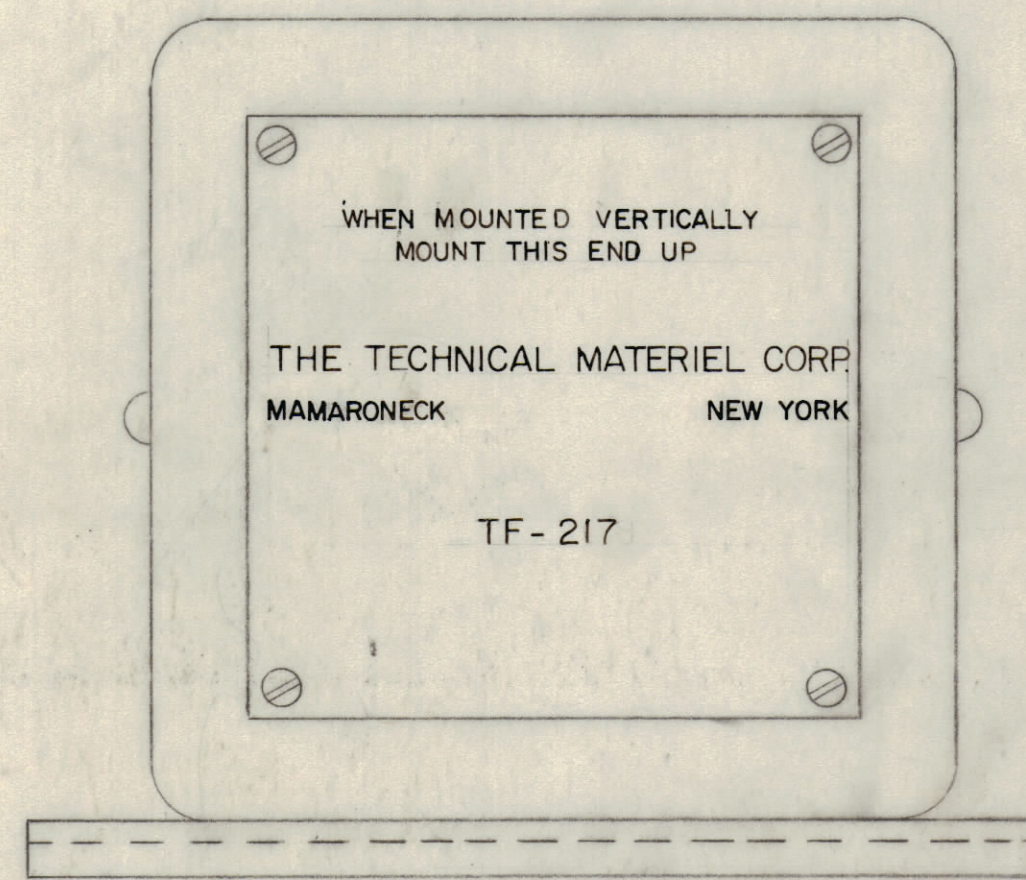
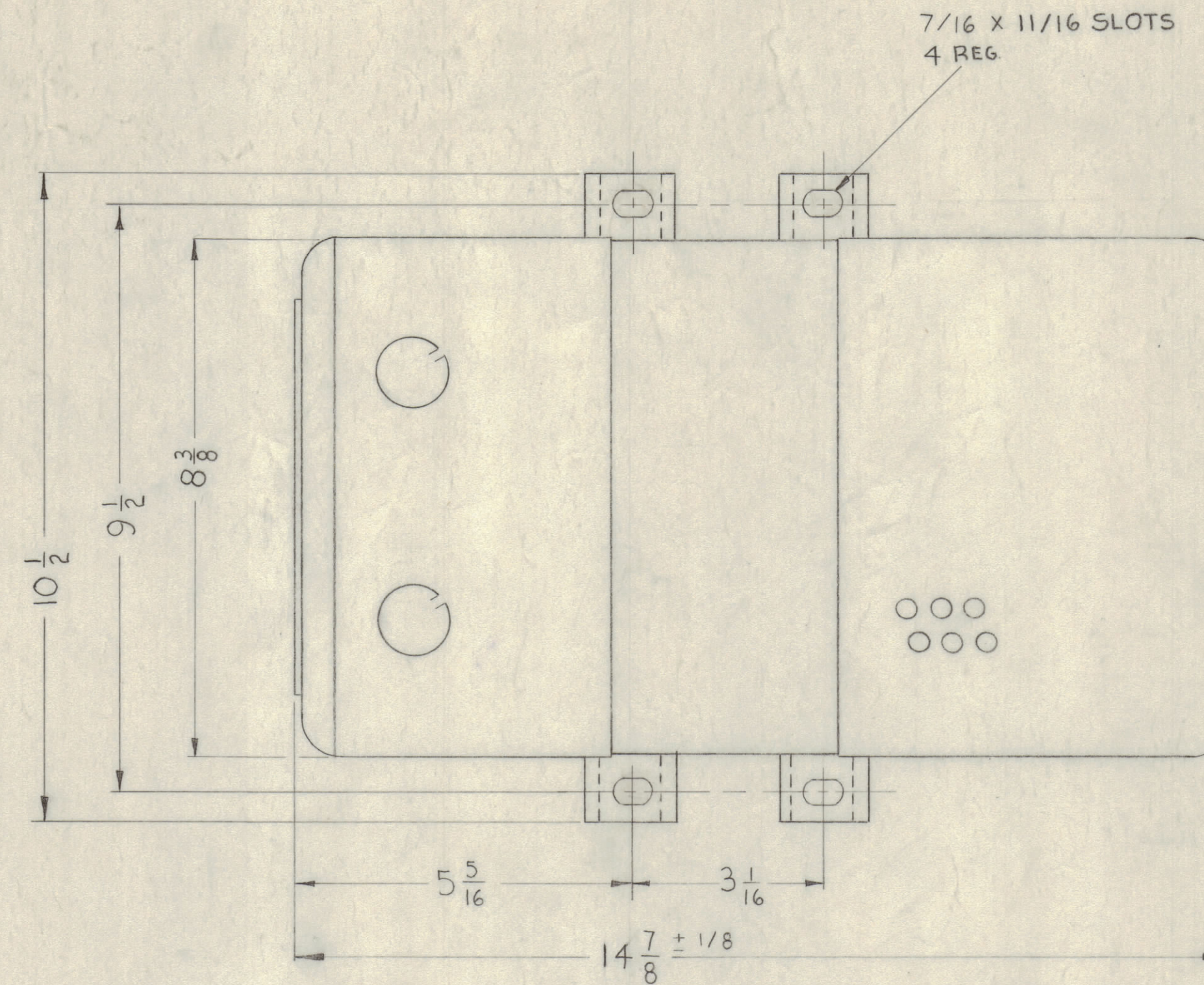


IF IT IS FOUND DESIRABLE TO CHANGE ANY TOLERANCE OR OTHER DETAIL SPECIFIED ON THIS DRAWING NOTIFY THE PURCHASER PROMPTLY.  
 MAXIMUM ALLOWABLE TOLERANCES HAVE BEEN DETERMINED AND DEVIATIONS WILL BE CAUSE FOR REJECTION. REMOVE ALL BURRS AND SHARP EDGES

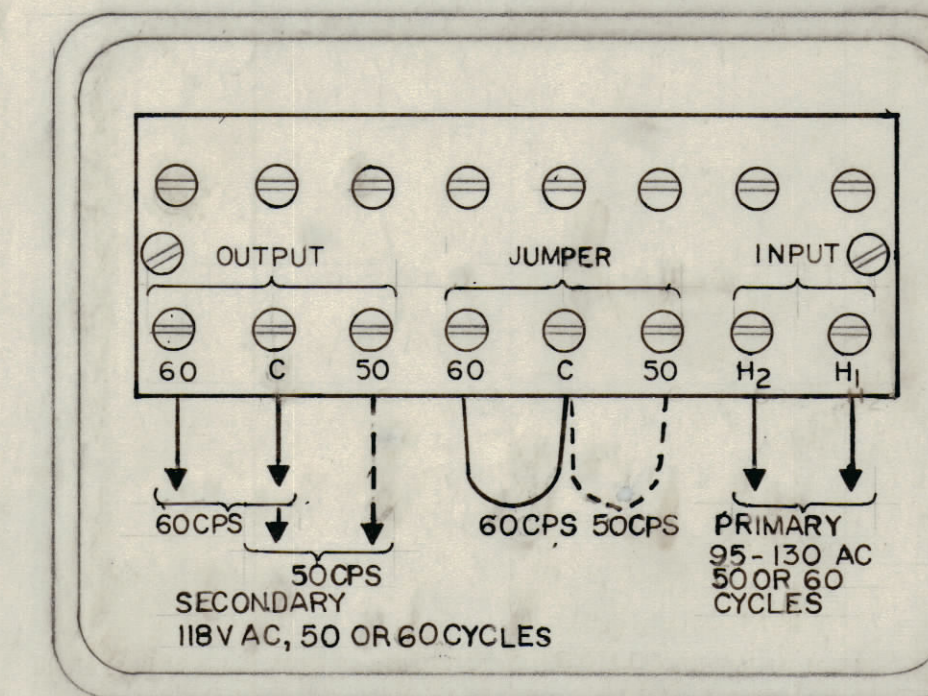
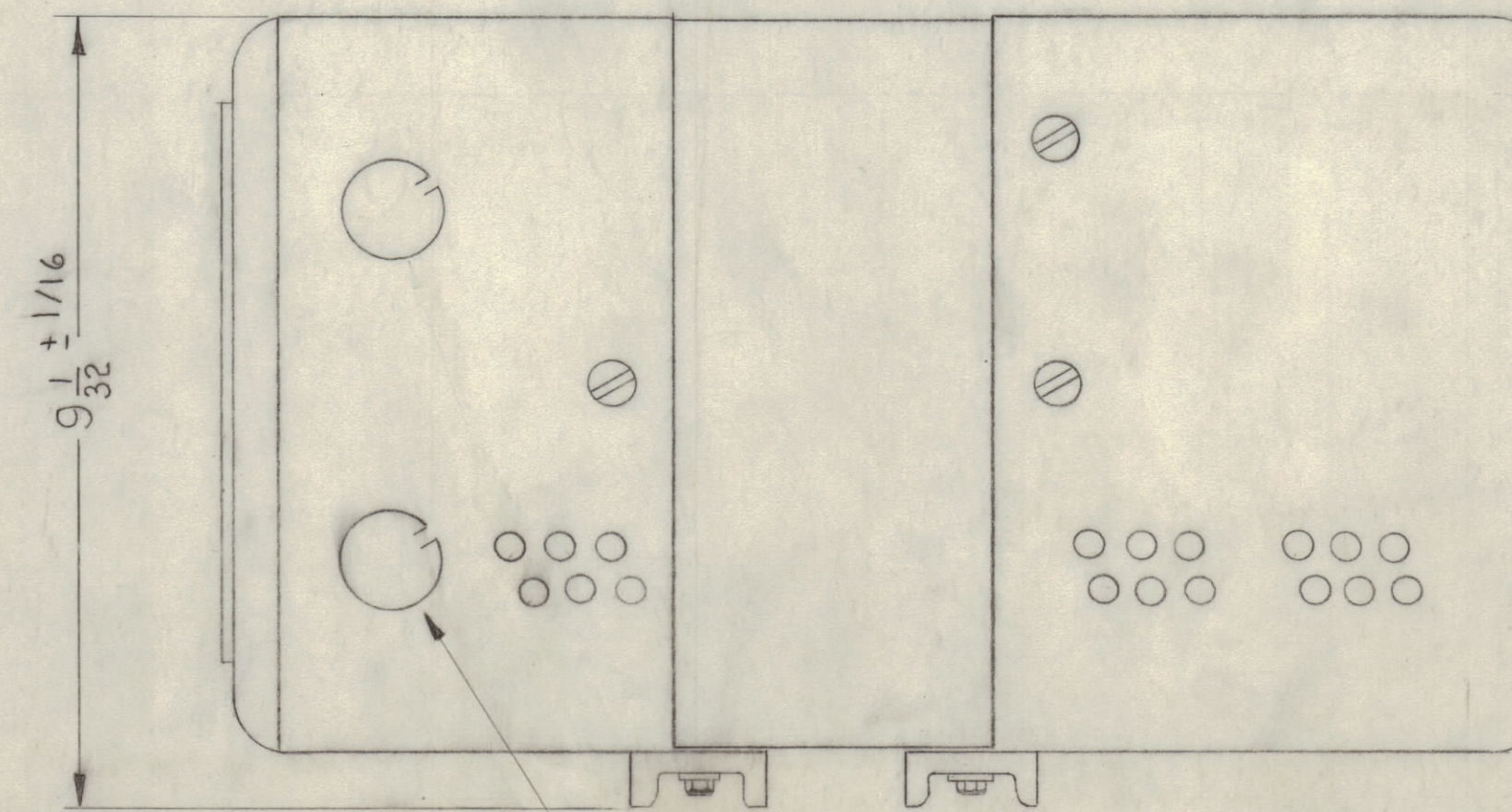
**NOTICE TO PERSONS RECEIVING THIS DRAWING:**

THE TECHNICAL MATERIEL CORPORATION claims proprietary right in the material disclosed hereon. This drawing is issued in confidence for engineering information only and may not be reproduced or used to manufacture anything shown hereon without permission from THE TECHNICAL MATERIEL CORPORATION to the user. This drawing is loaned for mutual assistance and is subject to recall at any time.

Property of:  
 THE TECHNICAL MATERIEL CORPORATION  
 MAMARONECK, NEW YORK

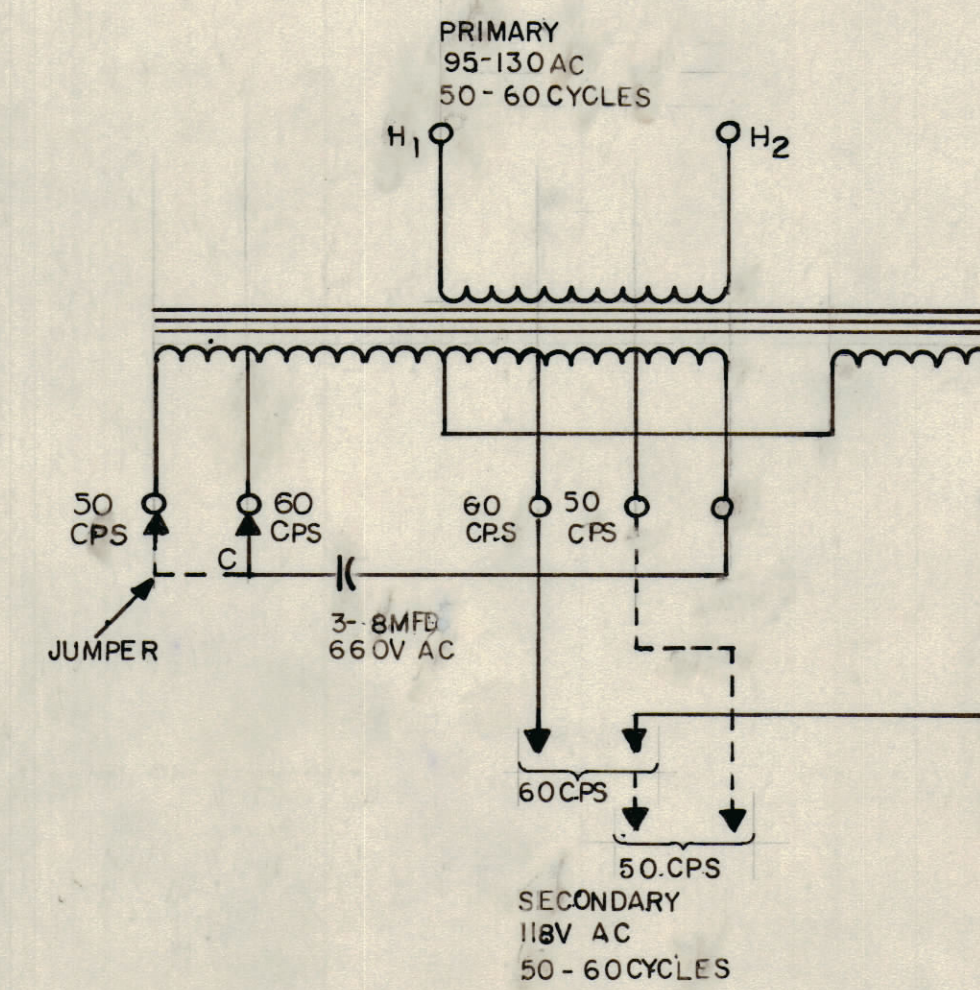


END VIEW SHOWN



NOTES ~  
 1~ WIRING DIAGRAM TO BE STAMPED ON INSIDE OF COVER  
 2~ LETTERING APPROX. AS SHOWN, WHITE GOTHIC.

STAMPING, WIRING DIAGRAM.



NOTE ~ DOTTED LINES REPRESENT 50 CYCLE OPERATION

SCHEMATIC DIAGRAM

**MANUFACTURE'S SPECIFICATIONS**

- 1~ CORE AND COIL IN VARNISH.
- 2~ APPLY DARK GREY FINISH TO LAMINATION AFTER UNIT IS ASSEMBLED.
- 3~ GROUND CAPACITORS TO CHASSIS AT ONE POINT.
- 4~ WEDGE COILS
- 5~ MICA "U" INSULATORS PROTRUDE 1/4" TO 3/4" MAX. BEYOND STACK, TERMINAL SIDE ONLY.

**MECHANICAL SPECIFICATIONS**

- 1~ CASE ~ STEEL
- 2~ FINISH ~ SMOOTH GREY ENAMEL

**ELECTRICAL SPECIFICATIONS**

- 1~ PRIMARY ~ 95-130 AC, 50-60 CYCLES.
- 2~ SECONDARY ~ 118V/1KVA
- 3~ VOLTAGE REGULATION ~ ± 1% OVER PRIMARY RANGE

NOTE 1  
 WHEN MOUNTED IN MODEL OPT-108 USE TMC ADAPTER PLATE (P.M. 580) INSTEAD.

TF-217

ISSUE	ITEM	CHANGED FROM	DATE	CN. NO.	DRAFTS	CHECKER	ENG. APP.
TOLERANCES		SCALE:					
ALL OTHERS	DEC. DIM. ±	FRAC. DIM. ±		ANGULAR DIM. ±			
A		DRILL, PUNCH, COMMERCIAL STOCK SIZES AND MANUFACTURERS TOLERANCES ARE NOT INCLUDED.					

REQ. ITEM	PART NO.	DESCRIPTION	SYMBOL
		THE TECHNICAL MATERIEL CORP. MAMARONECK, NEW YORK	
STOCK SIZE		TRANSFORMER, VOLTAGE REGULATOR	
MATERIAL	WEIGHT PER PC.		
TYPE & TEMPER	1/7160		
HEAT TREAT. SPEC.	CHECKED	FINAL APPROVAL	
FINISH & SPEC. NO.		TF-217	

REQ. PER UNIT	MODEL	PROJECT NO.	ASSY. NO.	DATE