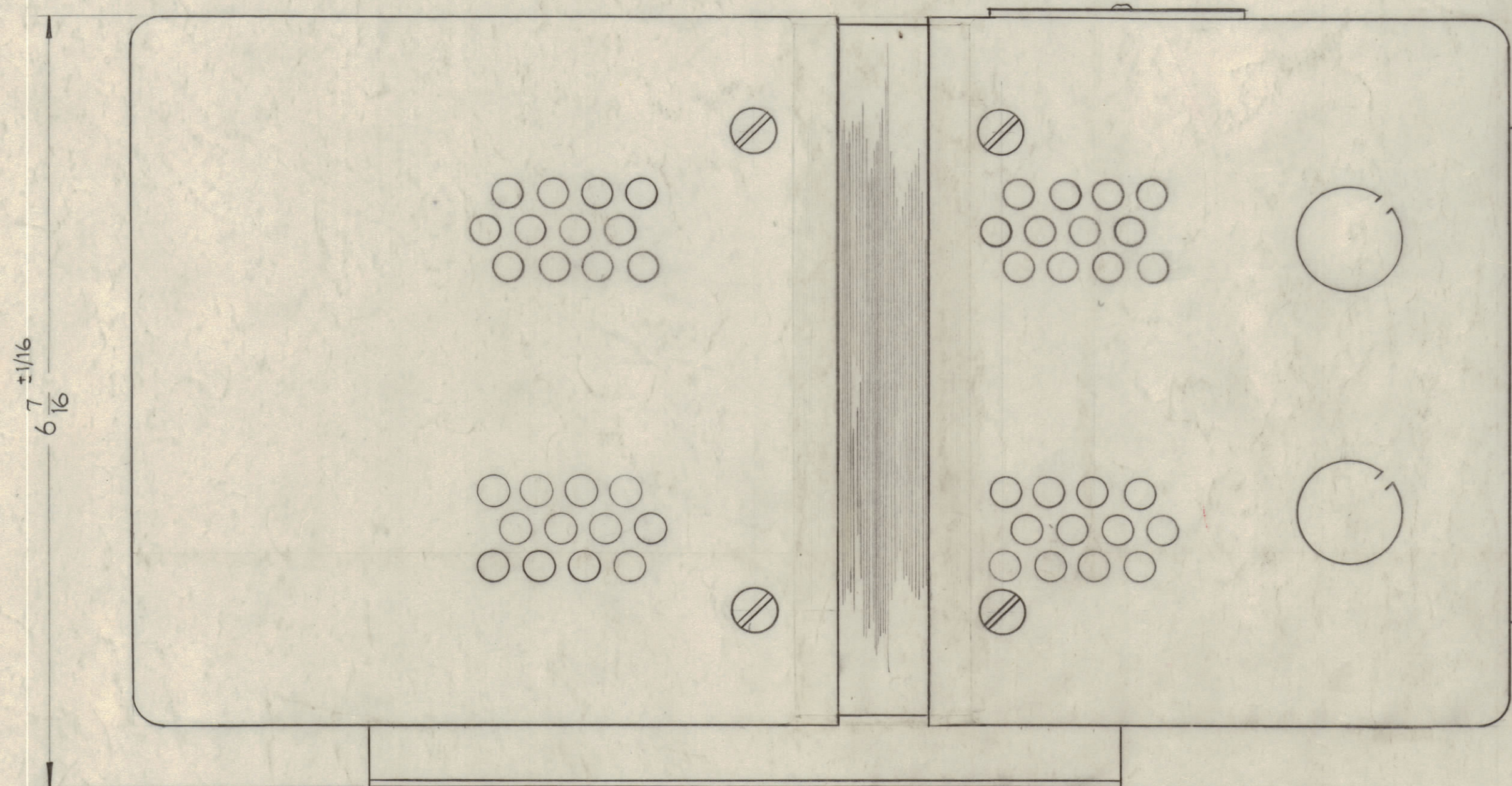
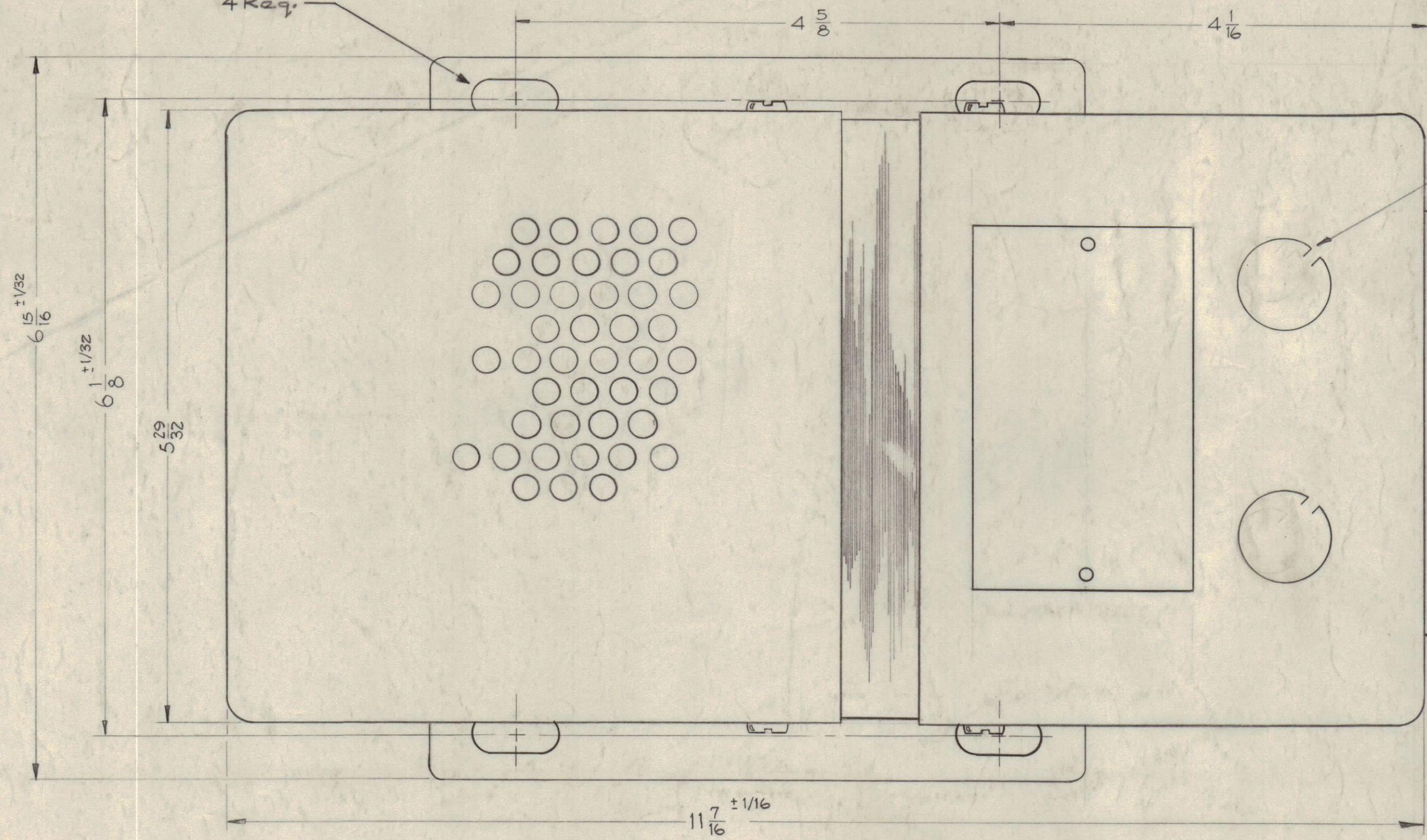
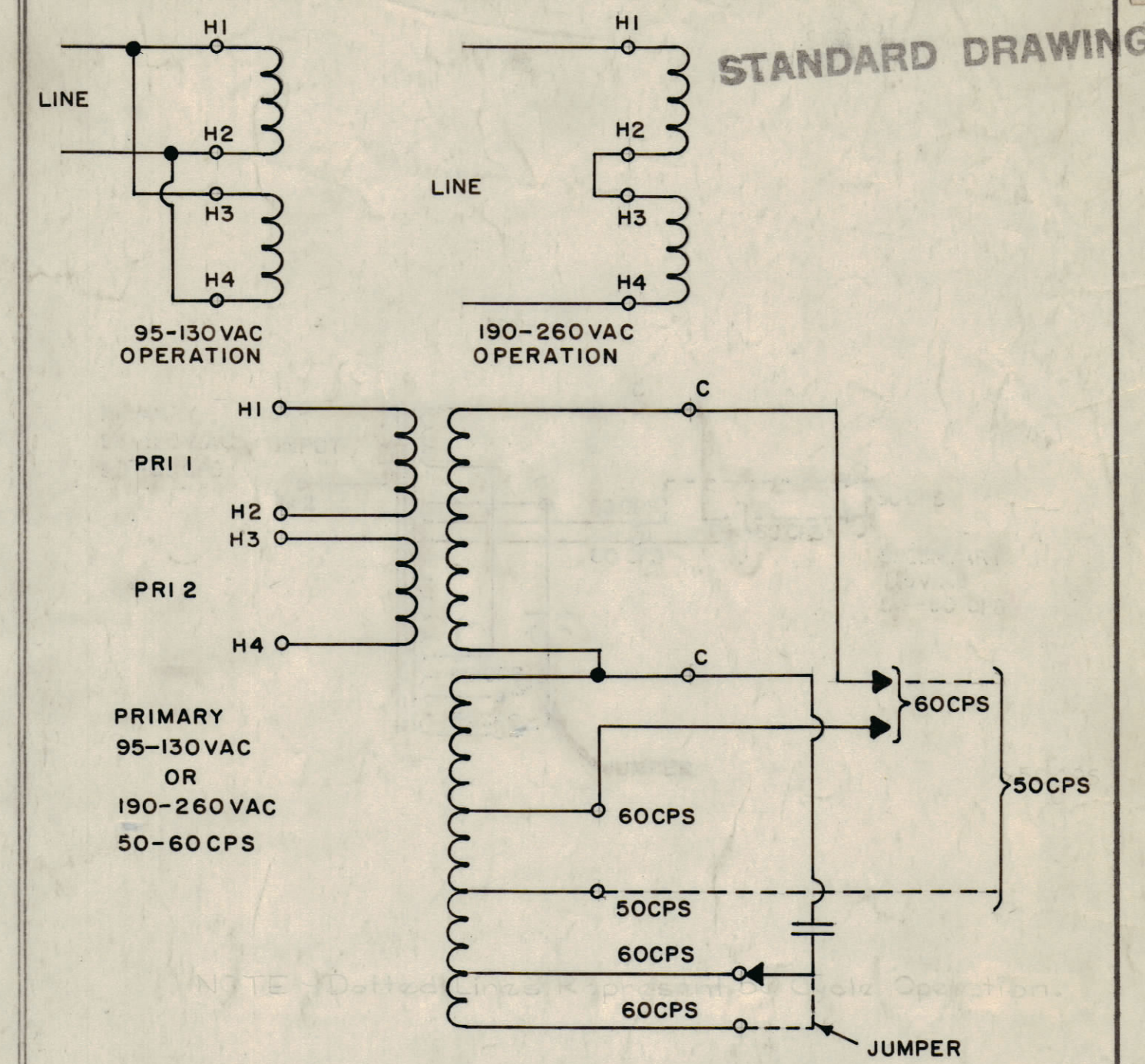
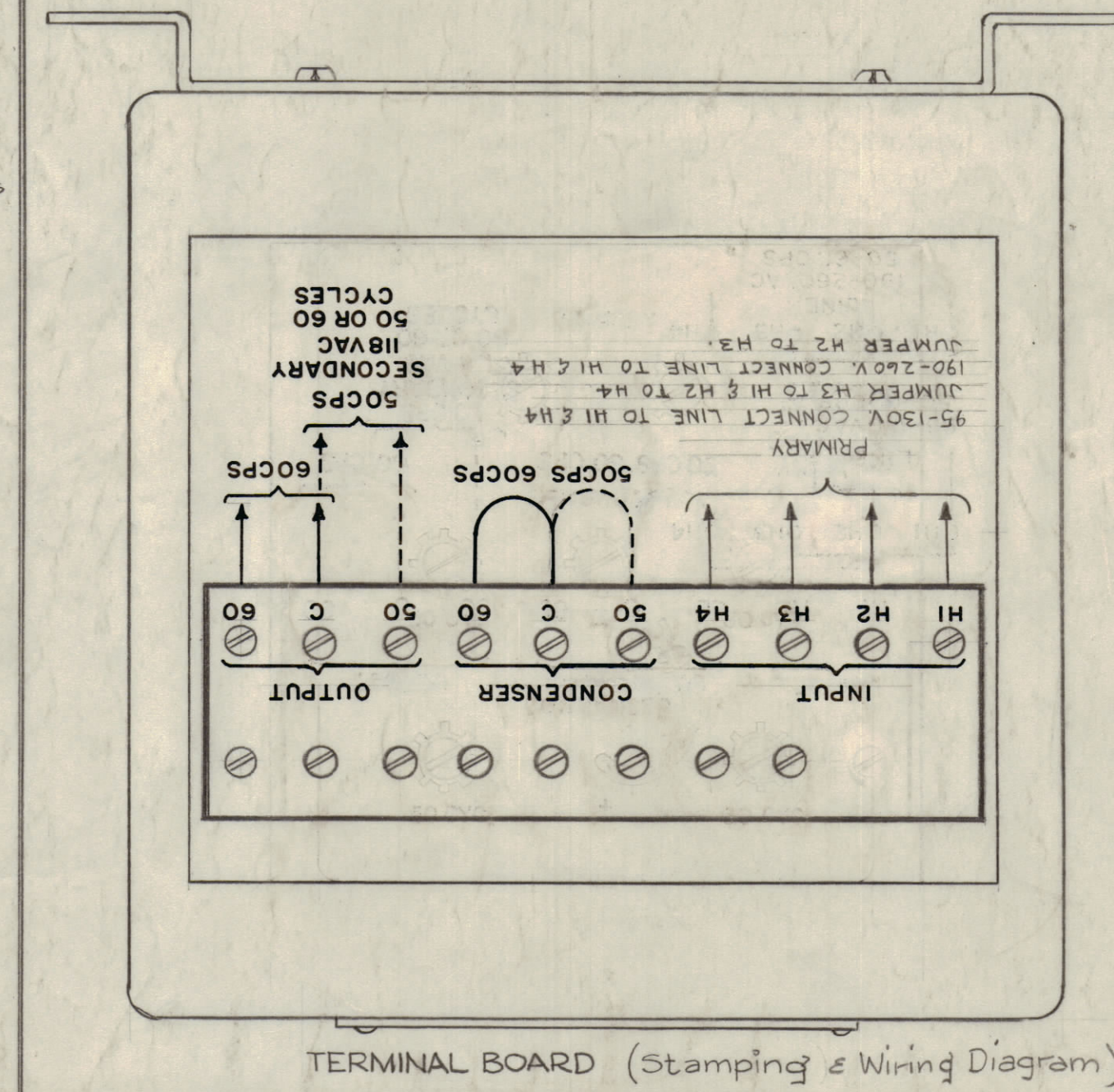


IF IT IS FOUND DESIRABLE TO CHANGE ANY TOLERANCE OR OTHER DETAIL SPECIFIED ON THIS DRAWING NOTIFY THE PURCHASER PROMPTLY.  
 MAXIMUM ALLOWABLE TOLERANCES HAVE BEEN DETERMINED AND DEVIATIONS WILL BE CAUSE FOR REJECTION. REMOVE ALL BURRS AND SHARP EDGES

SLOTS-3/8x7/16  
 4 Req.

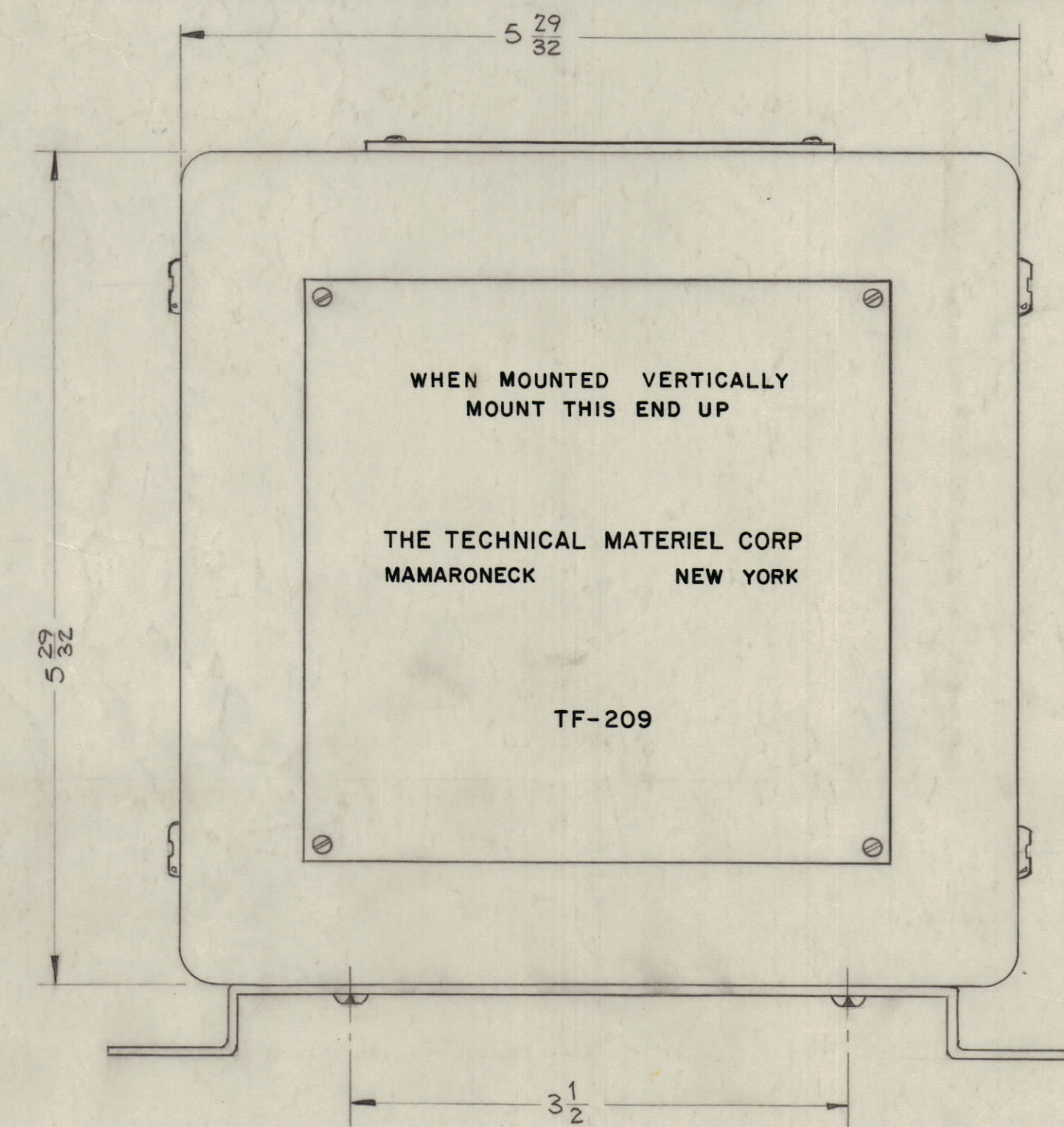


NOTE ~ LETTERING APPROX. AS SHOWN, WHITE GOTHIC.  
 WIRING DIAGRAM TO BE STAMPED ON INSIDE OF COVER.



NOTE: DOTTED LINES REPRESENT 50 CYCLE OPERATION

~ SCHEMATIC DIAGRAM ~



ELECTRICAL SPECIFICATIONS

1. PRIMARY: 95-130VAC OR 190-260VAC
2. SECONDARY: 118V (50/60 CFS)
3. RATED CAPACITY: 250 VA
4. REGULATED OUTPUT: 118V ± 1% Over Primary Range.
5. CAPACITOR: 3 MFD (2EA)

MECHANICAL SPECIFICATIONS

1. CASE: Steel
2. FINISH: Smooth Grey Enamel
3. H - 5 15/16  
 W - 5 15/16  
 L - 11 1/8
4. CAPACITOR CASE SHALL BE GROUNDED TO CHASSIS BY 1/8" GROUND STRAP

C	ON TERM. BOARD (STAMPING & WIRING DIAGRAM); WIRING DIAGRAM DELETED; PRIMARY NOTE ADDED	3-23-65	13760	22	JCB	JCB
B	T.B. & SCHEM. DIAG. REDRAWN ON ELEC. SPECS. IT-5 ADDED ON MECH. SPECS. IT-4 ADDED	4-24-64	11292	15B	@	SC
A	CHGD. SEC. SPEC FROM "118V/1KVA" TO 118V Error	12/23/60	3739	16	JCB	JPM
ISSUE ITEM	CHANGED FROM	DATE	CN. NO	DRAFTS	CHECKER	ENG. APP.
TOLERANCES		SCALE: 5-4-01-86(22-506-1)				
ALL OTHERS	DEC. DIM. ± FRAC. DIM. ± ANGULAR DIM. ±	DRILL PUNCH COMMERCIAL STOCK SIZES AND MANUFACTURERS TOLERANCES ARE NOT INCLUDED.				

NOTICE TO PERSONS RECEIVING THIS DRAWING  
 THE TECHNICAL MATERIEL CORPORATION claims proprietary right in the material disclosed herein. This drawing is issued in confidence for engineering information only and may not be reproduced or used to manufacture anything shown hereon without permission from THE TECHNICAL MATERIEL CORPORATION to the user. This drawing is issued for mutual assistance and is subject to recall at any time.

1	PTE			1-4-60
REQ PER UNIT	MODEL	PROJECT NO.	ASSY. NO.	DATE
USED ON				

REQ. ITEM	PART NO.	DESCRIPTION	SYMBOL
STOCK SIZE			
MATERIAL			
WEIGHT PER PC.			
TYPE & TEMPER			
HEAT TREAT. SPEC.			
FINISH & SPEC. NO.			

THE TECHNICAL MATERIEL CORP.  
 MAMARONECK, NEW YORK  
 TRANSFORMER, VOLTAGE  
 REGULATOR

DRAWN: JCB  
 ELEC. DES. APP: JCB  
 MECH. DES. APP: JCB  
 CHECKED: JCB  
 FINAL APPROVAL: JCB

TF-209 C

TF-209 C