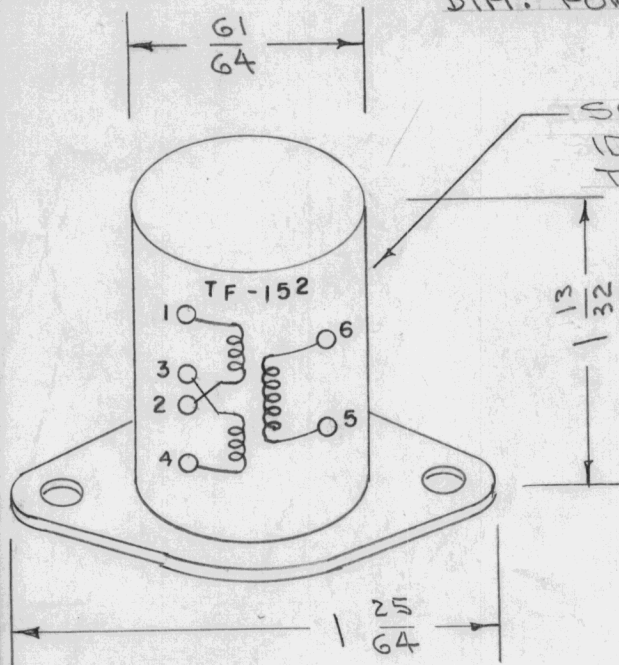


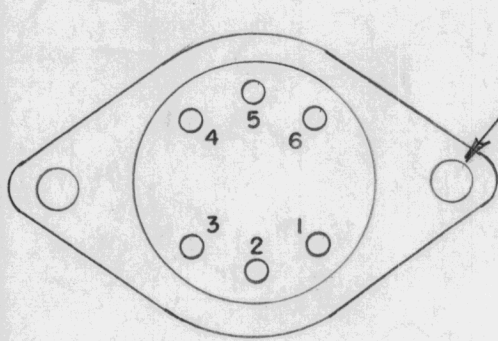
DIM. FOR REF. ONLY

REQ. PER UNIT	USED ON			TF-152	B
	MODEL	ASS'Y. NO.	DATE		

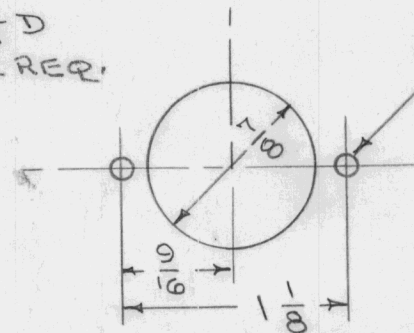
STANDARD DRAWING



RECOMMENDED APPLICATION - 82/41:1 INPUT TO GRID.
 MILITARY TYPE - TFARXIOYY
 PRI. IMP. OHMS - 150/600 SPLIT
 SEC. IMP. OHMS - 1 MEG
 D.C. IN PRI. MA - 0
 RESPONSE ± 4 db - 200 - 8,000 CPS
 MAX. LEVEL dbm - +10
 CASE: HERMETICALLY SEALED
 FINISH: SMOOTH GRAY ENAMEL
 MIL REF: MIL-T-27 (*)



$\frac{1}{8}$ D
2 REQ.



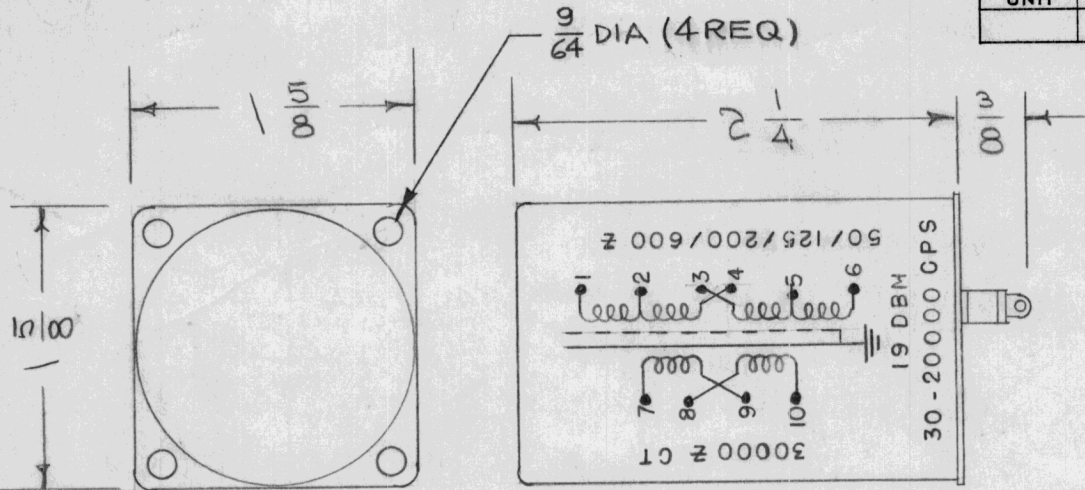
$\frac{1}{8}$ (.125) D. 2 REQ.

REF: UNITED TRANSFORMER CO.
 TYPE H-9 CASE TYPE RC25

REQ.	ITEM	PART NO.	DESCRIPTION				SYMBOL
			THE TECHNICAL MATERIEL CORP. MAMARONECK, NEW YORK				
			TRANSFORMER, AUDIO				
B			STAMPING NOTE REV SPEC CLARIFIED				
A	2		REDRAWN				
	1		SCHEMATIC ADDED				
ISSUE	ITEM	CHANGED FROM	DATE	CH. NO.	DRAFTS	CHECKER	ENG. APP.
TOLERANCES			SCALE: S401-29				
DEC. DIM. \pm			MAXIMUM ALLOWABLE TOLERANCES HAVE BEEN DETERMINED AND ANY DEVIATIONS WILL BE CAUSE FOR REJECTION. REMOVE ALL BURRS AND SHARP EDGES				
FRAC. DIM. \pm							
ANGULAR DIM. \pm							
TYPE & TEMPER		HEAT TREAT. SPEC.	DRAWN	CHECKED	FINAL APPROVAL		
FINISH & SPEC. NO.		ELEC. DES. APP.	MECH. DES. APP.	TF-152			

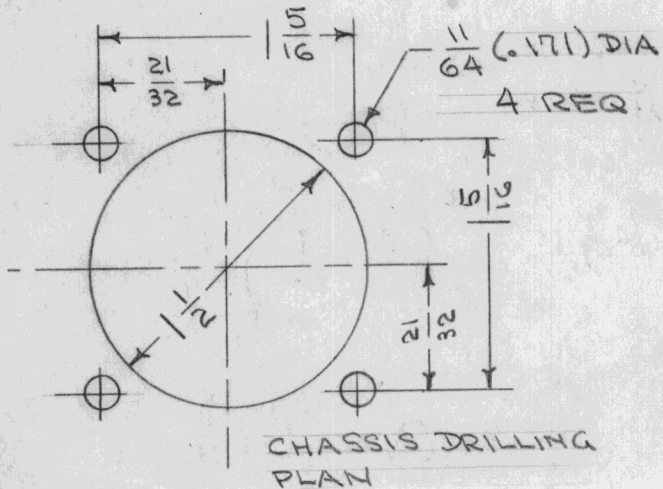
C

REQ. PER UNIT	USED ON			TF-154	C
	MODEL	ASS'Y. NO.	DATE		



* 200 Ω TERMINATION CAN BE USED FOR 150 Ω OR 250 Ω, 125/500 Ω TERMINATION FOR 150/600 Ω.

RECOMMENDED APPLICATION = P.P. PLATES TO MULTIPLE LINE

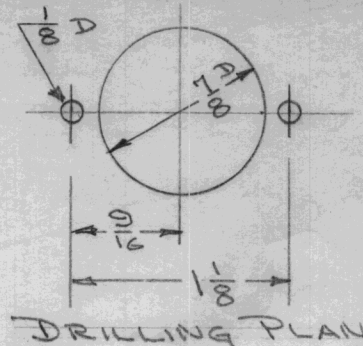
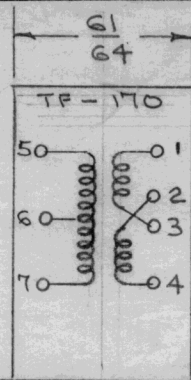


PRIMARY			SECONDARY		
OHMS IMPEDANCE	CONNECT TO	JOIN	OHMS IMPEDANCE	CONNECT TO	JOIN
30,000 SPLIT	7 & 10 PLATES	8 & 9 C.T.	50	2 & 4	2 & 3, 4 & 5
			125	1 & 4	1 & 3, 4 & 6
			200	2 & 5	3 & 4
			500*	1 & 6	3 & 4

D.C. IN PRI. MA - 8 BAL
 RESPONSE - ±2db (CYC) = 30-20,000
 MAX. LEVEL dbm = +19

REF. UNIT = TRANSFORMER CO.
 PART NO. H-23 CASE No. RC-50

ISSUE	ITEM	CHANGED FROM	DATE	CH. NO.	DRAFTS	CHECKER	ENG. APP.	REQ. ITEM	PART NO.	DESCRIPTION	SYMBOL		
C	1	DIM. 9/64 DIA (4 REQ) ADDED	12.2.64	13038	hcb	[Signature]	[Signature]			THE TECHNICAL MATERIEL CORP. MAMARONECK. NEW YORK	C		
B	1	Note added	2/3/59	741	J.C.B.	[Signature]	[Signature]						
A	2	SCHEMATIC ADDED	5/25/56	1	[Signature]	[Signature]	A.J.J.						
	1	TERM. PLAN								TRANSFORMER, AUDIO			
TOLERANCES								MATERIAL					
DEC. DIM. ±			SCALE: S401-29					TYPE & TEMPER		HEAT TREAT. SPEC.	DRAWN	CHECKED	FINAL APPROVAL
FRAC. DIM. ±			MAXIMUM ALLOWABLE TOLERANCES HAVE BEEN DETERMINED AND ANY DEVIATIONS WILL BE CAUSE FOR REJECTION. REMOVE ALL BURRS AND SHARP EDGES					TF1A13YY					TF-154
ANGULAR DIM. ±								MILITARY TYPE		ELEC. DES. APP.	MECH. DES. APP.		



REQ. PER UNIT	USED ON		
	MODEL	ASS'Y. NO.	DATE
2	SBE-1		6-10-57
2	SBE-2		5-5-58
2	SBE-3	AX-205	12-2-59

TF-170

B

RECOMMENDED APPLICATION: MIXING AND MATCHING

Military Type: TF4RX16YY

Primary Impedance ohms: 150/600

Secondary Impedance ohms: 600 CT

DC in Primary MA. = 0

Response \pm 2 db (CYC): 50 - 10,000

Maximum Level dbm: + 8

Ratio of turns overall primary to overall secondary 1-1

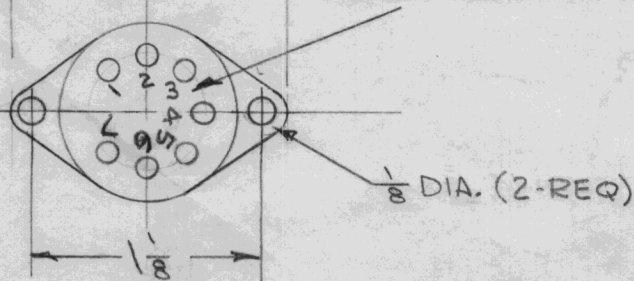
Terminals: 7 Solder lug type

Case: Hermetically sealed

Finish: Smooth gray enamel (TMC Specification S-115)

NOTE
TRANSFORMER NO. AND
SCHEMATIC TO BE STAMPED
ON SIDE OF CAN AS SHOWN.

Metal Stamp
Terminals AS SHOWN

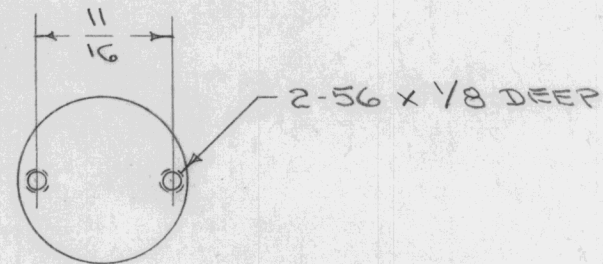
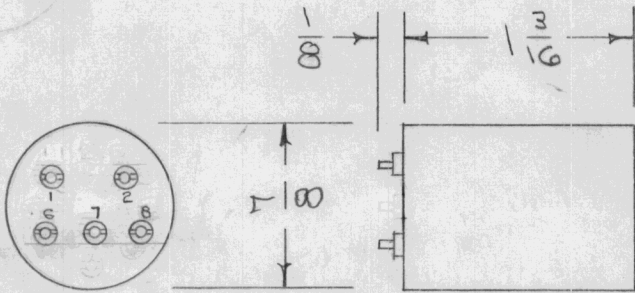
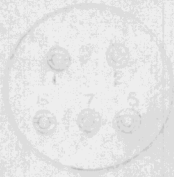


WINDING	IMPEDANCE (OHMS)	CONNECT TO	JOIN
PRIMARY	600	1 & 4	2 & 3, C.T.
	150	1 & 4	3 & 4, 1 & 2
SECONDARY	600	5 & 7	6 C.T.

Ref: United Transformer Supply H878 Case RC25

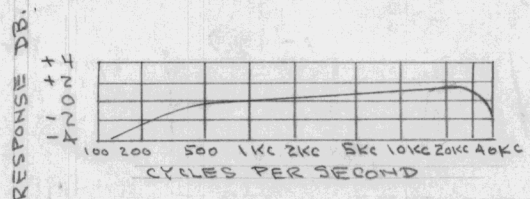
REQ.	ITEM	PART NO.	DESCRIPTION	SYMBOL										
			THE TECHNICAL MATERIEL CORP. MAMARONECK, NEW YORK											
B	1	ON PICTORIAL, (2) 1/8 DIA HOLES WERE 1/8 x 5/32 SLOTS	3-7-63 8447											
A	1	TF4RX16YY WAS TFA16YY	7/27/60 3089											
ISSUE	ITEM	CHANGED FROM	DATE	CH. NO.	DRAFTS	CHECKER	ENG. APP.	MATERIAL	TYPE & TEMPER	HEAT TREAT. SPEC.	DRAWN	CHECKED	FINAL APPROVAL	
TOLERANCES			SCALE: S401-29											
DEC. DIM. \pm FRAC. DIM. \pm ANGULAR DIM. \pm			MAXIMUM ALLOWABLE TOLERANCES HAVE BEEN DETERMINED AND ANY DEVIATIONS WILL BE CAUSE FOR REJECTION. REMOVE ALL BURRS AND SHARP EDGES											
FINISH & SPEC. NO.										ELEC. DES. APP.		MECH. DES. APP.		TF-170

REQ. PER UNIT	USED ON			TF-167	A
	MODEL	ASS'Y. NO.	DATE		
1	TRU		6-8-56		



SUGGESTED APPLICATION - SINGLE PLATE TO TWO GRIDS
 D.C. IN PRIMARY.
 PRIMARY IMPEDANCE 15,000
 SECONDARY " 95,000
 CASE SIZE 0-7

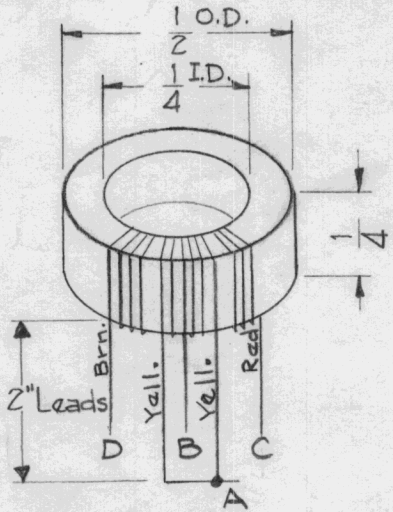
WINDING	IMPEDANCE	CONNECT TO	JOIN
PRIMARY	No. 1 TO PLATE	1 & 2	
SECONDARY	TWO GRIDS	6 & 8	7 - C.T.



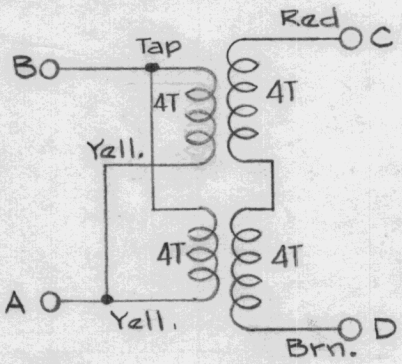
REF: UNITED TRANSFORMER CO. 0-7

REQ.	ITEM	PART NO.	DESCRIPTION				SYMBOL
			THE TECHNICAL MATERIEL CORP. MAMARONECK, NEW YORK				
			STOCK SIZE				
A	1		TRANSFORMER, AUDIO				
			MATERIAL				
ISSUE	ITEM	CHANGED FROM	DATE	CH. NO.	DRAFTS	CHECKER	ENG. APP.
			3-20-57	1	SC.	JAD	AJT
TOLERANCES			SCALE: 5401-29 (07)				
DEC. DIM. ±			MAXIMUM ALLOWABLE TOLERANCES HAVE BEEN DETERMINED AND ANY DEVIATIONS WILL BE CAUSE FOR REJECTION. REMOVE ALL BURRS AND SHARP EDGES				
FRAC. DIM. ±							
ANGULAR DIM. ±							
TYPE & TEMPER		HEAT TREAT. SPEC.	DRAWN	CHECKED	FINAL APPROVAL		
					TF-167 A		
FINISH & SPEC. NO.			ELEC. DES. APP.	MECH. DES. APP.			

REQ. PER. UNIT	USED ON			TF-172	D
	MODEL	ASS'Y. NO.	DATE		
1	SBE-1#2	A-1454	8-14-57		
1	SBE-3 AX-204	A-1454			



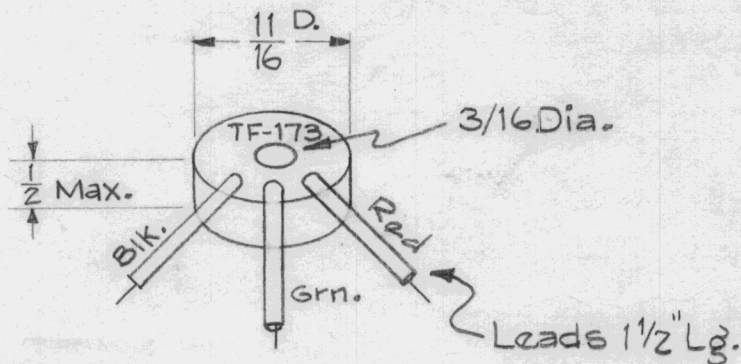
Wire - #30 Magnet Wire
Winding A-B - 8 turns total
Winding C-D - 8 turns total
Core - Toroidal (Ferrox Cube)



							REQ. ITEM	PART NO.	DESCRIPTION			SYMBOL		
							STOCK SIZE			THE TECHNICAL MATERIEL CORP. MAMARONECK, NEW YORK				
							MATERIAL			TRANSFORMER, HF, MOD.				
D	1	Drawing simplified No change	12/1/59	1644	<i>[Signature]</i>	16	<i>[Signature]</i>	16	<i>[Signature]</i>					
ISSUE	ITEM	CHANGED FROM	DATE	CH. NO.	DRAFTS	CHECKER	ENG. APP.							
TOLERANCES			SCALE: NO SPL 1A 1811						DRAWN	CHECKED	FINAL APPROVAL			
DEC. DIM. ±			MAXIMUM ALLOWABLE TOLERANCES HAVE BEEN DETERMINED AND ANY DEVIATIONS WILL BE CAUSE FOR REJECTION. REMOVE ALL BURRS AND SHARP EDGES				TYPE & TEMPER	HEATTREAT. SPEC.			TF-172			
FRAC. DIM. ±							FINISH & SPEC. NO.		ELEC. DES. APP	MECH. DES. APP			D	
ANGULAR DIM. ±														

REQ. PER. UNIT	USED ON		
	MODEL	ASS'Y. NO.	DATE
1	A-1396	T123	9-19-57
1	A-1516	T123	3-27-57
1	AO-101	AO-102	

TF-173 B



— ELECTRICAL SPECIFICATIONS —

Total Turns - 8

— MECHANICAL SPECIFICATIONS —

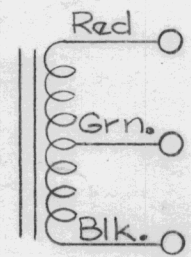
CORE ~ Toroidal
 WIRE ~ #30 Magnet
 Potted in Plastic Compound

NOTICE TO PERSONS RECEIVING THIS DRAWING

THE TECHNICAL MATERIEL CORPORATION claims proprietary right in the material disclosed hereon. This drawing is issued in confidence for engineering information only and may not be reproduced or used to manufacture anything shown hereon without permission from THE TECHNICAL MATERIEL CORPORATION to the user. This drawing is loaned for mutual assistance and is subject to recall at any time.

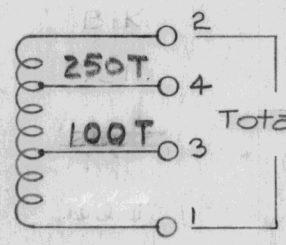
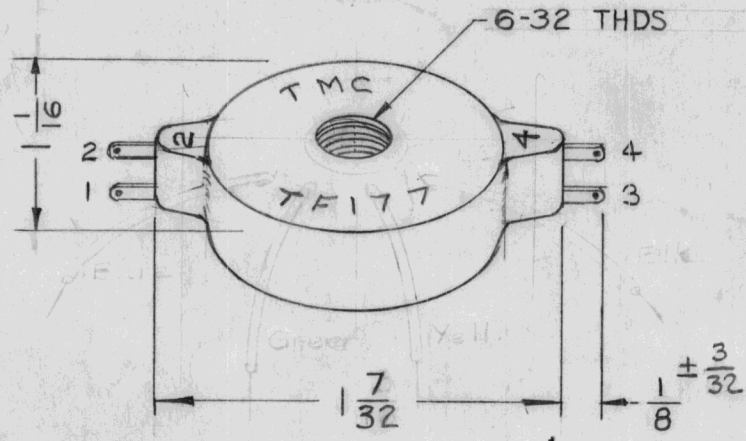
Property of:

THE TECHNICAL MATERIEL CORPORATION
 MAMARONECK, NEW YORK



REQ.	ITEM	PART NO.	DESCRIPTION				SYMBOL		
			THE TECHNICAL MATERIEL CORP.						
			MAMARONECK, NEW YORK						
			TRANSFORMER, HF, OSC. OUTPUT						
B	1		Redrawn NO ELECT. CHANGE	12/7/59	1644	AM	WG	AM	
ISSUE ITEM CHANGED FROM			DATE	CH. NO.	DRAFTS	CHECKER	ENG. APP.		
TOLERANCES			SCALE:	NO NPL		1A1812			
DEC. DIM. ± FRAC. DIM. ± ANGULAR DIM. ±			MAXIMUM ALLOWABLE TOLERANCES HAVE BEEN DETERMINED AND ANY DEVIATIONS WILL BE CAUSE FOR REJECTION. REMOVE ALL BURRS AND SHARP EDGES						
			TYPE & TEMPER		HEAT TREAT. SPEC.		DRAWN	CHECKED	FINAL APPROVAL
			FINISH & SPEC. NO.		ELEC. DES. APP		MECH. DES. APP		TF-173 B

REQ. PER UNIT	USED ON			TF-177	C
	MODEL	ASS'Y. NO.	DATE		
1	A-1381	T3	1-2-58		

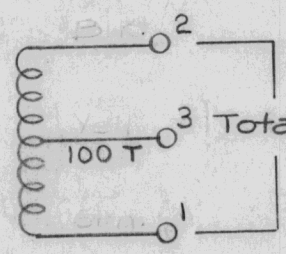
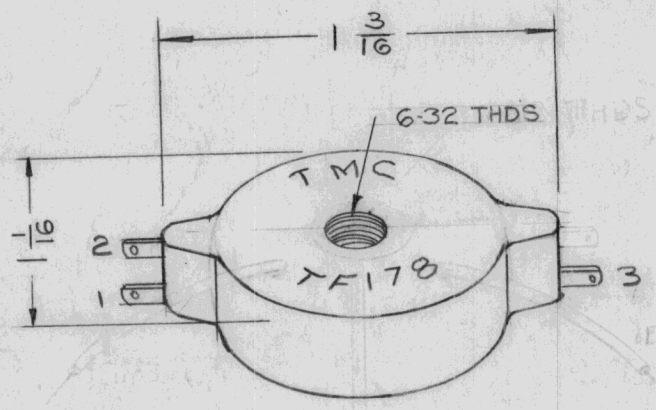


Total Inductance = 42.5 to 44.5 mhy.

Q = 20 OR GREATER
 RT = 9.5 TO 11.5 OHMS
 OUTSIDE DIA. - 1 7/32 D. MAX.
 HEIGHT - 1/2 IN.
 UNIT ENCAPSULATED IN PLASTIC

ISSUE	ITEM	CHANGED FROM	DATE	CH. NO.	DRAFTS	CHECKER	ENG. APP.	REQ. ITEM	PART NO.	DESCRIPTION	SYMBOL	
C	1	DIM. 1/8 ± 3/32 WAS 1/8 ± 1/16	8.11.64	11263	ASB	MP				THE TECHNICAL MATERIEL CORP. MAMARONECK, NEW YORK		
B	2	ADDED ± 1/16 TOLERANCE TO 1/8 DIM	3-18-63	8544	RC	JMB			STOCK SIZE			
B	1	1 7/32 DIM. WAS 1 3/16								TRANSFORMER, A. F.		
A	1	COMPLETE PHYSICAL CHANGE	7-26-60	2642	WJ	JCB				(T3)		
TOLERANCES								SCALE: 2A-1382		16 1/2/58	HALE	ATT
DEC. DIM. ±			MAXIMUM ALLOWABLE TOLERANCES HAVE BEEN DETERMINED AND ANY DEVIATIONS WILL BE CAUSE FOR REJECTION.					TYPE & TEMPER	HEAT TREAT. SPEC.	DRAWN	CHECKED	FINAL APPROVAL
FRAC. DIM. ± 1/64			REMOVE ALL BURRS AND SHARP EDGES					"		PLK.		TF-177
ANGULAR DIM. ±								FINISH & SPEC. NO.		ELEC. DES. APP.	MECH. DES. APP.	C

REQ. PER UNIT	USED ON			TF-178	A
	MODEL	ASS'Y. NO.	DATE		
1	A-1384		1-2-58		

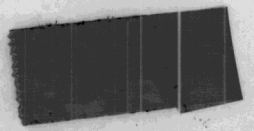


ELECTRICAL SPEC.

- LT - 42.5 TO 44.5 MH
- Q = 20 OR GREATER
- RT - 9.5 TO 11.5 OHMS
- OUTSIDE DIA. 1 3/16 IN. D. MAX.
- HEIGHT - 1/2 IN.
- UNIT ENCAPSULATED IN PLASTIC

Lead Lengths - 1/2 in.
 Outside Diam. - Approx 1 1/4
 Inside Diam. - Approx 5/16
 Height - Approx 1/2
 Potted in Max. Compound

REQ.	ITEM	PART NO.	DESCRIPTION				SYMBOL	
		//	THE TECHNICAL MATERIEL CORP. MAMARONECK. NEW YORK					
		STOCK SIZE	TRANSFORMER, A.F.					
		//						
		MATERIAL						
A	1	COMPLETE PHYSICAL CHANGE	7-26-60	2643	cy	JCB	AMP	
ISSUE	ITEM	CHANGED FROM	DATE	CH. NO.	DRAFTS	CHECKER	ENG. APP.	
TOLERANCES			SCALE: 2A-1383					
DEC. DIM. ±		A	MAXIMUM ALLOWABLE TOLERANCES HAVE BEEN DETERMINED AND ANY DEVIATIONS WILL BE CAUSE FOR REJECTION. REMOVE ALL BURRS AND SHARP EDGES					
FRAC. DIM. ±								
ANGULAR DIM. ±								
			TYPE & TEMPER		HEAT TREAT. SPEC.	DRAWN	CHECKED	FINAL APPROVAL
						PLK.		TF-178
			FINISH & SPEC. NO.		ELEC. DES. APP.	MECH. DES. APP.		A

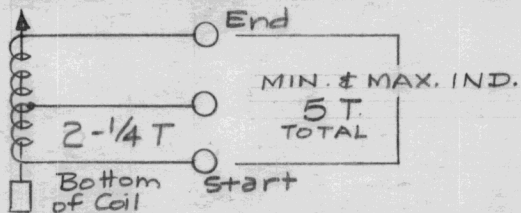


PROCEDURE

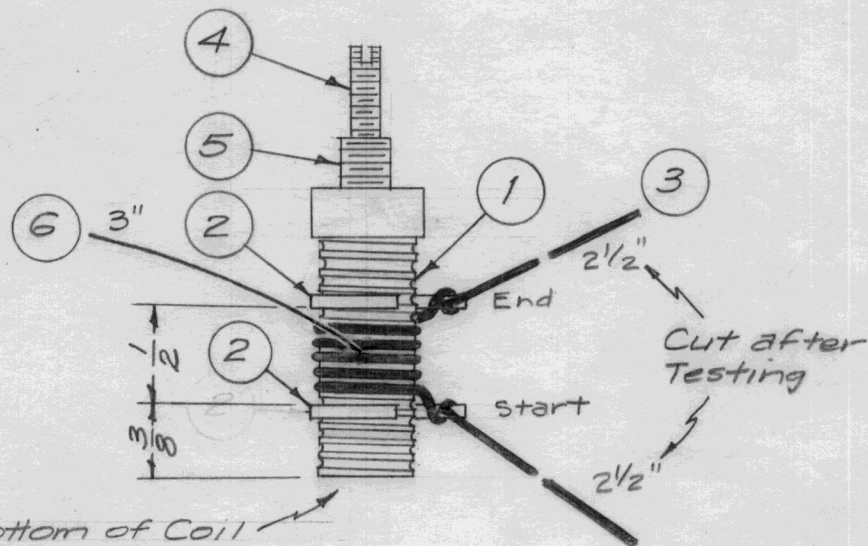
1. Secure Terminals (item 2) and bushing (item 5) to coil form (item 1) with insulex (item 7). Do not allow insulex to form on terminal tips.
2. Bake for 2 hours at 250° F.
3. Wind 5 turns of wire (item 3) on coil form starting from bottom in a CCW direction.
4. Twist and solder wire ends to terminals as shown, leaving 2-1/2" of wire extending from terminals for testing purposes. (Cut these leads after testing flush with term.)
5. Solder tap wire (item 6) to coil at 2-1/4 turns from bottom. (3" Long)
6. Coat Winding with Insulex (item 7).
7. Bake unit for 2 hours at 250° F.
8. Test unit as per below. (Use Boonton Q Meter Model 160A or Equiv.)
9. Cut leads indicated after testing.

TEST DATA (with Core)

Inductance - MIN. must be less than .36μhy
 MAX. must be more than .48μhy
 Min. & Max. "L" accomplished by adjusting core.
Test Freq. - 25 Mc.
Q at 25 Mc - Greater than 130.



REQ. PER UNIT	USED ON			TF-185	B
	MODEL	ASS'Y. NO.	DATE		
1	RFA-1	T207	6-22-58		



X	8	BS-100	Solder, Soft	
X	7	GL-104-2	Insulex, U-85	
3"	6	WL-100-6	Wire, BUSS #20	
1	5	SM-142	Bushing, Coil Form	
1	4	CI-109-19	Core, Tuning	
X	3	WL-100-4	Wire, BUSS #16	
2	2	TE-153-3	Terminal, Ring Type	
1	1	CF-124-1.43	Coil Form, Threaded	

B	1	In Schematic, 2-1/4 T WAS 3 1/4 T (Error)	6/26/58	399	16	JOP	
A	1	ITEM 4 WAS CI-109-8	5/24/58	1	16	OUT AJT	

TOLERANCES		SCALE:	
DEC. DIM. ±	A	MAXIMUM ALLOWABLE TOLERANCES HAVE BEEN DETERMINED AND ANY DEVIATIONS WILL BE CAUSE FOR REJECTION.	
FRAC. DIM. ±		REMOVE ALL BURRS AND SHARP EDGES	
ANGULAR DIM. ±			

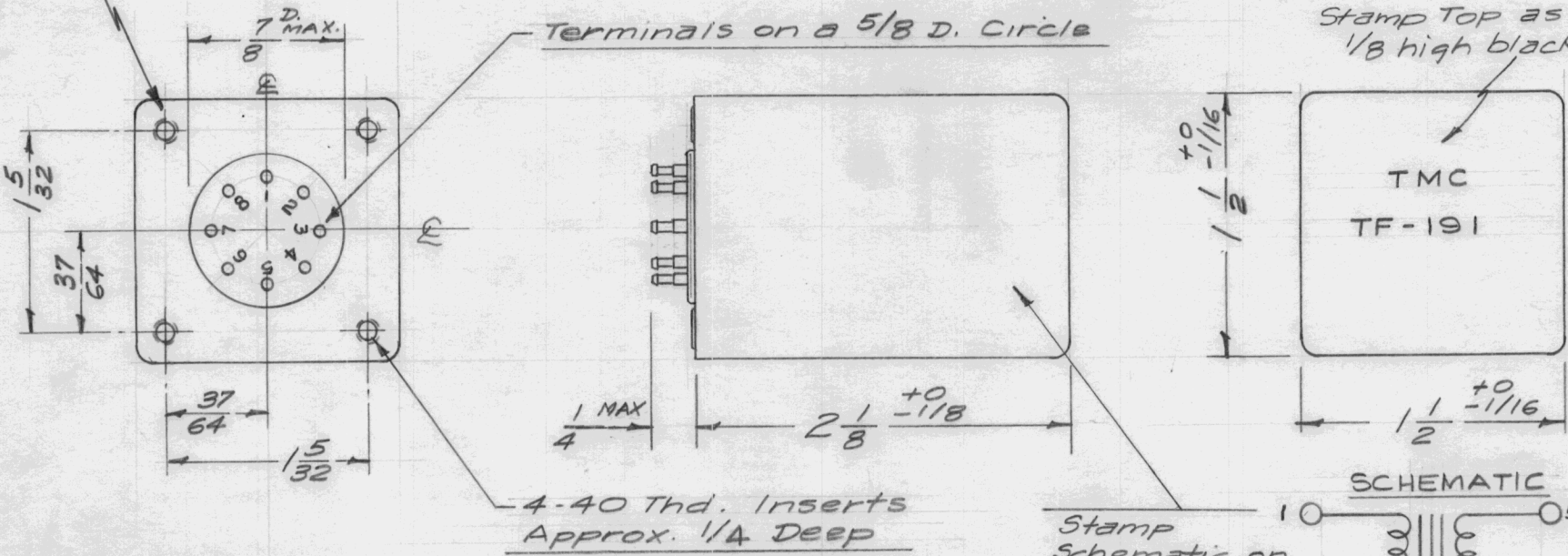
REQ. ITEM	PART NO.	DESCRIPTION	SYMBOL
THE TECHNICAL MATERIEL CORP. MAMARONECK. NEW YORK			
STOCK SIZE			
TRANSFORMER, RF, TUNED, 16-32 Mc. (T207)			
MATERIAL			
		16 5/22/58	A.J.J.
TYPE & TEMPER		HEAT TREAT. SPEC.	DRAWN
			CHECKED
FINISH & SPEC. NO.		ELEC. DES. APP.	MECH. DES. APP.
			TF-185 B

REQ. PER UNIT	USED ON			TF-191	A
	MODEL	ASS'Y. NO.	DATE		
2	A-1532/PVC		7-29-58		

Ground Shield to Insert Inside Can

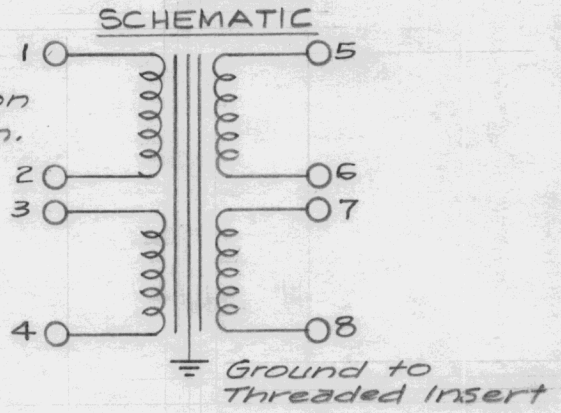
Terminals on a 5/8 D. Circle

Stamp TOP as Shown
1/8 high black Gothic



IMPEDANCE (OHMS)	PRIMARY CONNECTION		SECONDARY CONN.	
	CONNECT TO	JOIN	CONNECT TO	JOIN
500 (or 600)	1 & 4	2 & 3	5 & 8	6 & 7

Stamp Schematic on Side of Can. (Black)



RESPONSE - ± 2 db from 30 to 20,000 cps.

REF: BIRKSHIRE TRANSFORMER CO.

REQ. ITEM	PART NO.	DESCRIPTION	SYMBOL
		THE TECHNICAL MATERIEL CORP. MAMARONECK. NEW YORK	
		TRANSFORMER, AUDIO	
A 1	APPROX INSERT DEPTH WAS 1/2	3-27-62 6545 G.S.	<i>[Signature]</i>
ISSUE	ITEM	CHANGED FROM	DATE CH. NO. DRAFTS CHECKER ENG. APP.
TOLERANCES		SCALE: FULL	
DEC. DIM. \pm		MAXIMUM ALLOWABLE TOLERANCES HAVE BEEN DETERMINED AND ANY DEVIATIONS WILL BE CAUSE FOR REJECTION.	
FRAC. DIM. \pm 1/64		REMOVE ALL BURRS AND SHARP EDGES	
ANGULAR DIM. \pm		A	
TYPE & TEMPER		HEAT TREAT. SPEC.	DRAWN
FINISH & SPEC. NO.		ELEC. DES. APP.	MECH. DES. APP.
		16 7/29/58	<i>[Signature]</i>
		<i>[Signature]</i>	<i>[Signature]</i>
		TF-191	A