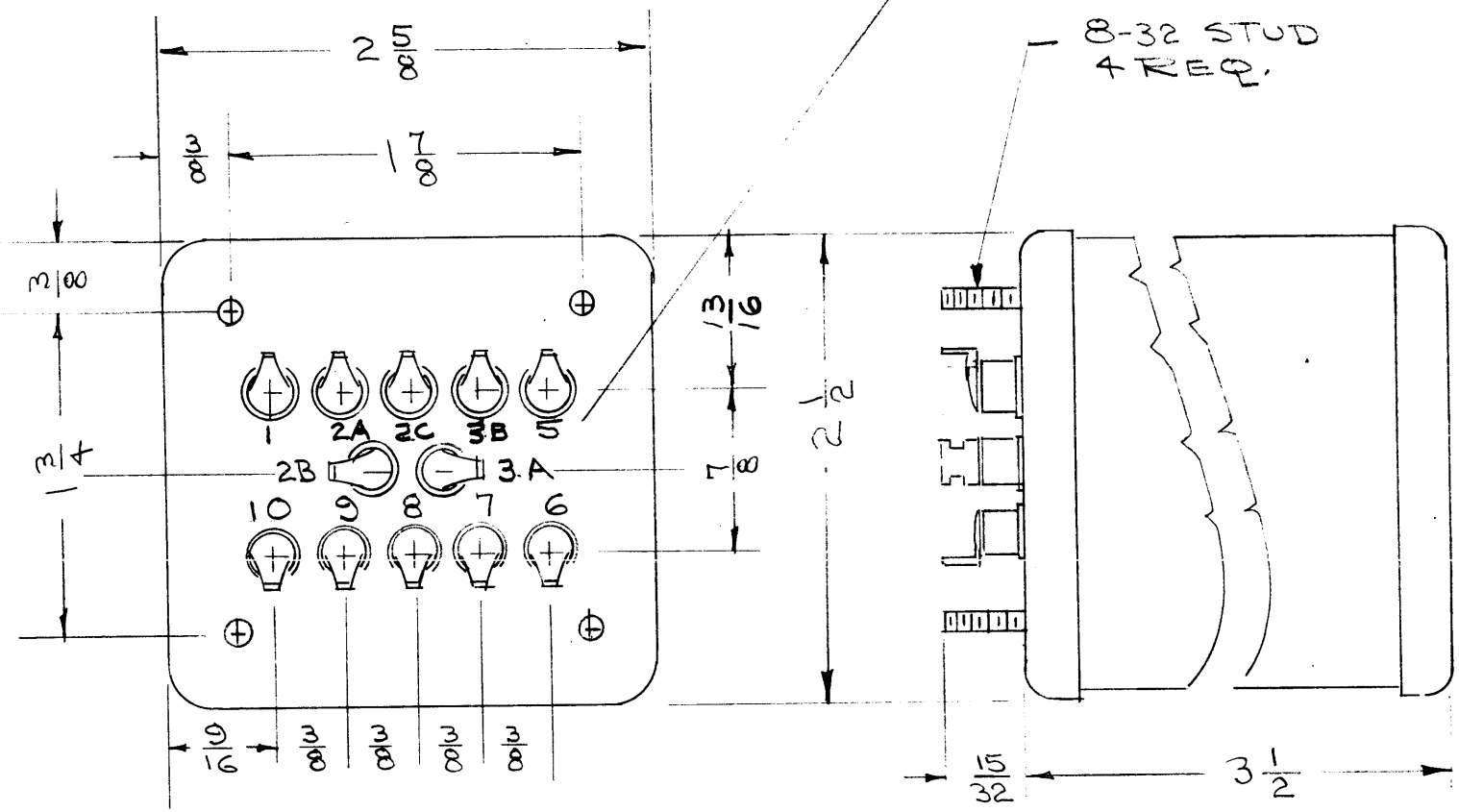


TF-194

STAMP TERMINAL NOS.
AS SHOWN, 1/8 HIGH
LETTERING.

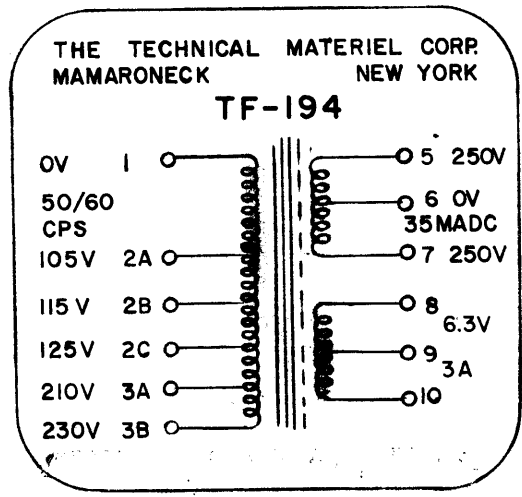


A. ELECTRICAL SPECIFICATIONS:

PRIMARY: 105V, 115V, 125V, 210V, 230V, 50/60 CPS, Single Phas
 SECONDARY: #1. 250-0-250 volts RMS, 35MA DC operating into a 4 MFD capacity input filter.
 SECONDARY: #2. 6.3 volts center tapped at 3 AMPS.
 INSULATION: All windings insulated for 1000 V
 HEAT RISE: Max. temperature Rise + 40° C.

B. MECHANICAL SPECIFICATIONS:

CASE: Hermetically sealed in rectangular metal can.
 FINISH: Smooth Dark Grey Enamel, Similar or Equal to Maas & Waldstein lot #68397, Navy Spec. 52El4, Type C, Gloss 35 to 40 units. (S-115)
 SIZE: 3 1/2 X 2 1/2 X 2-5/8
 Mounting Center: As shown
 TERMINALS: 3/8 long O/a solder type terminals and ceramic bushings, located on mounting end.
 LETTERING: Schematic Diagram, TMC Part Number (TF-194) Manufacturer's Name and part number shall appear on end opposite terminals



NOTE: MANUFACTURED IN ACCORDANCE WITH MIL SPEC T-27-A EXCEPT THAT MIL SPEC T-27-A SHALL NOT APPEAR ON CASE AND QUALIFICATION TESTING IS NOT REQUIRED.

NOTE:
STATIC SHIELD GROUNDED
TO LAMINATION

A	1	NOTE ADDED (MIL T-27-A)	6-29-60	2572				
ISSUE	ITEM	CHANGED FROM	DATE	CH. NO.	DRAFTS	CHECKER	ENG. APP.	
TOLERANCES			SCALE:					
DEC. DIM. ±	MAXIMUM ALLOWABLE TOLERANCES HAVE BEEN DETERMINED AND ANY DEVIATIONS WILL BE CAUSE FOR REJECTION.							
FRAC. DIM. ±	REMOVE ALL BURRS AND SHARP EDGES							
ANGULAR DIM. ±								

1	RSM-3			9/30/58
REQ. PER UNIT	MODEL	PROJECT NO.	ASS'Y. NO.	DATE
USED ON				

REQ. ITEM	PART NO.	DESCRIPTION	SYMBOL
		THE TECHNICAL MATERIEL CORP. MAMARONECK, NEW YORK	
STOCK SIZE		TRANSFORMER, POWER	
MATERIAL			
TYPE & TEMPER	HEAT TREAT. SPEC.	DRAWN	CHECKED
FINISH & SPEC. NO.	ELEC. DES. APP.	MECH. DES. APP.	