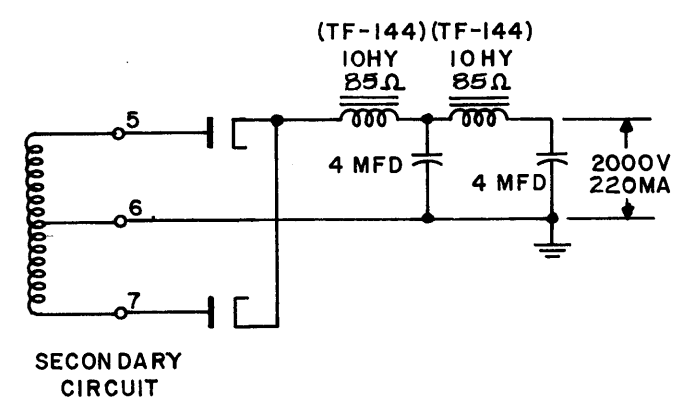
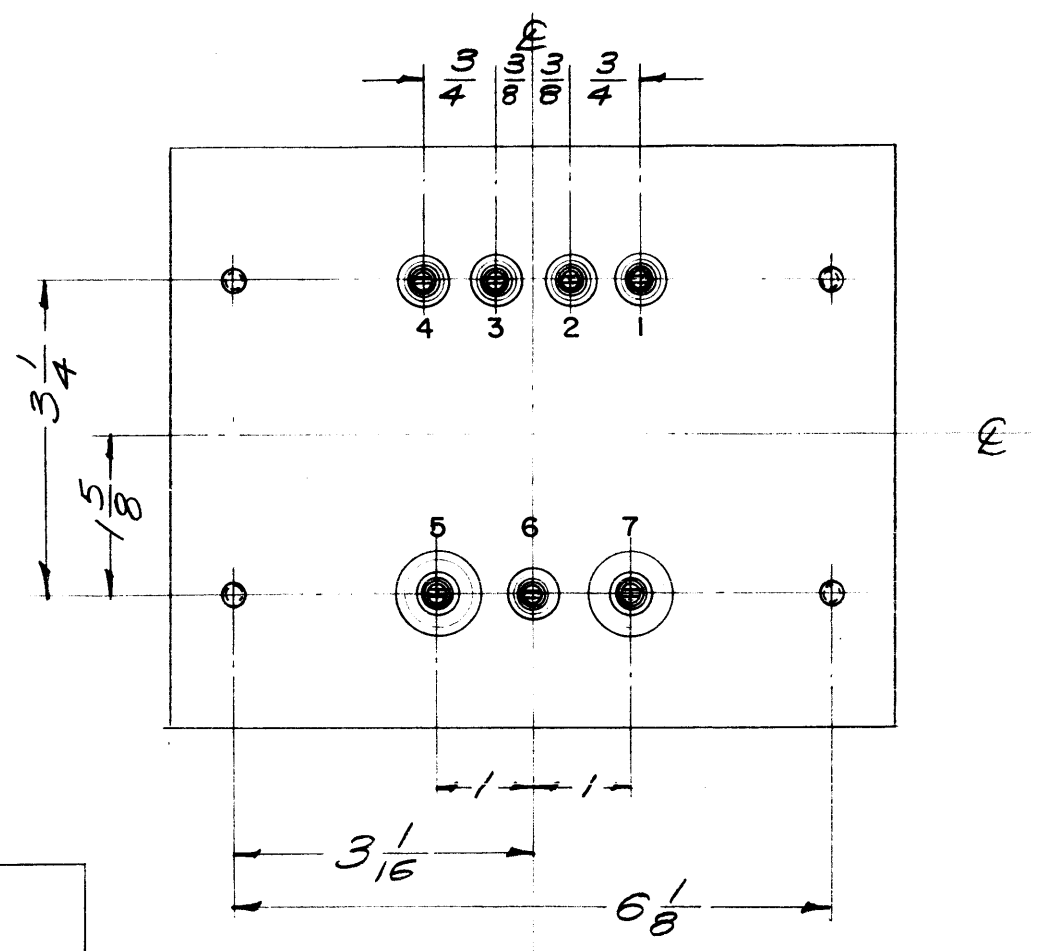
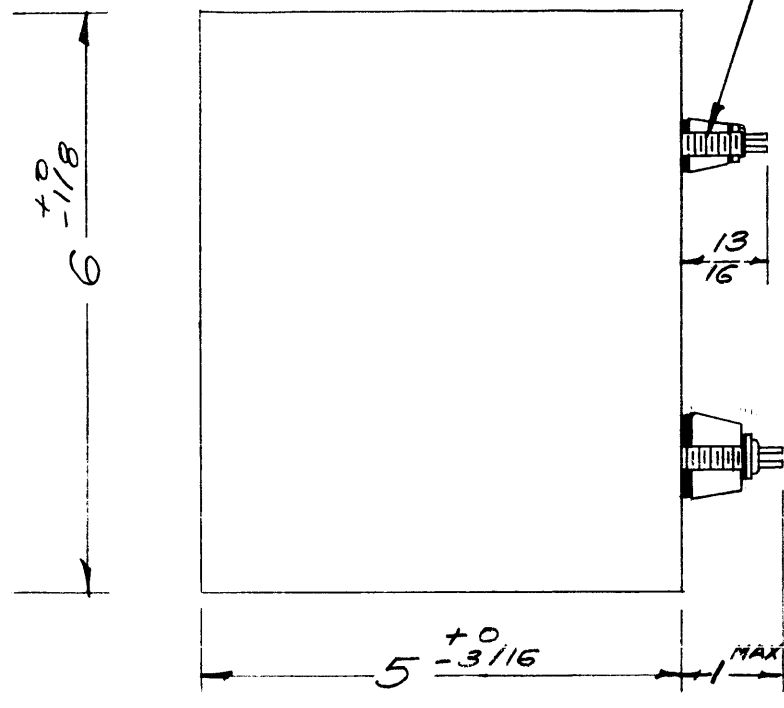
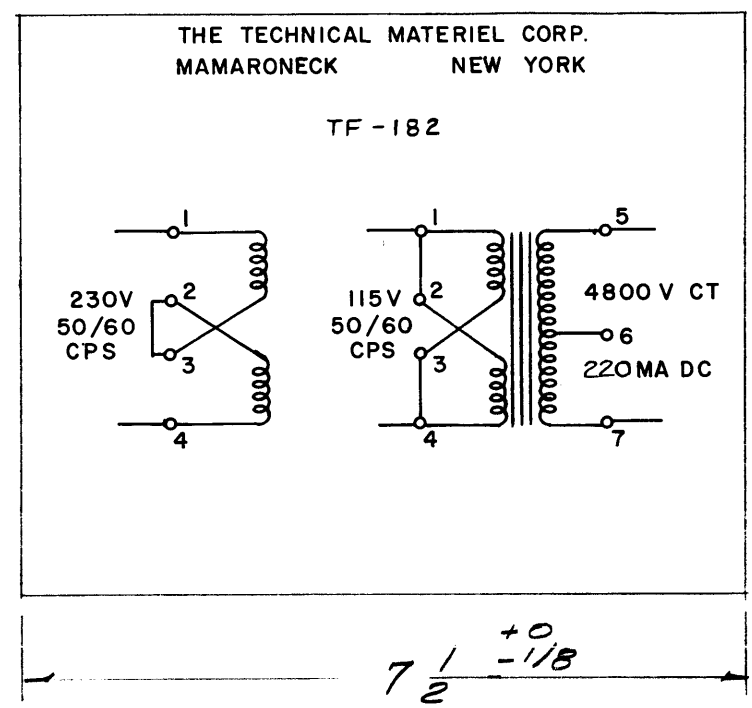


TF-182 A



ELECTRICAL SPECIFICATIONS:
PRIMARY- 115/230 VAC, 50/60 CPS, SINGLE PHASE.
SECONDARY- 4800 V. CT / 220 MA DC.

MECHANICAL SPECIFICATIONS:
CASE - RECTANGULAR, STEEL, MIL TYPE YY, HERMETICALLY SEALED.
FINISH - TMC SMOOTH GREY ENAMEL (S115), EXCEPT TERMINAL END.
SIZE - 6 X 7-1/2 X 5 HIGH, EXCLUDING STUDS AND TERMINALS.
STAMPING - TERMINALS SHALL BE METAL STAMPED 1-7 AS SHOWN. OPPOSITE END SHALL BE RUBBER STAMPED IN BLACK AS SHOWN.

NOTE: MANUFACTURED IN ACCORDANCE WITH MIL SPEC T-27-A EXCEPT THAT MIL SPEC T-27-A SHALL NOT APPEAR ON CASE AND QUALIFICATION TESTING IS NOT REQUIRED.

A	1	NOTE ADDED (MIL T-27-A)	6-29-60	2572	<i>[Signature]</i>	<i>[Signature]</i>	<i>[Signature]</i>
ISSUE	ITEM	CHANGED FROM	DATE	CH. NO.	DRAFTS	CHECKER	ENG. APP.
TOLERANCES			SCALE: 1/2				
DEC. DIM. ±		MAXIMUM ALLOWABLE TOLERANCES HAVE BEEN DETERMINED AND ANY DEVIATIONS WILL BE CAUSE FOR REJECTION. REMOVE ALL BURRS AND SHARP EDGES					
FRAC. DIM. ± 1/64							
ANGULAR DIM. ±							

REQ. PER UNIT	MODEL	PROJECT NO.	ASS'Y. NO.	DATE
USED ON				

REQ. ITEM	PART NO.	DESCRIPTION	SYMBOL
STOCK SIZE		THE TECHNICAL MATERIEL CORP. MAMARONECK, NEW YORK	
MATERIAL		TRANSFORMER, POWER, STEP-UP	
TYPE & TEMPER	HEAT TREAT. SPEC.	DRAWN	CHECKED
		16 7/11/58 <i>[Signature]</i>	<i>[Signature]</i>
FINISH & SPEC. NO.		ELEC. DES. APP.	MECH. DES. APP.
		TF-182	A