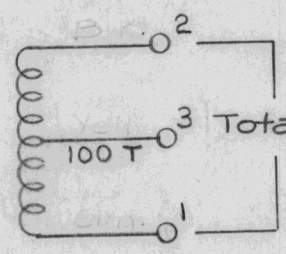
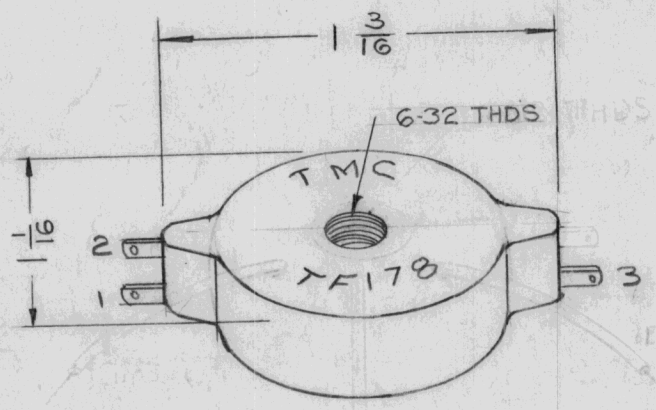


REQ. PER UNIT	USED ON			TF-178	A
	MODEL	ASS'Y. NO.	DATE		
1	A-1384		1-2-58		



**ELECTRICAL SPEC.**

- LT - 42.5 TO 44.5 MH
- Q = 20 OR GREATER
- RT - 9.5 TO 11.5 OHMS
- OUTSIDE DIA. 1 3/16 IN. D. MAX.
- HEIGHT - 1/2 IN.
- UNIT ENCAPSULATED IN PLASTIC

Lead Lengths - 1/2 in.  
 Outside Diam. - Approx 1 1/4  
 Inside Diam. - Approx 5/16  
 Height - Approx 1/2  
 Potted in Max. Compound

REQ.	ITEM	PART NO.	DESCRIPTION				SYMBOL	
		//	THE TECHNICAL MATERIEL CORP. MAMARONECK. NEW YORK					
		STOCK SIZE	TRANSFORMER, A.F.					
		//	(T4)					
		MATERIAL						
A	1	COMPLETE PHYSICAL CHANGE	7-26-60	2643	cy	JCB	AMP	
ISSUE	ITEM	CHANGED FROM	DATE	CH. NO.	DRAFTS	CHECKER	ENG. APP.	
TOLERANCES			SCALE: 2A-1383					
DEC. DIM. ±		A	MAXIMUM ALLOWABLE TOLERANCES HAVE BEEN DETERMINED AND ANY DEVIATIONS WILL BE CAUSE FOR REJECTION. REMOVE ALL BURRS AND SHARP EDGES					
FRAC. DIM. ±								
ANGULAR DIM. ±								
			TYPE & TEMPER		HEAT TREAT. SPEC.	DRAWN	CHECKED	FINAL APPROVAL
						PLK.		TF-178
			FINISH & SPEC. NO.		ELEC. DES. APP.	MECH. DES. APP.		A

