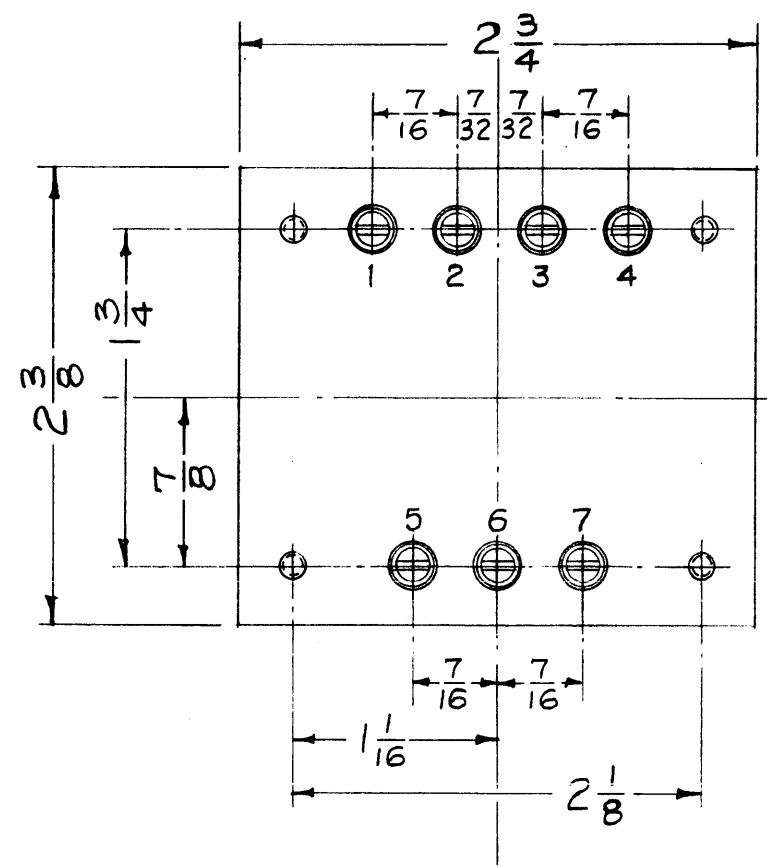


TF-176 B

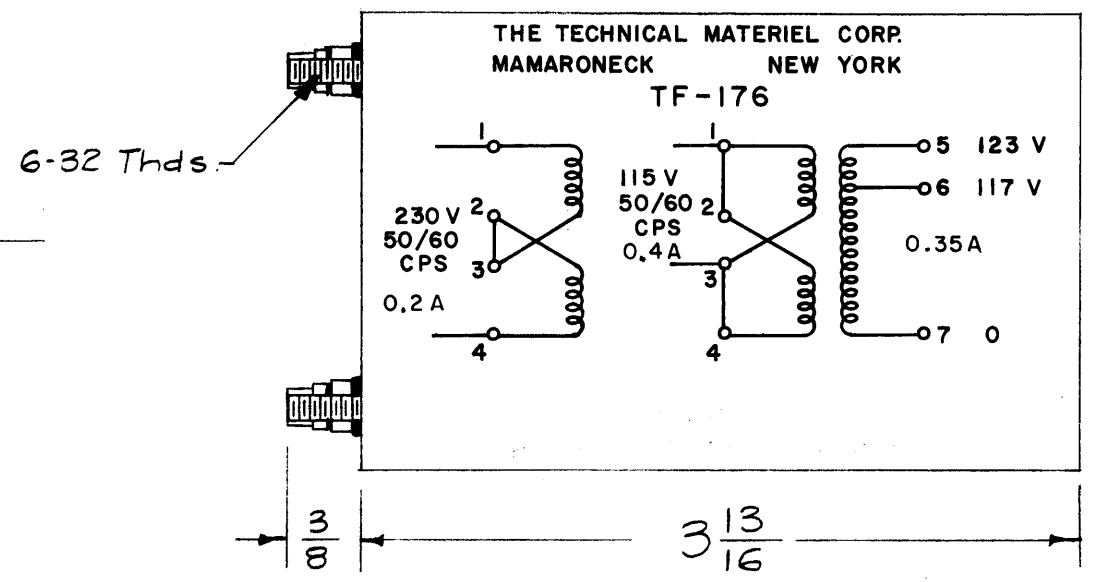
NOTICE TO PERSONS RECEIVING THIS DRAWING

THE TECHNICAL MATERIEL CORPORATION claims proprietary rights in the material disclosed herein. This drawing is to be used for manufacturing information only and may not be reproduced or used to manufacture anything shown hereon without permission from THE TECHNICAL MATERIEL CORPORATION to the user. This drawing is loaned for mutual assistance and is subject to recall at any time.

Property of:  
THE TECHNICAL MATERIEL CORPORATION  
MAMARONECK, NEW YORK



Stamp Case as Shown - Black Gothic



NOTE: MANUFACTURED IN ACCORDANCE WITH MIL SPEC T-27-A EXCEPT THAT MIL SPEC T-27-A SHALL NOT APPEAR ON CASE AND QUALIFICATION TESTING IS NOT REQUIRED.

**ELECTRICAL DATA**  
 PRIMARY — 115/230 V, 50/60 CPS.  
 SECONDARY — 117/123 V. RMS. 40 W. @ 117 V. or 42 W. @ 123 V.  
 INSULATION — Windings Insulated for 1000 V.  
 HEAT RISE — Max. 40° C. Rise.

**MECHANICAL DATA**  
 CASE — Hermetically Sealed in Rectangular Steel Case. MIL Type GA  
 FINISH — Smooth Grey Enamel (TMC Spec. S-115)  
 TERMINALS — 3/8" Long O/A. Solder Lug Terminals and Ceramic Bushings.

ISSUE	ITEM	CHANGED FROM	DATE	CH. NO.	DRAFTS	CHECKER	ENG. APP.
B	1	NOTE ADDED (MIL T-27-A)	6-29-60	2572			
A	1	AMPS ADDED TO STAMPING DIAGRAM	3/27/59				

TOLERANCES		SCALE: FULL	
DEC. DIM. ±		MAXIMUM ALLOWABLE TOLERANCES HAVE BEEN DETERMINED AND ANY DEVIATIONS WILL BE CAUSE FOR REJECTION. REMOVE ALL BURRS AND SHARP EDGES	
FRAC. DIM. ± 1/64	A		
ANGULAR DIM. ±			

1	ATS-MCU		12-20-57
REQ. PER UNIT	MODEL	PROJECT NO.	ASS'Y. NO.
USED ON			

REF-BTC # 3256

REQ. ITEM	PART NO.	DESCRIPTION	SYMBOL
✓		THE TECHNICAL MATERIEL CORP. MAMARONECK, NEW YORK	
✓		TRANSFORMER, POWER, STEP-UP	
✓			
✓		16 <sup>12/20/57</sup>	
TYPE & TEMPER	HEAT TREAT. SPEC.	DRAWN	CHECKED
✓			
FINISH & SPEC. NO.	ELEC. DES. APP.	MECH. DES. APP.	
			TF-176 B