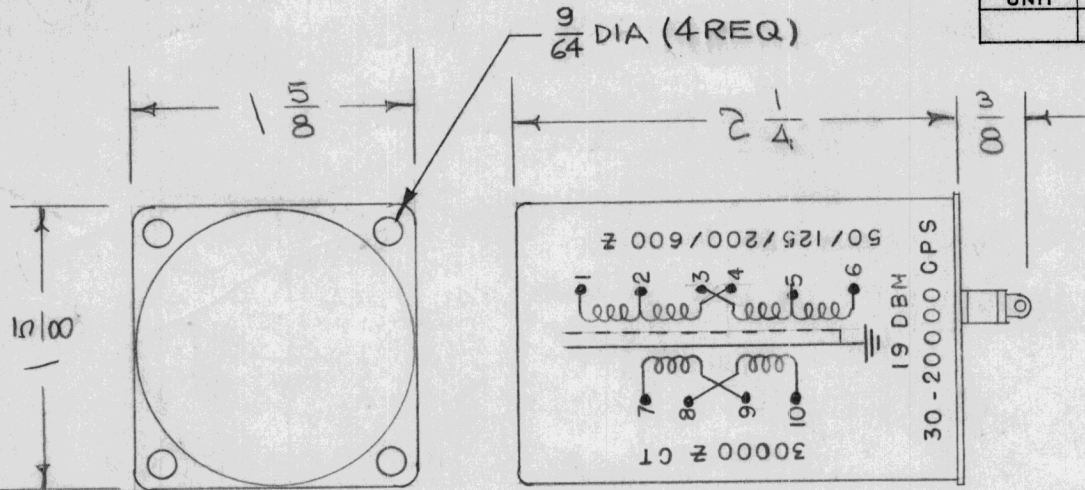
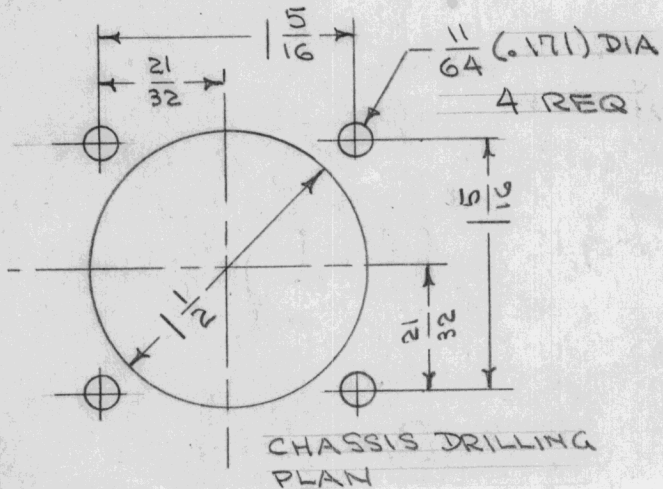


REQ. PER UNIT	USED ON			TF-154	C
	MODEL	ASS'Y. NO.	DATE		



* 200 Ω TERMINATION CAN BE USED FOR 150 Ω OR 250 Ω, 125/500 Ω TERMINATION FOR 150/600 Ω.

RECOMMENDED APPLICATION = P.P. PLATES TO MULTIPLE LINE



PRIMARY			SECONDARY		
OHMS IMPEDANCE	CONNECT TO	JOIN	OHMS IMPEDANCE	CONNECT TO	JOIN
30,000 SPLIT	7 & 10 PLATES	8 & 9 C.T.	50	2 & 4	2 & 3, 4 & 5
			125	1 & 4	1 & 3, 4 & 6
			200	2 & 5	3 & 4
			500*	1 & 6	3 & 4

D.C. IN PRI. MA - 8 BAL
 RESPONSE - ±2db (CYC) = 30-20,000
 MAX. LEVEL dbm = +19

REF. UNIT = TRANSFORMER CO.
 PART NO. H-23 CASE No. RC-50

ISSUE	ITEM	CHANGED FROM	DATE	CH. NO.	DRAFTS	CHECKER	ENG. APP.	REQ. ITEM	PART NO.	DESCRIPTION	SYMBOL						
C	1	DIM. 9/64 DIA (4 REQ) ADDED	12.2.64	13038	hcb	[Signature]	[Signature]			THE TECHNICAL MATERIEL CORP. MAMARONECK. NEW YORK	TRANSFORMER, AUDIO						
B	1	Note added	2/3/59	741	J.C.B.	[Signature]	[Signature]										
A	2	SCHEMATIC ADDED	5/25/56	1	[Signature]	[Signature]	[Signature]										
	1	TERM. PLAN															
TOLERANCES			SCALE: S401-29			CDD 9/25/56			[Signature]			[Signature]					
DEC. DIM. ±			MAXIMUM ALLOWABLE TOLERANCES HAVE BEEN DETERMINED AND ANY DEVIATIONS WILL BE CAUSE FOR REJECTION. REMOVE ALL BURRS AND SHARP EDGES			TYPE & TEMPER		HEAT TREAT. SPEC.		DRAWN		CHECKED		FINAL APPROVAL			
FRAC. DIM. ±						TF1A13YY		[Signature]		[Signature]		[Signature]		TF-154		C	
ANGULAR DIM. ±						MILITARY TYPE		ELEC. DES. APP.		MECH. DES. APP.							