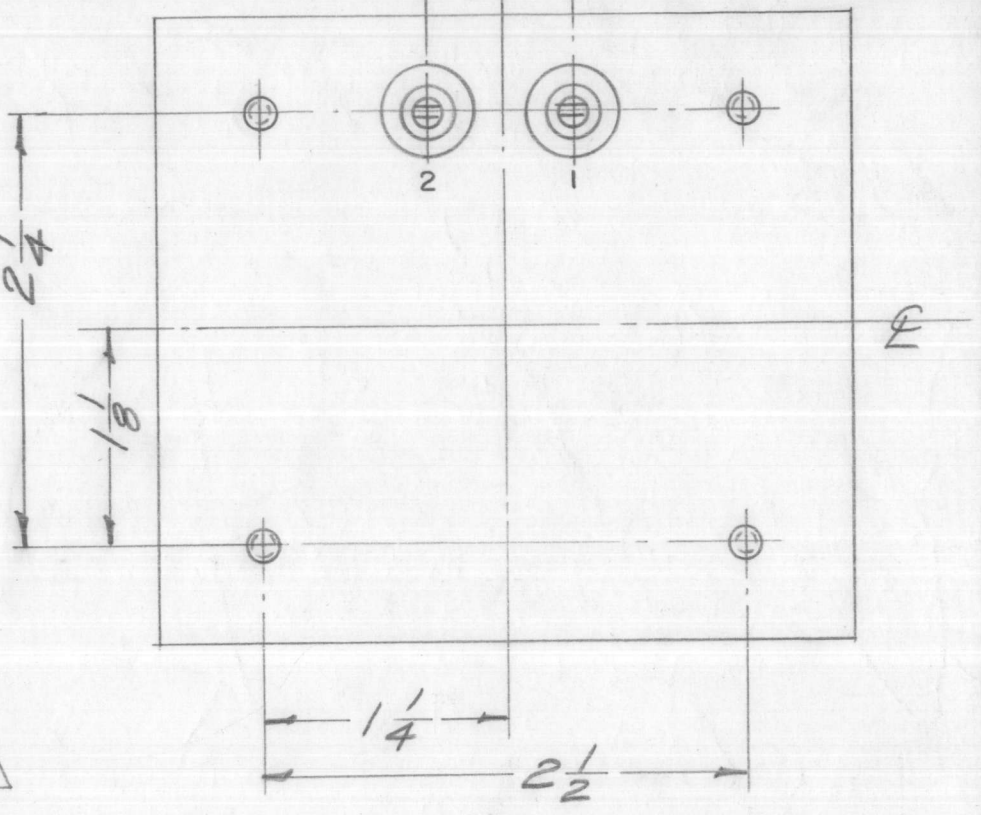
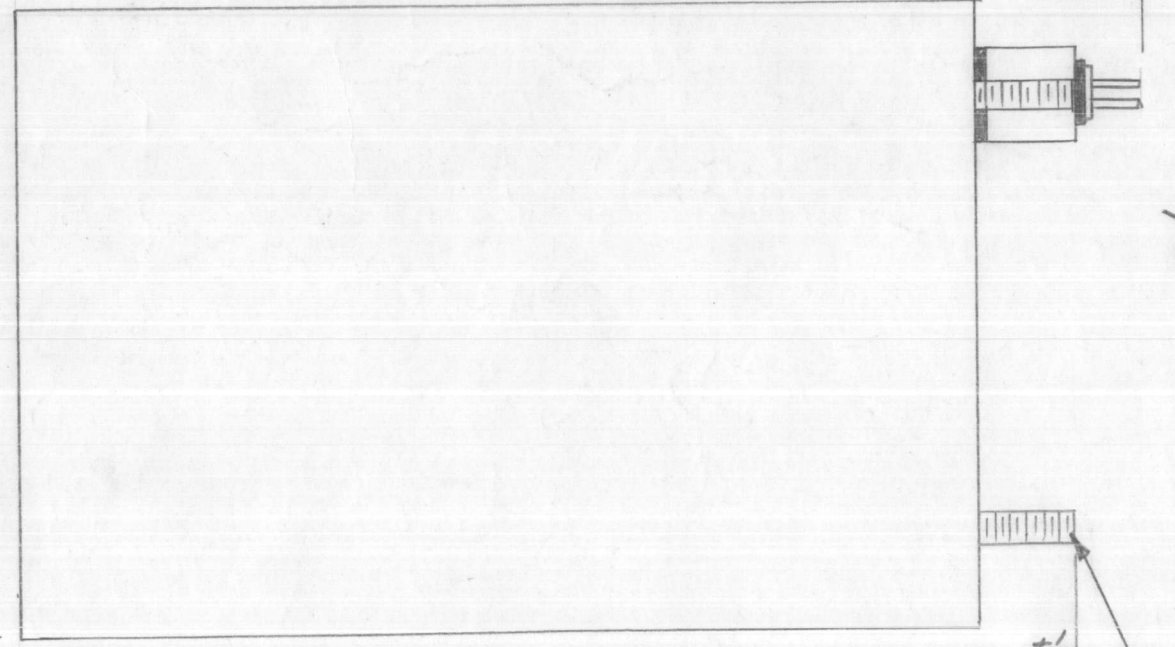
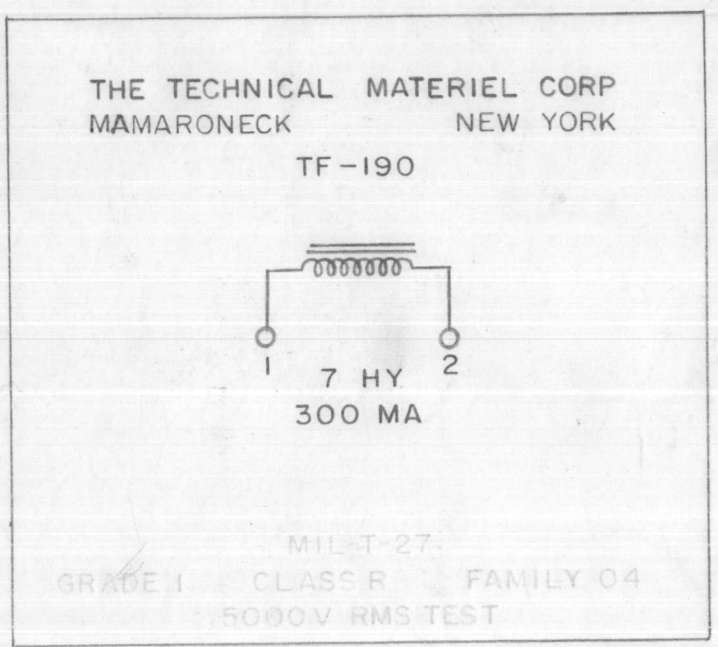


TF-190 B



ELECTRICAL SPECIFICATIONS:
 INDUCTANCE 7 Henries at full current rating.
 DC CURRENT RATING 300 MA
 DC RESISTANCE Approx. 80 ohms.
 INSULATION Winding to be insulated for 6000 V.

MECHANICAL SPECIFICATIONS:
 CASE Rectangular, Steel, MIL Type YY, hermetically sealed.
 FINISH TMC Smooth Grey Enamel (S-115), except terminal end.
 SIZE 3-1/4 X 3-5/8 X 5 High, excluding studs and terminals.
 STAMPING Terminals shall be metal stamped 1 and 2 as shown. Opposite end shall be rubber stamped in black as shown.

NOTE: MANUFACTURED IN ACCORDANCE WITH MIL SPEC T-27-A EXCEPT THAT MIL SPEC T-27-A SHALL NOT APPEAR ON CASE AND QUALIFICATION TESTING IS NOT REQUIRED.

REACTOR SHALL BE IN ACCORDANCE WITH MIL-T-27A AND AMENDMENTS.
 GRADE 1, CLASS R, FAMILY 04
 MIL TYPE THERMO, YY

B							
A	1	INSULATION 6000V WAS 5000V	6-24-65 14321	D.V.V.	<i>[Signature]</i>	<i>[Signature]</i>	
		NOTE ADDED (MIL-T-27-A)	6-29-60 2572		<i>[Signature]</i>	<i>[Signature]</i>	
ISSUE	ITEM	CHANGED FROM	DATE	CH. NO.	DRAFTS	CHECKER	ENG. APP.
TOLERANCES			SCALE: FULL				
DEC. DIM. ±		MAXIMUM ALLOWABLE TOLERANCES HAVE BEEN DETERMINED AND ANY DEVIATIONS WILL BE CAUSE FOR REJECTION. REMOVE ALL BURRS AND SHARP EDGES					
FRAC. DIM. ± 1/64							
ANGULAR DIM. ±							

2	PSP-350	PAL-350	L103,104	7/22/58
REQ. PER UNIT	MODEL	PROJECT NO.	ASS'Y. NO.	DATE
USED ON				

REF: Reactor Transformer 22... No.

REQ. ITEM	PART NO.	DESCRIPTION	SYMBOL
		THE TECHNICAL MATERIEL CORP. MAMARONECK, NEW YORK	
	STOCK SIZE	REACTOR, 7 HENRY, 300 MA	
	MATERIAL		
		16 7/22/58	<i>[Signature]</i>
	TYPE & TEMPER	HEAT TREAT. SPEC.	DRAWN
			CHECKED
			FINAL APPROVAL
			TF-190
			B