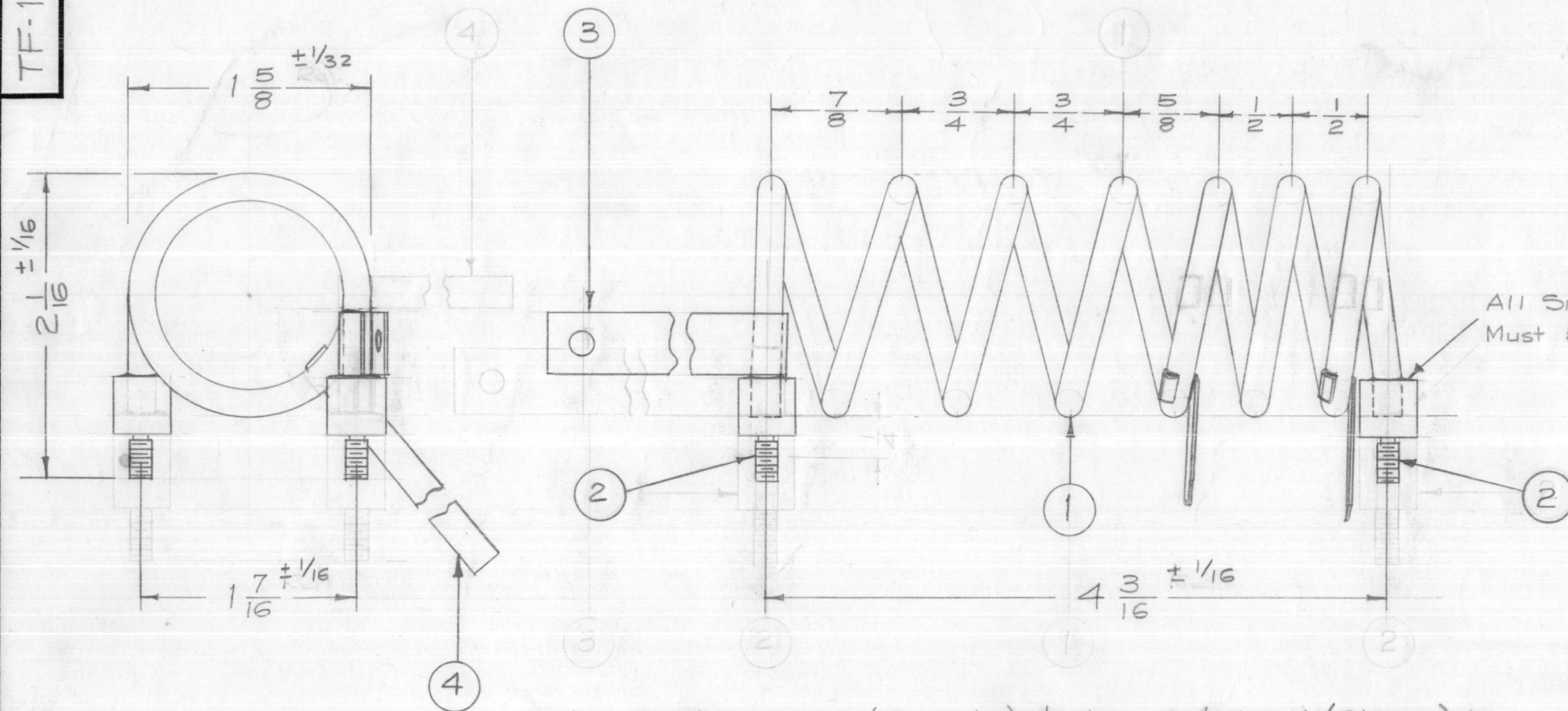


NOTICE TO PERSONS RECEIVING THIS DRAWING

THE TECHNICAL MATERIEL CORPORATION claims proprietary right in the material disclosed hereon. This drawing is issued in confidence for engineering information only and may not be reproduced or used to manufacture anything shown hereon without permission from THE TECHNICAL MATERIEL CORPORATION to the user. This drawing is loaned for mutual assistance and is subject to recall at any time.

Property of:

THE TECHNICAL MATERIEL CORPORATION
MAMARONECK, NEW YORK



Note: Solder item 2 (Bushing) & item 3 & item 4 (Straps) to item 1 (Coil) with item 5 (Silver Solder). Then Silver Plate entire unit.

ELECTRICAL SPEC:

Inductance -

MECHANICAL SPEC:

Winding Direction - CCW
No. of Turns - 6-1/2

X	5	BS-101-1	Solder, Silver	
2	4	MS-203-1-2.00	Lead, Connecting, 1/4 Wide	2" lg.
1	3	MS-202-4-7.00	Lead, Connecting, 7/16 Wide	7" lg.
2	2	PM-491	Bushing, Transformer	
X	1	TU-100-3N	Tubing, Copper (3/16 OD x .127 ID)	

REQ. ITEM	PART NO.	DESCRIPTION	SYMBOL
THE TECHNICAL MATERIEL CORP. MAMARONECK, NEW YORK			
STOCK SIZE			
TRANSFORMER, RF, FIXED,			
MATERIAL			
16-32 MC (T208)			
		16 ^{5/24} /58	A.J.J.
TYPE & TEMPER		HEAT TREAT. SPEC.	DRAWN
S-24E Silver Plate			WYO
.0005			RFB
FINISH & SPEC. NO.		ELEC. DES. APP.	MECH. DES. APP.
			TF-188 B

ISSUE	ITEM	CHANGED FROM	DATE	CH. NO.	DRAFTS	CHECKER	ENG. APP.
B	1	ITEM 4 TAPS MOVED DOWN ON TURNS	6/25/58	2	16	Jde	AJM
A	1	Bushing Size chgd (item 2) Height Added (2-1/16) item 3 was 6-1/2"	6/5/58	1	16	Jde	AJM

TOLERANCES SCALE: FULL

DEC. DIM. ±
FRAC. DIM. ±
ANGULAR DIM. ±

A MAXIMUM ALLOWABLE TOLERANCES HAVE BEEN DETERMINED AND ANY DEVIATIONS WILL BE CAUSE FOR REJECTION. REMOVE ALL BURRS AND SHARP EDGES

1	RFA-1	PAL-350	T208	5-24-58
REQ. PER UNIT	MODEL	PROJECT NO.	ASS'Y. NO.	DATE
USED ON				