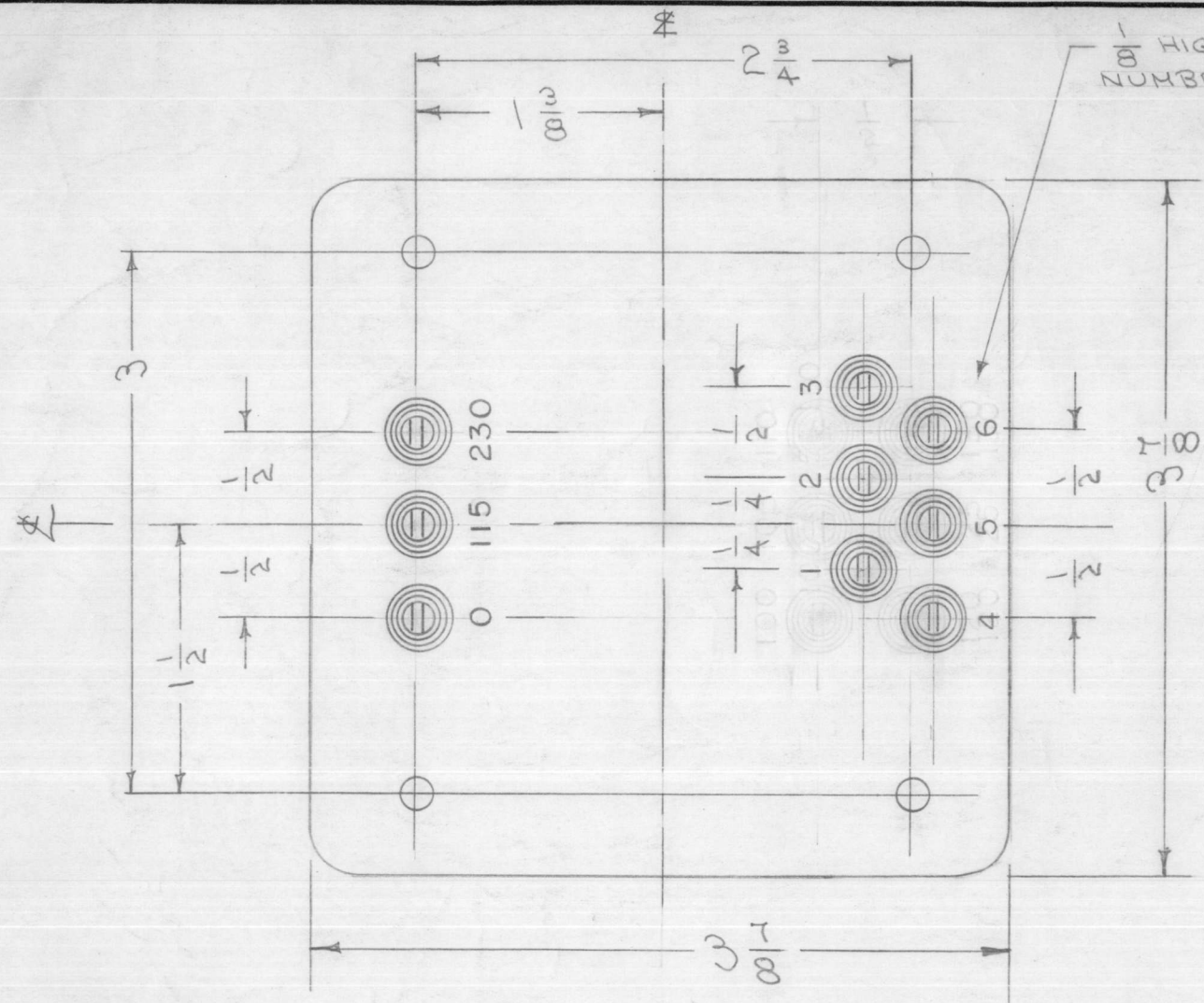
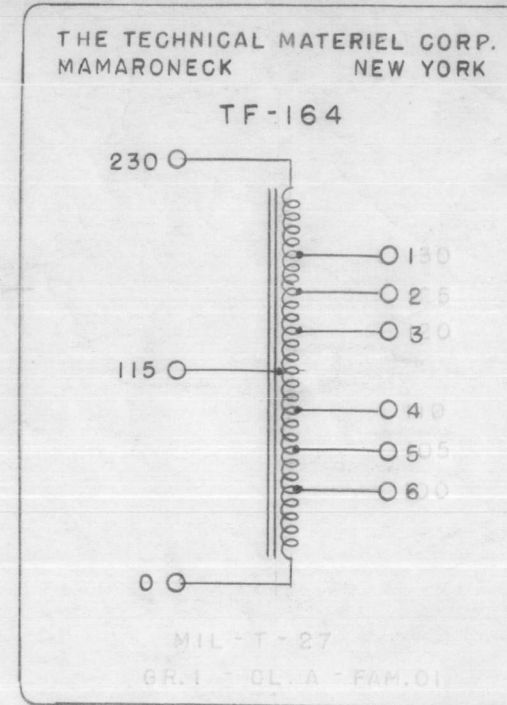


TF-164 A



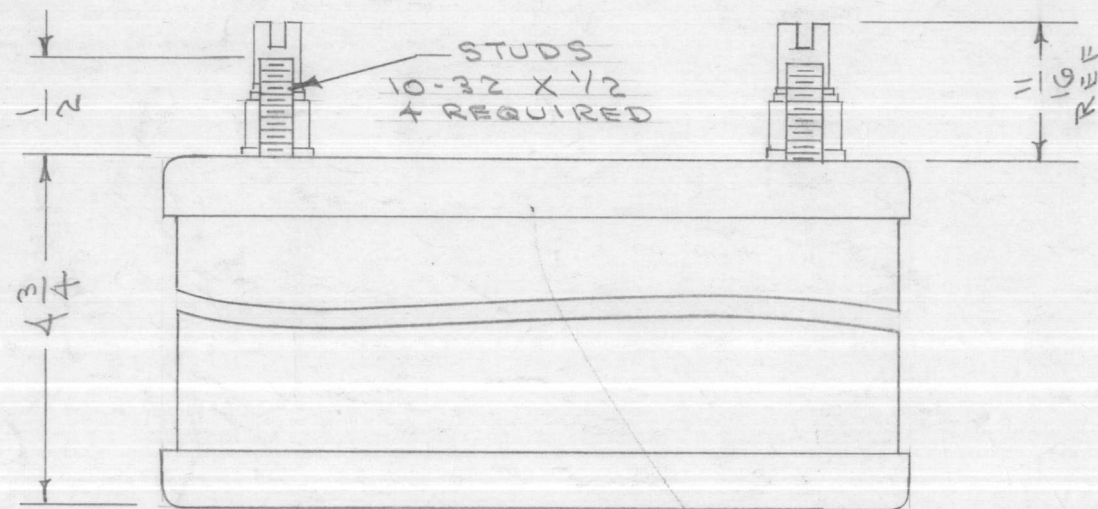
SCHEMATIC DIAGRAM TO APPEAR ON END OPPOSITE TERMINALS.



ELECTRICAL SPECIFICATIONS
 AUTOTRANSFORMER TAPPED TO PROVIDE FOR LINE VOLTAGE ADJUSTMENT
 INPUT - 115 V 50/60 CPS 230 V 50/60 CPS SINGLE PHASE
 OUTPUT - SEVEN POSITIONS TAPPED IN 5 V. STEPS FROM 100 V. TO 130 V. ANY ONE TAP (1,2,3,4,5,6) SHALL BE CAPABLE OF DELIVERING 3A TO LOAD

MECHANICAL SPECIFICATIONS
 CASE - HERMETICALLY SEALED RECTANGULAR STEEL CASE.
 FINISH - S-115 T.M.C. SMOOTH GREY ENAMEL. (EXCEPT TERMINAL END)
 SIZE - 3 7/8" X 3 7/8" X 4 3/4" HIGH EXCLUSIVE OF TERMINALS.

NOTE: MANUFACTURED IN ACCORDANCE WITH MIL SPEC T-27-A EXCEPT THAT MIL SPEC T-27-A SHALL NOT APPEAR ON CASE AND QUALIFICATION TESTING IS NOT REQUIRED.



ISSUE	ITEM	CHANGED FROM	DATE	CH. NO.	DRAFTS	CHECKER	ENG. APP.
A	1	NOTE ADDED (MIL T-27-A)	6-29-60	2572			

TOLERANCES		SCALE:
DEC. DIM. ±	A	MAXIMUM ALLOWABLE TOLERANCES HAVE BEEN DETERMINED AND ANY DEVIATIONS WILL BE CAUSE FOR REJECTION. REMOVE ALL BURRS AND SHARP EDGES
FRAC. DIM. ±		
ANGULAR DIM. ±		

REQ. PER UNIT	MODEL	PROJECT NO.	ASS'Y. NO.	DATE
	RTP-2 RTP			10-22-58 5-23-58

REQ. ITEM	PART NO.	DESCRIPTION	SYMBOL
		THE TECHNICAL MATERIEL CORP. MAMARONECK. NEW YORK	
		AUTOTRANSFORMER	
		LINE VOLTAGE ADJUST	
		CDD. C-1-55	A.J.J.
		DRAWN	CHECKED
		O.I.P.	10/26/58
		ELEC. DES. APP.	MECH. DES. APP.
			TF-164