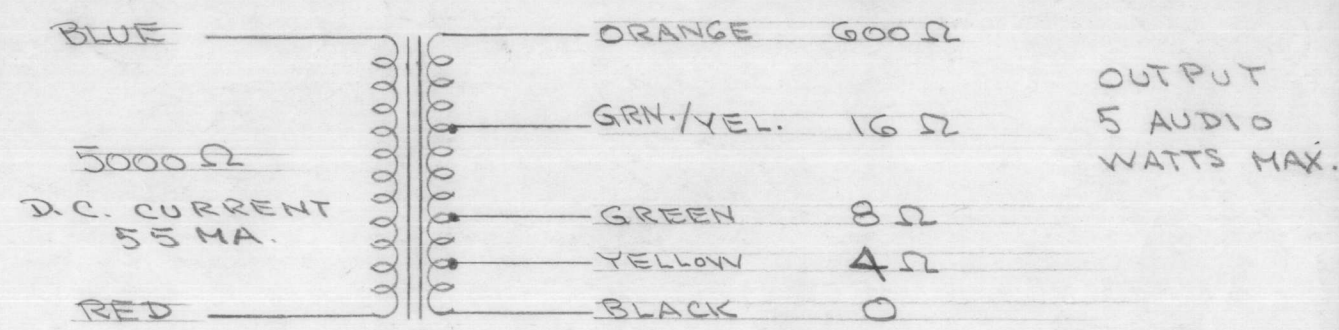
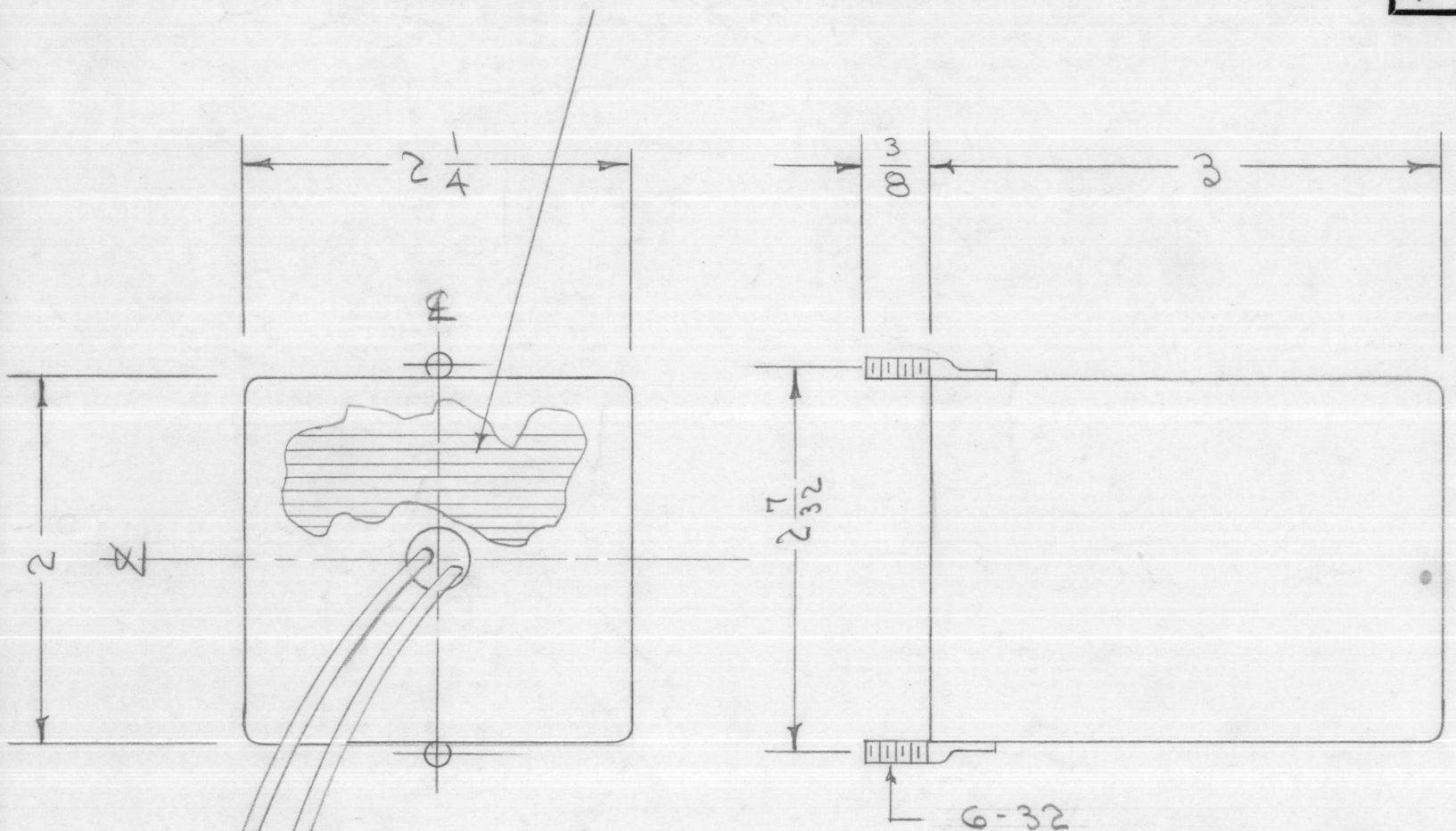


IF IT IS FOUND DESIRABLE TO CHANGE ANY TOLERANCE OR OTHER DETAIL SPECIFIED ON THIS DRAWING NOTIFY THE PURCHASER PROMPTLY.

MAXIMUM ALLOWABLE TOLERANCES HAVE BEEN DETERMINED AND DEVIATIONS WILL BE CAUSE FOR REJECTION. REMOVE ALL BURRS AND SHARP EDGES

TF-159 B

NOTE: LAMINATIONS TO PARALLEL 2 1/4" SIDE.



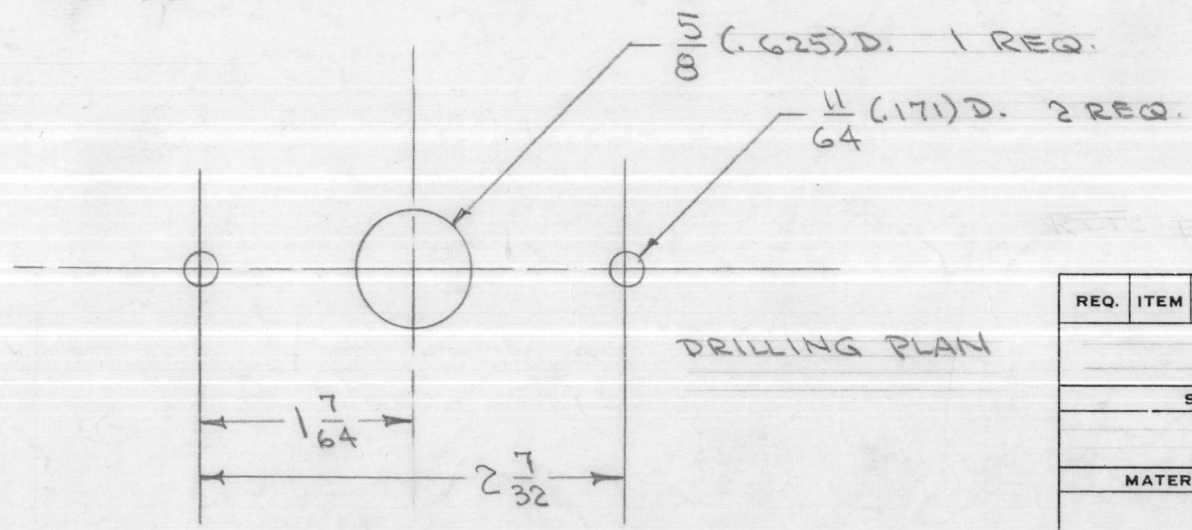
AUDIO RESPONSE - ±3db. 100-10,000 ~
INSULATION TEST - 1000 V.

LEAD LENGTHS

COLOR	LENGTH
BLUE	6 1/2"
RED	6"
ORANGE	9"
GRN/YEL.	9"
GREEN	8 1/2"
YELLOW	8"
BLACK	7"

LEAD LENGTHS SHOWN ARE TOTAL LENGTHS. STRIP 3/4" & TIN

7 LEADS - SEE CHART FOR LENGTHS



DRILLING PLAN

ISSUE	ITEM	CHANGED FROM	DATE	CN. NO.	DRAFTS	CHECKER	ENG. APP.
B	1	LEAD LENGTHS ADDED	8/8/56	2	EDS	WOC	PLK
A	2	LAMINATION NOTE ADDED	5/6/56	1	EDS	HH	A.J.S.
A	1	2" WAS 2 1/8"					

TOLERANCES		SCALE:
ALL OTHERS	DEC. DIM. ± FRAC. DIM. ± 1/64 ANGULAR DIM. ±	A

DRILL, PUNCH, COMMERCIAL STOCK SIZES AND MANUFACTURERS TOLERANCES ARE NOT INCLUDED.

REQ. PER UNIT	MODEL	PROJECT NO.	ASS'Y. NO.	DATE
1	GPR	297		3-8-55

USED ON

REQ. ITEM	PART NO.	DESCRIPTION	SYMBOL
		THE TECHNICAL MATERIEL CORP., MAMARONECK, NEW YORK	
STOCK SIZE		TRANSFORMER, OUTPUT	
MATERIAL		WEIGHT PER PC.	
TYPE & TEMPER		C.O.D. 2-8-55	
HEAT TREAT. SPEC.		DRAWN: HH, ELEC. DES. APP., MECH. DES. APP.	
FINISH & SPEC. NO.		G.T.O. FINAL APPROVAL	
		CHECKED: HH	
		TF-159 B	