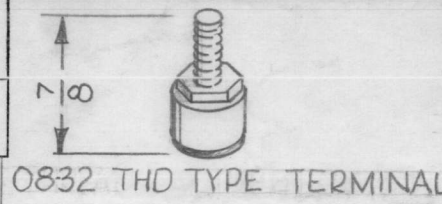
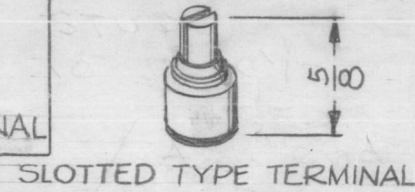


IF IT IS FOUND DESIRABLE TO CHANGE ANY TOLERANCE OR OTHER DETAIL SPECIFIED ON THIS DRAWING NOTIFY THE PURCHASER PROMPTLY.

MAXIMUM ALLOWABLE TOLERANCES HAVE BEEN DETERMINED AND DEVIATIONS WILL BE CAUSE FOR REJECTION. REMOVE ALL BURRS AND SHARP EDGES



0832 THD TYPE TERMINAL



SLOTTED TYPE TERMINAL

G  
TF-155

HARDWARE TO BE SUPPLIED BY TMC:

- ④ LWE10MRN
- ④ NTH1032BN12
- ⑧ FWO8HBN
- ④ LWS08MRN
- ④ NTH0832BN10

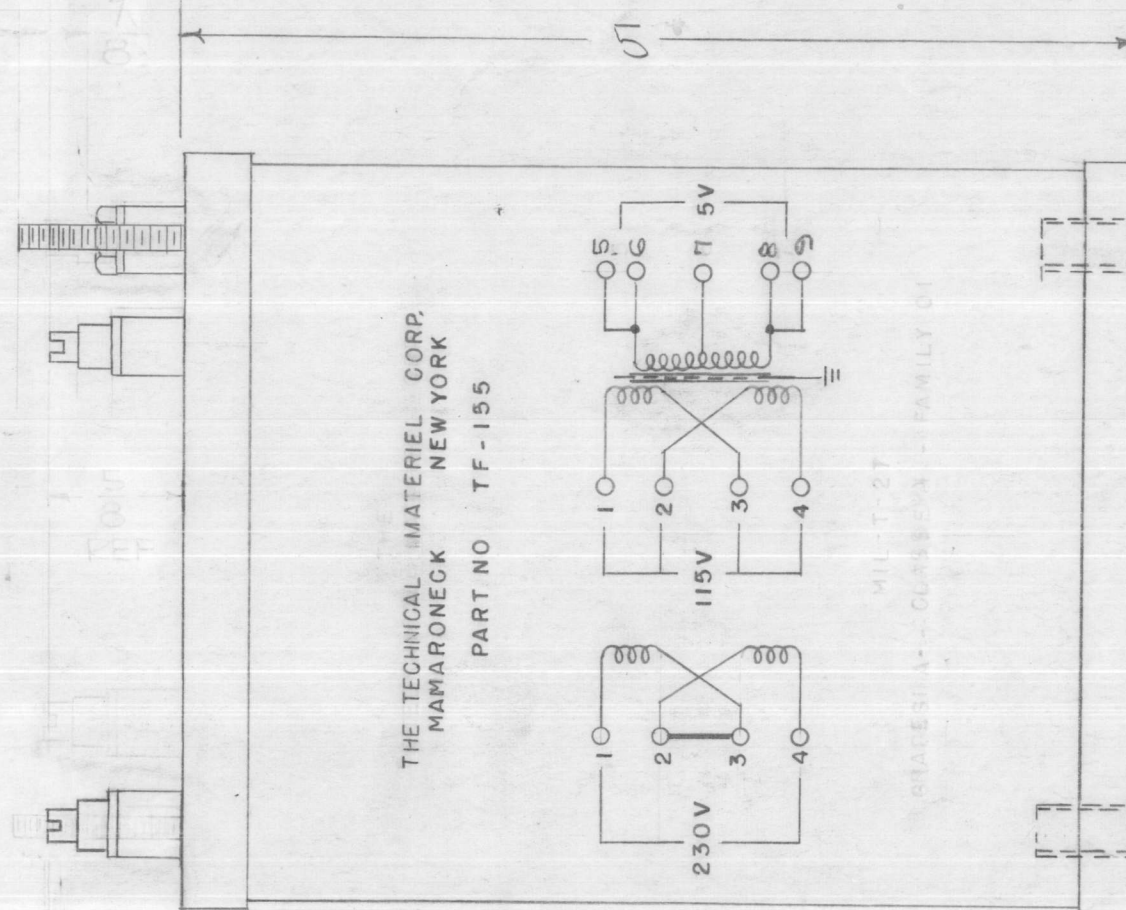
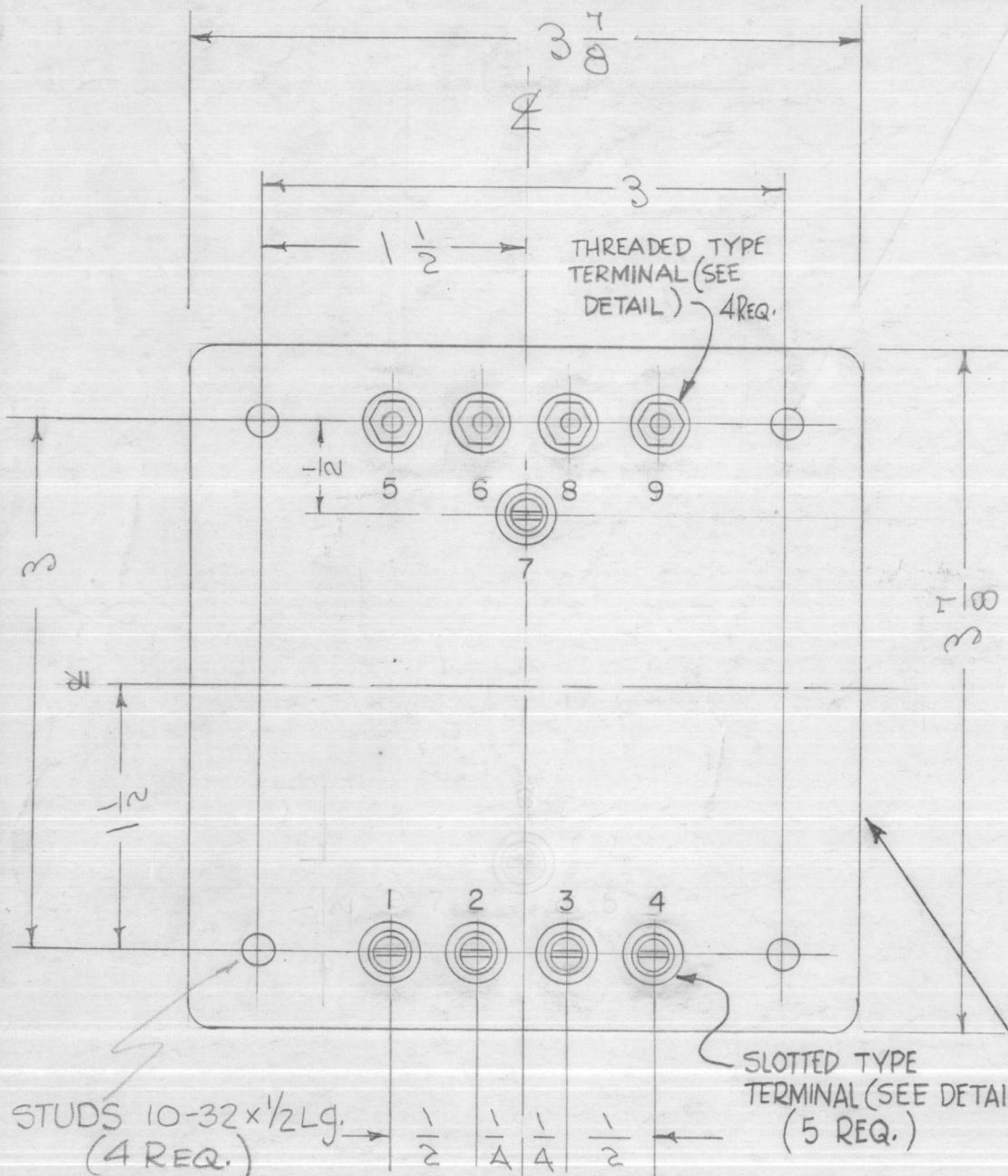
ELECTRICAL SPECIFICATIONS-  
 PRIMARY- 115/230 VAC  
 50/60 CPS  
 SINGLE PHASE

SECONDARY- 5V AT 30 AMP.  
 INSULATION- 1500 V PEAK.  
 ELECTROSTATIC SHIELD SHALL BE INSERTED (FOIL).

MECHANICAL SPECIFICATIONS:

CASE - STEEL  
 COLOR - GRAY (EXCEPT TERMINAL END)  
 STUDS - 10-32 X 1/2 LONG  
 INSERTS - 10-32 X 1/2 DEEP

NOTE: MANUFACTURED IN ACCORDANCE WITH MIL SPEC T-27-A EXCEPT THAT MIL SPEC T-27-A SHALL NOT APPEAR ON CASE AND QUALIFICATION TESTING IS NOT REQUIRED.



THE TECHNICAL MATERIEL CORP.  
 MAMARONECK NEW YORK  
 PART NO TF-155

MIL-T-27  
 CLASSIFICATION - FAMILY OF

10-32 INSERTS  
 1/2 DEEP  
 4 REQ.  
 LAYOUT DIMENSIONS SAME AS STUDS

STUDS 10-32x1/2Lg. (4 REQ.)  
 METAL STAMP AS SHOWN 1-2-3-4-5-6-7-8-9

SCHEMATIC TO BE AS ABOVE AND ON SIDE SHOWN.

ISSUE	ITEM	CHANGED FROM	DATE	CN. NO.	DRAFTS	CHECKER	ENG. APP.
G	1	THD SIZE ADDED HWADDED	3-30-54	16033	WJO	WJO	
F	1	TERM. UPDATED, DIMS. ADD.	8-8-64	12069	WJB	WJB	
E	1	ADDED 7/8 DIM. 5/8 DIM. RELOCATED	9/26/63	10054	WJB	WJB	
D	1	NOTE ADDED (MIL T-27-A)	6-29-60	2572	WJB	WJB	
C	1	TERM. LUGS REVERSED	3-10-56	3	WJB	WJB	
B	1	REDRAWN - CASE SIZE ADDED	9/14/54	2	WJB	WJB	

TOLERANCES		SCALE:
ALL OTHERS	DEC. DIM. ± FRAC. DIM. ± 1/64 ANGULAR DIM. ±	A DRILL, PUNCH, COMMERCIAL STOCK SIZES AND MANUFACTURERS TOLERANCES ARE NOT INCLUDED.

1	RTF-2	P/A	11-20-58
1	GPT-750RF		9-12-55
REQ. PER UNIT	MODEL	PROJECT NO.	ASS'Y. NO.
			DATE

REQ.	ITEM	PART NO.	DESCRIPTION	SYMBOL
			THE TECHNICAL MATERIEL CORP. MAMARONECK, NEW YORK	
			STOCK SIZE	
			MATERIAL	WEIGHT PER PC.
			TYPE & TEMPER	
			HEAT TREAT. SPEC.	
			FINISH & SPEC. NO.	

DD. 9/12/55  
 DRAWN: [Signature]  
 ELEC. DES. APP.: [Signature]  
 MECH. DES. APP.: [Signature]  
 CHECKED: [Signature]  
 FINAL APPROVAL: [Signature]  
 TF-155 G