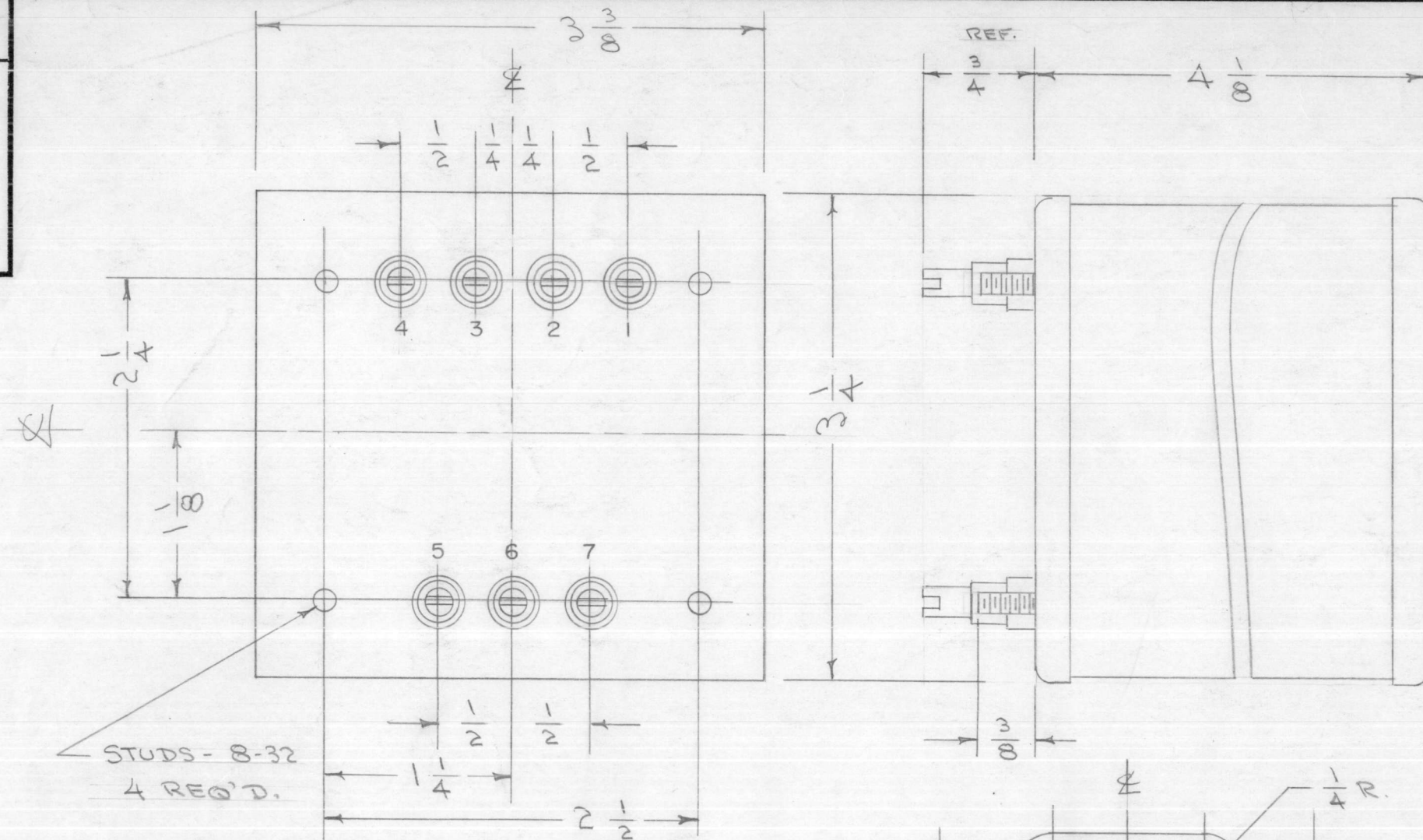
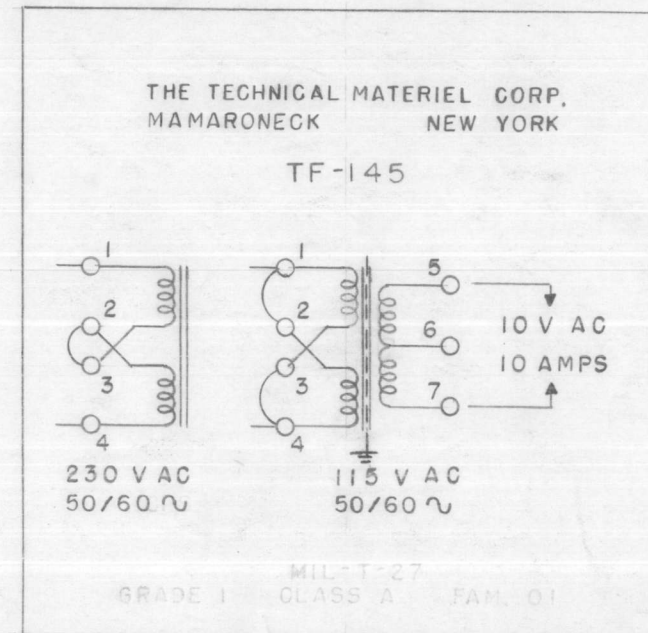


TF-145 A



SCHEMATIC TO APPEAR ON END OPPOSITE TERMINALS



STUDS - 8-32
4 REQ'D.

METAL STAMP AS ABOVE
1, 2, 3, 4, 5, 6, 7

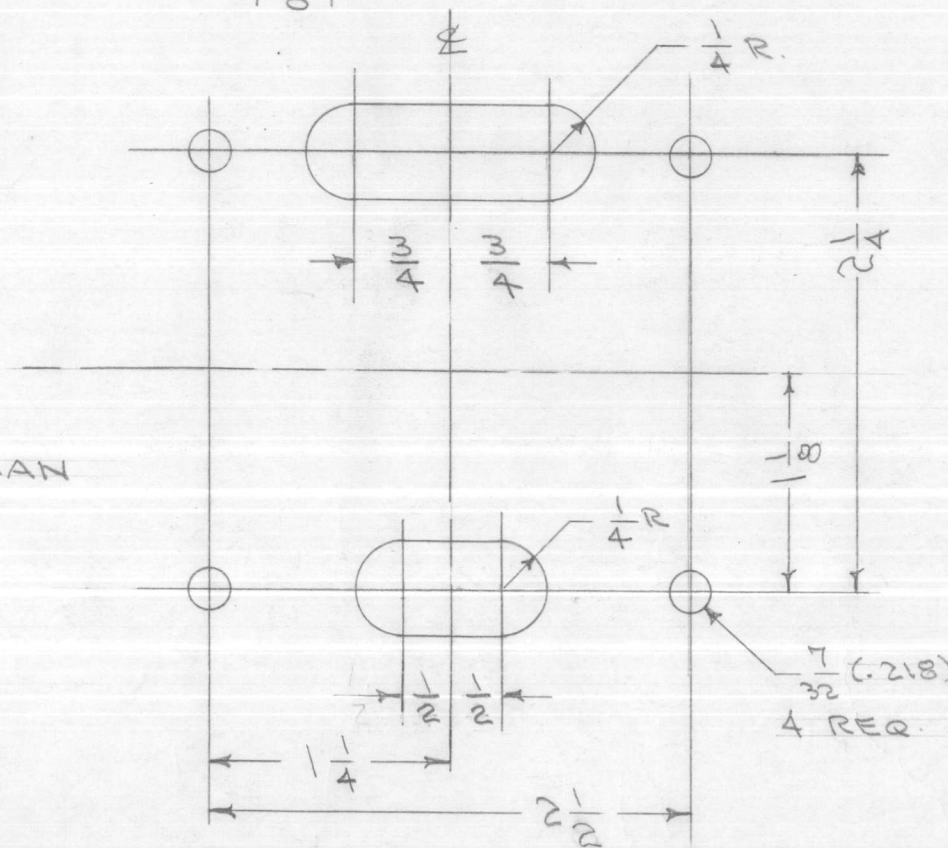
MECHANICAL SPECIFICATIONS
CASE - HERMETICALLY SEALED RECTANGULAR STEEL.
COLOR - TMC SMOOTH GRAY (9-115)
STUDS - 8-32 X 3/8
SIZE - 3/4 X 3 3/8 X 4 1/8 EXCLUSIVE OF TERMINALS

ELECTRICAL SPECIFICATIONS
PRIMARY - 115/230 V AC @ 50/60 CPS
SECONDARY - 10 V @ 10 A. CENTER TAPPED
INSULATION - ALL WINDINGS SHALL BE INSULATED FOR 1500 V.

ELECTROSTATIC SHIELD SHALL BE INSERTED (FOIL).

NOTE: MANUFACTURED IN ACCORDANCE WITH MIL SPEC T-27-A EXCEPT THAT MIL SPEC T-27-A SHALL NOT APPEAR ON CASE AND QUALIFICATION TESTING IS NOT REQUIRED.

DRILLING PLAN



ISSUE	ITEM	CHANGED FROM	DATE	CH. NO.	DRAFTS	CHECKER	ENG. APP.
A	1	NOTE ADDED (MIL T-27-A)	6-29-60	2572			
TOLERANCES			SCALE:				
DEC. DIM. ±			MAXIMUM ALLOWABLE TOLERANCES HAVE BEEN DETERMINED AND ANY DEVIATIONS WILL BE CAUSE FOR REJECTION. REMOVE ALL BURRS AND SHARP EDGES				
FRAC. DIM. ±							
ANGULAR DIM. ±							

1	RTM-2		10-16-58	
1	RTM		5-23-58	
REQ. PER UNIT	MODEL	PROJECT NO.	ASS'Y. NO.	DATE
USED ON				

REQ. ITEM	PART NO.	DESCRIPTION	SYMBOL
THE TECHNICAL MATERIEL CORP. MAMARONECK, NEW YORK			
TRANSFORMER, FILAMENT			
MATERIAL			
TYPE & TEMPER		HEAT TREAT. SPEC.	DRAWN
FINISH & SPEC. NO.		ELEC. DES. APP.	MECH. DES. APP.
		A. J. J.	
		TF-145 A	