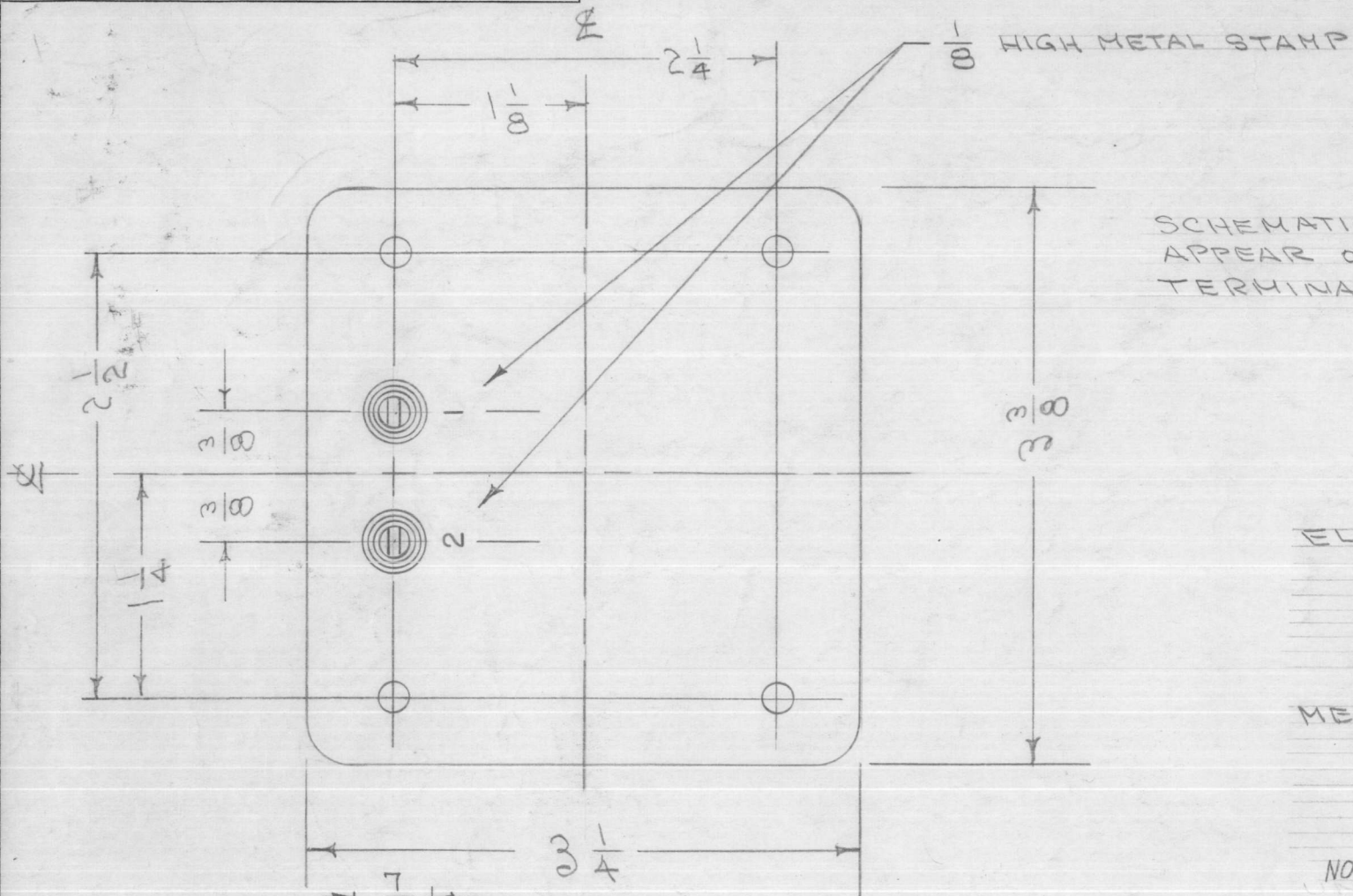
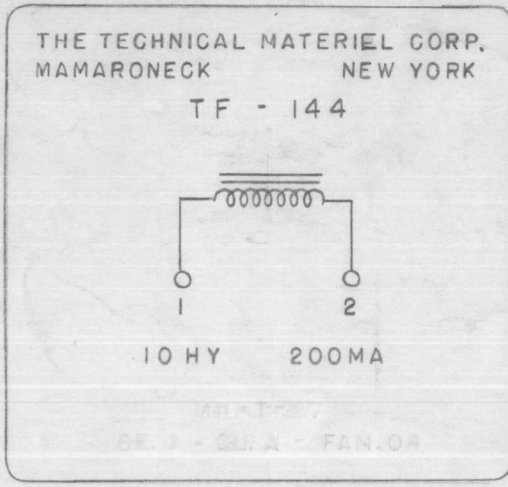


IF IT IS FOUND DESIRABLE TO CHANGE ANY TOLERANCE OR OTHER DETAIL SPECIFIED ON THIS DRAWING NOTIFY THE PURCHASER PROMPTLY.

MAXIMUM ALLOWABLE TOLERANCES HAVE BEEN DETERMINED AND DEVIATIONS WILL BE CAUSE FOR REJECTION. REMOVE ALL BURRS AND SHARP EDGES

TF-144 D



SCHEMATIC DIAGRAM TO APPEAR ON END OPPOSITE TERMINALS

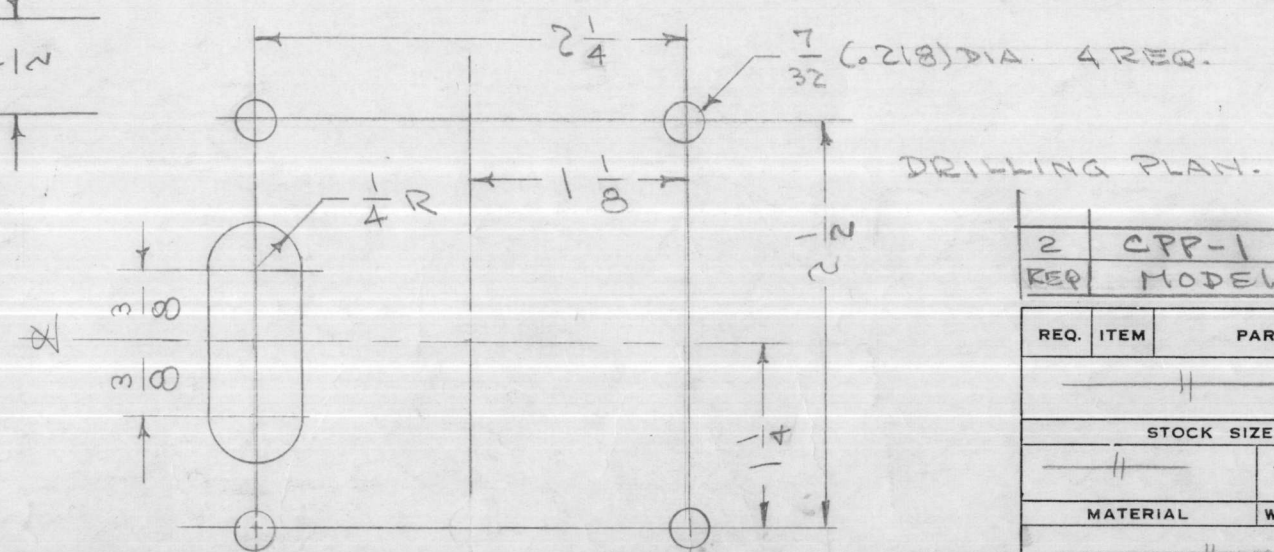
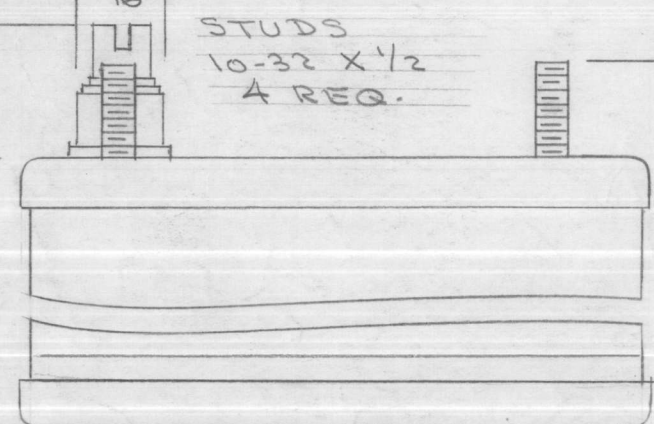
ELECTRICAL SPECIFICATIONS

- INDUCTANCE - 10 HY. AT FULL CURRENT RATING.
- D.C. RES. - APPROX. 85 Ω
- D.C. CURRENT RATING - 200 MA.
- INSULATION - WINDING TO BE INSULATED FOR 1500V.

MECHANICAL SPECIFICATIONS

- CASE - HERMETICALLY SEALED RECTANGULAR STEEL CASE.
- FINISH - S-115 T.M.C SMOOTH GREY ENAMEL. (EXCEPT TERM. END)
- SIZE - 3 1/4" X 3 3/8" X 4" HIGH EXCLUSIVE OF TERMINALS.

NOTE: MANUFACTURED IN ACCORDANCE WITH MIL SPEC T-27-A EXCEPT THAT MIL SPEC T-27-A SHALL NOT APPEAR ON CASE AND QUALIFICATION TESTING IS NOT REQUIRED.



D	1	(1) Hole Relocated on drilling Plan	2-15-61	4173	28m	gcs	cm
C	1	NOTE ADDED (MIL T-27-A)	6-29-60	2572			
B	3	DIM. BACK TO 1" High, 1/16 Term.	7/21/58	409	16		
	2	INSUL. BACK TO 1500V DC RES. BACK TO 85Ω					
A	3	WAS 4" HIGH - 1/16 HIGH TERM.	2/25/58	1	16		
	2	WAS INSUL FOR 1500V (NOW 5000) DC RES. WAS 85Ω (NOW 110)					

ISSUE	ITEM	CHANGED FROM	DATE	CN. NO.	DRAFTS	CHECKER	ENG. APP.
TOLERANCES			SCALE:				
ALL OTHERS	DEC. DIM. ±	FRAC. DIM. ±	DRILL, PUNCH, COMMERCIAL STOCK SIZES AND MANUFACTURERS TOLERANCES ARE NOT INCLUDED.				
	ANGULAR DIM. ±						

3	RTP-2		10-22-58	
3	RTM-2		10-18-58	
3	RTP		5-23-58	
3	NIM		5-23-58	
2	SBE-2		5-5-58	
REQ. PER UNIT	MODEL	PROJECT NO.	ASS'Y. NO.	DATE
				USED ON

2	CPP-1			5/20/60
REQ	MODEL	PROJ	ASSY	DATE
REQ.	ITEM	PART NO.	DESCRIPTION	SYMBOL
			THE TECHNICAL MATERIEL CORP.	
			MAMARONECK, NEW YORK	
			REACTOR, FILTER,	
			10 HY, 200 MA	
			STOCK SIZE	
			MATERIAL	WEIGHT PER PC.
			TYPE & TEMPER.	
			HEAT TREAT. SPEC.	
			FINISH & SPEC. NO.	
			CD. 6-1-55	O.I.P. 4/20/6/55
			DRAWN	ELEC. DES. APP. MECH. DES. APP.
			CHECKED	FINAL APPROVAL
			TF-144	D