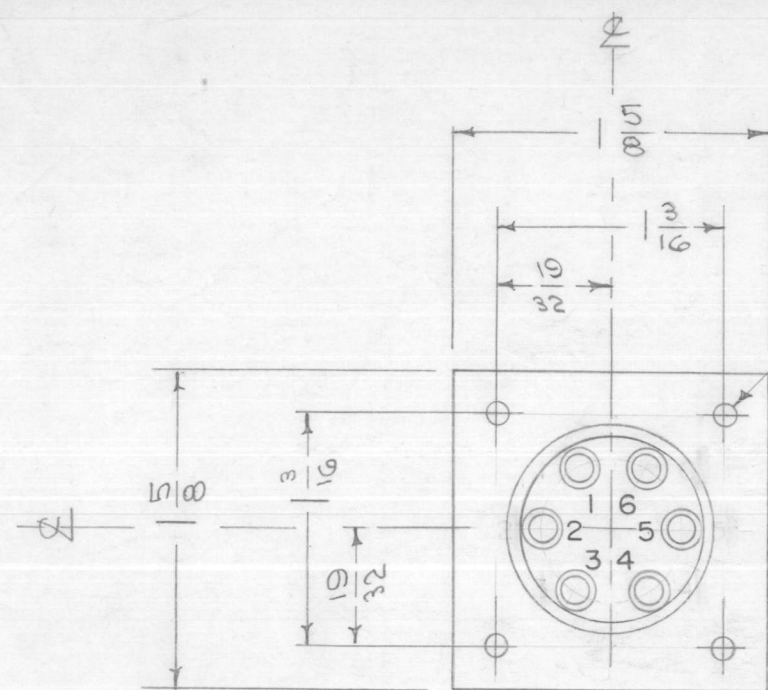


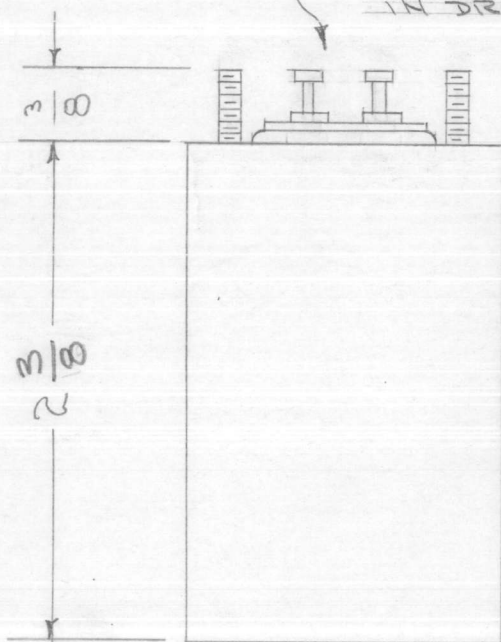
TF-142 C



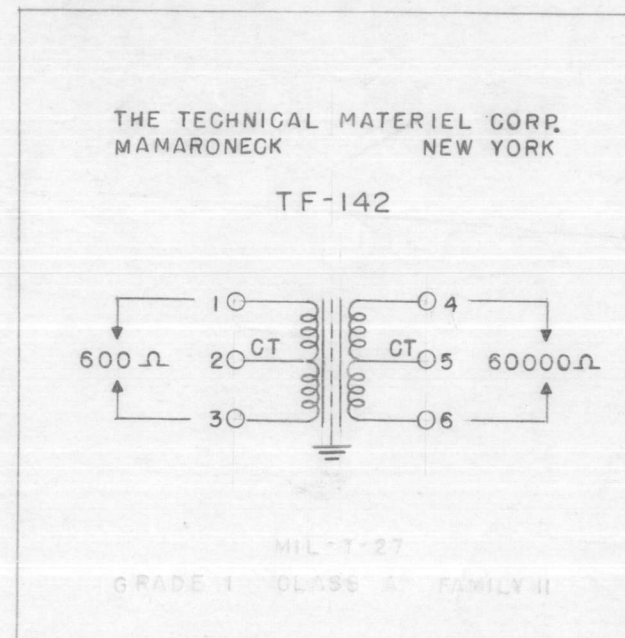
STUDS 6-32 X 3/8  
4 REQUIRED

STAMP AS SHOWN  
1, 2, 3, 4, 5 & 6

TURRET TYPE TERMINAL SECTION  
TO FIT 1/8 CUTOUT AS SHOWN  
IN DRILLING PLAN



SCHEMATIC TO APPEAR ON END OPPOSITE TERMINALS



MECHANICAL SPECIFICATIONS:

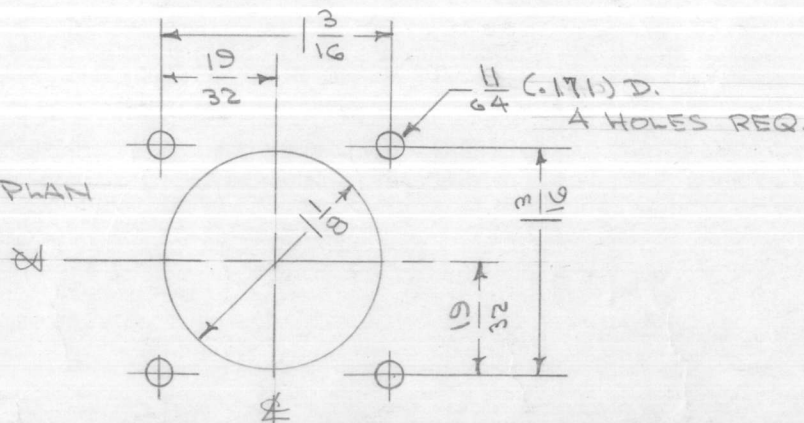
- CASE - HERMETICALLY SEALED RECTANGULAR STEEL CASE.
- FINISH - S-115 T.M.C. SMOOTH GRAY ENAMEL (EXCEPT TERM. END)
- STUDS - 6-32 X 3/8 LONG
- SIZE - 1 5/8 X 1 5/8 X 2 9/16 EXCLUSIVE OF TERMINALS

ELECTRICAL SPECIFICATIONS:

- PRIMARY - 600 OHM CENTER TAPPED
- SECONDARY - 60,000 OHM CENTER TAPPED
- FREQ. RESPONSE - 50 Hz TO 15,000 Hz ± 2 db.
- WINDINGS SHALL BE HUMBUCKING WITH ELECTROSTATIC SHIELD BETWEEN PRI. & SEC.
- INSULATION - WINDINGS SHALL BE INSULATED FOR 1500 V.
- NO D.C. IN WINDINGS.

NOTE: MANUFACTURED IN ACCORDANCE WITH MIL SPEC T-27-A EXCEPT THAT MIL SPEC T-27-A SHALL NOT APPEAR ON CASE AND QUALIFICATION TESTING IS NOT REQUIRED.

DRILLING PLAN



ISSUE	ITEM	CHANGED FROM	DATE	CH. NO.	DRAFTS	CHECKER	ENG. APP.
C	1	NOTE ADDED (MIL T-27-A)	6-29-60	2572			
B	1	HEIGHT CHGD FROM 2-9/16 TO 2-3/8 AS PER BX-120-4	1/9/58	2	16	HWL	AWP
A	1	TERM. INFO. ADDED	11-1-55	1		EDS	W.C.W. A.J.J.

TOLERANCES		SCALE:
DEC. DIM. ±	A	MAXIMUM ALLOWABLE TOLERANCES HAVE BEEN DETERMINED AND ANY DEVIATIONS WILL BE CAUSE FOR REJECTION. REMOVE ALL BURRS AND SHARP EDGES
FRAC. DIM. ±		
ANGULAR DIM. ±		

REQ. PER UNIT	MODEL	PROJECT NO.	ASS'Y. NO.	DATE
1	RTM-2			10-16-58
1	RTM			10-13-55

REQ. ITEM	PART NO.	DESCRIPTION	SYMBOL
		THE TECHNICAL MATERIEL CORP. MAMARONECK, NEW YORK	
	STOCK SIZE	TRANSFORMER, AUDIO INPUT	
	MATERIAL	GPT-150	
		EDS 10/13/55	
		AWP	
		AM-10/26/55	
		A.J.J.	
		FINAL APPROVAL	
		TF-142	C