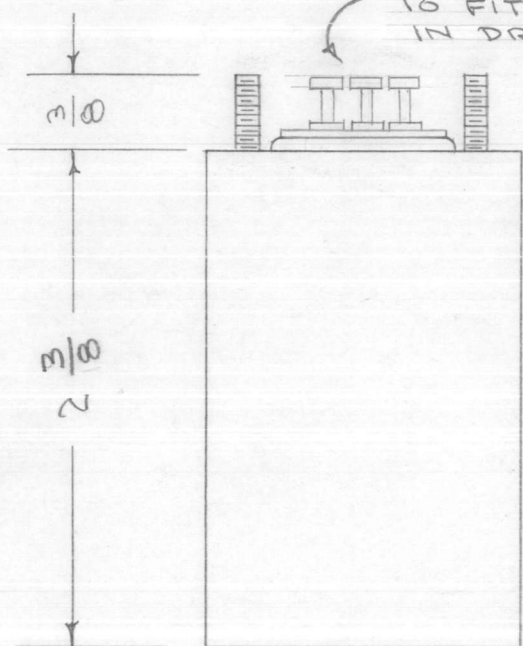
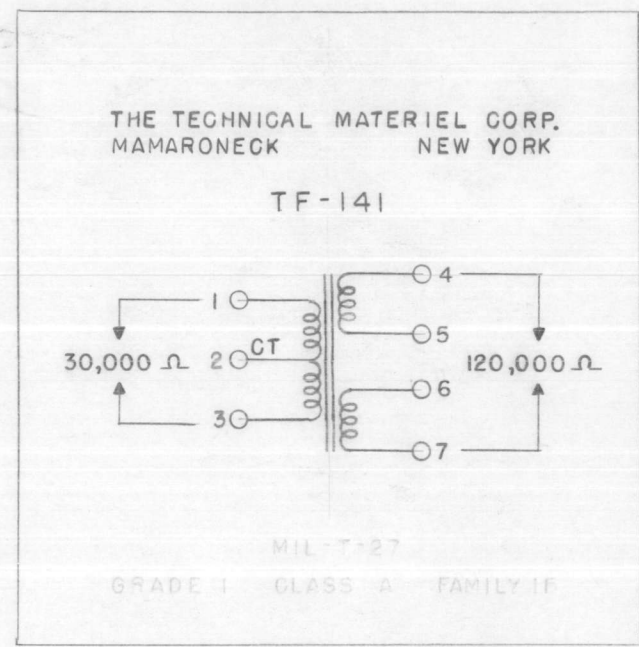


STAMP AS SHOWN
1, 2, 3, 4, 5, 6, 8, 7

TURRET TYPE TERMINAL SECTION
TO FIT 1/8 CUTOUT AS SHOWN
IN DRILLING PLAN



SCHEMATIC TO APPEAR ON END OPPOSITE TERMINALS



MECHANICAL SPECIFICATIONS

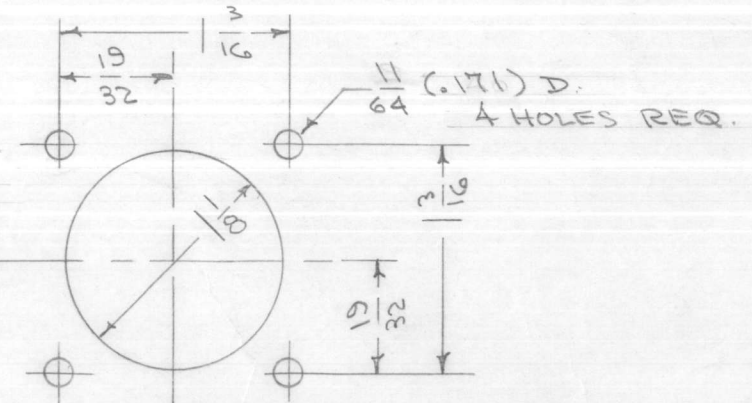
- CASE - HERMETICALLY SEALED RECTANGULAR STEEL CASE
- FINISH - S-115 TMC SMOOTH GRAY ENAMEL (EXCEPT TERM. END)
- STUDS - 6-32 X 3/8 LONG
- SIZE - 1 5/8 X 1 5/8 X 2 9/16 EXCLUSIVE OF TERMINALS

ELECTRICAL SPECIFICATIONS

- PRIMARY - 30,000 Ω CENTER TAPPED. TO CARRY 15MA OF BALANCED DC
- SECONDARY - TWO WINDINGS. 120,000 Ω TOTAL
- FREQ. RESPONSE - FLAT ±2db FROM 50 TO 15,000 Hz.
- INSULATION - ALL WINDINGS SHALL BE INSULATED FOR 1500 V.

NOTE: MANUFACTURED IN ACCORDANCE WITH MIL SPEC T-27-A EXCEPT THAT MIL SPEC T-27-A SHALL NOT APPEAR ON CASE AND QUALIFICATION TESTING IS NOT REQUIRED.

DRILLING PLAN



ISSUE	ITEM	CHANGED FROM	DATE	CH. NO.	DRAFTS	CHECKER	ENG. APP.
C	1	NOTE ADDED (MIL T-27-A)	6-29-60	2572	1		
B	1	HEIGHT CHGD FROM 2-9/16 TO 2-3/8 AS PER BX-100-A	1/9/58	2	16	Hilde	
A	1	TERM. INFO. ADDED.	11-1-57	1	100	W.C.W.	A.J.J.
TOLERANCES			SCALE:				
DEC. DIM. ±			MAXIMUM ALLOWABLE TOLERANCES HAVE BEEN DETERMINED AND ANY DEVIATIONS WILL BE CAUSE FOR REJECTION. REMOVE ALL BURRS AND SHARP EDGES				
FRAC. DIM. ±							
ANGULAR DIM. ±							

1	RTM-2		10-16-58
1	RTM		10-13-55
REQ. PER UNIT	MODEL	PROJECT NO.	ASS'Y. NO.
			DATE
USED ON			

REQ. ITEM	PART NO.	DESCRIPTION		SYMBOL
		THE TECHNICAL MATERIEL CORP. MAMARONECK. NEW YORK		
	STOCK SIZE	TRANSFORMER, AUDIO		
	MATERIAL	INTERSTAGE GPT-450		
		CDD: 10/13/55	Hilde	A.J.J.
	TYPE & TEMPER	HEAT TREAT. SPEC.	DRAWN	CHECKED
				FINAL APPROVAL
	FINISH & SPEC. NO.	ELEC. DES. APP.	MECH. DES. APP.	TF-141 C