

IF IT IS FOUND DESIRABLE TO CHANGE ANY TOLERANCE OR OTHER DETAIL SPECIFIED ON THIS DRAWING NOTIFY THE PURCHASER PROMPTLY.

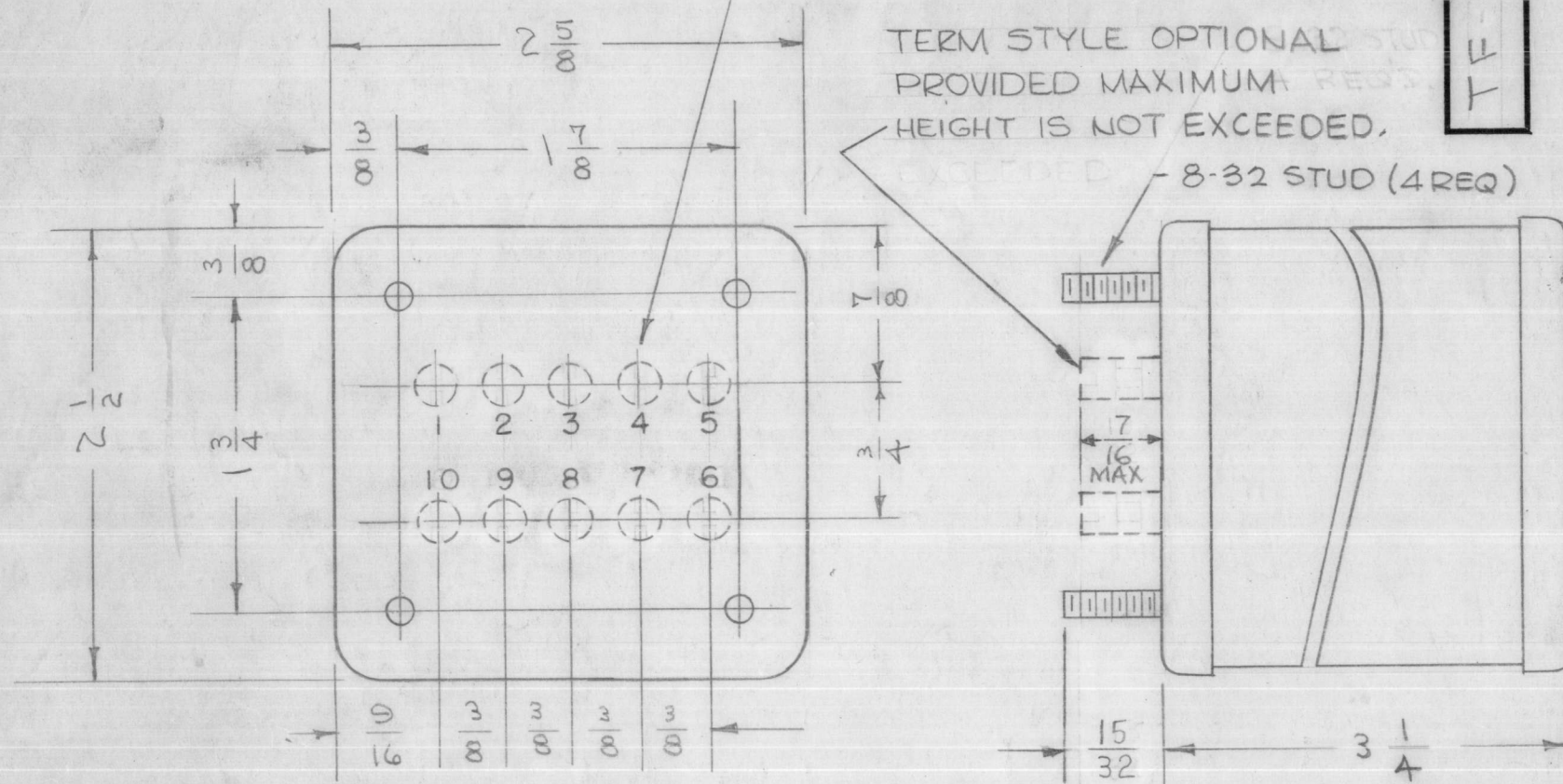
MAXIMUM ALLOWABLE TOLERANCES HAVE BEEN DETERMINED AND DEVIATIONS WILL BE CAUSE FOR REJECTION. REMOVE ALL BURRS AND SHARP EDGES

STAMP TERM. No's AS SHOWN
1/8 HIGH LETTERS

TF-126 G

TERM STYLE OPTIONAL STUD PROVIDED MAXIMUM HEIGHT IS NOT EXCEEDED.

8-32 STUD (4 REQ)



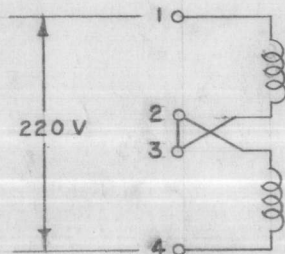
A. ELECTRICAL SPECIFICATIONS:

- PRIMARY: 110/220 volts 50/60 CPS- single phase
- SECONDARY #1: 250-0-250 volts RMS, 35MA DC operating into a 4 MFD capacity input filter.
- SECONDARY #2: 6.3 Volts center tapped at 3 AMPS.
- INSULATION: all windings insulated for 1000 V.
- HEAT RISE: Max. temperature Rise + 40° C.

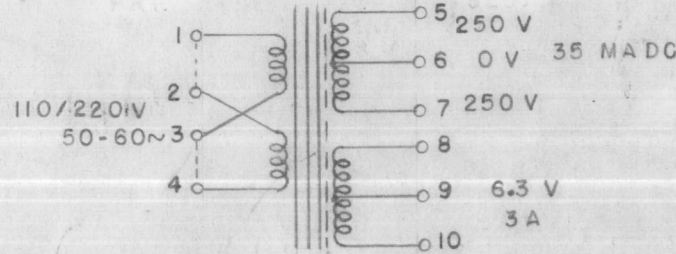
B. MECHANICAL SPECIFICATIONS:

- CASE: Hermetically sealed in rectangular metal can.
- FINISH: Smooth Dark Gray Enamel, Similar or Equal to Maas & Waldstein lot #68397, Navy Spec. 52E4, Type C, Gloss 35 to 40 units. (S115)
- SIZE: 3 1/4 x 2 1/2 x 2 5/8 (Olympic #4 Box) plus terms.
- Mounting Center: As shown
- TERMINALS: 13/32 long O/a solder type terminals and ceramic bushings, located on mounting end.
- LETTERING: Schematic Diagram, TMC Part Number (TF-126)
- TMC Name and part number shall appear on end opposite terminals.

220V CONNECTIONS



THE TECHNICAL MATERIEL CORP.
MAMARONECK NEW YORK
PART NO. TF 126



NOTE: MANUFACTURED IN ACCORDANCE WITH MIL SPEC T-27-A EXCEPT THAT MIL SPEC T-27-A SHALL NOT APPEAR ON CASE AND QUALIFICATION TESTING IS NOT REQUIRED.

ISSUE	ITEM	CHANGED FROM	DATE	CN. NO.	DRAFTS	CHECKER	ENG. APP.
G		TERMS. MADE OPT	6.20.66	16428	LHW	JCB	JC
F	1	SPECS. TERM 13/32 WAS 3/8 13/32 DIM WAS 3/8 15/32 DIM WAS 13/32	6/25/64	11653	A.M.	JCB	JC
E	2	SEE EMN # 10885	2/13/64	10885	A.M.	TR	JCB
D	1	CHG DIM. 13/32 WAS 15/32	9/26/63	10053	JCB	JCB	JCB
C	1	NOTE ADDED (MIL T-27-A)	6/28/64	2572	JCB	JCB	JCB
B	1	STATIC SHIELD ADDED	1/13/63	2	JCB	JCB	G.T.O.
A	1	220 V CONNECTIONS ADDED	7/11/53	1	JCB	JCB	G.T.O.

IMPORTANT:
WHEN TF 126 IS ORDERED AS A SPARE PART FOR THE MODEL GPT-40K, SECTION AP 103, TF 256 WILL BE SENT IN ITS PLACE. ALL OTHER APPLICATIONS OF TF 126 ARE STILL VALID.

NOTE: STATIC SHIELD GROUNDED TO LAMINATION.

ALL DIMENSIONS	DEC. DIM. ± FRAC. DIM. ± ANGULAR DIM. ±	A	DRILL, PUNCH, COMMERCIAL STOCK SIZES AND MANUFACTURERS TOLERANCES ARE NOT INCLUDED.
----------------	---	---	---

REQ.	ITEM	PART NO.	DESCRIPTION	SYMBOL
			THE TECHNICAL MATERIEL CORP. MAMARONECK, NEW YORK	
			TRANSFORMER	
			POWER	
			CDD. B-31-53	G.T.O. WDJ
			DRAWN	ELEC. DES. APP. MECH. DES. APP.
			CHECKED	G.T.O.
				FINAL APPROVAL
				TF 126 G

MODEL	PROJECT NO.	ASS'Y. NO.	DATE