

IF IT IS FOUND DESIRABLE TO CHANGE ANY TOLERANCE OR OTHER DETAIL SPECIFIED ON THIS DRAWING NOTIFY THE PURCHASER PROMPTLY.

MAXIMUM ALLOWABLE TOLERANCES HAVE BEEN DETERMINED AND DEVIATIONS WILL BE CAUSE FOR REJECTION. REMOVE ALL BURRS AND SHARP EDGES

TF-106 G

POWER TRANSFORMER TF-106

ELECTRICAL SPECIFICATIONS

PRIMARY = 110/220 V, 50/60 CYCLE, SINGLE PHASE.

SECONDARY NO. 1 = 600 V, .070 A, CENTER TAPPED.

SECONDARY NO. 2 = 6.3 V, 3 A, CENTER TAPPED.

SECONDARY NO. 3 = 5 V, 2 A.

SECONDARY NO 4 = 6.3 V, 1.2 A SO PHASED THAT

12.6 V WILL APPEAR ACROSS TERMS. 10 & 13

IF TERMS 8 & 14 ARE CONNECTED TOGETHER.

INSULATION = ALL WINDINGS SHALL BE INSULATED FOR 1000 V.

HEAT RISE = MAX. TEMP. RISE + 40°C.

MECHANICAL SPECIFICATIONS

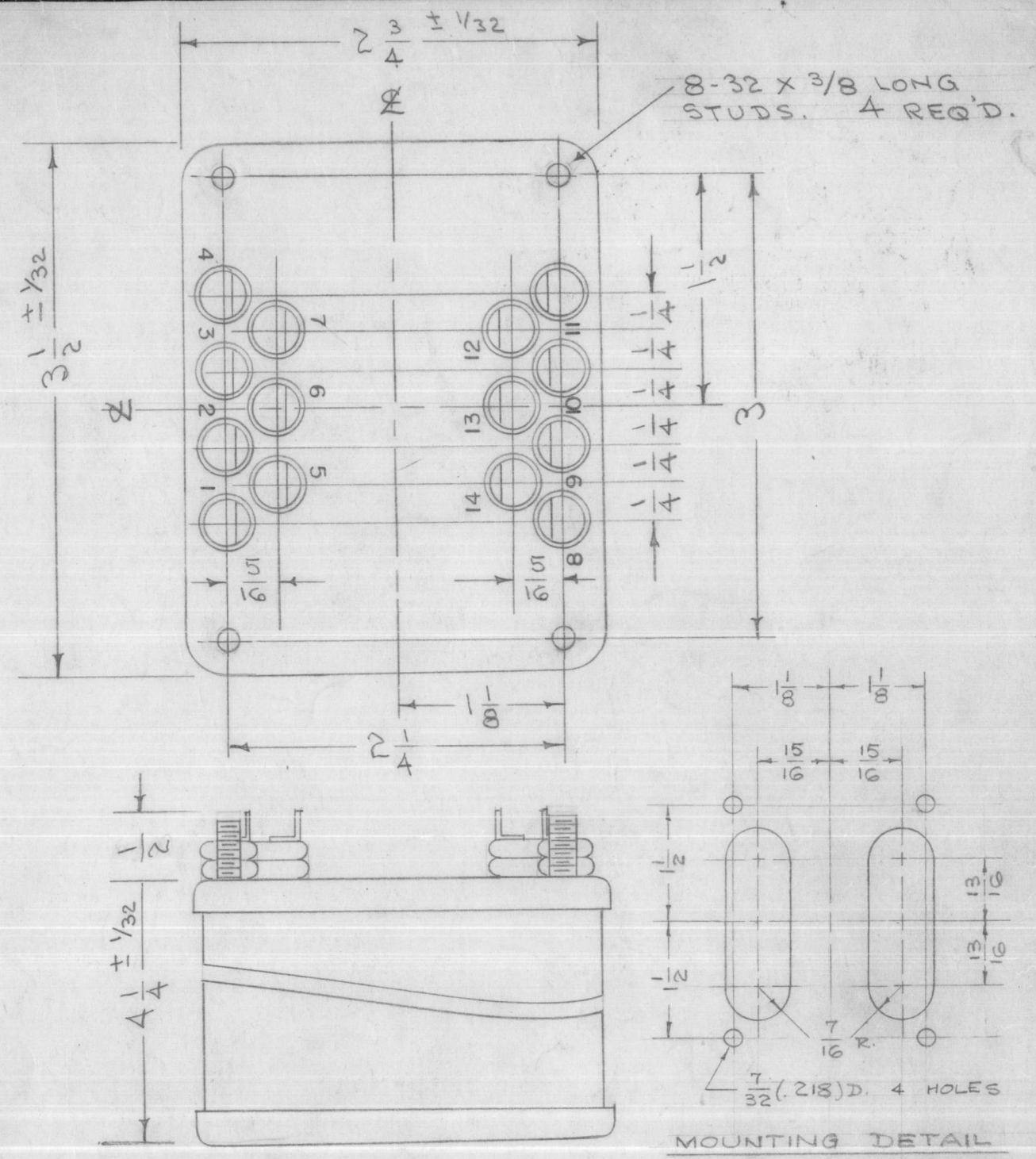
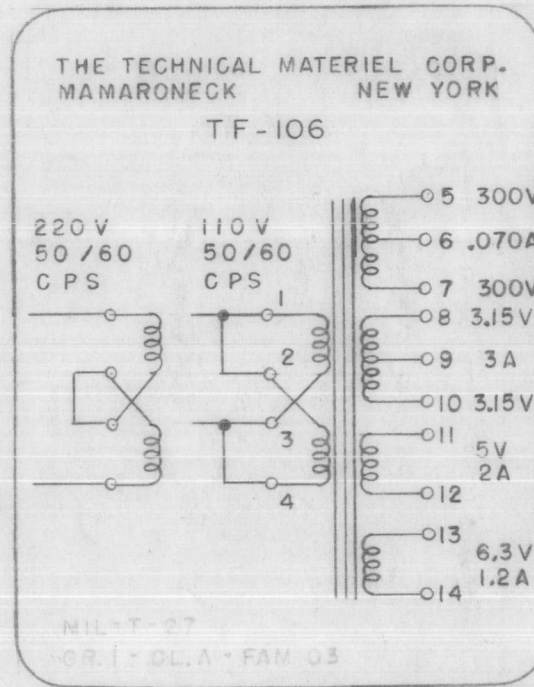
CASE = HERMETICALLY SEALED IN RECTANGULAR STEEL CASE.

FINISH = S-115 SMOOTH GREY ENAMEL.

SIZE = EXCLUSIVE OF TERMS. - 3 1/2" X 2 3/4" X 4 1/4".

LETTERING = TERMS. SHALL BE METAL STAMPED 1 TO 14 AS SHOWN.

OPPOSITE END SHALL APPEAR AS SHOWN



NOTE: MANUFACTURED IN ACCORDANCE WITH MIL SPEC T-27-A EXCEPT THAT MIL SPEC T-27-A SHALL NOT APPEAR ON CASE AND QUALIFICATION TESTING IS NOT REQUIRED.

G	1	NOTE ADDED (MIL T-27-A)	6-28-53	2572	JAW	AW	15
F	1	MOUNTING DETAIL ADDED	3/29/54	3	JAW	AW	
E	3	TOL. ADDED	10/1/54	2	JAW	AW	
D	2	220 V CONNECTION ADDED	5/21/54	1	C.D.D.	JAW	AoJoJo
D	1	REDRAWN					
ISSUE	ITEM	CHANGED FROM	DATE	CN. NO.	DRAFTS	CHECKER	ENG. APP.
TOLERANCES			SCALE:				
ALL OTHERS	DEC. DIM. ±	FRAC. DIM. ±	ANGULAR DIM. ±	DRILL, PUNCH, COMMERCIAL STOCK SIZES AND MANUFACTURERS TOLERANCES ARE NOT INCLUDED.			

RTC					
RSP					1-6-53
CFA					1-6-53
DCU					1-6-53
DVM					1-6-53
PSP					10-3-52
MODEL	PROJECT NO.	ASS'Y. NO.	DATE	USED ON	

REQ.	ITEM	PART NO.	DESCRIPTION	SYMBOL
			THE TECHNICAL MATERIEL CORP. MAMARONECK. NEW YORK	
STOCK SIZE			TRANSFORMER, POWER	
MATERIAL			CDD 10-3-52	
WEIGHT PER PC.			DRAWN: AoJoJo	
TYPE & TEMPER			ELEC. DES. APP. MECH. DES. APP.	
HEAT TREAT. SPEC.			CHECKED: AoJoJo	
FINISH & SPEC. NO.			FINAL APPROVAL	
			SUPERCEDES TF-123	
			TP-001 & AEM-032	
			TF-106 G	