

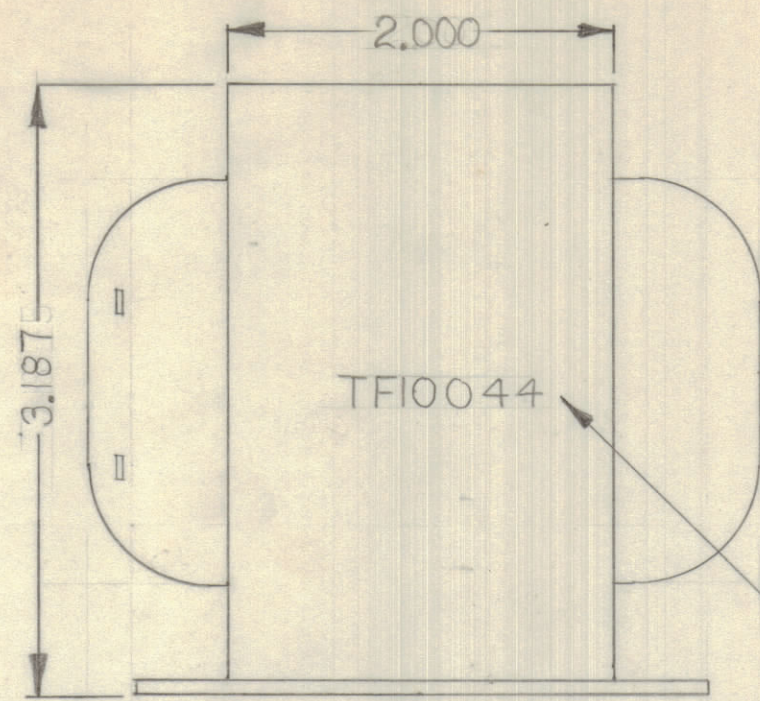
IF IT IS FOUND DESIRABLE TO CHANGE ANY TOLERANCE OR OTHER DETAIL SPECIFIED ON THIS DRAWING NOTIFY THE PURCHASER PROMPTLY.

DIMENSIONS IN INCHES UNLESS OTHERWISE SPECIFIED

MAXIMUM ALLOWABLE TOLERANCES HAVE BEEN DETERMINED AND DEVIATIONS WILL BE CAUSE FOR REJECTION. REMOVE ALL BURRS AND SHARP EDGES.

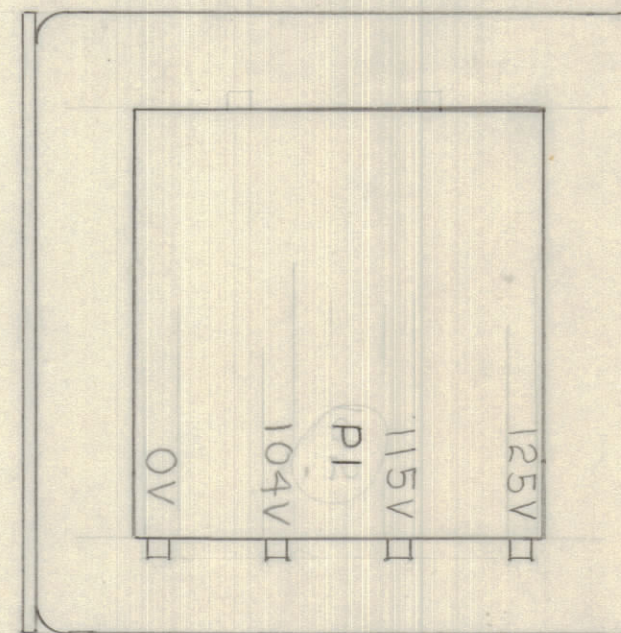
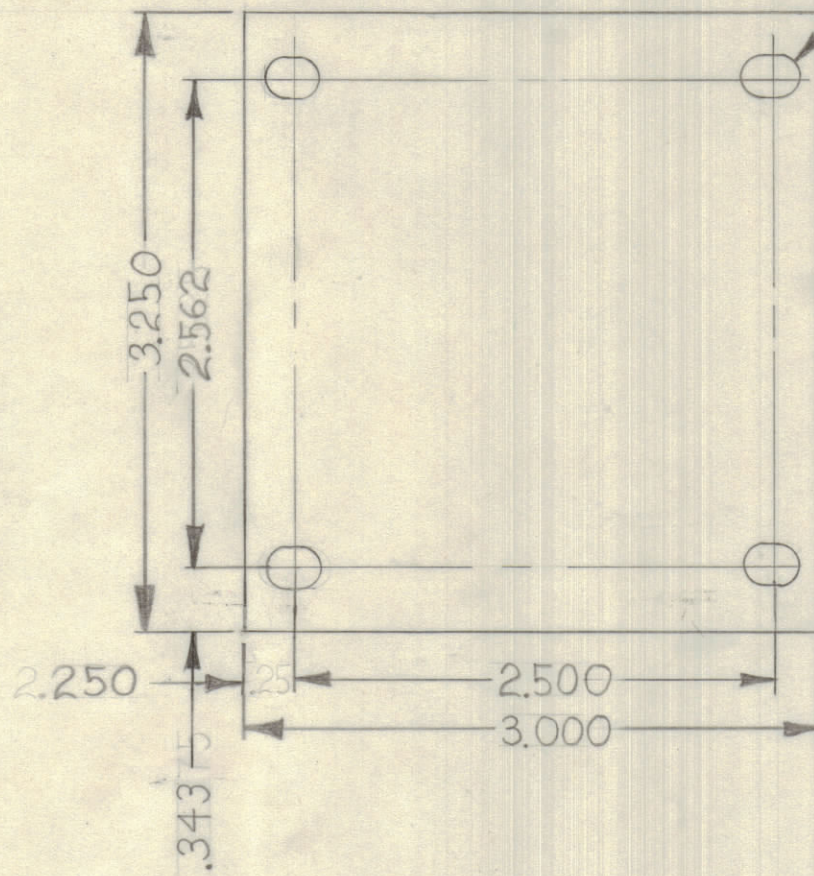
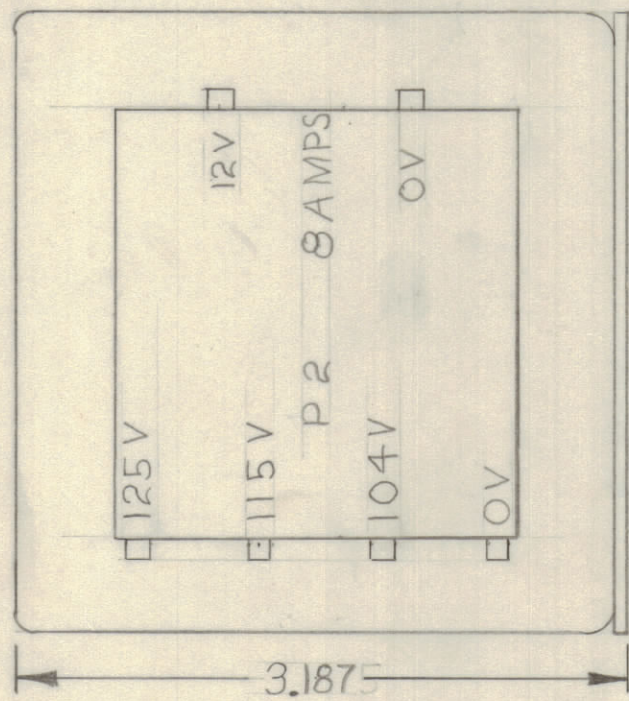
REQ.	ITEM	PART NO.	DESCRIPTION	SYMBOL
------	------	----------	-------------	--------

ISSUE	ITEM	CHANGED FROM	DATE	CH. NO.	DRAFTS	CHECKER	ENG. APP.
Ø		REL TO PROD.	JUNE 11/68		RPL		
A		REDRAWN & REVISED			DR		

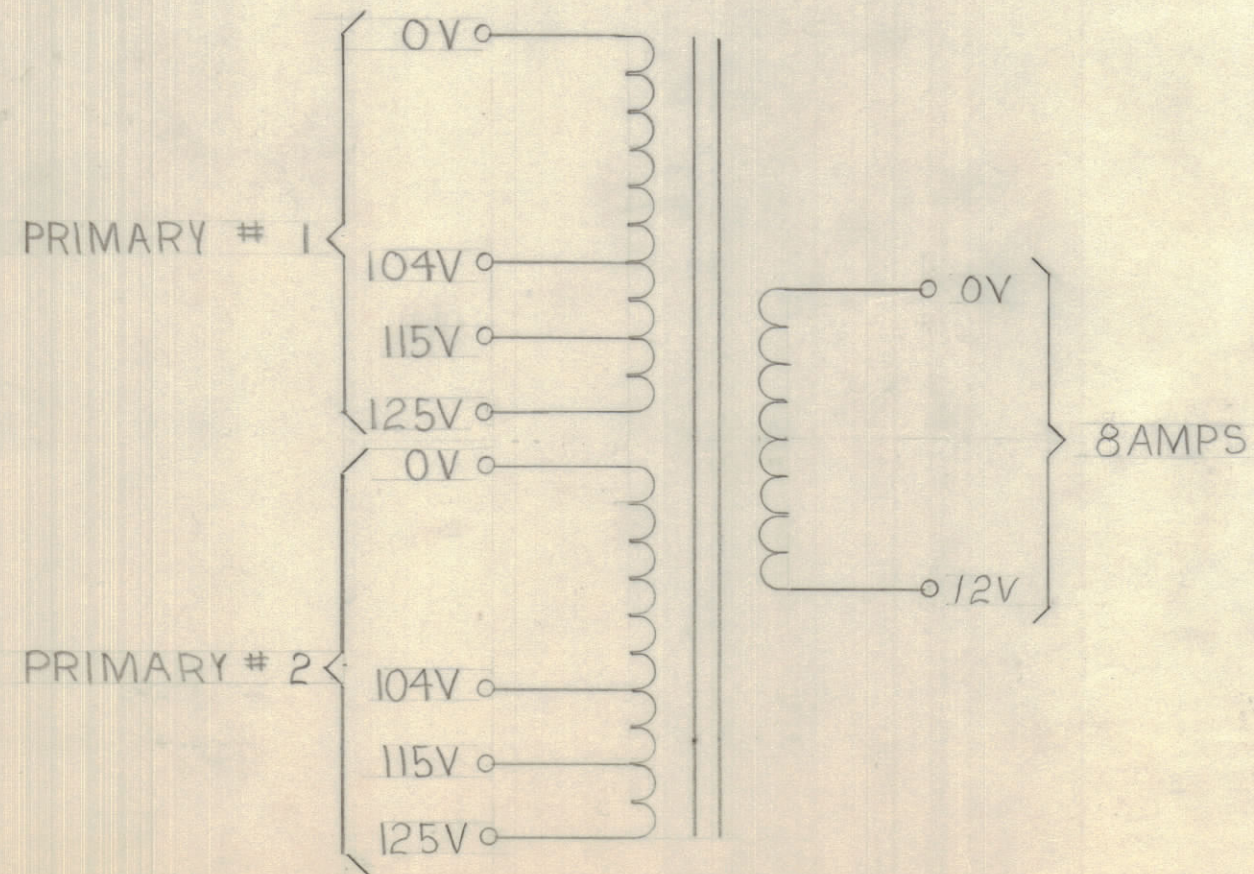


STAMP TMC PART NO. 1/8 HIGH GOTHIC

.203 X .265 SLOTS (4 REQ'D)



TF10044 A



NOTES
 PRIMARY: 104-115-125V/208-230-250V
 50-60 Hz.
 SECONDARY: 12V AT 8 AMPS
 LOAD: 96W RESISTIVE

TOLERANCES		SCALE:
ALL	DEC. DIM. ± .05	DRILL, PUNCH, COMMERCIAL STOCK
OTHERS	FRAC. DIM. ± 1/64 .XX*.01	SIZES AND MANUFACTURERS
	ANGULAR DIM. ± 0° 30' .XXX*.008	TOLERANCES ARE NOT INCLUDED.

SMR-5			SEPT 8/71
MODEL	PROJECT NO.	ASS'Y. NO.	DATE

STOCK SIZE		TMC (Canada) LIMITED	
		OTTAWA ONTARIO	
MATERIAL		POWER TRANSFORMER	
WEIGHT PER PC.		D. REID	
TYPE & TEMPER		DRAWN	ELEC. DES. APP.
HEAT TREAT. SPEC.		CHECKED	MECH. DES. APP.
FINISH & SPEC. NO.		FINAL APPROVAL	
		TF10044 A	