

IF IT IS FOUND DESIRABLE TO CHANGE ANY TOLERANCE OR OTHER DETAIL SPECIFIED ON THIS DRAWING NOTIFY THE PURCHASER PROMPTLY.

MAXIMUM ALLOWABLE TOLERANCES HAVE BEEN DETERMINED AND DEVIATIONS WILL BE CAUSE FOR REJECTION. REMOVE ALL BURRS AND SHARP EDGES

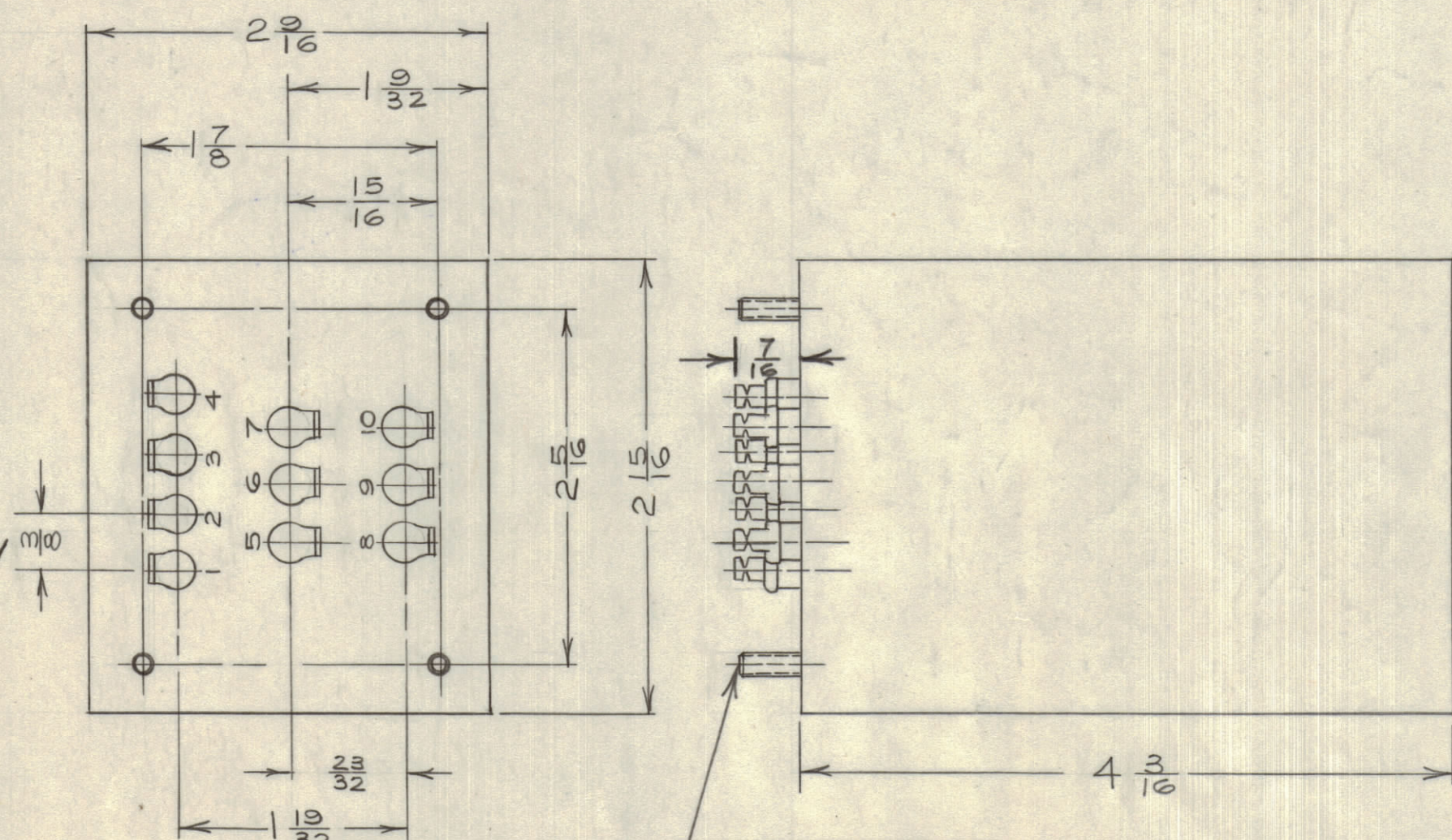
NOTICE TO PERSONS RECEIVING THIS DRAWING

THE TECHNICAL MATERIEL CORPORATION claims proprietary right in the material disclosed hereon. This drawing is issued in confidence for engineering information only and may not be reproduced or used to manufacture anything shown hereon without permission from THE TECHNICAL MATERIEL CORPORATION to the user. This drawing is loaned for mutual assistance and is subject to recall at any time.

Property of:
THE TECHNICAL MATERIEL CORPORATION
MAMARONECK, NEW YORK

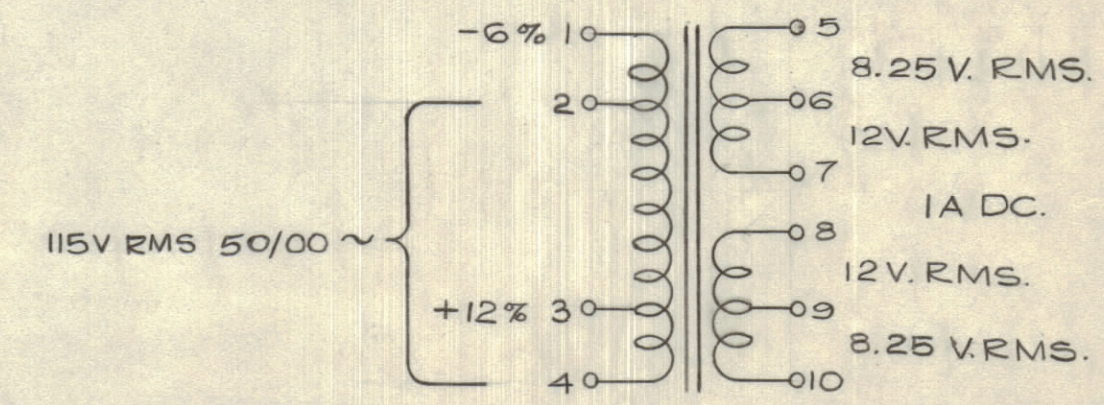
	FULL WAVE BRIDGE SILICON RECTIFIER								FULL WAVE C.T.		
NOM. VAC.*	40.5	32.25	28.5	24	20.25	16.5	12	8.25	40.5CT	24CT	16.5CT
APPROX. D.C.V.*	53	41	34	25	24	18	12	6	24	12	6.6
D.C. AMPS. †	1 (.5)	1.1 (.5)	1.2 (.5)	1.3 (.5)	2 (1)	1.5 (1)	2.5 (2)	3 (2)	1.5 (1)	1.8 (1)	2.3 (2)
D.C. AMPS. ‡	1.2 (.5)	1.5 (.5)	1.5 (.5)	1.6 (.5)	2.5 (1)	2.0 (1)	3 (2)	3.8 (2)	2 (1)	2.2 (1)	2.8 (2)

NOTES: * NOM AC & DC VOLTS ARE AT 115V INPUT PRIMARY TAPS CAN MODIFY - 6%, + 6%, + 12%.
† MIL RATINGS
‡ INDUSTRIAL RATINGS
FIGURES IN BRACKETS INDICATE CAPACITY VALUE IN 1000UF FOR GIVEN D.C. VOLTAGES.



ALL 10 TERMINALS ARE EVENLY SPACED AT 3/8 IN. APART.

STUD - 8-32, 3/8" LONG - 4 REQ.



SCHEMATIC
MIL TYPE TF4RX02 HA.
WORKING VOLTAGE 535V PEAK.

TF10025

STANDARD DRAWING

MFR. NO: H 94

REQ.	ITEM	PART NO.	DESCRIPTION	SYMBOL
			TMC (Canada) LIMITED OTTAWA ONTARIO	
			SILICON RECTIFIER TRANSFORMER	
			JPC DRAWN	R.W. Thomas ELEC. DES. APP.
			MECH. DES. APP.	
			CHECKED	FINAL APPROVAL
				TF10025

ISSUE	ITEM	CHANGED FROM	DATE	CN. NO.	DRAFTS	CHECKER	ENG. APP.
TOLERANCES							
SCALE: S-401-29							
DRILL, PUNCH, COMMERCIAL STOCK SIZES AND MANUFACTURERS TOLERANCES ARE NOT INCLUDED.							
ALL OTHERS	DEC. DIM. ±	FRAC. DIM. ±	ANGULAR DIM. ±				

CDCS-1	CE 5082		7/11/60
MODEL	PROJECT No.	ASS'Y. No.	DATE
USED ON			