

IF IT IS FOUND DESIRABLE TO CHANGE ANY TOLERANCE OR OTHER DETAIL SPECIFIED ON THIS DRAWING NOTIFY THE PURCHASER PROMPTLY.

MAXIMUM ALLOWABLE TOLERANCES HAVE BEEN DETERMINED AND DEVIATIONS WILL BE CAUSE FOR REJECTION. REMOVE ALL BURRS AND SHARP EDGES

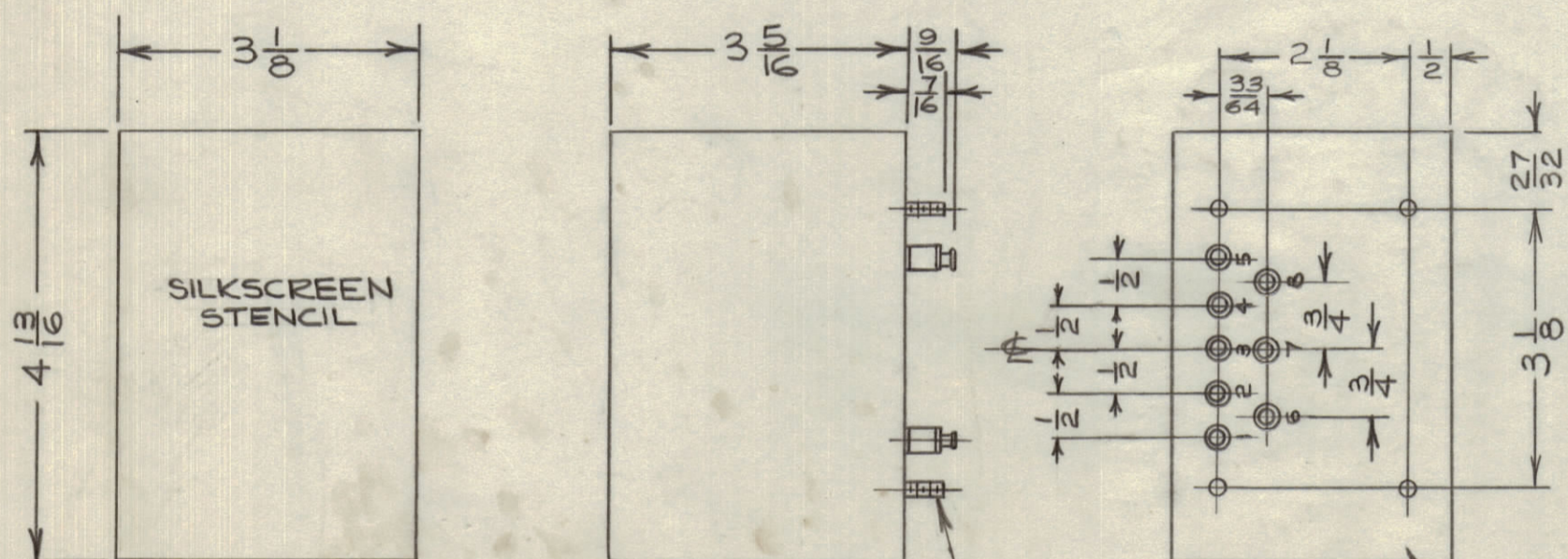
NOTICE TO PERSONS RECEIVING THIS DRAWING

THE TECHNICAL MATERIEL CORPORATION claims proprietary right in the material disclosed hereon. This drawing is issued in confidence for engineering information only and may not be reproduced or used to manufacture anything shown hereon without permission from THE TECHNICAL MATERIEL CORPORATION to the user. This drawing is loaned for mutual assistance and is subject to recall at any time.

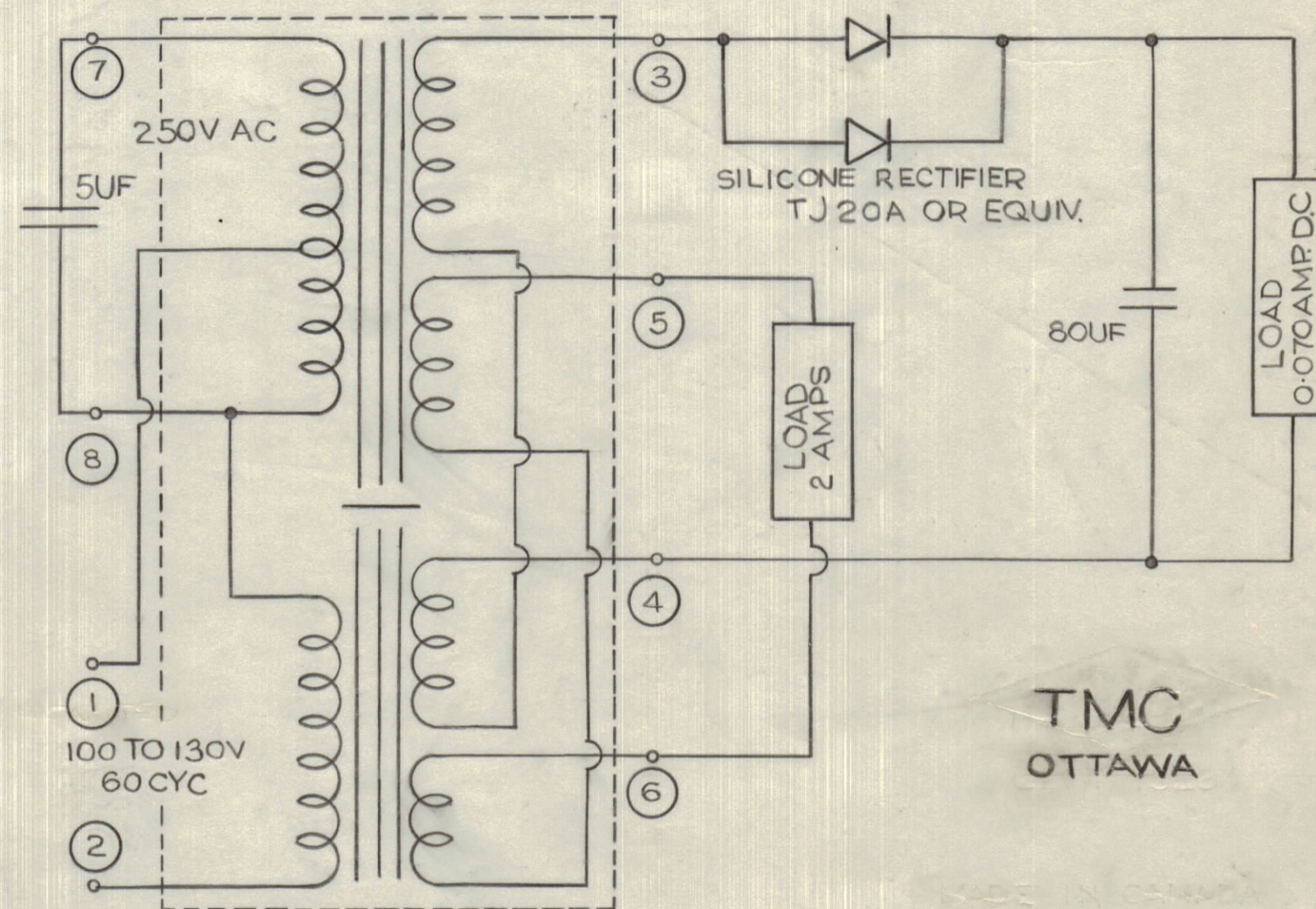
Property of:

THE TECHNICAL MATERIEL CORPORATION
MAMARONECK, NEW YORK

STANDARD DRAWING



FINISH - TMC GREY.
PRIMARY - 115 VOLTS 60 CYC. (100V. MIN. TO 130V MAX.)
SECONDARY - #1 150 VOLTS D.C. @ 70 M.A. D.C.
IN #2 6.3 VOLTS A.C. @ 2.0 AMPS.
INSULATION - CLASS "B".



SILKSCREENING STENCIL
(SCALE 2:1)

TF10003

ISSUE	ITEM	CHANGED FROM	DATE	CN. NO.	DRAFTS	CHECKER	ENG. APP.
TOLERANCES				SCALE:			
ALL OTHERS	DEC. DIM. ±	FRAC. DIM. ±	ANGULAR DIM. ±	DRILL, PUNCH, COMMERCIAL STOCK SIZES AND MANUFACTURERS TOLERANCES ARE NOT INCLUDED.			

BAA-1		9/12/60	
MODEL	PROJECT NO.	ASS'Y. NO.	DATE
USED ON			

REQ.	ITEM	PART NO.	DESCRIPTION	SYMBOL
			TMC (Canada) LIMITED OTTAWA ONTARIO	
STOCK SIZE			POWER TRANSFORMER	
			BAA-1	
MATERIAL			JPC	
WEIGHT PER PC.			DRAWN	ELEC. DES. APP. MECH. DES. APP.
TYPE & TEMPER			M. Ker. M. Ker.	
HEAT TREAT. SPEC.			DCG	
			CHECKED	FINAL APPROVAL
FINISH & SPEC. NO.			TF10003	