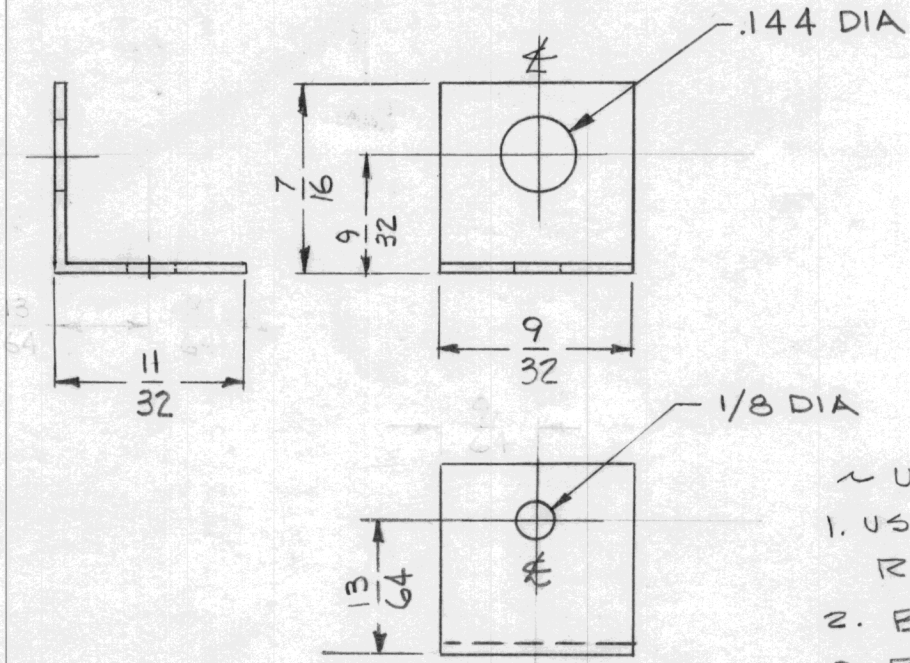


REQ. PER UNIT	USED ON			TE-200
	MODEL	ASS'Y. NO.	DATE	
1	TTR-10	A-3278	9-10-63	

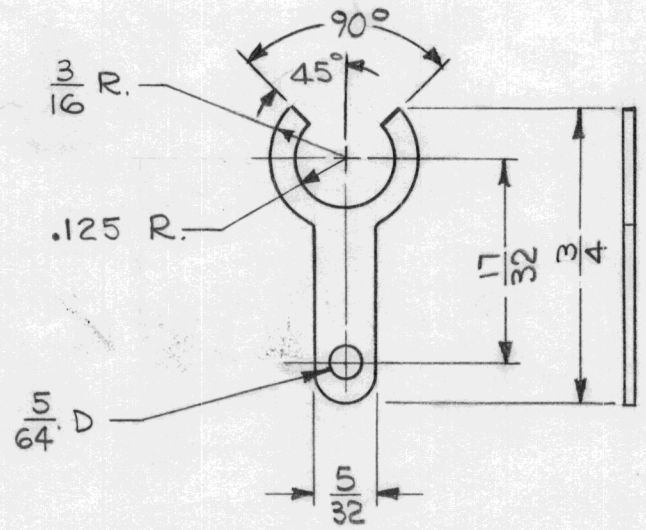


- ~ UNLESS OTHERWISE SPECIFIED ~
1. USE MAT'L THICKNESS FOR MAX. RADIUS ON BEND.
  2. BEND 90°
  3. REMOVE ALL BURS & SHARP EDGES.

REQ.	ITEM	PART NO.	KOHN DESCRIPTION E3037		SYMBOL
		.032 THK	THE TECHNICAL MATERIEL CORP.		
		STOCK SIZE	MAMARONECK. NEW YORK		
		BRASS	BRACKET, ANGLE		
SYM	DESCRIPTION	DATE	CH. NO.	DRAFTS	CHECKER
	UNLESS OTHERWISE SPECIFIED DIMENSIONS ARE IN INCHES AND INCLUDE CHEMICALLY APPLIED OR PLATED FINISHES	SCALE	NONE		
DECIMALS	TOLERANCES	FRACTIONS	CODE	S401-243	
.X ± .05		± 1/64	A	PART # 246	
.XX ± .01		ANGLES			
.XXX ± .005		± 0° 30'			
		1/2 HARD	S105 BRIGHT CADMIUM PLATE		RKOHN
		TYPE & TEMPER	HEAT TREAT. SPEC.	DRAWN	CHECKED
				RKOHN	RKOHN
		FINISH & SPEC. NO.	ELEC. DES. APP.	MECH. DES. APP.	TE-200

REQ. PER UNIT	USED ON		
	MODEL	ASS'Y. NO.	DATE
2	LFS-1	A-3361	10-25-63
2	LFS-1	A-3360	10-25-63
2	LFS-1	A-3359	10-25-63
2	LFS-1	A-3358	10-25-63

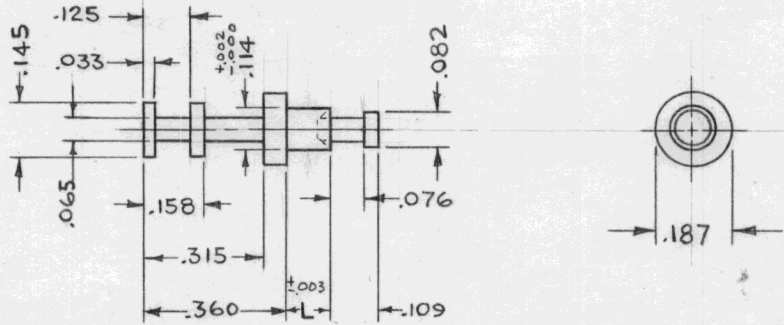
TE 201  $\Phi$



REF. TMC TERM. LUG TE-132 MODIFIED AS SHOWN.

REQ.	ITEM	PART NO.	M. GELLMAN DESCRIPTION			SYMBOL
		.020 THK.	THE TECHNICAL MATERIEL CORP.			
		STOCK SIZE	MAMARONECK, NEW YORK			
		BRASS	TERMINAL, LUG			
		MATERIAL				
$\Phi$	ORIGINAL RELEASE FOR PRODUCTION	7-27-64	$\Phi$	<i>Ben</i>		
SYM	DESCRIPTION	DATE	CH. NO.	DRAFTS	CHECKER	ENG. APP.
UNLESS OTHERWISE SPECIFIED DIMENSIONS ARE IN INCHES AND INCLUDE CHEMICALLY APPLIED OR PLATED FINISHES		SCALE	2:1			
DECIMALS .X $\pm$ .05 .XX $\pm$ .01 .XXX $\pm$ .005		TOLERANCES		FRACTIONS $\pm$ 1/64 ANGLES $\pm$ 0° 30'		CODE A
		TYPE & TEMPER	HEAT TREAT. SPEC.	DRAWN	CHECKED	FINAL APPROVAL
		HOT TINNED		<i>G. Green</i>	@	<i>RAC</i>
		FINISH & SPEC. NO.	ELEC. DES. APP.	MECH. DES. APP.	TE 201 $\Phi$	

TMC PART NO.	MFR. PART NO.	"L" (SHANK)	"T" BOARD THK'NESS	REQ. PER UNIT	USED ON			TE-202	0
					MODEL	ASS'Y. NO.	DATE		
TE-202-1	6503-105-14	.105	1/16		MPS-1		2/26/64		
TE-202-2	6503-135-14	.135	3/32						
TE-202-3	6503-165-14	.165	1/8						

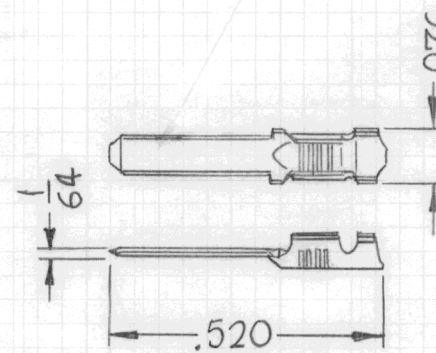


							REQ. ITEM	PART NO.	DESCRIPTION	SYMBOL		
							//		THE TECHNICAL MATERIEL CORP. MAMARONECK, NEW YORK			
							STOCK SIZE		TERMINAL, TURRET TYPE			
0	ORIGINAL RELEASE FOR PRODUCTION	4/20/64	0	A.M.	@		BRASS					
SYM	DESCRIPTION	DATE	CH. NO.	DRAFTS	CHECKER	ENG. APP.	MATERIAL					
UNLESS OTHERWISE SPECIFIED DIMENSIONS ARE IN INCHES AND INCLUDE CHEMICALLY APPLIED OR PLATED FINISHES		SCALE	2:1				//		T. RAMIREZ @ 3-14-64 RJC			
							TYPE & TEMPER	HEAT TREAT. SPEC.	DRAWN	CHECKED	FINAL APPROVAL	
DECIMALS .X ± .05 .XX ± .01 .XXX ± .005	TOLERANCES	FRACTIONS ± 1/64 ANGLES ± 0° 30'	CODE C	S401-89			ELECTROPLATED		TJC		TE-202	0
							FINISH & SPEC. NO.		ELEC. DES. APP.	MECH. DES. APP.		

REQ. PER UNIT	USED ON			TE 203 $\emptyset$
	MODEL	ASS'Y. NO.	DATE	
	RTMU-1		9-28-64	

### SPECIFICATIONS

CURRENT RATING- 5 AMPS  
 TEMPERATURE RANGE- -65 TO +125°C  
 MATERIAL- PHOSPHOR BRONZE (QQ-P-330)  
 PLATING- 0.00003 GOLD (MIL-G-45204)  
           OVER 0.00003 NICKEL (QQ-N-290)  
 VOLTAGE- 1800 VRMS AT SEA LEVEL  
           675 VRMS AT 50,000 FEET  
           450 VRMS AT 70,000 FEET  
 ENGAGING FORCE- 12 OZ. MAX.  
 SEPARATING FORCE- 2 OZ. MAX.  
  
 WIRE RANGE- 26 TO 22 AWG  
 INSULATION RANGE- .040 TO .062  
 USED WITH: JJ312  
 HANDTOOL: MFG PART NUMBER 90090  
 EXTRACTION TOOL: MFG. PART NUMBER 91017-1



### STANDARD DRAWING

REQ.	ITEM	PART NO.	EATON			DESCRIPTION	SYMBOL	
		<del>---</del>	THE TECHNICAL MATERIEL CORP.			MAMARONECK. NEW YORK		
$\emptyset$	ORIGINAL RELEASE FOR PRODUCTION	9-30-64	$\emptyset$	@				
X	EXP. RELEASE	9-28-64	X	SRG	SM		TERMINAL, TAB, CRIMP	
SYM	DESCRIPTION	DATE	CH. NO.	DRAFTS	CHECKER	ENG. APP.	MATERIAL	
UNLESS OTHERWISE SPECIFIED DIMENSIONS ARE IN INCHES AND INCLUDE CHEMICALLY APPLIED OR PLATED FINISHES		SCALE		3:1				
				TYPE & TEMPER		HEAT TREAT. SPEC.	SRG @	RAC
				FINISH & SPEC. NO.		ELEC. DES. APP.	MECH. DES. APP.	TE 203 $\emptyset$
DECIMALS	TOLERANCES	FRACTIONS	CODE	S401-279(66143-2LP)				
.X $\pm$ .05 .XX $\pm$ .01 .XXX $\pm$ .005		$\pm$ 1/64 ANGLES $\pm$ 0° 30'	C					

# STANDARD DRAWING

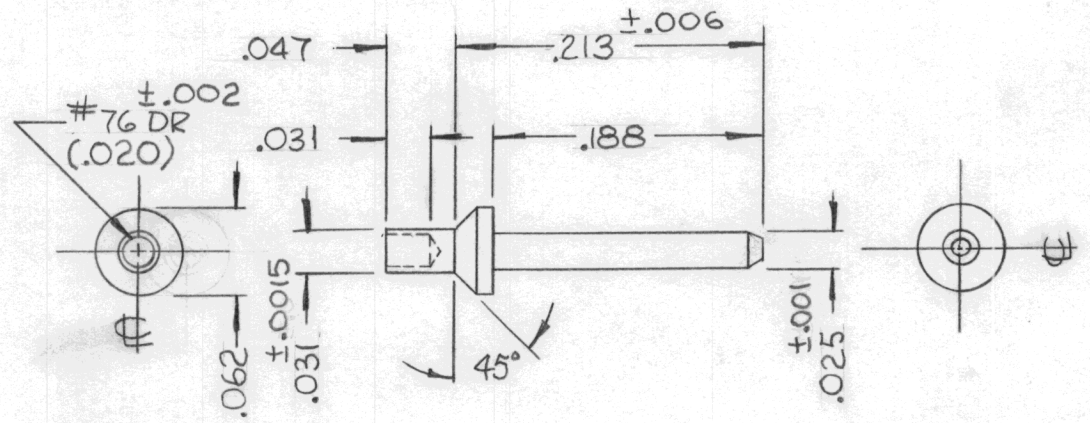
TMC PT/No	MFGR PT/No	FOR BD THK
TE205	3889-1	1/32

REQ. PER UNIT	USED ON	
	MODEL	ASS'Y. NO.
	RTIH	
		DATE
		6.30.66

TE205

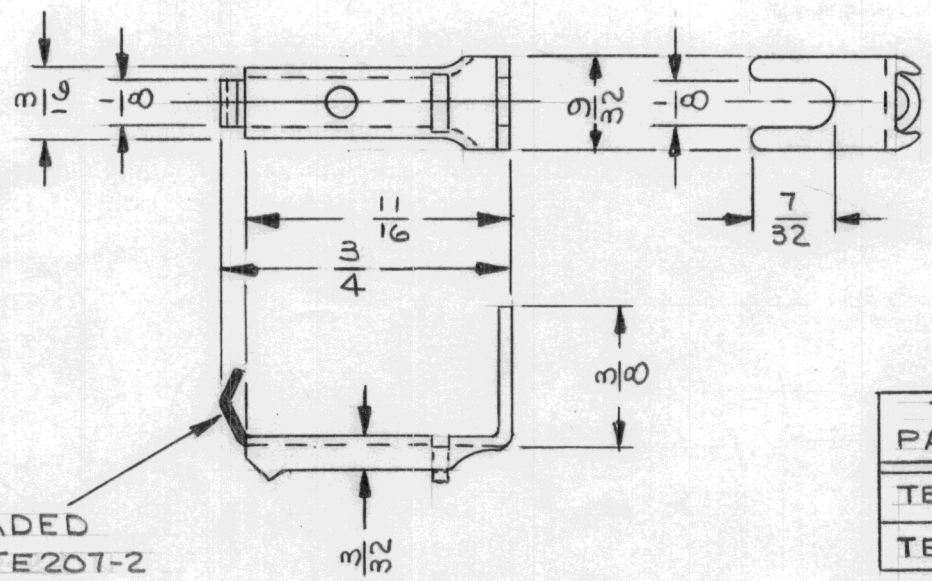
~ NOTE ~

MATERIAL: BRASS  
 FINISH: .000020 24K HARD  
 GOLD PLATE OVER  
 SILVER PLATE .0002



REQ.	ITEM	PART NO.	DESCRIPTION				SYMBOL
			<b>THE TECHNICAL MATERIEL CORP.</b> MAMARONECK, NEW YORK				
			STOCK SIZE				
			SEE NOTES				PIN, TERMINAL
			MATERIAL				
			UNLESS OTHERWISE SPECIFIED DIMENSIONS ARE IN INCHES AND INCLUDE CHEMICALLY APPLIED OR PLATED FINISHES				
			SCALE <b>DO NOT SCALE</b>				
			TYPE & TEMPER HEAT TREAT. SPEC.				
			FINISH & SPEC. NO.				
			DRAWN CHECKED FINAL APPROVAL				
			ELEC. DES. APP. MECH. DES. APP.				
			DECIMALS X $\pm .05$				
			TOLERANCES				
			FRACTIONS $\pm 1/64$ ANGLES $\pm 0^\circ 30'$				
			CODE <b>S401-167</b>				<b>TE205</b>

REQ. PER UNIT	USED ON			TE 207 $\emptyset$
	MODEL	ASS'Y. NO.	DATE	
3	TF351	A4498	9-20-66	



REMOVE SHADED AREA FOR TE207-2 ONLY

TMC PART NO.	DESCRIPTION
TE 207-1	AS SHOWN
TE 207-2	WITHOUT 1/8 TAB

NOTE:  
DIMENSIONS ABOVE ARE FOR REF. ONLY

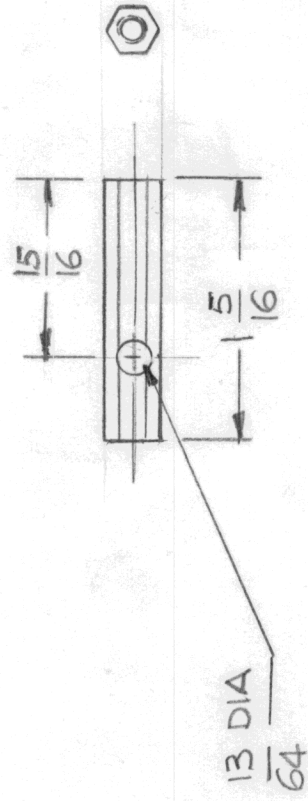
							REQ. ITEM	PART NO.	ROSE	DESCRIPTION	SYMBOL	
							.025 THK		THE TECHNICAL MATERIEL CORP.			
							STOCK SIZE		MAMARONECK. NEW YORK			
$\emptyset$	ORIGINAL RELEASE	10/5/66	$\emptyset$				BRASS		TERMINAL LUG			
X	EXP. RELEASE	9/20/66	JL				MATERIAL					
SYM	DESCRIPTION	DATE	CH. NO.	DRAFTS	CHECKER	ENG. APP.			JL	<i>JCB</i>	<i>M. M. M.</i>	
UNLESS OTHERWISE SPECIFIED DIMENSIONS ARE IN INCHES AND INCLUDE CHEMICALLY APPLIED OR PLATED FINISHES		SCALE	#				TYPE & TEMPER		HEAT TREAT. SPEC.	DRAWN	CHECKED	FINAL APPROVAL
DECIMALS .X $\pm$ .05 .XX $\pm$ .01 .XXX $\pm$ .005	TOLERANCES	FRACTIONS $\pm$ 1/64 ANGLES $\pm$ 0° 30'	CODE	S401-176 (495-03-11-019(101))				CADMIUM PLATE			<i>9/20/66</i>	TE 207 $\emptyset$
							FINISH & SPEC. NO.		ELEC. DES. APP.	MECH. DES. APP.		

APPLICATION

REVISIONS

QTY	MODEL USED ON	ASS'Y NO.	LTR	DESCRIPTION	DATE	E.M.N.NO	DRAFT	CHKD	APPD
-----	---------------	-----------	-----	-------------	------	----------	-------	------	------

1 MMX-4X A5026

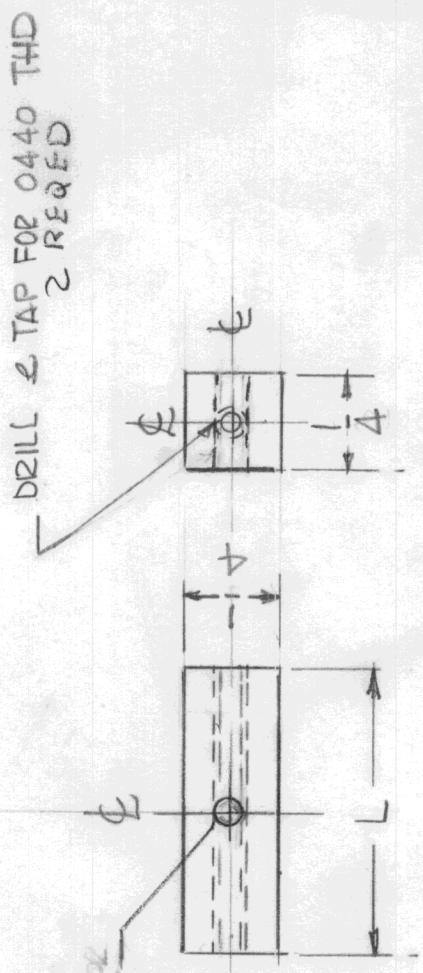


REQ'D	ITEM	PART NUMBER	DESCRIPTION	SYM.
LIST OF MATERIAL				
THE TECHNICAL MATERIEL CORP. MAMARONECK, NEW YORK				
TE0632 SPACER MODIFIED (FSK BD)				
UNLESS OTHERWISE SPECIFIED DIMENSIONS ARE IN INCHES AND INCLUDE CHEMICALLY APPLIED OR PLATED FINISHES				
DECIMALS	FRACTIONS			
.X ± .05	TOLS. 1/64			
.XX ± .01	ANGLES			
.XXX ± .005	0° .30'			
MATERIAL				
ALUM.				
FINISH	#			
	#			
FINAL APPROVAL		DATE		
MECH. DES.		DATE		
ELECT. DES.		DATE		
CHECKED		DATE		
DRAWN G.D.L		DATE 4-26-58		
SIZE	CODE IDENT. NO.	DWG NO.	ISSUE	
A	82679	TE 221		
SCALE 1:1	SHEET	OF		

NOTICE TO PERSONS RECEIVING THIS DRAWING  
THE TECHNICAL MATERIEL CORPORATION claims proprietary right in the material disclosed hereon. This drawing is issued in confidence for engineering information only and may not be reproduced or used to manufacture anything shown hereon without permission from THE TECHNICAL MATERIEL CORPORATION to the user. This drawing is loaned for mutual assistance and is subject to recall at any time.

APPLICATION		REVISIONS							
QTY	MODEL USED ON	ASS'Y NO.	LTR	DESCRIPTION	DATE	E.M.N.NO	DRAFT	CHKD	APPD
1	MMX-4								

TMC P/NO	DIMENSION "L"	REQ'D
TE 220-1	3/4	60
TE 220-2	1/2	10



UNLESS OTHERWISE SPECIFIED DIMENSIONS ARE IN INCHES AND INCLUDE CHEMICALLY APPLIED OR PLATED FINISHES	REQ'D ITEM	PART NUMBER	DESCRIPTION	SYM.
DECIMALS .X ± .05 .XX ± .01 .XXX ± .005 FRACTIONS 1/64 ANGLES 0°-30°	FINAL APPROVAL		LIST OF MATERIAL	
MATERIAL 1/4X1/4 ALUM BAR	MECH. DES.		THE TECHNICAL MATERIEL CORP. MAMARONECK, NEW YORK	
FINISH NIELS404 IRIDITE	ELECT. DES.		SPACERS, THRD	
	CHECKED			
	DRAWN GDL			
	DATE 1-23-81			

SIZE	CODE IDENT. NO.	DWG NO.	ISSUE
A	82679	TE 220-	X
SCALE 2:1	SHEET	OF	

NOTICE TO PERSONS RECEIVING THIS DRAWING  
 THE TECHNICAL MATERIEL CORPORATION claims proprietary right in the material disclosed hereon. This drawing is issued in confidence for engineering information only and may not be reproduced or used to manufacture anything shown hereon without permission from THE TECHNICAL MATERIEL CORPORATION to the user. This drawing is loaned for mutual assistance and is subject to recall at any time.