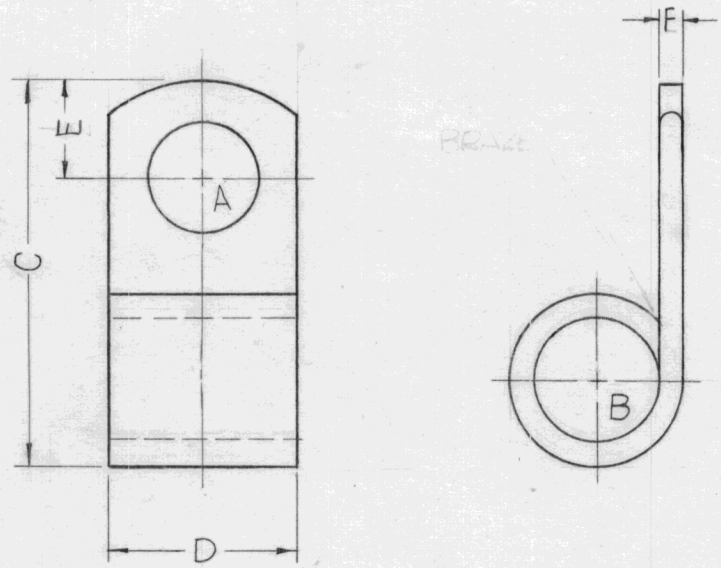


THE CONTENTS OF THIS DRAWING ARE THE EXCLUSIVE PROPERTY OF THE TECHNICAL MATERIEL CORP. ITS UNAUTHORIZED USE FOR REPRODUCTION IN WHOLE OR IN PART IS STRICTLY FORBIDDEN.

REQ. PER UNIT	USED ON			TE-199	A
	MODEL	ASS'Y. NO.	DATE		
	STANDARD		6-21-63		



TMC NO.	MFG. PART NO.	STUD SIZE A	DIMENSIONS				
			B	C	D	E	F
TE-199-1	T&E M 27530	1/2	5/8 MAX	2	1	1/2	1/8

							REQ. ITEM	PART NO.	F. BUDETTI	DESCRIPTION	SYMBOL									
							STOCK SIZE			THE TECHNICAL MATERIEL CORP. MAMARONECK. NEW YORK										
							COPPER			LUG FLAG, SOLDERLESS										
							MATERIAL													
UNLESS OTHERWISE SPECIFIED DIMENSIONS ARE IN INCHES AND INCLUDE CHEMICALLY APPLIED OR PLATED FINISHES							SCALE			SRG aa RDC										
DECIMALS .X ± .05 .XX ± .01 .XXX ± .005							FRACTIONS ± 1/64 ANGLES ± 0° 30'													
TOLERANCES							CODE C	S401-35			TYPE & TEMPER ELECTRO TINNED		HEAT TREAT. SPEC.		DRAWN 208		CHECKED 12/12/63		FINAL APPROVAL	
							FINISH & SPEC. NO.			ELEC. DES. APP.		MECH. DES. APP.		TE-199		A				