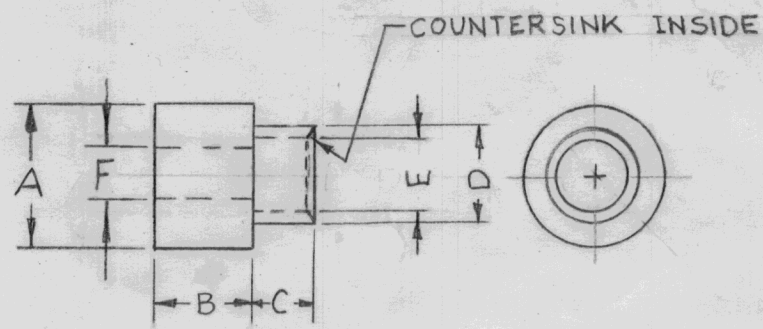


TMC PART NO.	MFG. NO. AMATOM	A (OD)	B	C	D	(E (ID)	F	MTG HOLE	MODEL V/O
TE 184-1	5702	3/8	1/4 ±.005	.165 <sup>+003</sup>	.250 <sup>+002</sup>	.218 <sup>+003</sup> <sub>-001</sub>	.171 <sup>+003</sup>	.257	GPT-40K
TE 184-2		3/8	1/4	.125 <sup>+005</sup>	.225 <sup>+005</sup> <sub>-030</sub>	.189	.189	.234	GPT-40K
TE 184-3		1/4	1/4	.093	.187 <sup>+000</sup> <sub>-001</sub>	.146	.146	.189	GPT-40K

TE184 D



TMC P/N SHALL BE IN THE FOLLOWING FORM.

TE184-2-5

BASIC P/N SIZE FINISH { BLANK - NICKEL PLATE 5135  
S-SILVER PLATE 5245

STANDARD DRAWING

MTG HOLE COL. ADDED.

ISSUE	ITEM	CHANGED FROM	DATE	CH. NO.	DRAFTS	CHECKER	ENG. APP.	REQ.	ITEM	PART NO.	DESCRIPTION	SYMBOL		
D	-	FINISH COL. DELETED BRK'DW. HOLE COL. ADD	1/12/66	15491	R/V	JLB	JC				THE TECHNICAL MATERIEL CORP. MAMARONECK, NEW YORK SPACER, RIVET TYPE	D		
C	2	FINISH & MODEL ADD. TO CHART. C'SINK NOTE WAS CHAMFER INSIDE	5-4-65	13921	SL	JLB	JC							
B	2	MTG. HOLE COL. ADDED	4-26-62	6632	LS	JLB	BP							
B	1	TE-184-2-3 ADDED												
A	1	DWG REVISED	11/2/60	3356	BY	JLB	JB							
TOLERANCES			SCALE: 2-1 (DO NOT SCALE)							1/2 HARD		RUZZO	JLB	JB
DEC. DIM. ± .005 FRAC. DIM. ± 1/64 ANGULAR DIM. ± 30'			MAXIMUM ALLOWABLE TOLERANCES HAVE BEEN DETERMINED AND ANY DEVIATIONS WILL BE CAUSE FOR REJECTION. REMOVE ALL BURRS AND SHARP EDGES							SEE CHART		DRAWN	CHECKED	FINAL APPROVAL
										FINISH & SPEC. NO.		ELEC. DES. APP	MECH. DES. APP	TE 184 D