

IF IT IS FOUND DESIRABLE TO CHANGE ANY TOLERANCE OR OTHER DETAIL SPECIFIED ON THIS DRAWING NOTIFY THE PURCHASER PROMPTLY.

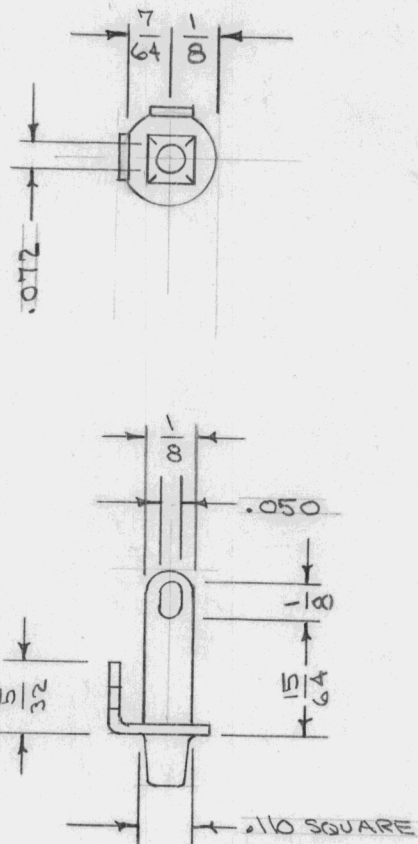
STANDARD DRAWING

TE-145

MAXIMUM ALLOWABLE TOLERANCES HAVE BEEN DETERMINED AND DEVIATIONS WILL BE CAUSE FOR REJECTION. REMOVE ALL BURRS AND SHARP EDGES

USED ON

MODEL	PROJECT NO.	ASS'Y. NO.	DATE
-------	-------------	------------	------



REF: ZIERICK MFG. CO. CAT. NO. 241

REQ.	ITEM	PART NO.	DESCRIPTION	SYMBOL
			THE TECHNICAL MATERIEL CORP. MAMARONECK. NEW YORK	
STOCK SIZE			TERMINAL, EYELET	
BRASS			ANGLE TYPE	
MATERIAL WEIGHT PER PC.				
TYPE & TEMPER			C.D.D. 12-8-54 P.L.K. 1-28-55	
HEAT TREAT. SPEC.			DRAWN ELEC. DES. APP. MECH. DES. APP.	
FINISH & SPEC. NO.			G.T.O.	
			CHECKED FINAL APPROVAL	
			TE-145	

ISSUE	ITEM	CHANGED FROM	DATE	CN. NO.	DRAFTS	CHECKER	ENG. APP.
-------	------	--------------	------	---------	--------	---------	-----------

TOLERANCES

SCALE

ALL OTHERS
DEC. DIM. \pm
FRAC. DIM. \pm
ANGULAR DIM. \pm

DRILL, PUNCH, COMMERCIAL STOCK SIZES AND MANUFACTURERS TOLERANCES ARE NOT INCLUDED.