

IF IT IS FOUND DESIRABLE TO CHANGE ANY TOLERANCE OR OTHER DETAIL SPECIFIED ON THIS DRAWING NOTIFY THE PURCHASER PROMPTLY.

MAXIMUM ALLOWABLE TOLERANCES HAVE BEEN DETERMINED AND DEVIATIONS WILL BE CAUSE FOR REJECTION. REMOVE ALL BURRS AND SHARP EDGES

TE-126  $\emptyset$

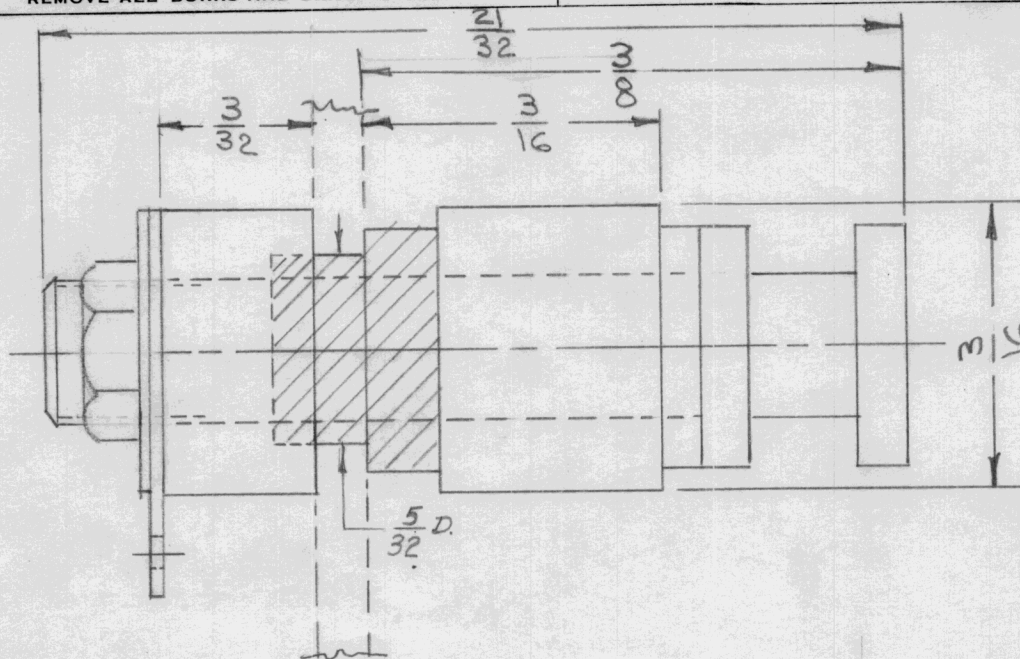
USED ON

MODEL

PROJECT NO.

ASS'Y. NO.

DATE



SPECIFICATIONS

STUD: BRASS, HOT TINNED.  
 INSULATOR: STEATITE, GLAZED, L-3  
 OR BETTER PER SPEC. JAN-1-10  
 WASHER & GLAND: NEOPRENE -60°F TO -225°F  
 LUG, SOLDER: COPPER, TINNED.  
 SPLIT WASHER: PHOSPHOR BRONZE  
 NUT: HEX, BRASS TINNED

REF: HELDOR # 187-A

REQ.	ITEM	PART NO.	DESCRIPTION	SYMBOL
			THE TECHNICAL MATERIEL CORP. MAMARONECK. NEW YORK	
		STOCK SIZE		
		MATERIAL	WEIGHT PER PC.	
				TURRET HEAD BUSHING
		TYPE & TEMPER	NO. 3-553	
		HEAT TREAT. SPEC.		
		FINISH & SPEC. NO.		
				TE-126 $\emptyset$

$\emptyset$	ORIGINAL RELEASE	9/26/69		(W)				
ISSUE	ITEM	CHANGED FROM	DATE	CN. NO.	DRAFTS	CHECKER	ENG. APP.	
		TOLERANCES		SCALE				
ALL OTHERS		DEC. DIM. $\pm$ FRAC. DIM. $\pm$ ANGULAR DIM. $\pm$			DRILL, PUNCH, COMMERCIAL STOCK SIZES AND MANUFACTURERS TOLERANCES ARE NOT INCLUDED.			