

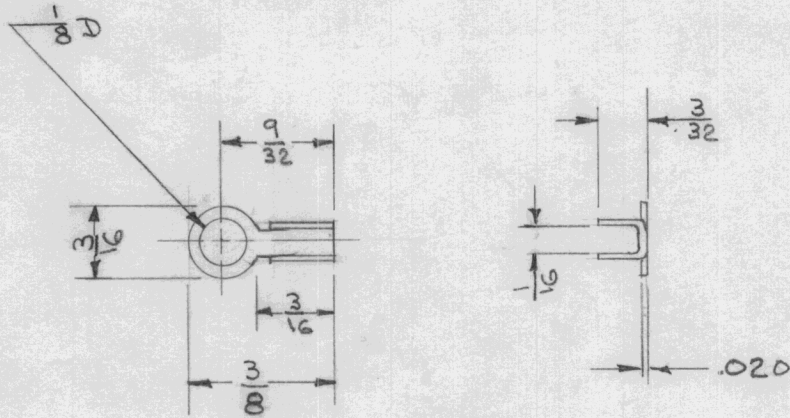
IF IT IS FOUND DESIRABLE TO CHANGE ANY TOLERANCE OR OTHER DETAIL SPECIFIED ON THIS DRAWING NOTIFY THE PURCHASER PROMPTLY.

TE-125

MAXIMUM ALLOWABLE TOLERANCES HAVE BEEN DETERMINED AND DEVIATIONS WILL BE CAUSE FOR REJECTION. REMOVE ALL BURRS AND SHARP EDGES

USED ON

MODEL	PROJECT NO.	ASS'Y. NO.	DATE
			2-12-53



DIMENSIONS FOR REFERENCE ONLY.

REF: PATTON - MAC GUYER CO. * TM50

REQ.	ITEM	PART NO.	DESCRIPTION	SYMBOL
		.020	THE TECHNICAL MATERIEL CORP.	
		STOCK SIZE	MAMARONECK, NEW YORK	
		BRASS	TERMINAL	
		MATERIAL	CORD TIP	
		WEIGHT PER PC.		
		TYPE & TEMPER	DATE 2-16-53	
			DRAWN	ELEC. DES. APP. MECH. DES. APP.
			C.D.D. 2-16-53	
		HEAT TREAT. SPEC.	CHECKED	FINAL APPROVAL
		NICKEL		TE-125
		FINISH & SPEC. NO.		

ISSUE	ITEM	ORIGINAL RELEASE	DATE	CN. NO.	DRAFTS	CHECKER	ENG. APP.
			8/18/69			CU	
TOLERANCES		SCALE		DRILL, PUNCH, COMMERCIAL STOCK SIZES AND MANUFACTURERS TOLERANCES ARE NOT INCLUDED.			
ALL OTHERS	DEC. DIM. ± FRAC. DIM. ± ANGULAR DIM. ±						