

IF IT IS FOUND DESIRABLE TO CHANGE ANY TOLERANCE OR OTHER DETAIL SPECIFIED ON THIS DRAWING NOTIFY THE PURCHASER PROMPTLY.

RELEASED

STANDARD DRAWING

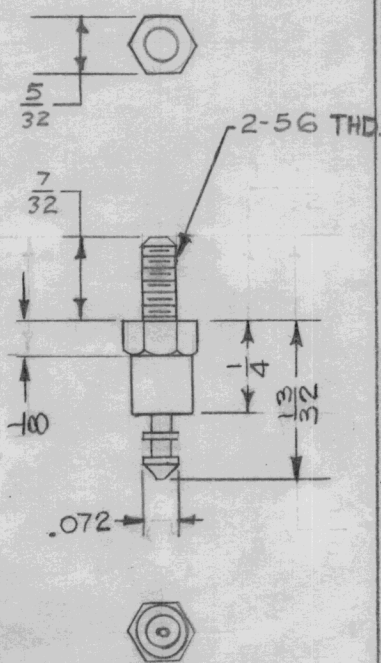
TE-115-

B

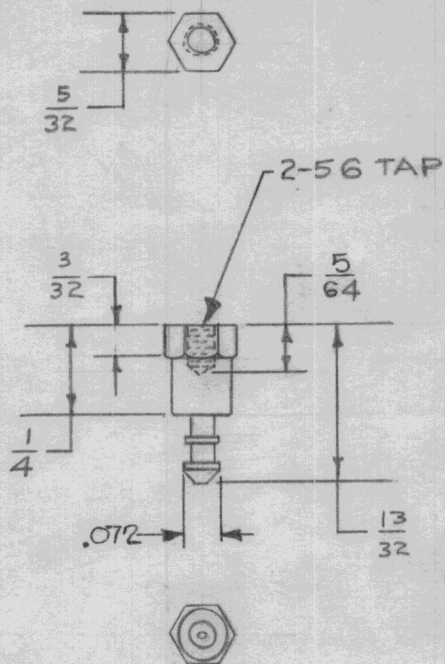
MAXIMUM ALLOWABLE TOLERANCES HAVE BEEN DETERMINED AND DEVIATIONS WILL BE CAUSE FOR REJECTION. REMOVE ALL BURRS AND SHARP EDGES

USED ON

MODEL	PROJECT NO.	ASS'Y. NO.	DATE
FFRD-5	104	A-229	12-31-52
FFRD-6	104	A-229	12-31-52
FFRD-7	104	A-229	12-31-52
FFRD-8	104	A-229	12-31-52



TE-115-1



TE-115-2

TMC NO.	MFG. NO.
TE-115-1	4D5-A1
TE-115-2	4D4-A1

MATERIAL

BODY: MOLDED MELAMINE, MINERAL FILLED PER MIL P-14A TYPE MME, MELMAC #592 OR EQUIV.
 TERMINAL: BRASS, HOT SOLDER DIP
 MOUNTING: BRASS, CAD PLATED

DIM. FOR REF. ONLY

REF: WHITSO CO.

REQ.	ITEM	PART NO.	DESCRIPTION	SYMBOL
			THE TECHNICAL MATERIEL CORP.	
			MAMARONECK, NEW YORK	
			TERMINAL TURRET	
			MIDGET TYPE	
			15 12-30-52	
			DRAWN	
			ELEC. DES. APP.	
			MECH. DES. APP.	
			CHECKED	
			FINAL APPROVAL	
			TE-115-	B

ISSUE	ITEM	CHANGED FROM	DATE	CN. NO.	DRAFTS	CHECKER	ENG. APP.
B	1	REVISED TO MFR. SPECS	4.29.50	8877			
A	1	MST-103-A-1 WAS MS-103-A-1	1-12-55	1			

TOLERANCES	SCALE	DRILL, PUNCH, COMMERCIAL STOCK SIZES AND MANUFACTURERS TOLERANCES ARE NOT INCLUDED.
ALL OTHERS DEC. DIM. ± FRAC. DIM. ± ANGULAR DIM. ±		