

IF IT IS FOUND DESIRABLE TO CHANGE ANY TOLERANCE OR OTHER DETAIL SPECIFIED ON THIS DRAWING NOTIFY THE PURCHASER PROMPTLY.

STANDARD DRAWING

TE-112

MAXIMUM ALLOWABLE TOLERANCES HAVE BEEN DETERMINED AND DEVIATIONS WILL BE CAUSE FOR REJECTION. REMOVE ALL BURRS AND SHARP EDGES

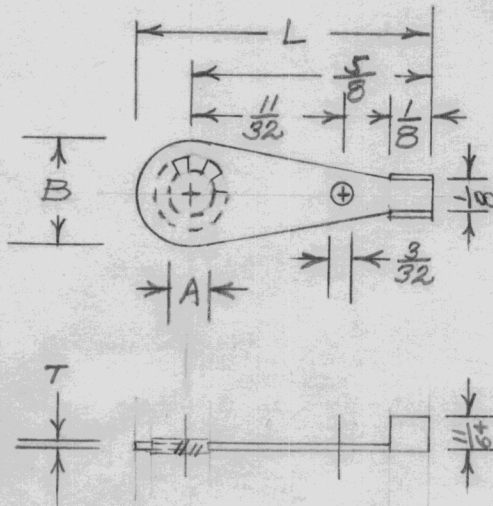
USED ON

MODEL

PROJECT NO.

ASS'Y. NO.

DATE



TMC No.	Cat. No.	Screw Size	A	B	L	T
TE-112-1	2108-04-00	4	.123-.116	5/16	25/32	.018
TE-112-2	2108-06-00	6	.150-.142	5/16	25/32	.018
TE-112-3	2108-08-00	8	.176-.168	5/16	25/32	.018
TE-112-4	2108-10-00	10	.204-.195	11/32	51/64	.018

Ref. Shakerproof Inc.

REQ.	ITEM	PART NO.	DESCRIPTION	SYMBOL
		— H —	THE TECHNICAL MATERIEL CORP. MAMARONECK, NEW YORK	
		STOCK SIZE		
		Phos. Bronze	TERMINAL-LOCKING CRIMP TYPE	
		— H —		
		MATERIAL		
		WEIGHT PER PC.		
		— H —		
		TYPE & TEMPER		
		— H —		
		HEAT TREAT. SPEC.		
		Hot Solder Dip		
		FINISH & SPEC. NO.		

ISSUE	ITEM	CHANGED FROM	DATE	CN. NO.	DRAFTS	CHECKER	ENG. APP.
-------	------	--------------	------	---------	--------	---------	-----------

TOLERANCES

SCALE

ALL OTHERS
DEC. DIM. ±
FRAC. DIM. ±
ANGULAR DIM. ±

DRILL, PUNCH, COMMERCIAL STOCK SIZES AND MANUFACTURERS TOLERANCES ARE NOT INCLUDED.

DRAWN

ELEC. DES. APP.

MECH. DES. APP.

CHECKED

FINAL APPROVAL

TE-112