

IF IT IS FOUND DESIRABLE TO CHANGE ANY TOLERANCE OR OTHER DETAIL SPECIFIED ON THIS DRAWING NOTIFY THE PURCHASER PROMPTLY.

STANDARD DRAWING

TE-102 C

MAXIMUM ALLOWABLE TOLERANCES HAVE BEEN DETERMINED AND DEVIATIONS WILL BE CAUSE FOR REJECTION.
REMOVE ALL BURRS AND SHARP EDGES

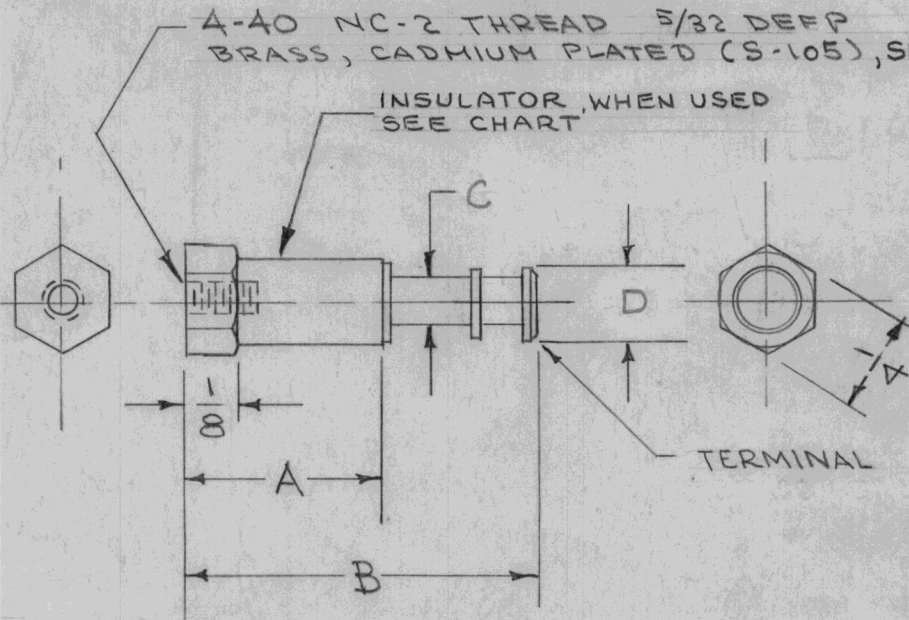
USED ON

MODEL PROJECT NO. ASS'Y. NO. DATE

MFG. CODE	T.M.C. NO.	MFG. NO	A	B	C	D	INSULATING MAT'L	TERM. MATERIAL
A	TE-102-1	3B1-A1	17/32	27/32	3/32	.180	MOLDED MELAMINE MINERAL FILLED	BRASS, HOT SOLDER DIPPED
A	TE-102-2	3A1-A1	3/8	11/16	3/32	.180	MOLDED MELAMINE MINERAL FILLED	BRASS, HOT SOLDER DIPPED
B	TE-102-3	2381-1	3/8	23/32	5/64	.140	NON INSULATED BRASS, HOT TIN DIPPED	BRASS, HOT TIN DIPPED

A-40 NC-2 THREAD 5/32 DEEP
BRASS, CADMIUM PLATED (S-105), SEE NOTE.

INSULATOR, WHEN USED
SEE CHART



MATERIAL: SEE CHART

1. INSULATOR TO BE PER MIL-P-14A, TYPE MME, MELMAC #592 OR EQUIV.
2. THREAD MATERIAL AS SHOWN ONLY FOR INSULATED TYPE.
3. FLASH OVER VOLTAGE OF INSULATED TYPE: 17 KV NOMINAL

A S401-309

B S401-167

REQ.	ITEM	PART NO.	DESCRIPTION	SYMBOL
		#	THE TECHNICAL MATERIEL CORP.	
			MAMARONECK, NEW YORK	
		STOCK SIZE		
		#	TERMINAL, TURRET	
		MATERIAL		
		WEIGHT PER PC.		
		TYPE & TEMPER	C.D.D. 6-29-54	G.T.O
			DRAWN	ELEC. DES. APP.
			CHECKED	MECH. DES. APP.
		HEAT TREAT. SPEC.		
		FINISH & SPEC. NO.		
			FINAL APPROVAL	
			TE-102	C

ISSUE	ITEM	CHANGED FROM	DATE	CN. NO.	DRAFTS	CHECKER	ENG. APP.
C		CHART, SPECS & PICT. REVISED	6-7-66	16353	N.C.	Q/B	
B	1	CHART & SPECS REVISED	8-4-64	12021	WB	@	
A	1	REVISED TO MFR SPEC	4-29-63	8877	E	JAY	
#	#	REDRAWN - NO CHANGE			CSD	JAY	

TOLERANCES	SCALE	DRILL, PUNCH, COMMERCIAL STOCK SIZES AND MANUFACTURERS TOLERANCES ARE NOT INCLUDED.
ALL OTHERS DEC. DIM. ± .015 FRAC. DIM. ± 1/64 ANGULAR DIM. ±	#	