

IF IT IS FOUND DESIRABLE TO CHANGE ANY TOLERANCE OR OTHER DETAIL SPECIFIED ON THIS DRAWING NOTIFY THE PURCHASER PROMPTLY.

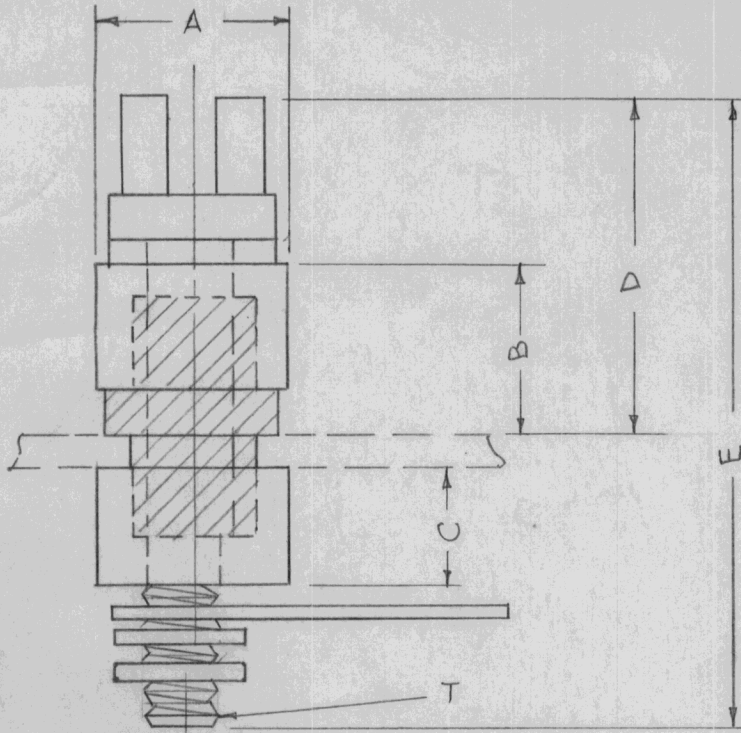
STANDARD DRAWING

TE-101

MAXIMUM ALLOWABLE TOLERANCES HAVE BEEN DETERMINED AND DEVIATIONS WILL BE CAUSE FOR REJECTION. REMOVE ALL BURRS AND SHARP EDGES

USED ON

MODEL PROJECT NO. ASS'Y. NO. DATE



TMC NO.	CAT NO.	A	B	C	D	E	T	VOLTS RMS	AMPS	MTG. HOLE DIGM.	PANEL THICKNESS	TIGHT-ENING TORQUE	SPACING CENTER TO CENTER
TE-101-1	250-D	1/4	9/64	7/64	23/64	13/16	4-40	2,000	10	11/64	.037 MAX. .020 MIN.	1" #	.375
TE-101-2	312-A	5/16	7/32	5/32	7/16	29/32	4-40	4,000	10	7/32	.037 MAX. .020 MIN.	1 1/4" #	.500
TE-101-3	375-B	3/8	5/16	1/4	23/32	13/8	6-32	5,000	20	17/64	.048 MAX. .025 MIN.	4" #	.625
TE-101-4	375-A	3/8	7/16	1/4	23/32	13/8	6-32	6,000	20	17/64	.040 MAX. .025 MIN.	4" #	.625
TE-101-5	500-D	1/2	13/16	1/4	7/32	17/8	6-32	7,000	20	17/64	.048 MAX. .025 MIN.	4" #	.750

BUSHING INSTALLATION PROCEDURE

- 1-BE CERTAIN THAT HOLES ARE FREE FROM BURRS.
- 2-INSERT STUD, WASHER, TOP STEATITE AND GLAND THROUGH TOP OF PANEL.
- 3-ASSEMBLE BOTTOM PARTS, RUNNING THE NUT UP FINGER TIGHT.
- 4-USING A TORQUE WRENCH, SET THE NUT TO THE RECOMENDED TORQUE.
- 5-LET COVER ASSEMBLY BE STOROD FOR 24 hrs. OR LONGER
- 6-RESET THE NUT TO THE RECOMMENDED TORQUE

NOTE: FOR LOCATION OF TERMINALS SEE BX-100

REF. HELDOR BUSHING & TERMINAL CO., INC

SPECIFICATIONS:

STUD: BRASS, HOT-TINNED.
 INSULATOR: STEATITE, GLAZED, L-3 OR BETTER PER SPECIFICATION JAN-I-10,
 WASHER & GLAND: NEOPRENE-60°F TO-225°F
 LUG, SOLDER: COPPER, TINNED.
 SPLIT WASHER: PHOSPHOR. BRONZE.
 NUT: HEX, BRASS, TINNED.

REQ.	ITEM	PART NO.	DESCRIPTION	SYMBOL
		11	THE TECHNICAL MATERIEL CORP. MAMARONECK. NEW YORK	
		STOCK SIZE		
		11	SLOTTED HEAD BUSHING	
		MATERIAL		
		WEIGHT PER PC.		
		11	P.B. 9-17-54	
		TYPE & TEMPER		
		11	DRAWN	ELEC. DES. APP. MECH. DES. AP
		HEAT TREAT. SPEC.		
		11	CHECKED	FINAL APPROVAL
		FINISH & SPEC. NO.		TE-101

#	1	REDRAWN - NO REVISION	10/25/54	1	J. H. H.	W. E.
ISSUE	ITEM	CHANGED FROM	DATE	CN. NO.	DRAFTS CHECKER	ENG. APP.

TOLERANCES		SCALE
ALL OTHERS	DEC. DIM. ± FRAC. DIM. ± ANGULAR DIM. ±	DRILL, PUNCH, COMMERCIAL STOCK SIZES AND MANUFACTURERS TOLERANCES ARE NOT INCLUDED.