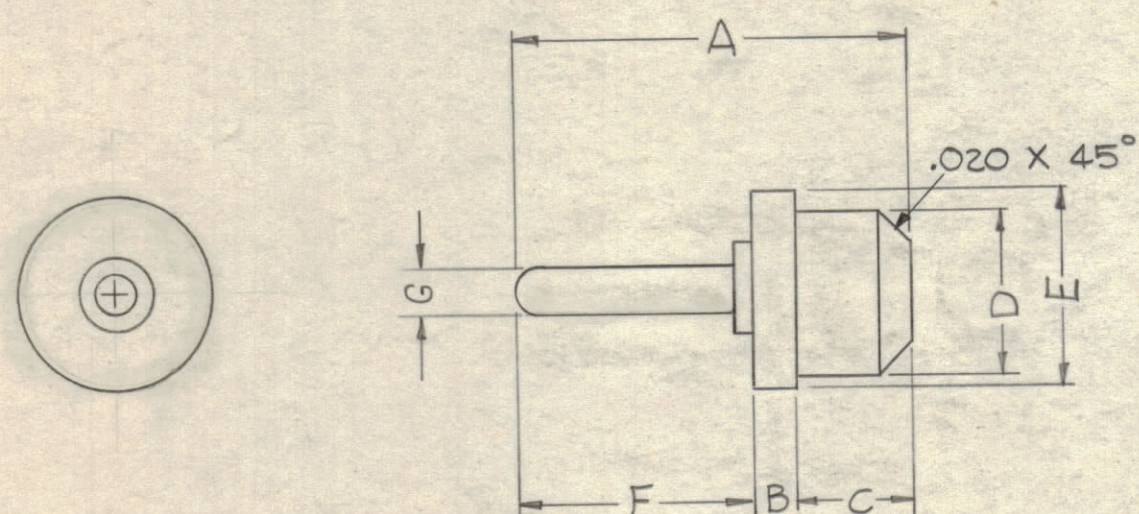


TMC PART NO.	TRI-POINT PART NO. (See Note 1)	MINIMUM VOLTAGE		MAXIMUM CAPACITANCE uuf		A	B	C	D	E	F	G	SEAELECTRO PART NO. (See Note 2)
		Sea Level	50,000 Feet	Chassis .074	Thick .050								
TE-189-1	S-130		1060	.41	.50	.350	.040	.100	.148	.172	.210	.040	ST-SM-1 (Reverse is Available)
TE-189-2	S-131	2720	1100	.33	.50	.375	.050	.110	.148	.172	.210	.040	ST-SM-2C4 (Not Available in Reverse)
TE-189-3	S-132	2550	1060	.40	.40	.350	.040	.100	.172	.195	.210	.040	ST-SM-3 (Not Available in Reverse)
TE-189-4	S-133	2630	1060	.35	.40	.350	.040	.100	.179	.200	.210	.040	ST-SM-4 (Not Available in Reverse)
TE-189-5	S-134	2800	1060	.41	.35	.350	.040	.100	.218	.250	.210	.040	ST-SM-5 (Reverse is Available)
TE-189-6	S-135				.35	.345	.060	.075	.148	.172	.210	.040	ST-SM-6 (Reverse is Available)
TE-189-7	S-136	2380	850	.47	.55	.370	.040	.120	.148	.172	.210	.040	ST-SM-8 (Not Available in Reverse)
TE-189-8	S-137	3320	1275	.31	.50	.350	.078	.062	.148	.172	.210	.040	ST-SM-15 (Not Available in Reverse)
TE-189-9	S-140	2720	975	.39	.50	.406/.410	.040	.156/.160	.148	.172	.210	.040	ST-SM-1C2 (Not Available in Reverse)
TE-189-10	S-150	2550	1060	.32	.50	.500	.040	.250	.148	.172	.210	.040	ST-SM-1C6 (Reverse is Available)

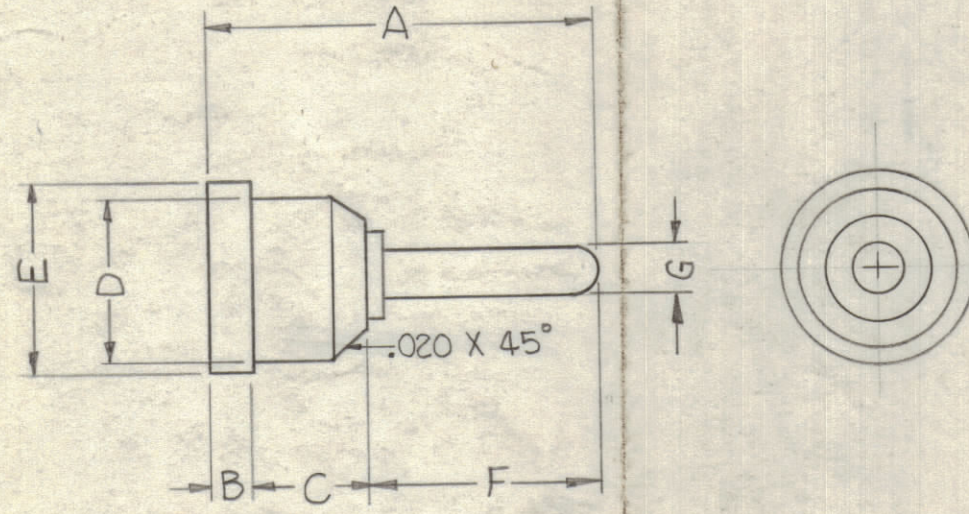
NOTES:

1. ADD "R" TO MANUFACTURER'S NUMBER FOR REVERSE CONSTRUCTION (S-130R).
2. ADD "R" TO FRONT OF MANUFACTURER'S NUMBER FOR REVERSE CONSTRUCTION (RST-SM-1).
3. ADD COLOR CODE SUFFIX FOR COLOR REQUIRED (SEE CHART).

* SPECIFICATIONS - 100% VIRGIN TEFLON BODY
 TERMINAL - BRASS, SILVER-PLATED (.0003 MIN.)

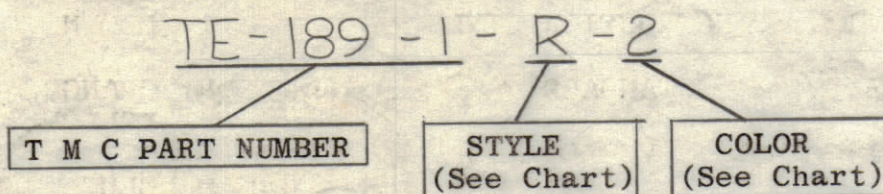


STANDARD CONSTRUCTION



REVERSE CONSTRUCTION

NOMENCLATURE SHALL BE AS FOLLOWS:



SYMBOL	CONSTRUCTION STYLE
S	STANDARD
R	REVERSE

COLOR CHART	
0	BLACK
1	BROWN
2	RED
3	ORANGE
4	YELLOW
5	GREEN
6	BLUE
7	VIOLET
8	GRAY
9	WHITE

SYMBOL	ZONE	DESCRIPTION	DATE	CH. NO.	DRAFTS	CHECKER	ENG. APP.
A		REDRAWN & REVISED FROM 2-SIZE	4-17-62	6413	BT	HWB	BP
UNLESS OTHERWISE SPECIFIED:			SCALE				
DIMENSIONS ARE IN INCHES			MAXIMUM ALLOWABLE TOLERANCES HAVE BEEN DETERMINED AND ANY DEVIATIONS WILL BE CAUSE FOR REJECTION. REMOVE ALL BURRS & SHARP EDGES				
TOLERANCES ON FRACTIONS ± 1/64			DECIMALS ± .005		ANGLES ± 1/2°		

REQ. PER UNIT	MODEL	SECTION	ASS'Y. NO.	DATE

REQ. ITEM	PART NO.	DESCRIPTION	SYMBOL
		THE TECHNICAL MATERIEL CORP. MAMARONECK, NEW YORK	
		STOCK SIZE	
		* SEE NOTE	
		MATERIAL	
		TERMINAL, SUB-MINIATURE STAND-OFF	
		TYPE & TEMPER	
		HEAT TREAT. SPEC.	
		FINISH & SPEC. NO.	
		ELEC. DES. APP.	
		MECH. DES. APP.	
		SHEET OF	
		TE-189	A