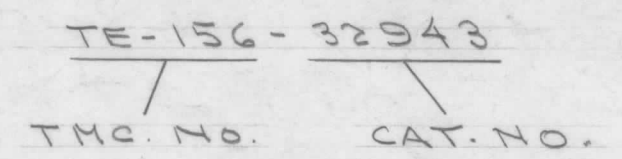


TE-156 B

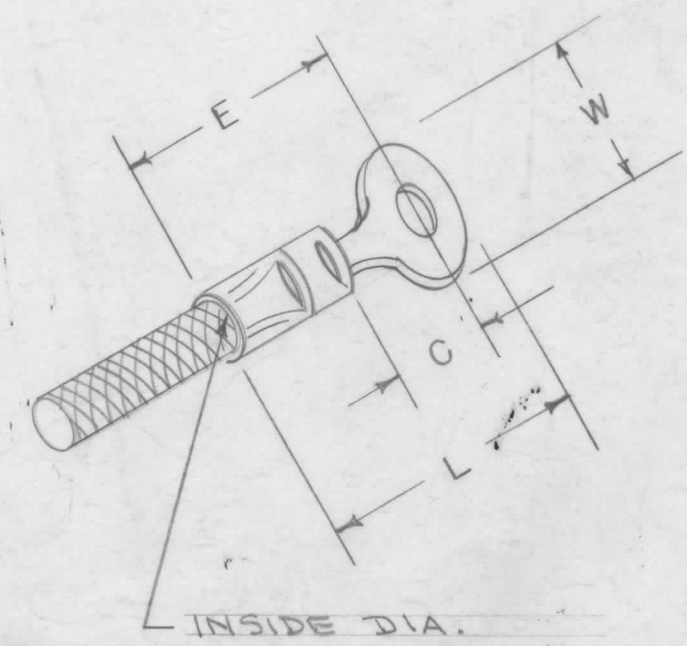
T.M.C. NO.	STUD	E	L	C	W	INS. DIA.
T.M.C. CAT	SIZE	(MAX)	(MAX)	STUD CLEAR. (MIN)	TONGUE WIDTH	
TE-156-32943	2	35/64	21/32	5/32	7/32	.080 TO .120
-34140	2	"	"	"	"	.105 TO .140
-32944	3OR4	"	"	"	"	.080 TO .120
-34141	"	"	"	"	"	.105 TO .140
-32946	"	41/64	25/32	1/4	9/32	.080 TO .120
-34143	"	"	"	"	"	.105 TO .140
-32945	5OR6	35/64	21/32	5/32	7/32	.080 TO .120
-34142	"	"	"	"	"	.105 TO .140
-32947	"	41/64	"	1/4	9/32	.080 TO .120
-34144	"	"	"	"	"	.105 TO .140
-32950	"	43/64	53/64	9/32	5/16	.080 TO .120
-34147	"	"	"	"	"	.105 TO .140
-32951	8	"	"	"	"	.080 TO .120
-34148	"	"	"	"	"	.105 TO .140
-32948	"	41/64	25/32	1/4	9/32	.080 TO .120
-34145	"	"	"	"	"	.105 TO .140
-32952	10	43/64	53/64	9/32	5/16	.080 TO .120
-34149	"	"	"	"	"	.105 TO .140
-32949	"	41/64	25/32	1/4	9/32	.080 TO .120
-34146	"	"	"	"	"	.105 TO .140
-32953	12OR14	53/64	11/16	27/64	15/32	.080 TO .120
-34150	"	"	"	"	"	.105 TO .140
-32954	5/16	"	"	"	"	.080 TO .120
-34151	"	"	"	"	"	.105 TO .140
-32955	3/8	15/16	113/64	17/32	17/32	.080 TO .120
-34152	"	"	"	"	"	.105 TO .140

STANDARD DRAWING

TYPE DESIGNATION TO BE IN FOLLOWING FORM



FOR WIRE SIZES - 22 - 16



NOTICE TO PERSONS RECEIVING THIS DRAWING
 THE TECHNICAL MATERIEL CORPORATION claims
 proprietary right in the material disclosed hereon.
 This drawing is issued in confidence for engineering
 information only and may not be reproduced or used
 to manufacture anything shown hereon without per-
 mission from THE TECHNICAL MATERIEL CORPORA-
 TION to the user. This drawing is loaned for mutual
 assistance and is subject to recall at any time.

Property of:
 THE TECHNICAL MATERIEL CORPORATION
 MAMARONECK, NEW YORK

REF: AIRCRAFT MARINE PRODUCTS INC.

ISSUE	ITEM	CHANGED FROM	DATE	CH. NO.	DRAFTS	CHECKER	ENG. APP.
B	1	12OR14 WAS 12OR14	10/11/56	2	000	JAVE	[Signature]
A	1	COMPLETE REVISION	9/5/56	1	000	JAVE	[Signature]

TOLERANCES: DEC. DIM. ±, FRAC. DIM. ±, ANGULAR DIM. ±

SCALE: MAXIMUM ALLOWABLE TOLERANCES HAVE BEEN DETERMINED AND ANY DEVIATIONS WILL BE CAUSE FOR REJECTION. REMOVE ALL BURRS AND SHARP EDGES

REQ. PER UNIT	MODEL	PROJECT NO.	ASS'Y. NO.	DATE

USED ON

REQ. ITEM	PART NO.	DESCRIPTION	SYMBOL
		THE TECHNICAL MATERIEL CORP. MAMARONECK, NEW YORK	
STOCK SIZE		SOLDERLESS TERMINAL	
MATERIAL		"PLASTI GRIP"	
		CDR 2/5/56	JAVE
			A.J.J.
TYPE & TEMPER		HEAT TREAT. SPEC.	DRAWN
			CHECKED
			FINAL APPROVAL
			[Signature]
			[Signature]
FINISH & SPEC. NO.		ELEC. DES. APP.	MECH. DES. APP.
			TE-156 B