

| CODE | LENGTH (Inches) | DIMENSION (Inches) | DIMENSION OR DIAMETER OR ACROSS FLATS |
|------|-----------------|--------------------|---------------------------------------|
| 1 | 3-1/2 | 5/8 | |
| 2 | 10-5/16 | 5/8 | |
| 3 | 3/8 | 7/16 | |
| 4 | 4-3/16 | 7/16 | |
| 5 | 1/2 | 3/4 | |
| 6 | 1-5/8 | 1/4 | |
| 7 | 4-3/8 | 3/8 | |
| 8 | 2-11/16 | 1/4 | |
| 9 | 2-15/16 | 3/8 | |
| 10 | 2 | 5/8 | |
| 11 | 1-15/16 | 3/8 | |
| 12 | 2-1/16 | 3/8 | |
| 13 | 4-1/2 | 3/8 | |
| 14 | 2-1/8 | 5/16 | |
| 15 | 7 | 1/2 | |
| 16 | 4 | 3/4 | |
| 17 | 2-3/4 | 3/4 | |
| 18 | 2-1/16 | 1/4 | |
| 19 | 15/16 | 3/8 | |
| 20 | 2-7/8 | 3/8 | |
| 21 | 3-5/8 | 1-1/2 | |
| 22 | 3-3/16 | 3/8 | |
| 23 | 2-5/8 | 5/16 | |
| 24 | 1-3/4 | 3/4 | |
| 25 | 5-1/4 | 3/4 | |
| 26 | 11/16 | 3/4 | |
| 27 | 2 | 1 | |
| 28 | 2-7/16 | 3/8 | |
| 29 | 1 | 1/2 | |
| 30 | 1-3/16 | 3/4 | |
| 31 | 1 | 3/4 | |
| 32 | 2-9/16 | 1/4 | |
| 33 | 4-7/8 | 5/8 | |
| 34 | 7-1/8 | 5/8 | |
| 35 | 2-5/8 | 1/4 | |
| 36 | 2-11/16 | 3/8 | |
| 37 | 5-1/2 | 1 | |
| 38 | 2-9/16 | 3/8 | |
| 39 | 4-1/2 | 1/2 | |
| 40 | 2-9/16 | 3/4 | |
| 41 | 3-5/8 | 3/4 | |
| 42 | 2 | 3/8 | |
| 43 | 1-1/4 | 5/16 | |
| 44 | 2-1/4 | 1 | |
| 45 | 1-11/16 | 3/8 | |
| 46 | 3/8 | 3/8 | |
| 47 | 4-7/16 | 3/8 | |
| 48 | 1-3/16 | 1/4 | |
| 49 | 5-1/8 | 1/2 | |
| 50 | 1-7/16 | 5/8 | |
| 51 | 13/16 | 1/2 | |
| 52 | 1/8 | 1/4 | |
| 53 | 1-3/4 | 3/4 | |
| 54 | 1/2 | 3/8 | |
| 55 | 1-3/4 | 5/8 | |
| 56 | 13/16 | 1/4 | |
| 57 | 3/4 | 3/8 | |
| 58 | 7/8 | 1/4 | |
| 59 | 2-5/16 | 3/4 | |
| 60 | 1.875 | 3/8 | |
| 61 | .937 | 3/8 | |
| 62 | 3/4 | 3/4 | |
| 63 | 2-27/32 | 3/8 | |
| 64 | 1-1/2 | 3/8 | |
| 65 | .750 +.005 | 3/8 | |
| 66 | 1.218 +.005 | 3/8 | |
| 67 | 1.546 +.005 | 3/8 | |
| 68 | .687 | 3/8 | |
| 69 | 3/8 | 1/4 | |
| 70 | 2-3/8 | 1/4 | |
| 71 | 1-1/4 | 1/2 | |
| 72 | 1/2 | 1/2 | |
| 73 | 4 | 1/2 | |
| 74 | 2-1/4 | 1/2 | |

| SIZE CHART | LENGTH (Inches) | DIMENSION (Inches) | DIMENSION OR DIAMETER OR ACROSS FLATS |
|------------|-----------------|--------------------|---------------------------------------|
| 75 | 2 7/16 | 1/4 | |
| 76 | 2 3/16 | 1/2 | |
| 77 | .572 ± .005 | 3/16 | |
| 78 | 2.187 ± .002 | 3/8 | |
| 79 | 1.5/8 | 3/16 | |
| 80 | 1 | 3/16 | |
| 81 | 1 15/16 | 3/16 | |
| 82 | 1 1/8 | 1/4 | |
| 83 | 5/8 | 1/4 | |
| 84 | 2 1/4 | 1/4 | |
| 85 | 3 | 3/16 | |
| 86 | .541 ± .005 | 5/16 | |
| 87 | 1 | 1/4 | |
| 88 | 5/8 | 3/8 | |
| 89 | 1.250 ± .002 | 3/8 | |
| 90 | .718 ± .005 | 1" | |
| 91 | .718 ± .005 | 3/8 | |
| 92 | 1-1/8 | 3/8 | |
| 93 | .812 ± .002 | 5/16 | |
| 94 | 2-1/4 | 3/16 | |
| 95 | .500 ± .005 | 1/4 | |
| 96 | 4-3/4 | 3/8 | |
| 97 | 7 | 5/16 | |
| 98 | 3-3/4 | 3/16 | |
| 99 | 2-3/4 | 3/16 | |
| 100 | 3-1/4 | 3/16 | |
| 101 | 2.187 ± .002 | 5/16 | |
| 102 | 2 1/4 | 3/16 | |
| 103 | 1.125 ± .002 | 5/16 | |

STANDARD DRAWING

NOTES

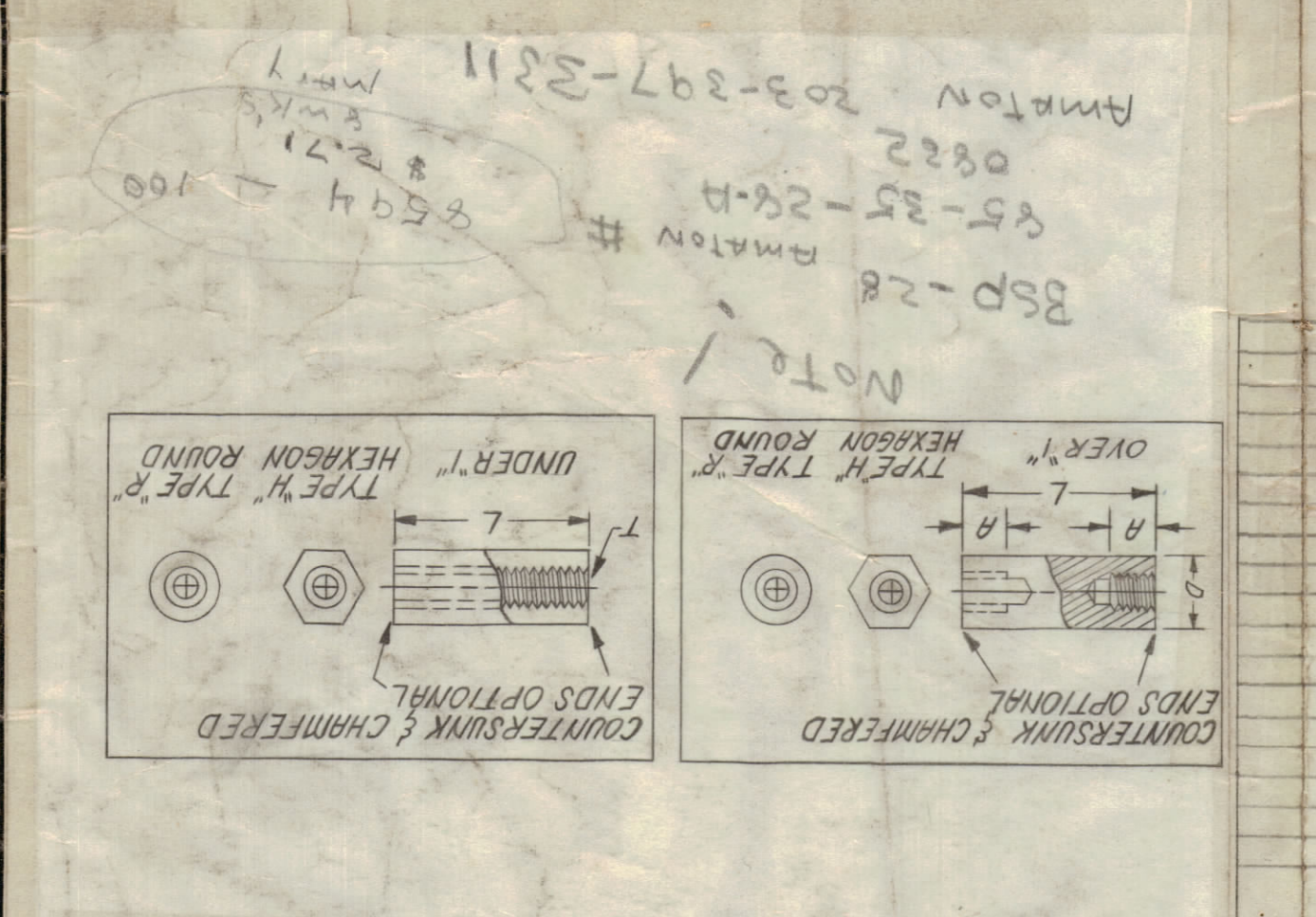
| TMC PART | CODE | THREAD | MAT | FINISH | LENGTH | SHAPE | DIAMETER | IN 1/16 | OR | DISTANCE |
|----------|------------------------|--------|-----|--------|--------|-------|----------|---------|----|----------|
| TE | 1032 | B | N | H | 0.937 | H | 10 | | | |
| A | ALUMINUM | | | | | | | | | |
| B | BRASS | | | | | | | | | |
| S | STEEL | | | | | | | | | |
| S | STAINLESS STEEL | | | | | | | | | |
| P | PHENOLIC LINEN BASE LE | | | | | | | | | |
| M | MELANINE G5 | | | | | | | | | |
| G | SILICONE GLASS (G-7) | | | | | | | | | |
| R | EPOXY G10 | | | | | | | | | |

| TMC SPEC. | FINISH | CODE | TMC PART | CODE | THREAD | SIZE | THREAD | CODE |
|-----------|-------------------------------|------|----------|------|----------|------|--------|------|
| S-105 | BLACK NICKEL | B | 1032 | 1032 | 3/8 - 16 | 3124 | 3124 | 0256 |
| S-135 | BRIGHT NICKEL | N | 1032 | 1032 | 3/8 - 16 | 3716 | 3716 | 0348 |
| S-104 | PASSIVATE (ONLY STAIN. STEEL) | S | 1032 | 1032 | 3/8 - 16 | 3732 | 3732 | 0356 |
| S-101 | CAUSTIC DIP AND LACQUER | L | 1032 | 1032 | 3/8 - 16 | 4320 | 4320 | 0440 |
| S-404 | IRIDITE | E | 1032 | 1032 | 3/8 - 16 | 3732 | 3732 | 0632 |
| S-245 | SILVER PLATE | P | 1032 | 1032 | 3/8 - 16 | 3732 | 3732 | 0832 |
| | NO FINISH | R | 1032 | 1032 | 3/8 - 16 | 3732 | 3732 | 0932 |

| REVISIONS | DATE | DESCRIPTION | ZONE | SYN |
|-----------|---------|--|------|-----|
| BX | 10-1-64 | ON SIZE CHART, IT WAS .541 ± .005 3/16, THIS IS ADDED. | | |
| CA | 1-13-65 | CHART: CODE 90/ADD. | | |
| CB | 2-11-65 | "SUNK ENDS OPTIONAL" CALIBUTS. | | |
| CC | 3-16-65 | CODE 92 ± .93 ADD. | | |
| CD | 3-16-65 | CODE 94, 95, & 96 ADD. | | |
| CE | 3-29-65 | CODE 97 ADD. | | |
| CF | 5-3-65 | CODE "98" ADDED | | |
| CG | 5-16-65 | CODE 99 & 100 ADDED | | |
| CH | 5-16-65 | CODE 103 ADDED | | |
| CI | 5-16-65 | CODE 94, 95, & 96 ADDED | | |
| CJ | 5-16-65 | CODE 97 ADDED | | |
| CK | 5-16-65 | CODE 98 ADDED | | |
| CL | 5-16-65 | CODE 99 & 100 ADDED | | |
| CM | 5-16-65 | CODE 103 ADDED | | |

| REVISIONS | DATE | DESCRIPTION | ZONE | SYN |
|-----------|----------|---|------|-----|
| BG | 11-20-62 | REDRAWN & REVISED, ITEM 63 ADDED | | |
| BH | 12-10-62 | CHAMFER ADDED TO TYPES "H" & "R". | | |
| BJ | 1-10-63 | ON SIZE CHART, CODE # 64 ADDED | | |
| BK | 5-13-63 | ON SIZE CHART CODE # 65, 66 & 67 ADDED | | |
| BL | 6-16-63 | ON SIZE CHART ADDED CODE # 68 & 69 | | |
| BM | 6-16-63 | ON SIZE CHART ADDED CODE 70 | | |
| BN | 7-29-63 | ON SIZE CHART ADDED CODE 71 | | |
| BO | 7-29-63 | EXTENSIVE CHANGES SEE EMM # 11013 | | |
| BP | 10-23-63 | ON SIZE CHART CODE 72 ADDED | | |
| BQ | 11-26-63 | ITEMS 73 & 74 ADDED | | |
| BR | 1-26-64 | AM | | |
| BS | 3-31-64 | ADDED ITEMS 77, 78 & 79 TO SIZE CHART | | |
| BT | 7-6-64 | CODE # 80, 81, 82, 83 ADDED TO SIZE CHART | | |
| BU | 7-6-64 | CODE # 84, 85 ADDED TO SIZE CHART | | |
| BV | 7-29-64 | CODE # 86 ADDED TO SIZE CHART | | |
| BW | 8-10-64 | CODE # 87 ADDED TO SIZE CHART | | |

| RECD. | ITEM | PART NUMBER | DESCRIPTION | SYMBOL |
|-------|------|-------------|------------------|--------|
| TE | | 1032 | SPACER, THREADED | |
| B | | 2 | SHAPE | |
| N | | N | FINISH | |
| B | | B | MAT | |
| R | | R | SHAPE | |



| REVISIONS | DATE | DESCRIPTION | ZONE | SYN |
|-----------|----------|---|------|-----|
| B5 | 11-20-62 | REDRAWN & REVISED, ITEM 63 ADDED | | |
| B6 | 12-10-62 | CHAMFER ADDED TO TYPES "H" & "R". | | |
| B7 | 1-10-63 | ON SIZE CHART, CODE # 64 ADDED | | |
| B8 | 5-13-63 | ON SIZE CHART CODE # 65, 66 & 67 ADDED | | |
| B9 | 6-16-63 | ON SIZE CHART ADDED CODE # 68 & 69 | | |
| B10 | 7-29-63 | ON SIZE CHART ADDED CODE 70 | | |
| B11 | 7-29-63 | EXTENSIVE CHANGES SEE EMM # 11013 | | |
| B12 | 10-23-63 | ON SIZE CHART CODE 72 ADDED | | |
| B13 | 11-26-63 | ITEMS 73 & 74 ADDED | | |
| B14 | 1-26-64 | AM | | |
| B15 | 3-31-64 | ADDED ITEMS 77, 78 & 79 TO SIZE CHART | | |
| B16 | 7-6-64 | CODE # 80, 81, 82, 83 ADDED TO SIZE CHART | | |
| B17 | 7-6-64 | CODE # 84, 85 ADDED TO SIZE CHART | | |
| B18 | 7-29-64 | CODE # 86 ADDED TO SIZE CHART | | |
| B19 | 8-10-64 | CODE # 87 ADDED TO SIZE CHART | | |