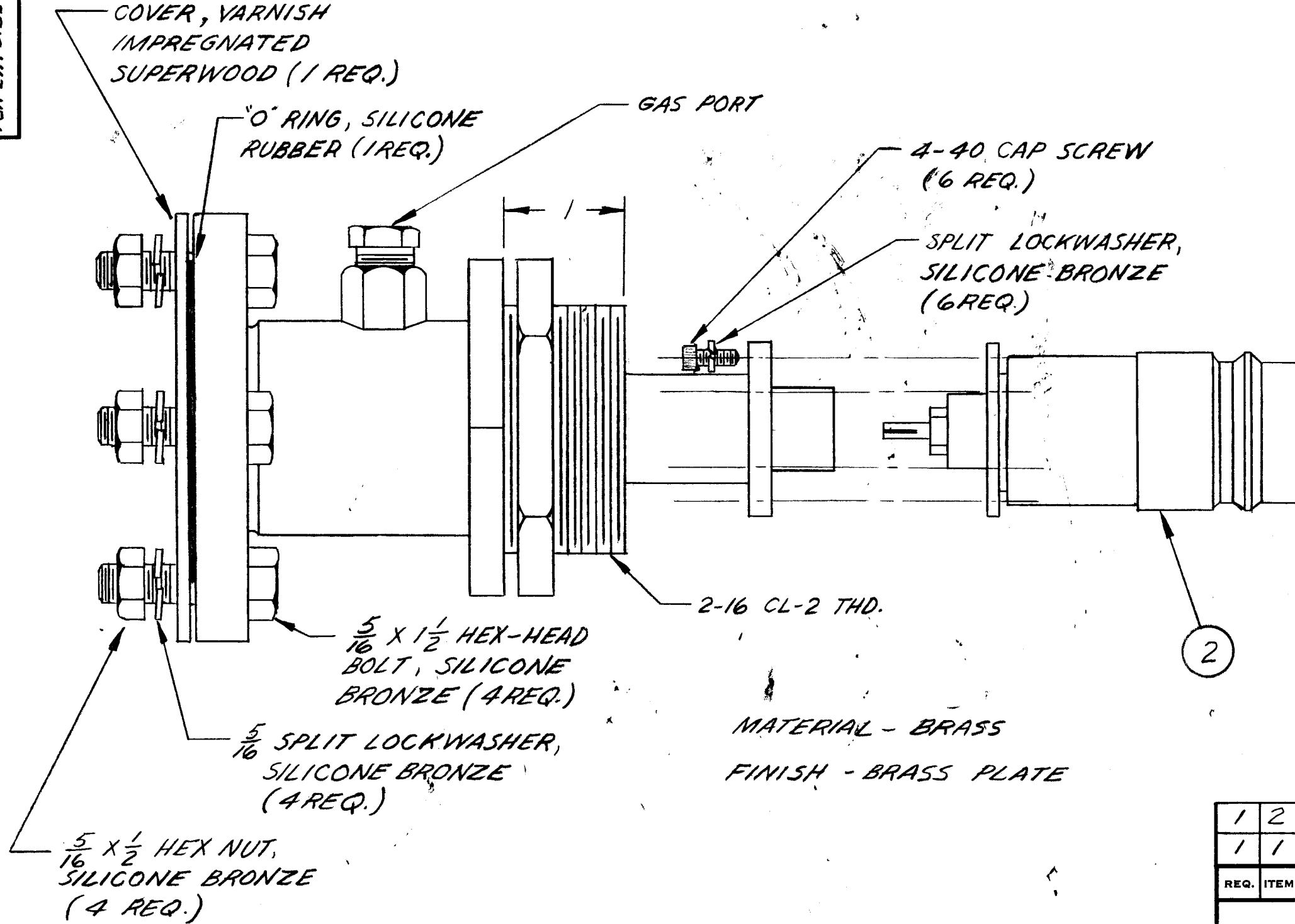


TCA-EIA 51625/QDL

THE CONTENTS OF THIS DRAWING ARE THE EXCLUSIVE PROPERTY OF THE TECHNICAL MATERIEL CORP. ITS UNAUTHORIZED USE OR REPRODUCTION IN WHOLE OR IN PART IS STRICTLY FORBIDDEN.

MODEL	SUPPLIED WITH STRAIGHT PLUG	SUPPLIED WITH ANGLE PLUG	CABLE
TCA-EIA 51625/QDL-1	PL-136		RG-17,18,35,164,218,219/U
TCA-EIA 51625/QDL-2		PL-141	RG-17,18,35,164,218,219/U



NOTE:
 1. 2 1/8" DIA. HOLE REQUIRED FOR MOUNTING.
 2. OVERALL DIMENSION IS APPROX. 7 5/8"

1	2	JJ-134	CONNECTOR ADAPTOR QDL	
1	1	PO-249	FEED THRU	
REQ.	ITEM	PART NO.	DESCRIPTION	SYMBOL
X			THE TECHNICAL MATERIEL CORP., MAMARONECK, NEW YORK	
X			CONNECTOR, RECEPTACLE, ELECTRICAL	
X			FEEDTHRU 1 5/8 EIA 50 OHM TO QDL	
X		X	WH	RUIZZO
TYPE & TEMPER		HEAT TREAT. SPEC.	DRAWN	CHECKED
X		X	FINAL APPROVAL	
FINISH & SPEC. NO.		ELEC. DES. APP.	MECH. DES. APP.	TCA-EIA 51625/QDL

SYM	DESCRIPTION	DATE	CH. NO.	DRAFTS	CHECKER	ENG. APP.
A	ITEM(1) WAS EIA-51625	10-15-62	7445	PTZ	AW	[Signature]

UNLESS OTHERWISE SPECIFIED:
 DIMENSIONS ARE IN INCHES
 TOLERANCES ON FRACTIONS ± 1/64 DECIMALS ± .005 ANGLES ± 1/20

SCALE:
 MAXIMUM ALLOWABLE TOLERANCES HAVE BEEN DETERMINED AND ANY DEVIATIONS WILL BE CAUSE FOR REJECTION. REMOVE ALL BURRS AND SHARP EDGES

1 SEE CHART 12-15-61

REQ. PER UNIT	MODEL	SECTION	ASS'Y. NO.	DATE
1				12-15-61

USED ON