

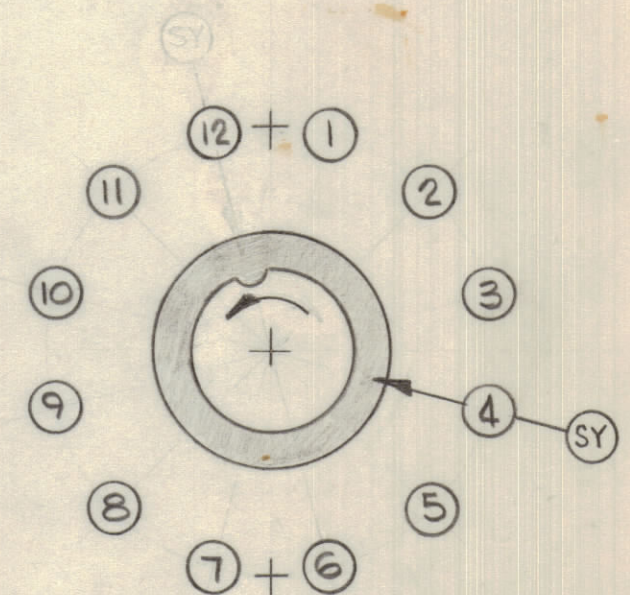
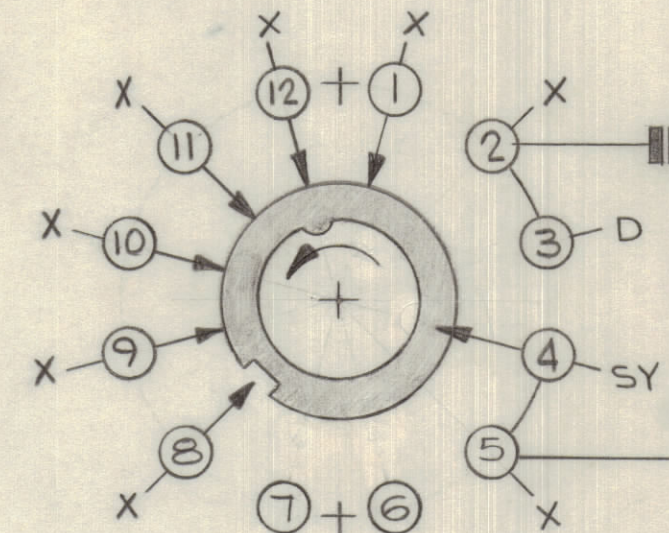
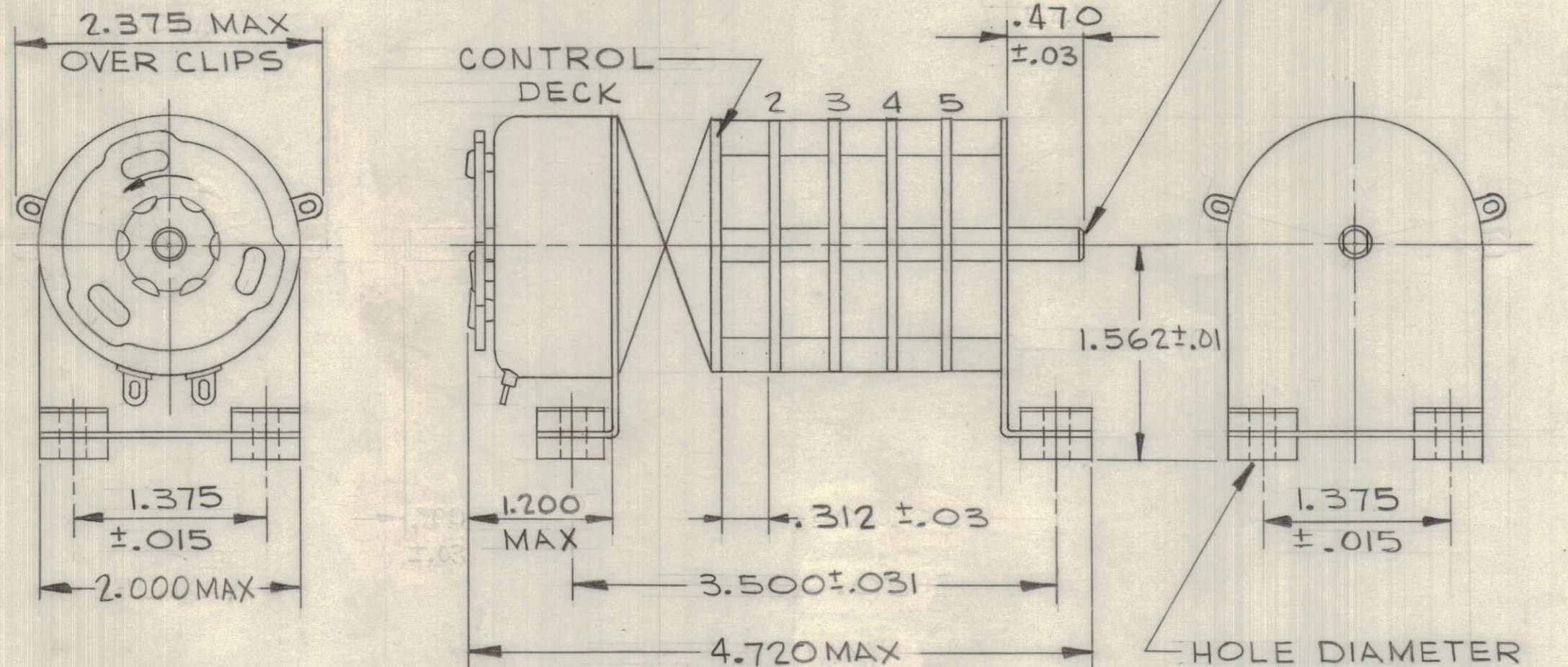
IF IT IS FOUND DESIRABLE TO CHANGE ANY TOLERANCE OR OTHER DETAIL SPECIFIED ON THIS DRAWING NOTIFY THE PURCHASER PROMPTLY.		DIMENSIONS IN INCHES UNLESS OTHERWISE SPECIFIED					
MAXIMUM ALLOWABLE TOLERANCES HAVE BEEN DETERMINED AND DEVIATIONS WILL BE CAUSE FOR REJECTION. REMOVE ALL BURRS AND SHARP EDGES.							
ISSUE	ITEM	CHANGED FROM	DATE	CN. NO.	DRAFTS	CHECKER	ENG. APP.
X		ENG RELEASE	27 APR 70		DSN		
X1		DELETE SHAFT FROM SOLENOID END, DIM. 2.375 WAS 2.500 DIM. 3/12 WAS .400 CHANGE DIRECTION OF TURN FOR SOLENOID CONTACTS RE-ORIENTATED	5 MAY 1970		DSN		
X2		COIL RES. AWG WAS 26	11 MAY 70		DSN		

REQ.	ITEM	PART NO.	DESCRIPTION	SYMBOL
------	------	----------	-------------	--------

PERMANENTLY MARK TMC PART NO. "SZ10010" ON TOP SURFACE OF THE SOLENOID

.250 DIA SHAFT TYP BOTH ENDS

NOTE BOTH SIDES OF WAFER VIEWED FROM (SOLENOID) END



SZ10010 X2

SPECIFICATIONS

MECHANICAL-

NO. OF SECTIONS: 4, 1POLE 12 POSITION DECKS PLUS 1 CONTROL CIRCUIT DECK

NO. OF POSITIONS: 12
ANGLE OF THROW: 30°

CONTACT MATERIAL: SOLID SILVER ALLOY
FINISH: TO WITHSTAND 50 HOURS SALT SPRAY

OPERATING TEMP: -55°C TO +80°C

WAFER MATERIAL - PHENOLIC

SWITCH WILL BE REQUIRED TO TURN AN ADDITIONAL LOAD WITH A TORQUE OF 1 POUND INCH

CIRCUIT DECK RATINGS

CURRENT RATING: CARRY 10 TO 15 AMPS RES. MAX

BREAK: 5 AMPS RES MAX @ 24VDC

BREAK: 1 AMP RES MAX @ 115VDC

DIELECTRIC STRENGTH: 1000V CLIP TO CLIP
500V INSULATED BACK TO BLACK CLIP

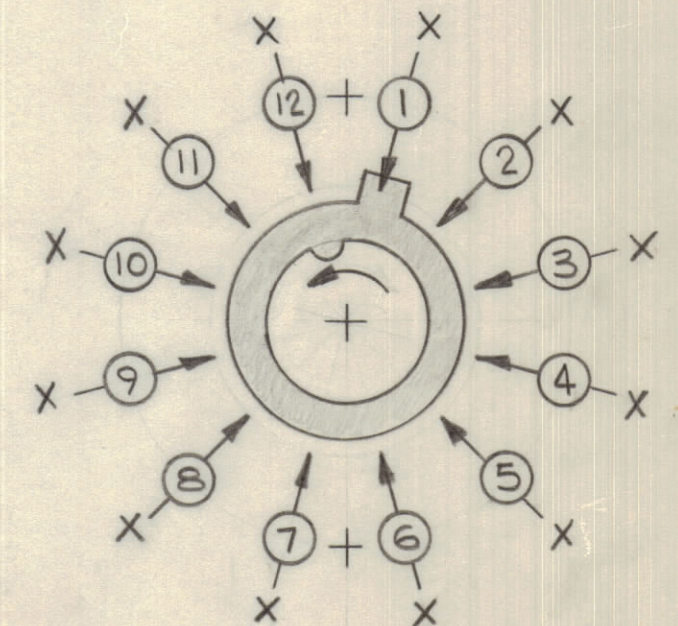
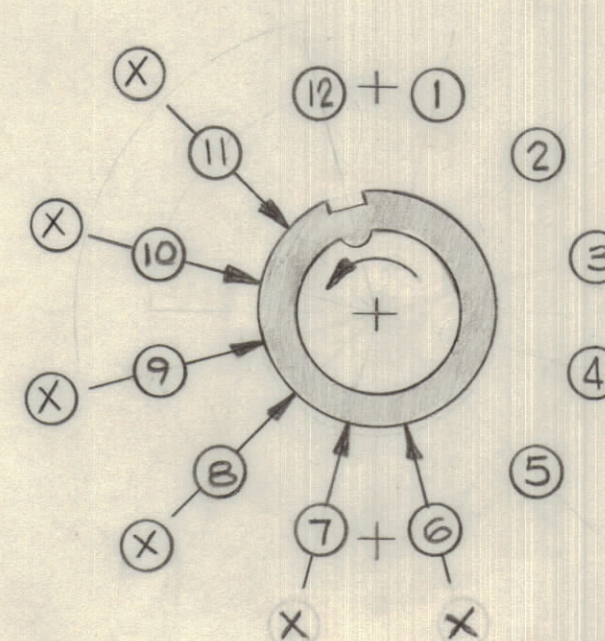
COIL SPECIFICATIONS

SOLENOID SIZE - 5B

VOLTAGE: 28VDC NOMINAL

COIL RESISTANCE: 4.88 OHMS (25AWG)

COIL TO CASE DIELECTRIC TEST: 1200 VRMS



CIRCUIT DECKS 2-5 ARE TO BE NON SHORTING

CLIP DESIGNATION

- O - INSULATED
- X - NON INSULATED
- S - STRAIGHT
- Y - LONG
- D - DUMMY

TOLERANCES		SOURCE: S401-281, 13	
ALL OTHERS	DEC. DIM. ± .01	FRAC. DIM. ± .005	ANGULAR DIM. ± 0° 30'
	.XX = .01	.XXX = .005	
DRILL, PUNCH, COMMERCIAL STOCK SIZES AND MANUFACTURERS TOLERANCES ARE NOT INCLUDED.			

MTR	087	23 APR 70
MODEL	PROJECT NO.	DATE

STOCK SIZE		TMC (Canada) LIMITED	
		OTTAWA	ONTARIO
SWITCH, ROTARY SOLENOID			
MATERIAL	WEIGHT PER PC.	DSN	
TYPE & TEMPER		DRAWN	ELEC. DES. APP.
			MECH. DES. APP.
HEAT TREAT. SPEC.		CHECKED	FINAL APPROVAL
FINISH & SPEC. NO.		SZ10010 X2	