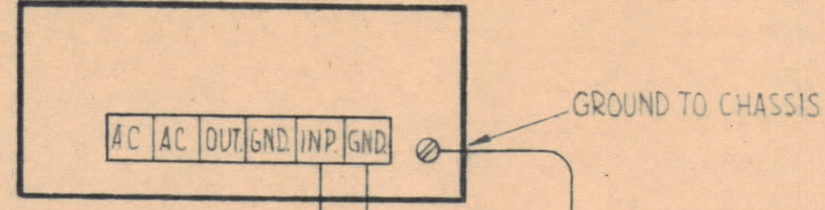
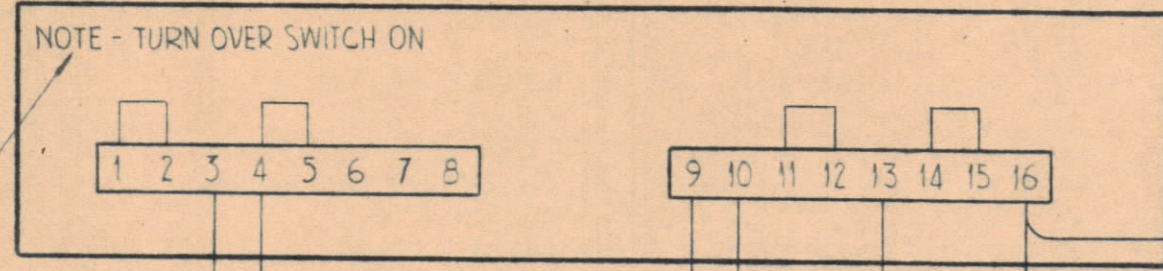


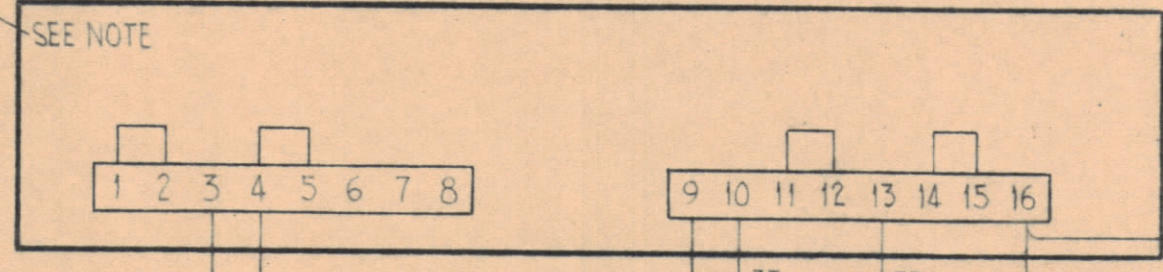
LINE AMP



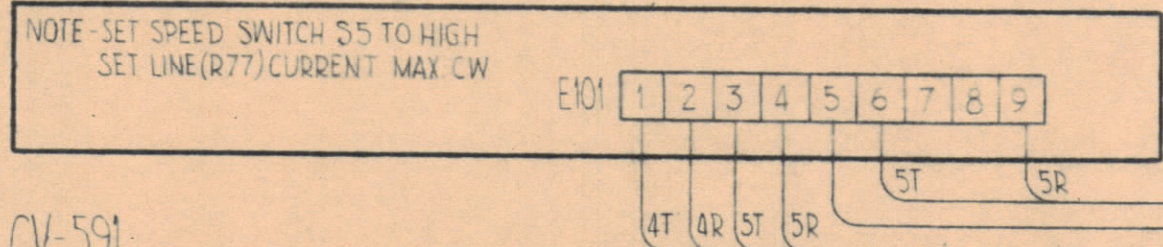
R-390



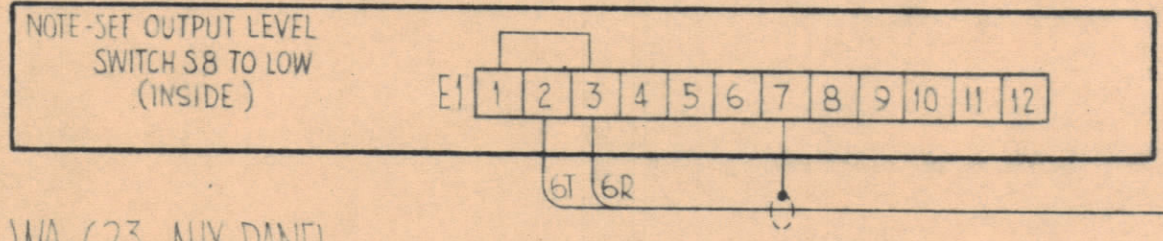
R-390



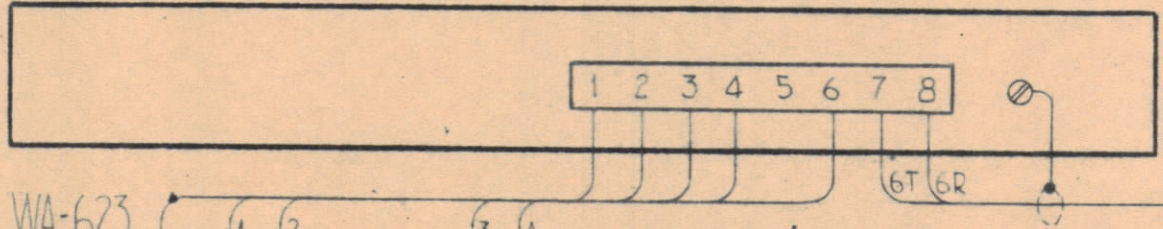
CFA



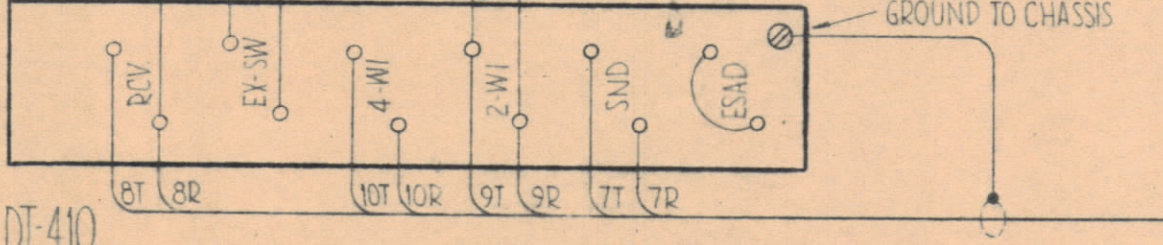
CV-591



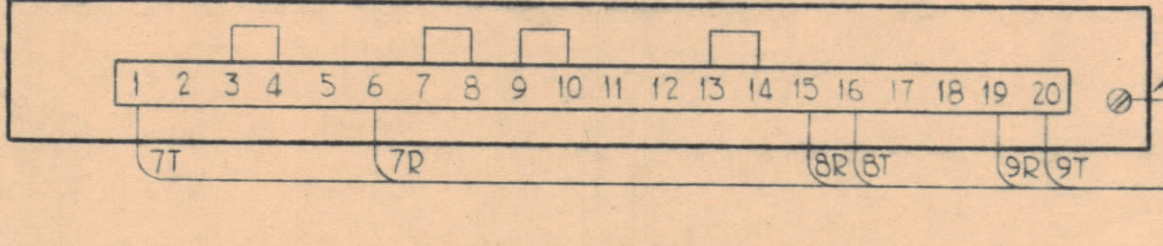
WA-623-AUX PANEL



WA-623



DT-410



J1-AUDIO HARNESS

WIRE	CONNECTOR PIN
1T	1
1R	2
2T	3
2R	4
3T	5
3R	6
4T	7
4R	8
5T	9
5R	10
6T	11
6R	12
7T	13
7R	14
8T	15
8R	16
9T	17
9R	18
10T	19
10R	20

SHIELDS-31

J2-DC HARNESS

WIRE	CONNECTOR PIN
1T	1
1R	2
2T	3
2R	4
3T	5
3R	6
4T	7
4R	8
5T	9
5R	10
6T	11
6R	12
7T	13
7R	14
8T	15
8R	16
9T	17
9R	18

SHIELDS-31

NOTES:

- J1, J2 - 31 PIN CONNECTOR
AMPHENOL-MS-24264R18T31P
- INSTALL STRAPS & SET CONTROLS ON EQUIPMENT PRIOR TO INSTALLATION

Orig. in Jirgona

AUG 13 1962

SYM	ZONE	DESCRIPTION	DATE	CH. NO.	DRAFTS	CHECKER	ENG. APP.
UNLESS OTHERWISE SPECIFIED:							
DIMENSIONS ARE IN INCHES							
TOLERANCES ON							
FRACTIONS ± 1/64 DECIMALS ± .005 ANGLES ± 1/2°							
SCALE —							
MAXIMUM ALLOWABLE TOLERANCES HAVE BEEN DETERMINED AND ANY DEVIATIONS WILL BE CAUSE FOR REJECTION. REMOVE ALL BURRS & SHARP EDGES							

REQ. PER UNIT	MODEL	SECTION	ASSY. NO.	DATE
	SYM-2003-1			3-14-62
USED ON				

REQ. ITEM	PART NO.	DESCRIPTION	SYMBOL
THE TECHNICAL MATERIEL CORP. MAMARONECK, NEW YORK			
AUDIO & DC HARNESS CABINETS 1, 2, 1.3 & 1.5			
MATERIAL			
S. Granfilippo			
TYPE & TEMPER		CHECKED	FINAL APPROVAL
HEAT TREAT. SPEC.			
FINISH & SPEC. NO.			
ELEC. DES. APP.		MECH. DES. APP.	SHEET OF