

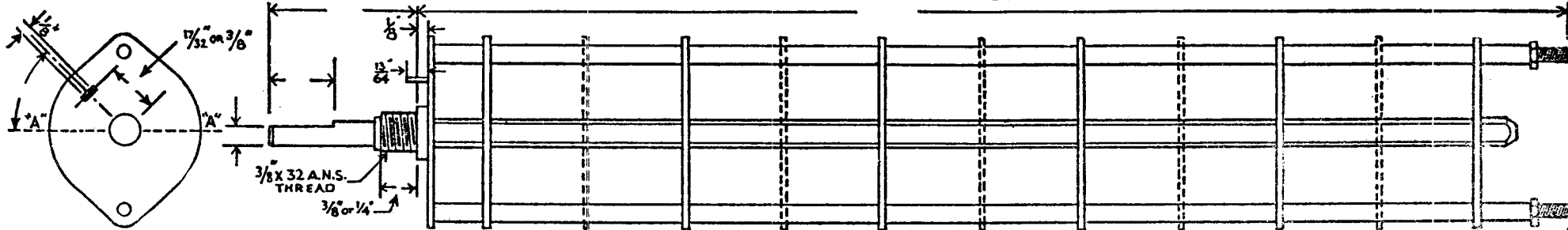
OAK TYPE (H, HC, DH, DHC, QH, QDH, QHC, QDHC.)

SWITCH

SX-103

CIRCLE TYPE DESIRED

CUSTOMER'S PART NO.



DRAW IN FLAT ON ABOVE SHAFT IN EXTREME COUNTER CLOCKWISE POSITION AND SHOW ANGLE IN REFERENCE TO LINE "A-A"

FRONT AND REAR OF SECTIONS VIEWED FROM FRONT OR KNOB END OF SWITCH IN EXTREME COUNTER-CLOCKWISE POSITION

TOTAL NO. OF SECTIONS _____

NO. OF POSITIONS _____

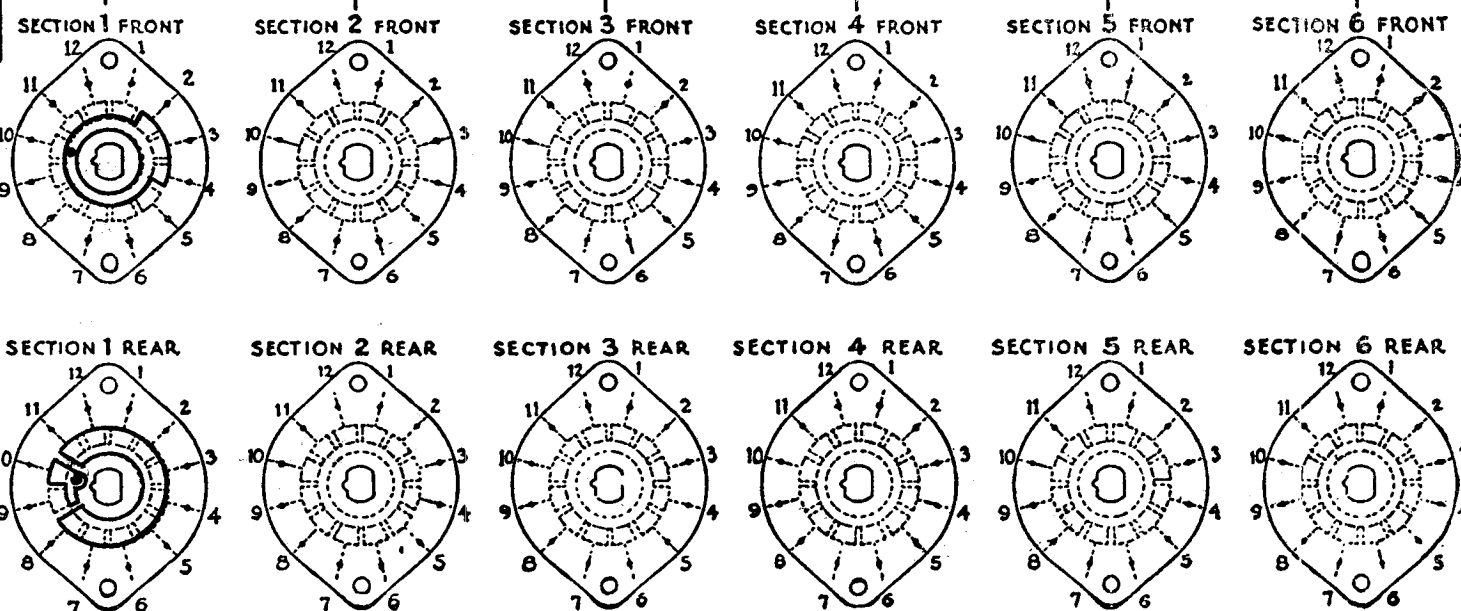
(NO CLIP HERE) 12 SHOW SHORT CLIPS THUS

SHOW INSULATED S10 CLIPS THUS

SHOW THRU CONNECTION OF ROTOR ON BACK SIDE THUS

SHOW CLIPS WITH REVERSED LUGS THUS

OUTLINE ROTOR BLADES AS ABOVE IN EXTREME COUNTER-CLOCKWISE (LEFT) POSITION



CUSTOMER

OAK MFG. CO.
1260 CLYBORN AVE., CHICAGO 10, ILL.

FILL IN ALL DIMENSIONS INDICATED ABOVE AND CHECK ALL SPECIFICATIONS BELOW. REFER TO OAK ENGINEERING DATA SHEETS FOR STANDARD DIMENSIONS OF TYPE DESIRED AND FOR SPECIMEN OF THIS LAYOUT SHEET. TO OBTAIN MOST ECONOMICAL UNITS AND SHORTEST DELIVERY DATES PLEASE ADHERE TO THE STANDARDS AS CLOSELY AS POSSIBLE.

SPECIFICATIONS

SHORTING TYPE CONTACTS NON-SHORTING IF NOT SPECIFIED SHORTING TYPE WILL BE SUPPLIED.
 INSULATION: BAKELITE ; CERAMIC SPECIFY IMPREGNATION IF REQUIRED _____
 FINISH REQUIREMENTS: COMMERCIAL ; ARMY ; NAVY ; SALT TEST (IF ANY GIVE DETAILS) _____
 CONTACTS AND ROTORS: SILVER PLATED BRASS ; SOLID SILVER ALLOY ; IF NOT SPECIFIED SILVER PLATED BRASS WILL BE SUPPLIED.
 MOUNTING HARDWARE: SUPPLY _____ 3/8" - 32 NUTS _____ ACROSS FLATS; MATERIAL _____ PLATING _____
 _____ 3/8" INTERNAL TOOTH LOCKWASHER; MATERIAL _____ PLATING _____
 STAMP PART NUMBER _____ ON FRONT PLATE, YES NO

CUSTOMER NOTES

ROTOR BLADE TYPE H
 GPR BANDSWITCH
 S-1C FRONT + REAR
 S-1E FRONT + REAR
 REF. BM 224
 P.L.K.
 G.T.O.
 8X103
 DATE 5/2/55