

DESG.	DIMENSION	TOL.	REMARK
A	7/8	±.015	SHAFT LG. FROM MTG. SURFACE
B	3/8	±.005	BUSH. LG.
C		±.015	FLAT LG. (IF REQ.)
D		±2°	FLAT ANGLE (IF REQ.)
E		±.002	FLAT (IF REQUIRED)
F	17/32	±.010	KEY LOCATION (IF REQ.)
G			KEY LOCATION (IF REQ.)
M	3/16	±.010	
N	1/16	±.093	REAR SCR. EXT.
Q	3/16	±.031	REAR SHAFT EXT.
R	5/8		1st SEC. SPACING

TMC PART NUMBER: SW-800A STAMP ON FRONT PLATE
 FRONT PLATE SHAPE: ROUND OR OBLONG

MECHANICAL SPECIFICATIONS:
 NUMBER OF SECTIONS - 2
 NUMBER OF POSITIONS - 9
 ANGLE OF THROW - 30°

CONTACTS:
 SHORTING TYPE, SECTIONS _____
 NON SHORTING TYPE, SECTIONS
 SILVER PLATED BRASS, SECTIONS
 SILVER ALLOY, SECTIONS _____

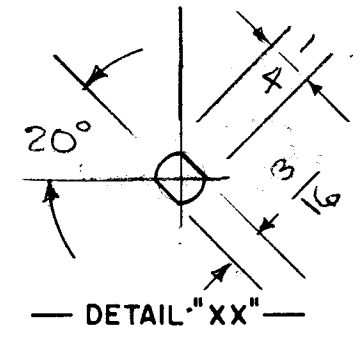
WAFERS:
 BAKELITE, SECTIONS _____
 CERAMIC, SECTIONS _____
 MYCALEX, SECTIONS _____
 IMPREGNATION (IF REQ.) _____

FINISH REQUIREMENTS:
 ARMY _____ NAVY _____ COMMERCIAL
 SALT TEST (IF REQ.) _____

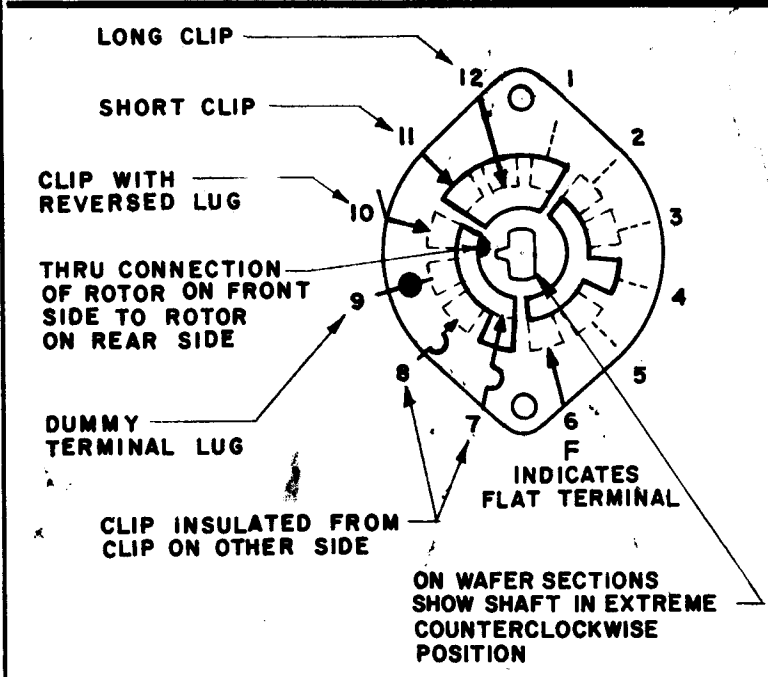
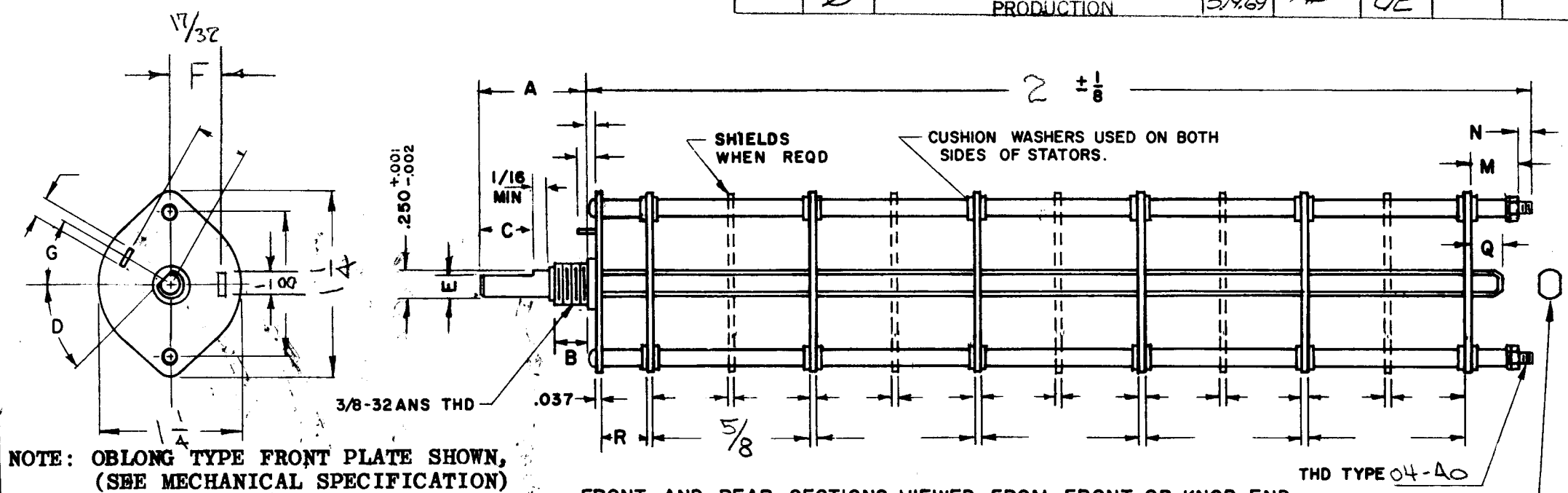
HARDWARE, TO BE SUPPLIED BY MANUFACTURER:
 1 QUAN. 3/8 -32 NUTS 1/2 ACROSS FLATS
 MATERIAL BRASS PLATING NICKEL
 1 QUAN. INTERNAL TOOTH LOCKWASHER
 MATERIAL BRASS PLATING NICKEL

ELECTRICAL SPECIFICATIONS:
 MAXIMUM RATED VOLTAGE _____
 MAXIMUM RATED CURRENT _____

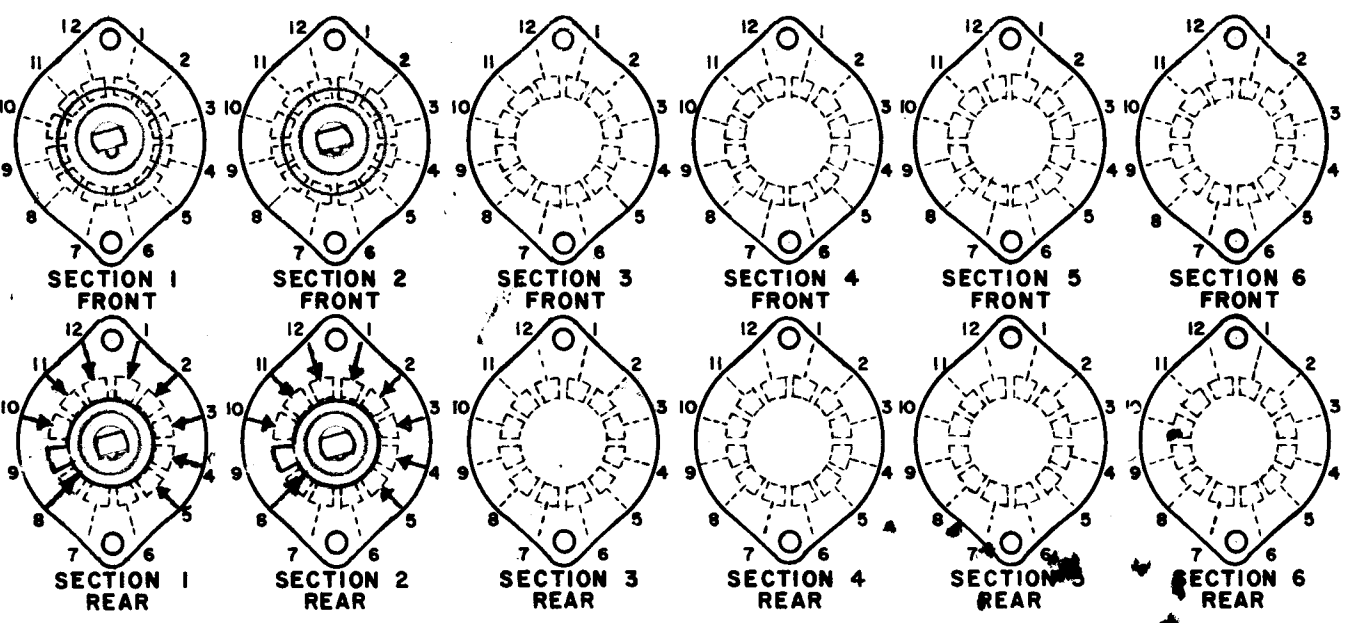
NOTE:
 FOR S401-13 ("F" TYPE) SWITCHES, THE SHAFT POSITION MUST BE SPECIFIED ON DETAIL "XX" BELOW.



NOTES



FRONT AND REAR SECTIONS VIEWED FROM FRONT OR KNOB END OF SWITCH IN EXTREME COUNTERCLOCKWISE POSITION. SEE NOTE (DET. "XX")



SYMBOLS USED IN MARKING PRINT

SWITCH, ROTARY - 12 POINT TYPE

QTY / UNIT		1	STUDIO 24	ASS'Y NO.		UNLESS OTHERWISE SPECIFIED DIMENSIONS ARE IN INCHES AND INCLUDE CHEMICALLY APPLIED OR PLATED FINISHES	FINAL APPROVAL	DATE	THE TECHNICAL MATERIEL CORP. MAMARONECK, NEW YORK			
MODEL USED ON		APPLICATION		CODE		DECIMALS .X ± .05 .XX ± .01 .XXX ± .005	MECH. DES.	DATE	SWITCH, ROTARY STUDIO SPEAKER SELECTOR			
						FRACTIONS 1/64 ANGLES 0° - 30'	ELECT. DES.	DATE	SIZE	CODE IDENT. NO.	DWG NO.	ISSUE
						MATERIAL	CHECKED	DATE	B	82679	SW8004	Ø
						FINISH	DRAWN	DATE	SCALE		SHEET OF	
							C.D. DEAN	2-21-67				

NOTICE TO PERSONS RECEIVING THIS DRAWING
 THE TECHNICAL MATERIEL CORPORATION claims proprietary right in the material disclosed hereon. This drawing is issued in confidence for engineering information only and may not be reproduced or used to manufacture anything shown hereon without permission from THE TECHNICAL MATERIEL CORPORATION to the user. This drawing is loaned for mutual assistance and is subject to recall at any time.